

SOIL TEST RESULTS

SAMPLE NO.	OFFSET	STATION	DEPTH INTERVAL	AASHTO CLASS.	L.L.	P.L.	% BY WEIGHT				% PASSING SIEVES			% MOISTURE	% ORGANIC
							C. SAND	F. SAND	SILT	CLAY	10	40	200		
SS 74	0.0	268+20.0	0.80-1.25	A-7-6(7)	47	29	4.5	54.0	6.8	34.7	98.7	97.7	43.3	22	NS
SS 75	0.0	268+20.0	1.50-1.95	A-7-6(5)	42	23	1.9	59.4	7.9	30.8	100.0	99.6	41.3	22	NS
SS 76	0.0	268+20.0	4.10-4.55	A-3(0)	25	NP	15.5	84.2	0.1	0.2	100.0	93.8	1.3	32	NS
SS 39	0.0	271+00.0	1.50-1.95	A-7-6(13)	54	33	2.3	48.8	10.5	38.4	100.0	99.5	52.0	23	NS
SS 40	0.0	271+00.0	5.60-6.05	A-3(0)	23	NP	26.9	65.1	0.0	8.0	99.9	88.2	9.3	23	NS
SS 41	0.0	271+00.0	13.20-13.65	A-2-6(0)	33	14	70.5	15.1	0.4	14.0	91.0	37.4	17.3	13	NS
SS 42	0.0	271+00.0	16.20-16.65	A-2-6(1)	31	13	53.9	15.1	10.4	20.6	99.6	82.2	32.3	17	NS
SS 43	0.0	271+00.0	19.30-19.75	A-7-6(20)	51	22	5.5	15.8	30.8	47.9	99.2	96.4	82.0	17	NS

DESCRIPTION:  
US 74 FROM SR1003 TO 1-95

PROJECT NO.: G. 469002T SHEET NO. 54  
TIP NO.: R-0513C  
COUNTY: ROBESON

ROADWAY DESIGN ENGINEER: [Signature]  
HYDRAULICS ENGINEER: [Signature]

PREPARED BY: **CALIN**  
ENGINEERS and SCIENTISTS  
WILMINGTON, NORTH CAROLINA

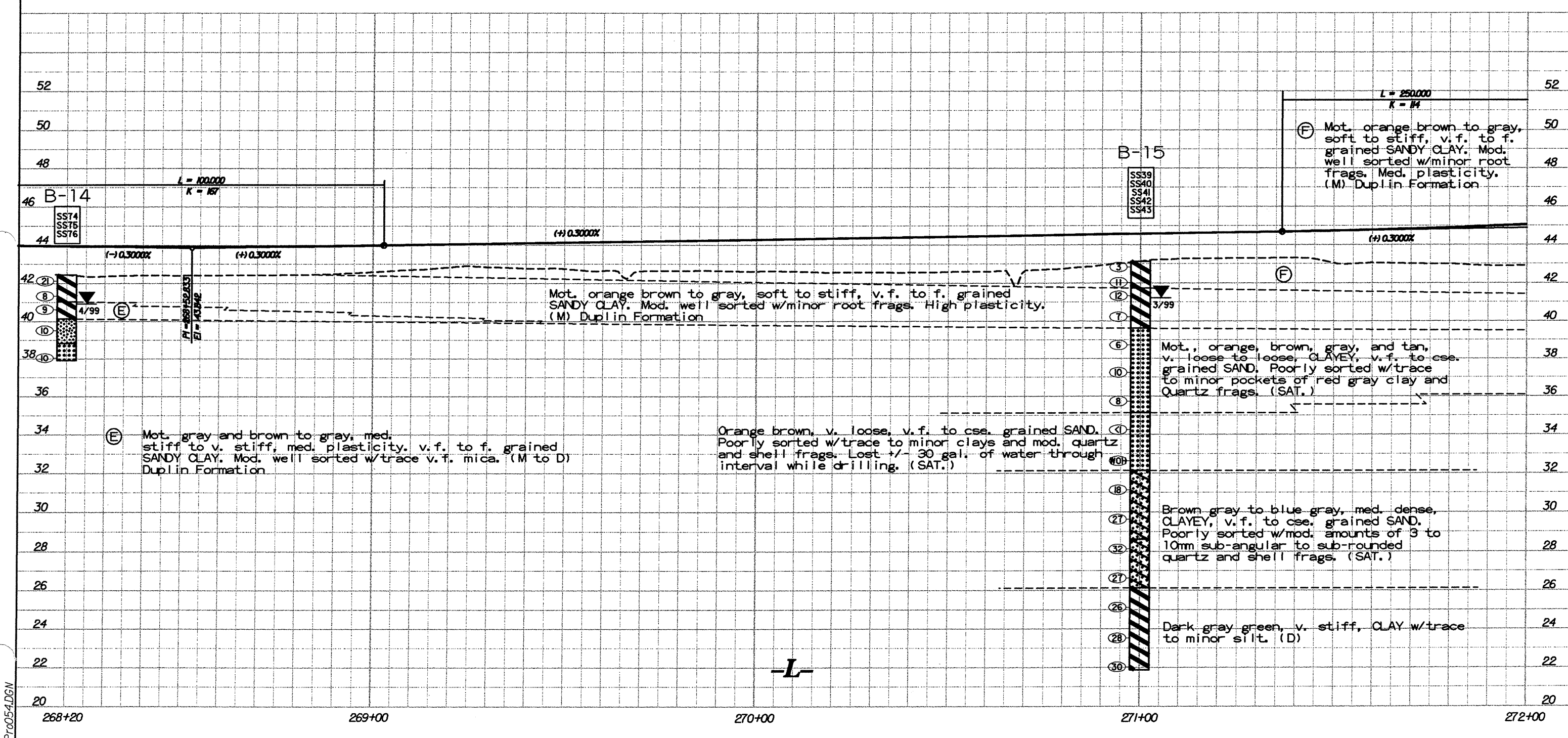
DATE: 06 / 00

CONST. REV. \_\_\_\_\_  
RW REV. \_\_\_\_\_

5m 10m

PRELIMINARY PLANS  
DO NOT USE FOR CONSTRUCTION  
INCOMPLETE PLANS  
DO NOT USE FOR R/W ACQUISITION

TGS  
ADAPTED FROM:  
TGS ENGINEERS  
975 WALNUT STREET  
CARY, NC 27511  
PH (919) 319-8850



PRO054.DGN