

SOIL TEST RESULTS

SAMPLE NO.	OFFSET	STATION	DEPTH INTERVAL	AASHTO CLASS.	L.L.	P.L.	% BY WEIGHT				% PASSING SIEVES			% MOISTURE	% ORGANIC
							C. SAND	F. SAND	SILT	CLAY	10	40	200		
SS 61	0.0	280+80.0	5.60-6.05	A-2-4(0)	21	NP	14.9	69.8	3.3	12.0	99.8	97.2	16.8	32	NS
SS 86	0.0	282+80.0	1.50-1.95	A-7-5(19)	63	30	17.3	26.3	10.9	45.5	83.4	83.1	63.5	28	NS
SS 87	0.0	282+80.0	2.60-3.05	A-3(0)	19	NP	62.6	29.9	3.5	4.0	100.0	78.8	8.3	24	NS
SS 88	0.0	282+80.0	4.10-4.55	A-2-4(0)	21	NP	64.8	25.6	4.6	5.0	99.0	64.8	10.8	42	NS
SS 89	0.0	282+80.0	8.60-9.05	A-7-5(3)	43	12	49.3	10.5	30.2	10.0	93.9	62.5	44.1	15	NS

DESCRIPTION:
US 74 FROM SR1003 TO 1-95

PREPARED BY:
CAELIN

ENGINEERS and SCIENTISTS
WILMINGTON, NORTH CAROLINA

DATE: 0600



CONST. REV. _____

RW REV. _____

PROJECT NO.: 6.469002T SHEET NO. 57

TIP NO.: R-0513C

COUNTY: ROBESON

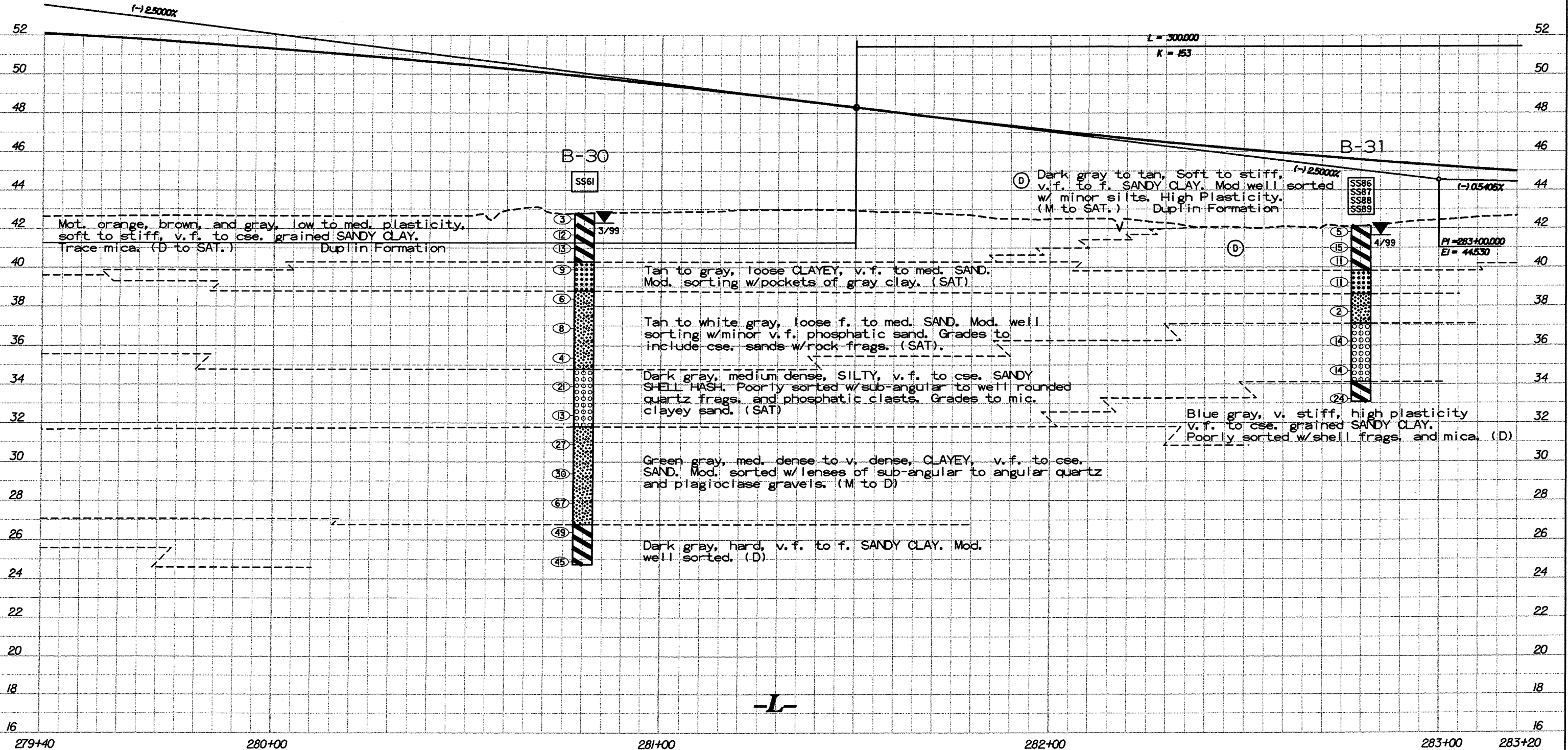
ROADWAY DESIGN ENGINEER

HYDRAULICS ENGINEER

PRELIMINARY PLANS
DO NOT USE FOR CONSTRUCTION

INCOMPLETE PLANS
DO NOT USE FOR R/W ACQUISITION

TGS
ADAPTED FROM:
TGS ENGINEERS
975 WALNUT STREET
CARY, NC 27511
PH (919) 319-8850



Pr0057.DGN