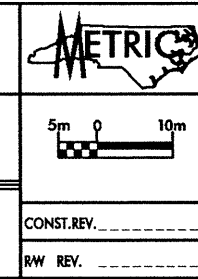


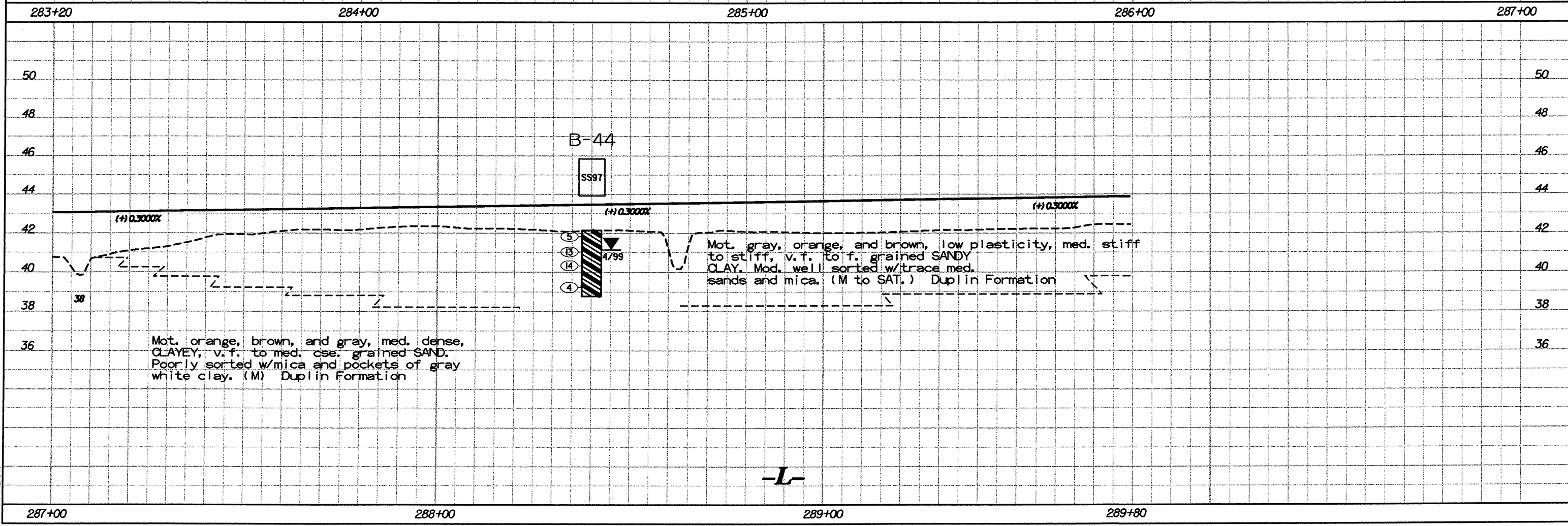
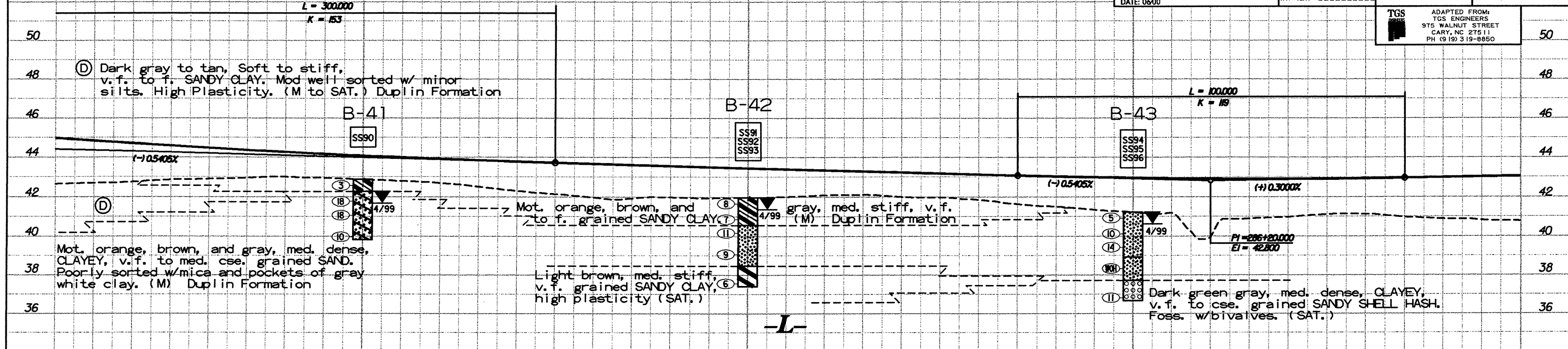
SOIL TEST RESULTS

SAMPLE NO.	OFFSET	STATION	DEPTH INTERVAL	AASHTO CLASS.	LL	PL	% BY WEIGHT				% PASSING SIEVES			% MOISTURE	% ORGANIC
							C. SAND	F. SAND	SILT	CLAY	10	40	200		
SS 90	0.0	284+00.0	1.50-1.95	A-2-6(0)	32	16	20.6	60.5	0.8	18.1	98.2	92.6	20.4	19	NS
SS 91	0.0	285+00.0	0.80-1.25	A-6(1)	35	12	12.2	55.0	7.9	24.9	95.4	93.9	36.4	25	NS
SS 92	0.0	285+00.0	1.50-1.95	A-2-4(0)	25	NP	30.4	53.7	1.4	14.5	99.7	94.3	17.0	23	NS
SS 93	0.0	285+00.0	4.10-4.55	A-7-5(64)	102	69	11.0	8.4	25.1	55.5	89.6	89.4	82.3	12	NS
SS 94	0.0	286+00.0	0.00-0.45	A-2-4(0)	18	NP	27.4	57.4	2.3	12.9	96.7	88.1	16.8	17	NS
SS 95	0.0	286+00.0	1.50-1.95	A-2-4(0)	27	NP	1.3	82.9	2.6	13.2	100.0	99.7	16.7	22	NS
SS 96	0.0	286+00.0	2.60-3.05	A-2-4(0)	27	6	49.8	34.6	4.1	11.5	93.6	74.7	17.7	33	NS
SS 97	0.0	288+40.0	2.90-3.35	A-6(3)	37	14	4.7	58.9	8.1	28.3	95.6	95.6	43.7	31	NS

DESCRIPTION:  
 US 74 FROM SR 1003 TO I-95  
 PREPARED BY:  
**CALIN**  
 ENGINEERS and SCIENTISTS  
 WILMINGTON, NORTH CAROLINA  
 DATE: 06/00



PROJECT NO.: 6.469002T SHEET NO. 58  
 TIP NO.: R-0513C  
 COUNTY: ROBESON  
 ROADWAY DESIGN ENGINEER  
 HYDRAULICS ENGINEER  
**PRELIMINARY PLANS**  
 DO NOT USE FOR CONSTRUCTION  
**INCOMPLETE PLANS**  
 DO NOT USE FOR R/F ACQUISITION  
 TGS  
 ADAPTED FROM:  
 TGS ENGINEERS  
 975 WALNUT STREET  
 CARY, NC 27511  
 PH (919) 319-8850



Proc058.DGN