

SOIL TEST RESULTS

SAMPLE NO.	OFFSET	STATION	DEPTH INTERVAL	AASHTO CLASS.	LL	PL. I.	% BY WEIGHT				% PASSING SIEVES			% MOISTURE	% ORGANIC
							C. SAND	F. SAND	SILT	CLAY	10	40	200		
SS 98	0.0	292+80.0	0.00-0.45	A-7-6(3)	36	19	20.2	35.3	10.8	33.7	97.9	91.1	46.3	14	NS
SS 99	0.0	292+80.0	0.80-1.25	A-7-6(3)	46	19	21.7	40.6	2.9	34.8	94.8	90.6	39.9	20	NS
SS 100	0.0	292+80.0	2.60-3.05	A-7-6(11)	42	17	14.4	31.6	7.8	46.2	86.3	86.1	58.4	33	NS
SS 101	0.0	292+80.0	4.10-4.55	A-3(0)	26	NP	0.9	89.3	1.3	8.5	100.0	99.9	10.5	26	NS
SS 102	0.0	292+80.0	5.60-6.05	A-4(3)	32	9	0.4	50.0	16.4	33.2	100.0	99.9	56.1	43	NS
SS 30	0.0	294+60.0	0.80-1.25	A-6(2)	34	17	21.9	42.7	7.2	28.2	100.0	94.0	36.9	22	NS
SS 31	0.0	294+60.0	1.50-1.95	A-2-6(1)	32	15	22.2	50.9	0.4	26.5	94.9	91.5	28.9	18	NS
SS 32	0.0	294+60.0	4.10-4.55	A-3(0)	25	NP	2.0	89.7	0.3	8.0	100.0	99.8	8.8	25	NS

DESCRIPTION:
US 74 FROM SR 1003 TO I-95
 PREPARED BY:
CALIN
 ENGINEERS and SCIENTISTS
 WILMINGTON, NORTH CAROLINA
 DATE: 0600

PROJECT NO.: 6.469002T
 TIP NO.: R-0513C
 COUNTY: ROEBSON

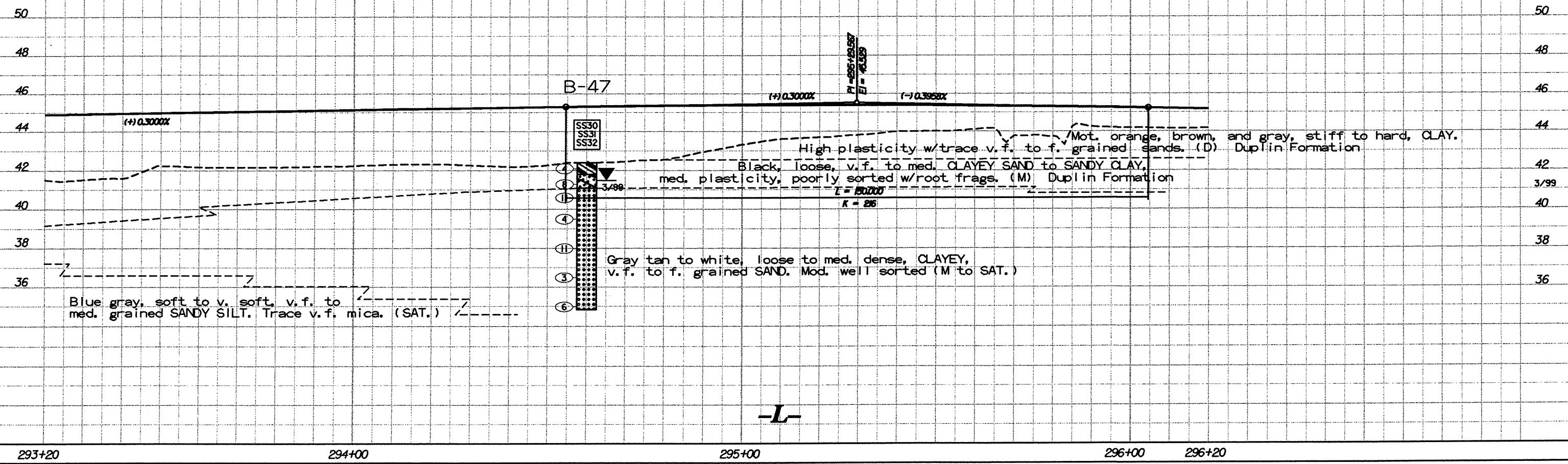
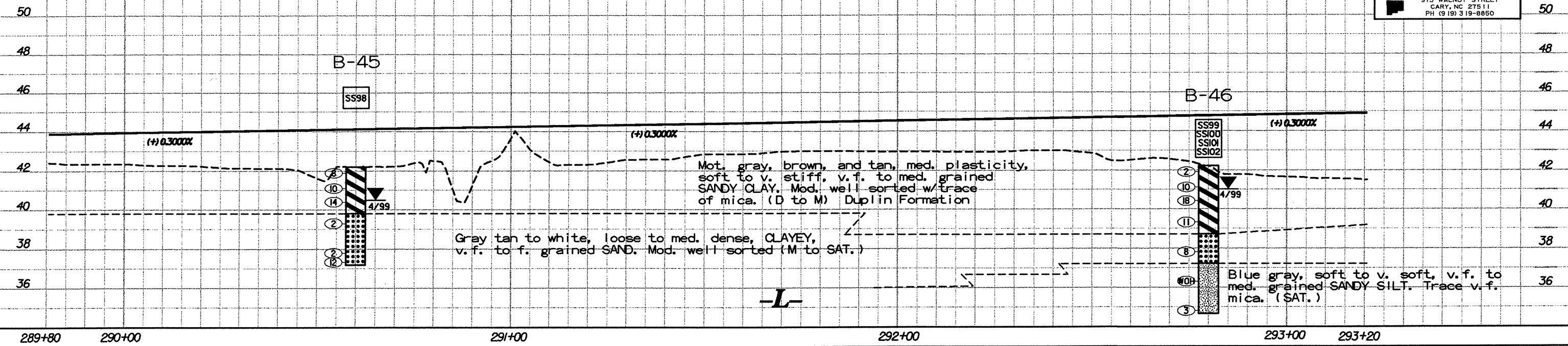
SHEET NO.: 59
 ROADWAY DESIGN ENGINEER
 HYDRAULICS ENGINEER

5m 0 10m

PRELIMINARY PLANS
 DO NOT USE FOR CONSTRUCTION
INCOMPLETE PLANS
 DO NOT USE FOR R/W ACQUISITION

CONST. REV. _____
 RW REV. _____

TGS
 ADAPTED FROM:
 TGS ENGINEERS
 975 WALNUT STREET
 CARY, NC 27511
 PH (919) 319-8850



Pro06/DGN