

SOIL TEST RESULTS

SAMPLE NO.	OFFSET	STATION	DEPTH INTERVAL	AASHTO CLASS.	L.L.	P.L.I.	% BY WEIGHT				% PASSING SIEVES			% MOISTURE	% ORGANIC
							C. SAND	F. SAND	SILT	CLAY	10	40	200		
SS 67	11.6 Lt.	14+00.0	0.00-0.45	A-2-6(1)	33	14	10.2	63.4	0.8	25.6	92.9	91.3	29.5	20	NS
SS 68	11.6 Lt.	14+00.0	0.80-1.25	A-2-6(1)	38	19	8.4	68.1	1.4	22.1	100.0	93.7	24.6	20	NS
SS 69	11.6 Lt.	14+00.0	1.50-1.95	A-2-4(0)	21	NP	55.8	33.4	0.8	10.0	99.8	83.1	11.5	20	NS
SS 14	14.9 Rt.	15+57.4	0.80-1.25	A-7-6(5)	41	25	9.9	49.1	8.0	33.0	96.0	93.7	45.1	23	NS
SS 15	14.9 Rt.	15+57.4	7.00-7.45	A-2-7(0)	45	24	72.5	14.7	0.9	11.9	94.3	49.9	13.3	30	NS
SS 16	14.9 Rt.	15+57.4	8.50-8.95	A-1-b(0)	24	NP	86.1	10.4	0.8	2.7	97.5	38.6	4.1	20	NS

DESCRIPTION:

US 74 FROM SR1003 TO I-95



PROJECT NO.: 6.469002T SHEET NO. 62

TIP NO.: R-0513C

COUNTY: ROBESON

ROADWAY DESIGN ENGINEER HYDRAULICS ENGINEER

PREPARED BY:



ENGINEERS and SCIENTISTS
WILMINGTON, NORTH CAROLINA

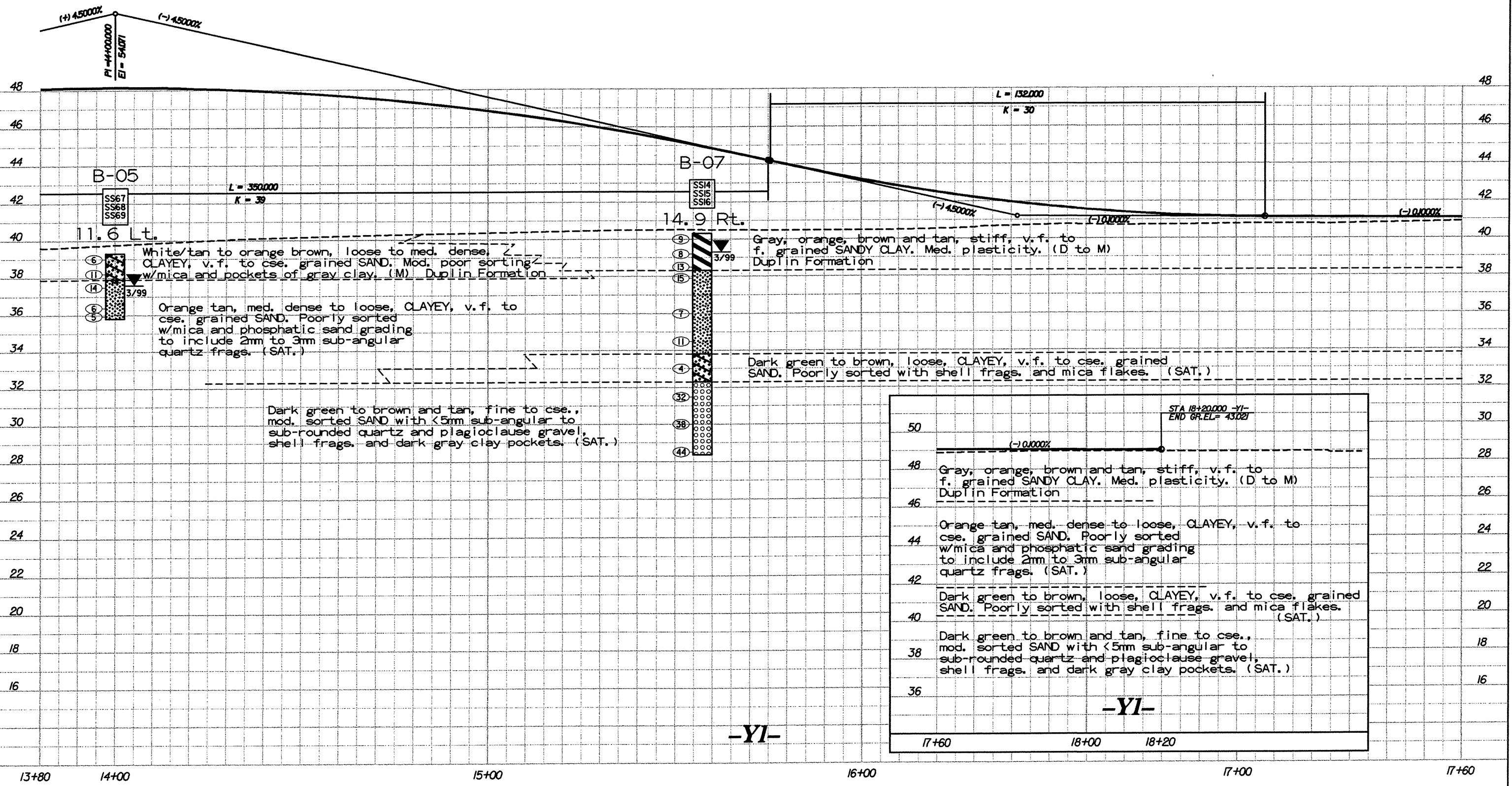
DATE: 0600

CONST. REV. _____
RW REV. _____

PRELIMINARY PLANS
DO NOT USE FOR CONSTRUCTION

INCOMPLETE PLANS
DO NOT USE FOR R/W ACQUISITION

TGS ENGINEERS
ADAPTED FROM:
TGS ENGINEERS
975 WALNUT STREET
CARY, NC 27511
PH (919) 319-8850



Pro062.DGN