

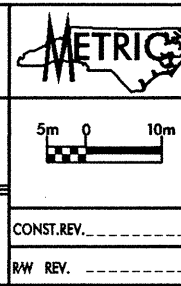
SOIL TEST RESULTS

SAMPLE NO.	OFFSET	STATION	DEPTH INTERVAL	AASHTO CLASS.	L.L.	P.L.	% BY WEIGHT				% PASSING SIEVES			% MOISTURE	% ORGANIC
							C. SAND	F. SAND	SILT	CLAY	10	40	200		
SS 14	0.0	4+60.0	0.80-1.25	A-7-6(5)	41	25	9.9	49.1	8.0	33.0	96.0	93.7	45.1	23	NS
SS 15	0.0	4+60.0	7.00-7.45	A-2-7(0)	45	24	72.5	14.7	0.9	11.9	94.3	49.9	13.3	30	NS
SS 16	0.0	4+60.0	8.50-8.95	A-1-b(0)	24	NP	86.1	10.4	0.8	2.7	97.5	38.6	4.1	20	NS

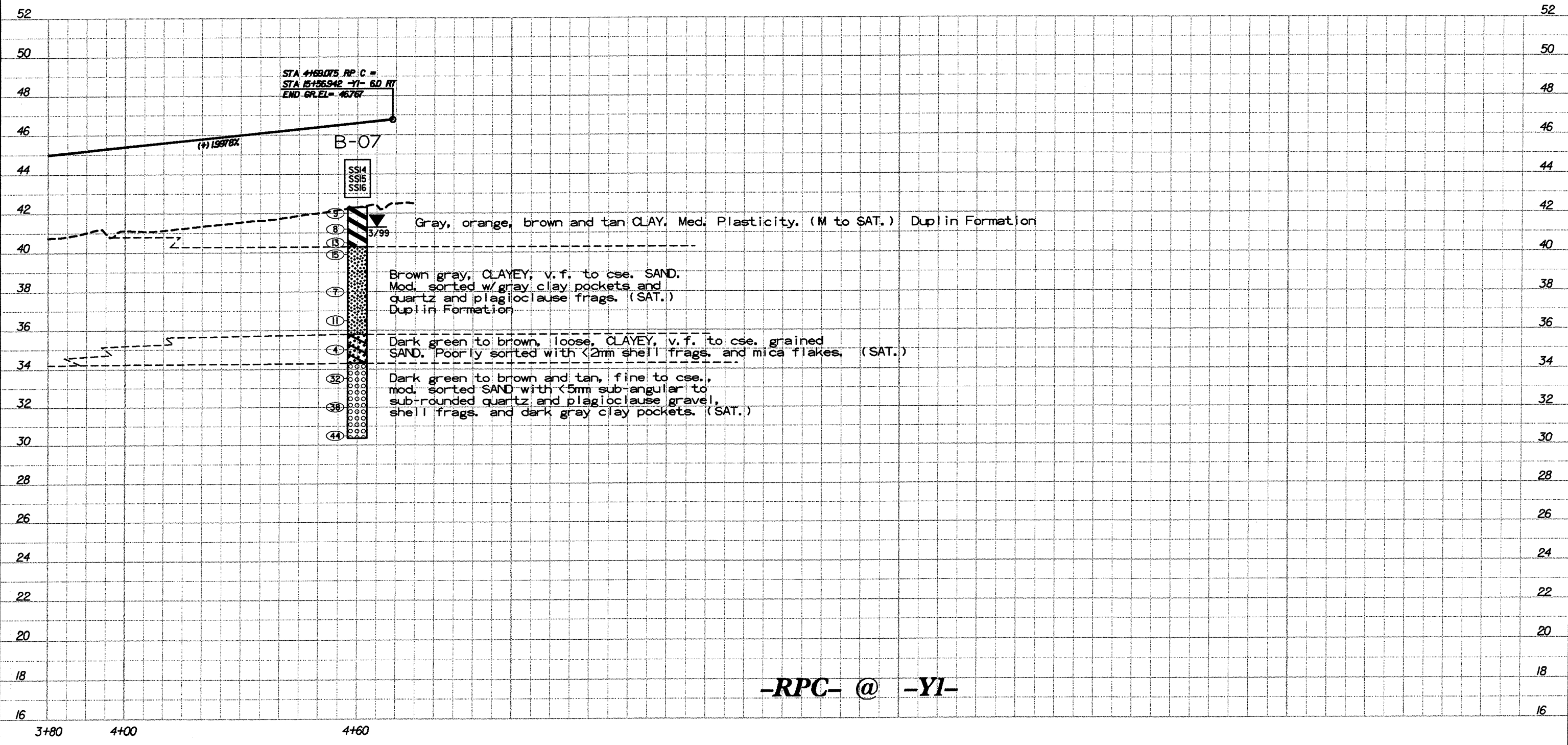
DESCRIPTION:
US 74 FROM SR1003 TO I-95

PREPARED BY:
CAELIN
 ENGINEERS and SCIENTISTS
 WILMINGTON, NORTH CAROLINA

DATE: 06/00



PROJECT NO.: 6.469002T	SHEET NO. 68
TIP NO.: R-0513C	COUNTY: ROBESON
ROADWAY DESIGN ENGINEER	HYDRAULICS ENGINEER
PRELIMINARY PLANS DO NOT USE FOR CONSTRUCTION INCOMPLETE PLANS DO NOT USE FOR ACQUISITION	
TGS ADAPTED FROM: TGS ENGINEERS 975 WALNUT STREET CARY, NC 27511 PH (919) 319-8850	



-RPC- @ -YI-

Pr0068.DGN