

SOIL TEST RESULTS

| SAMPLE NO. | OFFSET | STATION | DEPTH INTERVAL | AASHTO CLASS. | L.L. | P.L. | % BY WEIGHT |         |      |      | % PASSING SIEVES |      |      | % MOISTURE | % ORGANIC |
|------------|--------|---------|----------------|---------------|------|------|-------------|---------|------|------|------------------|------|------|------------|-----------|
|            |        |         |                |               |      |      | C. SAND     | F. SAND | SILT | CLAY | 10               | 40   | 200  |            |           |
| SS 14      | 5.2 Rt | 5+22    | 0.80-1.25      | A-7-6(5)      | 41   | 25   | 9.9         | 49.1    | 8.0  | 33.0 | 96.0             | 93.7 | 45.1 | 23         | NS        |
| SS 15      | 5.2 Rt | 5+22    | 7.00-7.45      | A-2-7(0)      | 45   | 24   | 72.5        | 14.7    | 0.9  | 11.9 | 94.3             | 49.9 | 13.3 | 30         | NS        |
| SS 16      | 5.2 Rt | 5+22    | 8.50-7.95      | A-1-b(0)      | 24   | NP   | 86.1        | 10.4    | 0.8  | 2.7  | 97.5             | 38.6 | 4.1  | 20         | NS        |

DESCRIPTION:

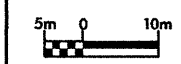
US 74 FROM SR1003 TO I-95

PREPARED BY:

**CAELIN**

ENGINEERS and SCIENTISTS  
WILMINGTON, NORTH CAROLINA

DATE: 0600



CONST. REV. \_\_\_\_\_

R/W REV. \_\_\_\_\_

PROJECT NO.: 6.469002T SHEET NO. 70

TIP NO.: R-0513C

COUNTY: ROBESON

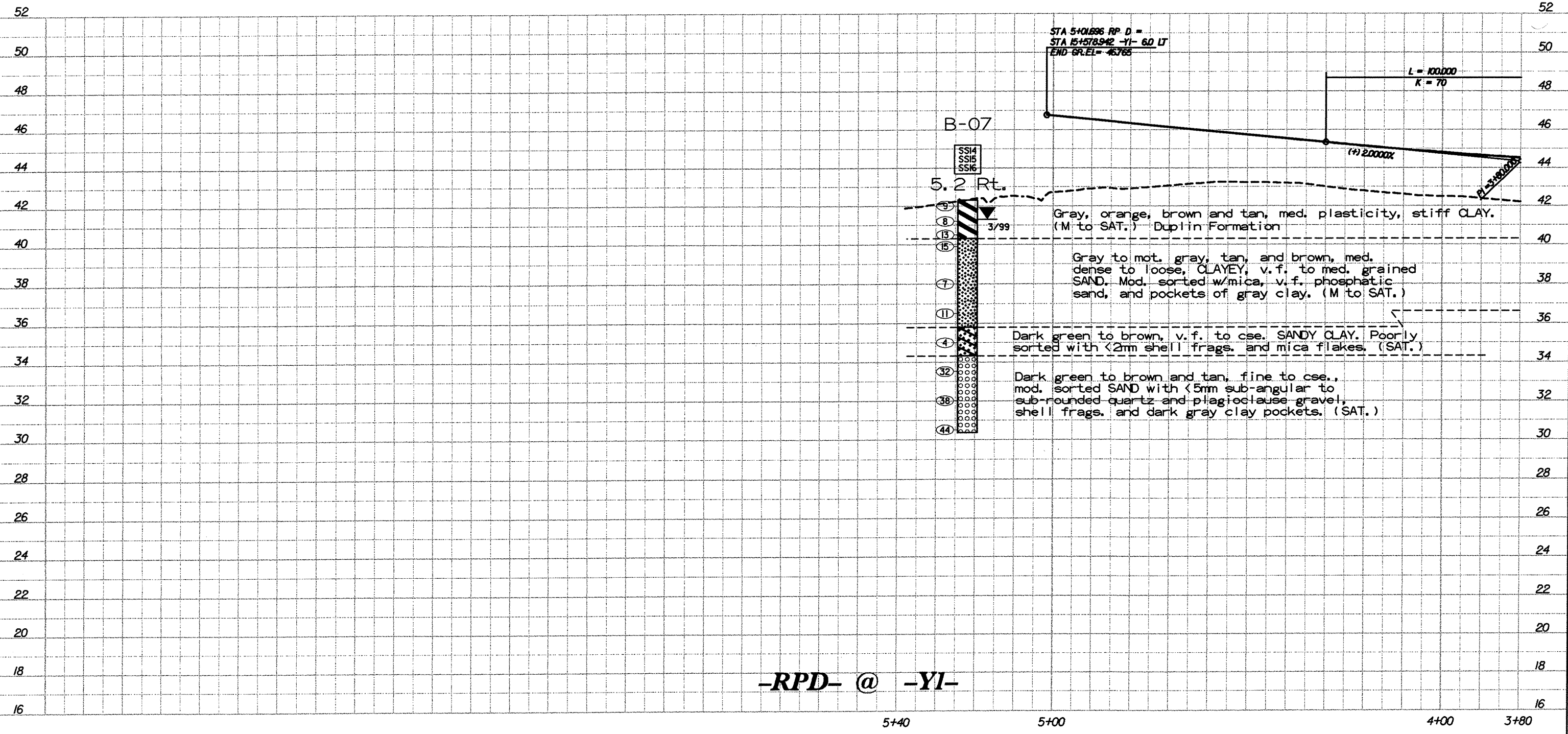
ROADWAY DESIGN ENGINEER

HYDRAULICS ENGINEER

PRELIMINARY PLANS  
DO NOT USE FOR CONSTRUCTION

INCOMPLETE PLANS  
DO NOT USE FOR R/W ACQUISITION

TGS  
ADAPTED FROM:  
TGS ENGINEERS  
975 WALNUT STREET  
CARY, NC 27511  
PH (919) 319-8850



-RPD- @ -YI-

ProDT0.dgn