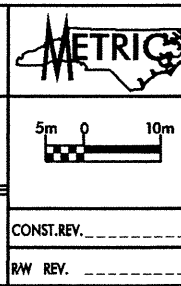


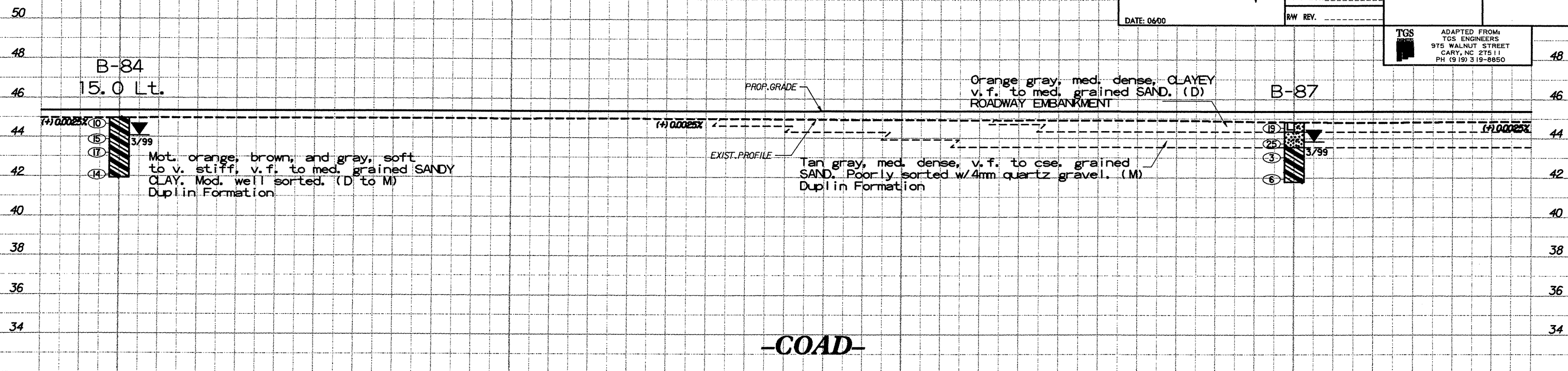
DESCRIPTION:
 US 74 FROM SR 1003
 TO I-95

PREPARED BY:
CALIN
 ENGINEERS and SCIENTISTS
 WILMINGTON, NORTH CAROLINA

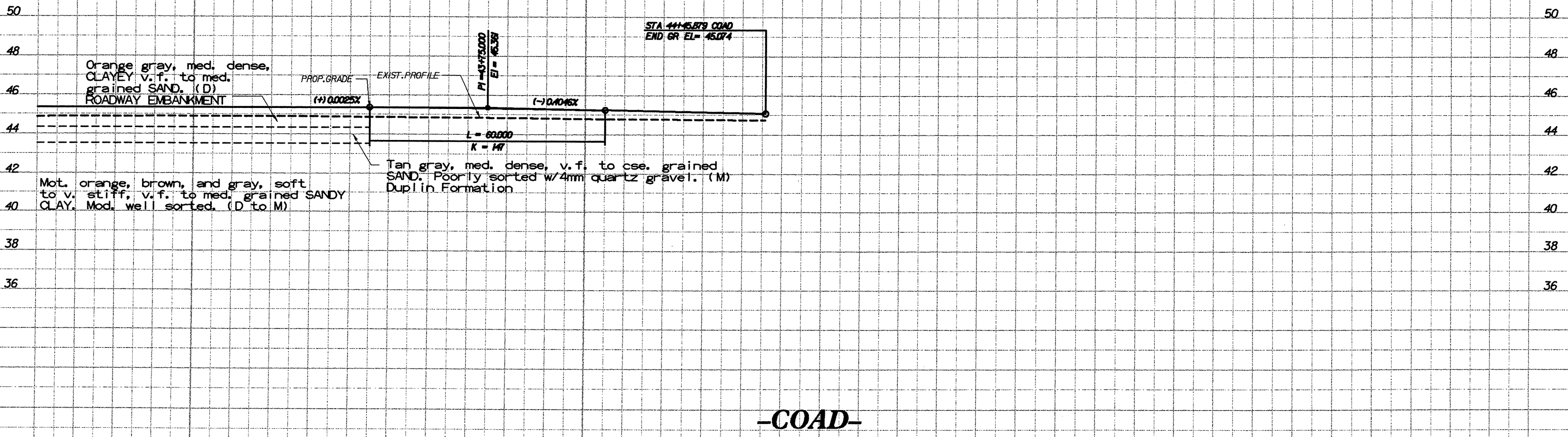
DATE: 06/00



PROJECT NO.: 6.469002T	SHEET NO. 77
TIP NO.: R-0513C	
COUNTY: ROBESON	
ROADWAY DESIGN ENGINEER	HYDRAULICS ENGINEER
PRELIMINARY PLANS DO NOT USE FOR CONSTRUCTION	
INCOMPLETE PLANS DO NOT USE FOR R/W ACQUISITION	
TGS ADAPTED FROM: TGS ENGINEERS 975 WALNUT STREET CARY, NC 27511 PH (919) 319-8850	



-COAD-



-COAD-

Pr0077.DGN