

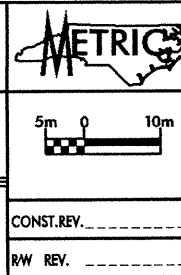
SOIL TEST RESULTS

| SAMPLE NO. | OFFSET | STATION | DEPTH INTERVAL | AASHTO CLASS. | L.L. | P.L.I. | % BY WEIGHT | | | | % PASSING SIEVES | | | % MOISTURE | % ORGANIC |
|------------|----------|---------|----------------|---------------|------|--------|-------------|---------|------|------|------------------|------|------|------------|-----------|
| | | | | | | | C. SAND | F. SAND | SILT | CLAY | 10 | 40 | 200 | | |
| SS 44 | 21.5 Rt. | 30+47.7 | 0.80-1.25 | A-6(3) | 40 | 13 | 3.2 | 53.7 | 10.8 | 32.3 | 99.8 | 98.7 | 46.9 | 21 | NS |
| SS 45 | 21.5 Rt. | 30+47.7 | 4.10-4.55 | A-2-4(0) | 21 | NP | 10.5 | 72.8 | 4.2 | 12.5 | 99.6 | 98.7 | 17.8 | 28 | NS |
| SS 46 | 21.5 Rt. | 30+47.7 | 8.60-9.05 | A-1-6(0) | 25 | NP | 76.3 | 13.9 | 5.8 | 4.0 | 81.5 | 39.6 | 10.7 | 22 | NS |
| SS 47 | 21.5 Rt. | 30+47.7 | 14.70-15.15 | A-7-6(11) | 41 | 21 | 16.0 | 27.1 | 30.3 | 26.6 | 98.8 | 90.7 | 62.3 | 19 | NS |
| SS 48 | 21.5 Rt. | 30+47.7 | 22.30-22.75 | A-2-4(0) | 22 | NP | 23.9 | 63.0 | 5.1 | 8.0 | 99.9 | 91.4 | 15.6 | 23 | NS |

DESCRIPTION:
US 74 FROM SR 1003 TO I-95

PREPARED BY:
CAULIN
ENGINEERS and SCIENTISTS
WILMINGTON, NORTH CAROLINA

DATE: 06/00



PROJECT NO.: 6.469002T SHEET NO. 79

TIP NO.: R-0513C

COUNTY: ROBESON

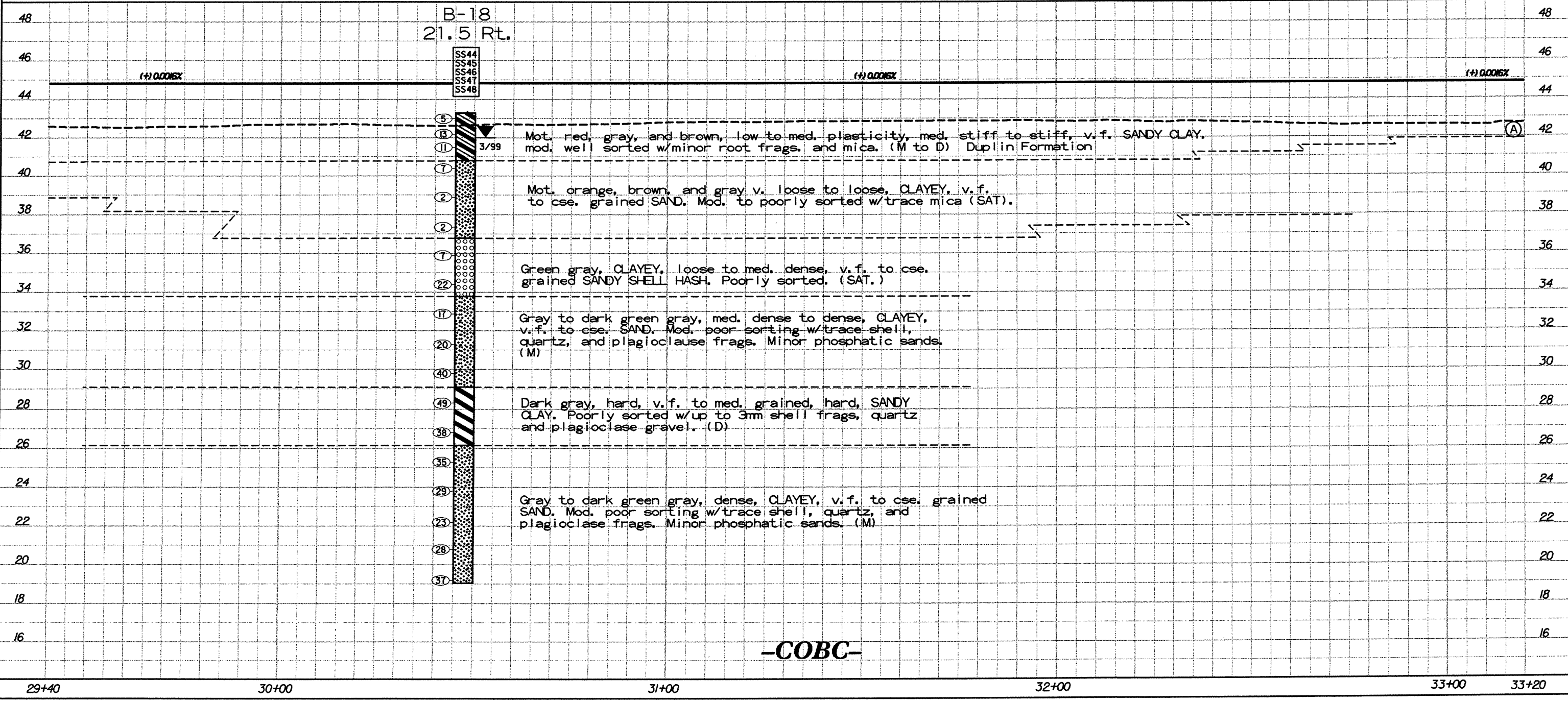
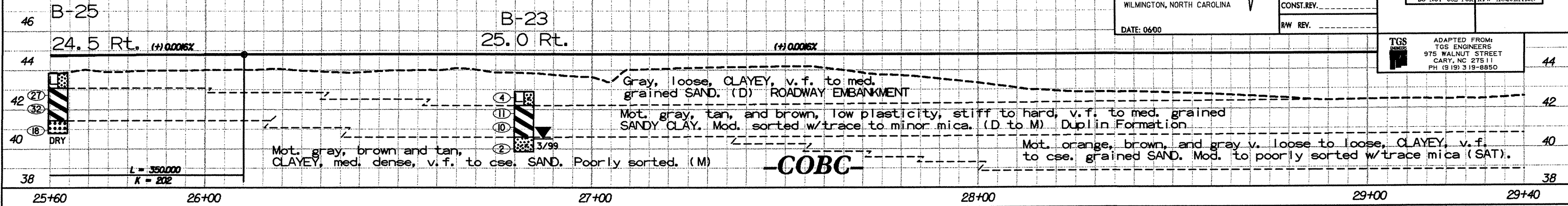
ROADWAY DESIGN ENGINEER

HYDRAULICS ENGINEER

PRELIMINARY PLANS
DO NOT USE FOR CONSTRUCTION

INCOMPLETE PLANS
DO NOT USE FOR R/W ACQUISITION

TGS
ADAPTED FROM:
TGS ENGINEERS
975 WALNUT STREET
CARY, NC 27511
PH (919) 319-8850



Pro079.DGN