

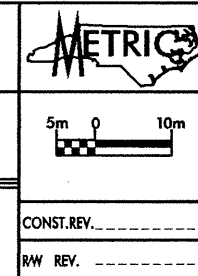
SOIL TEST RESULTS

SAMPLE NO.	OFFSET	STATION	DEPTH INTERVAL	AASHTO CLASS.	L.L.	P.L.I.	% BY WEIGHT				% PASSING SIEVES			% MOISTURE	% ORGANIC
							C. SAND	F. SAND	SILT	CLAY	10	40	200		
SS 17	19.9 Lt	3+25.0	0.80-1.25	A-7-6(6)	43	25	11.1	49.4	6.7	32.8	97.6	96.4	41.9	22	NS
SS 18	19.9 Lt	3+25.0	4.10-4.55	A-3(0)	24	NP	47.0	47.7	2.3	3.0	99.9	96.9	6.1	24	NS
SS 19	19.9 Lt	3+25.0	7.10-7.55	A-3(0)	22	NP	37.2	57.7	*	*	99.9	82.9	6.0	24	NS
SS 20	19.9 Lt	3+25.0	8.60-9.05	A-6(2)	35	19	46.8	21.2	11.3	20.7	89.2	66.7	35.8	20	NS
SS 21	19.9 Lt	3+25.0	11.60-12.05	A-2-4(0)	29	8	64.8	16.9	4.8	13.5	98.9	61.7	19.2	21	NS
SS 22	19.9 Lt	3+25.0	13.70-14.15	A-6(6)	33	14	17.8	26.6	38.0	17.6	97.1	88.0	61.5	18	NS
SS 44	21.5 Lt	0+24.0	0.80-1.25	A-6(3)	40	13	3.2	53.7	10.8	32.3	99.8	98.7	46.9	21	NS
SS 45	21.5 Lt	0+24.0	4.10-4.55	A-2-4(0)	21	NP	10.5	72.8	4.2	12.5	99.6	98.7	17.8	28	NS
SS 46	21.5 Lt	0+24.0	8.60-9.05	A-1-6(0)	25	NP	76.3	13.9	5.8	4.0	81.5	39.6	10.7	22	NS
SS 47	21.5 Lt	0+24.0	14.70-15.15	A-7-6(11)	41	21	16.0	27.1	30.3	26.6	98.8	90.7	62.3	19	NS
SS 48	21.5 Lt	0+24.0	22.30-22.75	A-2-4(0)	22	NP	23.9	63.0	5.1	8.0	99.9	91.4	15.6	23	NS

DESCRIPTION:
US 74 FROM SR1003 TO I-95

PREPARED BY:
CAELIN
ENGINEERS and SCIENTISTS
WILMINGTON, NORTH CAROLINA

DATE: 06/00



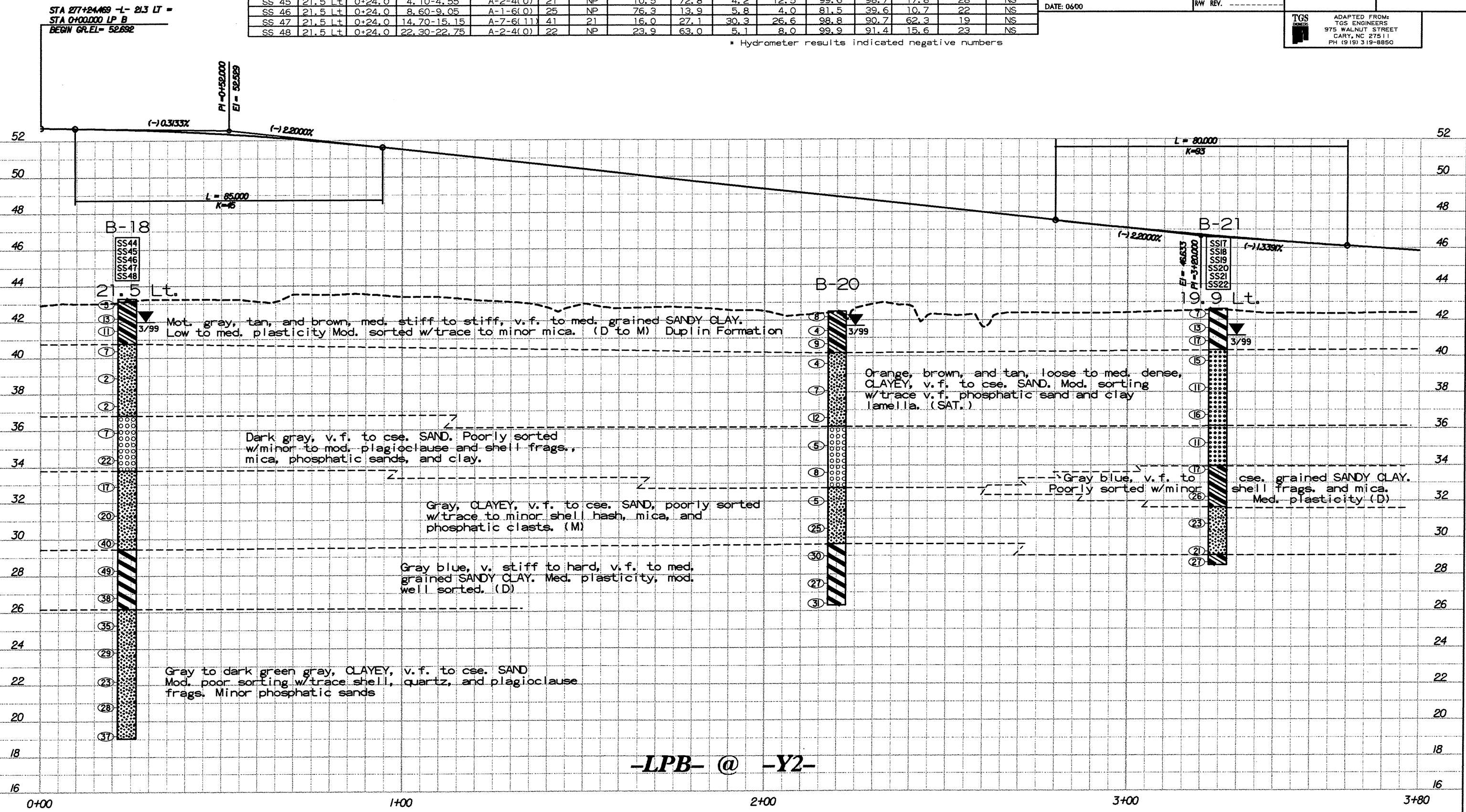
PROJECT NO.: 6.469002T SHEET NO. 94
TIP NO.: R-0513C
COUNTY: ROBESON

ROADWAY DESIGN ENGINEER
HYDRAULICS ENGINEER

PRELIMINARY PLANS
DO NOT USE FOR CONSTRUCTION
INCOMPLETE PLANS
DO NOT USE FOR R/W ACQUISITION

TGS
ADAPTED FROM:
TGS ENGINEERS
975 WALNUT STREET
CARY, NC 27511
PH (919) 319-8850

* Hydrometer results indicated negative numbers



-LPB- @ -Y2-

Pro094.DGN