

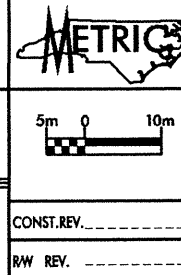
SOIL TEST RESULTS

SAMPLE NO.	OFFSET	STATION	DEPTH INTERVAL	AASHTO CLASS.	L.L.	P.L.I.	% BY WEIGHT				% PASSING SIEVES			% MOISTURE	% ORGANIC
							C. SAND	F. SAND	SILT	CLAY	10	40	200		
SS 23	18.1 Rt	3+28.0	5.60-6.05	A-7-5(59)	89	57	8.0	4.1	24.4	63.5	94.7	93.2	89.7	90	NS
SS 24	18.1 Rt	3+28.0	7.10-7.55	A-2-6(0)	38	13	79.0	20.4	0.4	0.2	72.6	31.9	3.9	41	NS
SS 25	18.1 Rt	3+28.0	11.70-12.15	A-1-b(0)	29	NP	75.7	9.2	5.1	10.0	98.7	49.1	15.6	24	NS
SS 62	22.9 Lt	0+45.5	13.20-13.65	A-2-4(0)	22	NP	36.1	34.4	19.5	10.0	99.7	79.2	34.5	10	NS
SS 63	22.9 Lt	0+45.5	23.60-24.05	A-7-5(50)	74	42	0.5	1.2	25.8	72.5	99.9	99.8	98.7	36	NS

DESCRIPTION:
US 74 FROM SR1003 TO I-95

PREPARED BY:
CALIN
ENGINEERS and SCIENTISTS
WILMINGTON, NORTH CAROLINA

DATE: 06/00



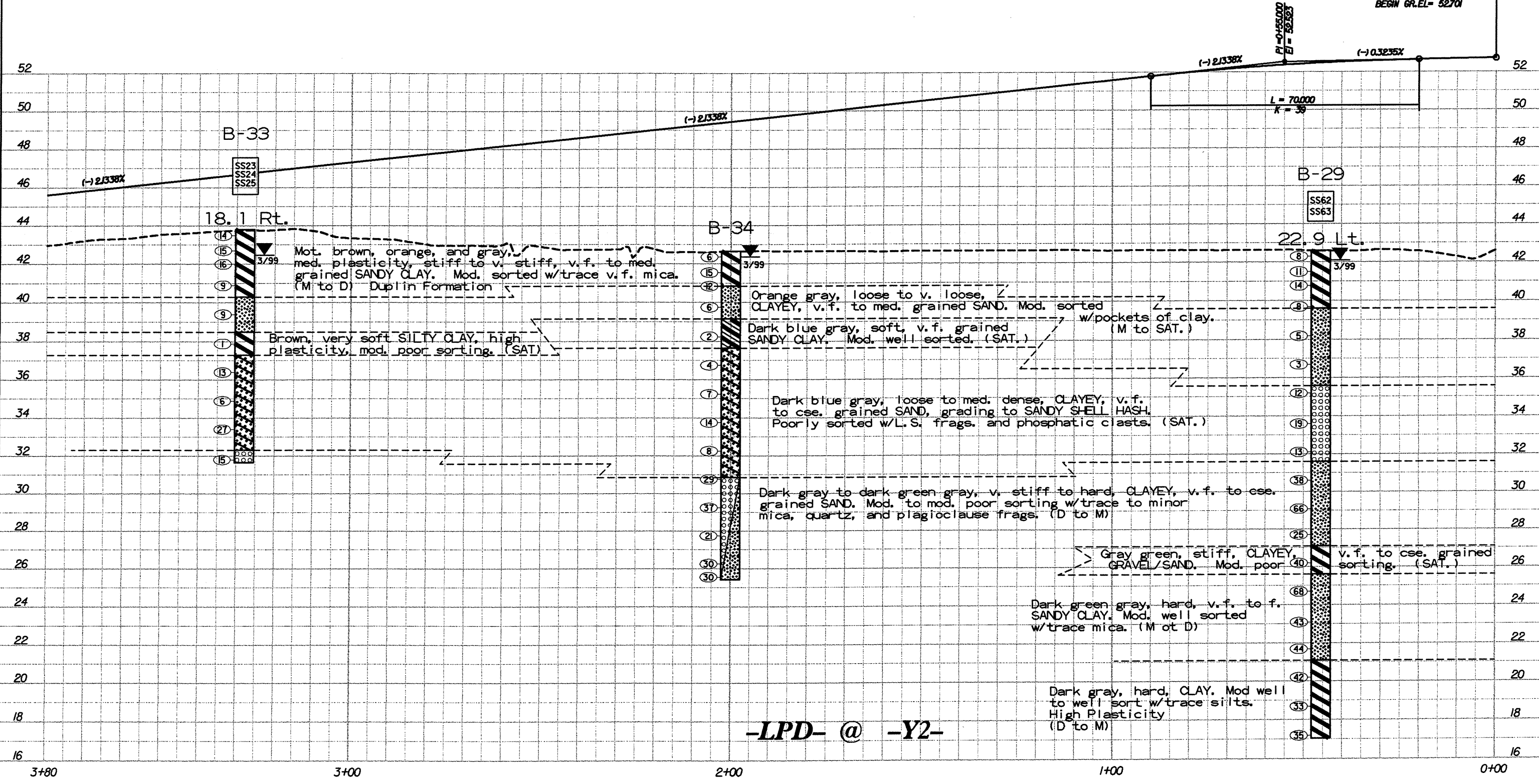
PROJECT NO.: 6.469002T SHEET NO. 97
TIP NO.: R-0513C
COUNTY: ROBESON

ROADWAY DESIGN ENGINEER
HYDRAULICS ENGINEER

PRELIMINARY PLANS
DO NOT USE FOR CONSTRUCTION
INCOMPLETE PLANS
DO NOT USE FOR R/W ACQUISITION

TGS ENGINEERS
ADAPTED FROM:
TGS ENGINEERS
975 WALNUT STREET
CARY, NC 27511
PH (919) 318-8850

STA 278+23.24 -L- 21.3 RT -
STA 0+100.000 LP D
BEGIN GR. EL= 52701



-LPD- @ -Y2-

Pr0097.DGN