

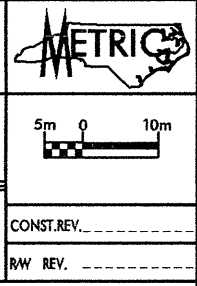
SOIL TEST RESULTS

SAMPLE NO.	OFFSET	STATION	DEPTH INTERVAL	AASHTO CLASS.	L.L.	P.L.	% BY WEIGHT				% PASSING SIEVES			% MOISTURE	% ORGANIC
							C. SAND	F. SAND	SILT	CLAY	10	40	200		
SS 49	0.0	5+31.4	0.80-1.25	A-6(4)	36	23	17.2	44.5	7.1	31.2	99.7	93.1	39.2	22	NS
SS 50	0.0	5+31.4	1.50-1.95	A-3(0)	21	NP	19.4	70.9	2.7	7.0	100.0	95.3	10.3	22	NS
SS 51	0.0	5+31.4	4.10-4.55	A-4(0)	26	NP	4.8	14.3	64.8	16.1	100.0	99.1	81.9	32	NS
SS 52	0.0	5+31.4	8.60-9.05	A-1-b(0)	23	NP	93.8	4.6	0.8	0.8	99.7	21.1	1.8	15	NS
SS 53	0.0	5+31.4	16.30-16.75	A-6(3)	40	26	54.8	10.5	4.3	30.4	98.6	70.4	35.6	19	NS
SS 54	0.0	5+31.4	19.30-19.75	A-1-b(0)	30	NP	88.1	5.9	0.0	6.0	97.4	24.9	6.5	25	NS
SS 55	0.0	5+31.4	20.80-21.25	A-7-6(25)	48	30	2.2	18.6	30.2	49.0	99.7	98.4	83.3	20	NS

DESCRIPTION:
US 74 FROM SR1003 TO I-95

PREPARED BY:
CAELIN
ENGINEERS and SCIENTISTS
WILMINGTON, NORTH CAROLINA

DATE: 0600



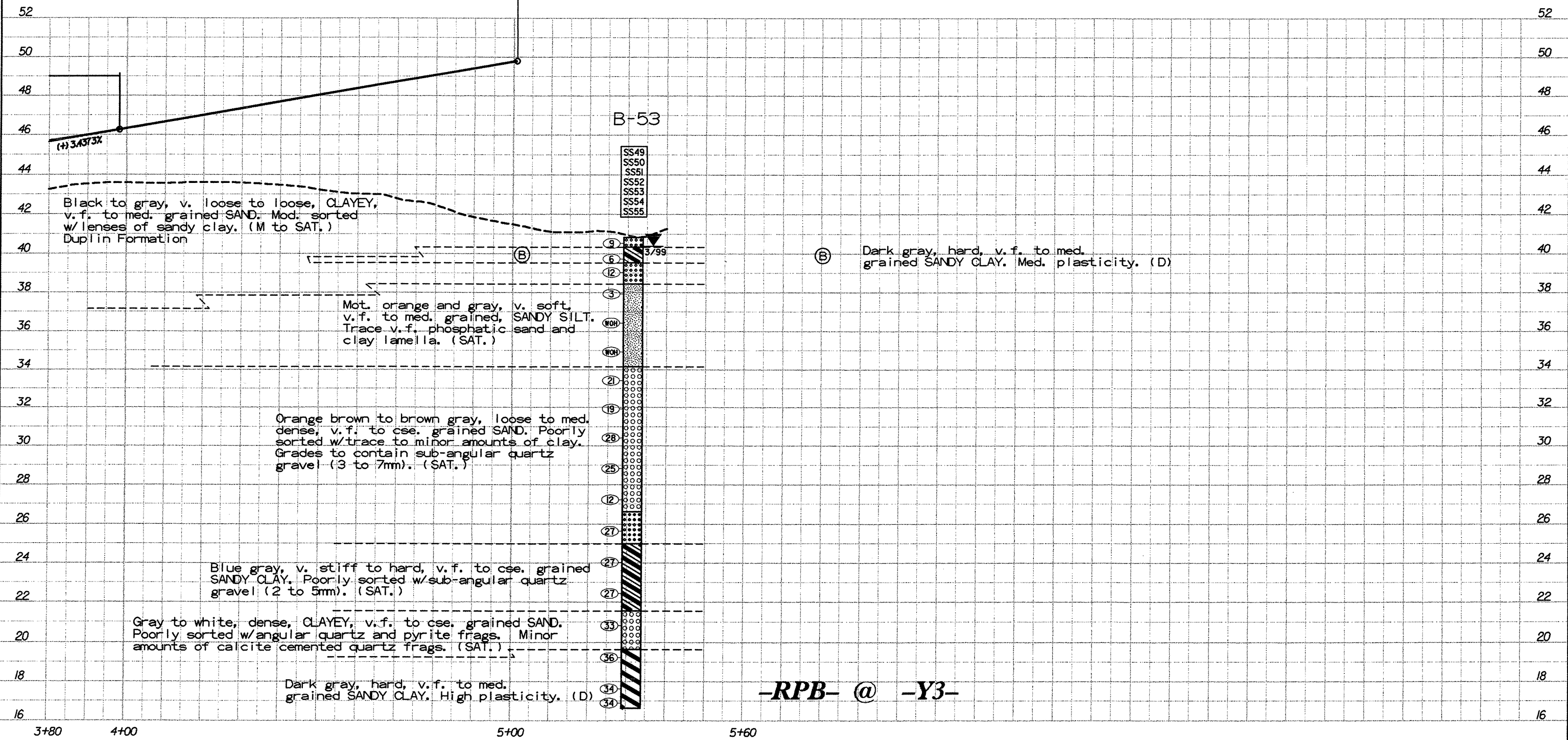
PROJECT NO.: 6.469002T SHEET NO. 105
TIP NO.: R-0513C
COUNTY: ROBESON

ROADWAY DESIGN ENGINEER
HYDRAULICS ENGINEER

PRELIMINARY PLANS
DO NOT USE FOR CONSTRUCTION
INCOMPLETE PLANS
DO NOT USE FOR R/F ACQUISITION

TGS
ADAPTED FROM:
TGS ENGINEERS
975 WALNUT STREET
CARY, NC 27511
PH (919) 319-8850

STA 5+00.948 RP B -
STA 31+97.059 -Y3- RT(2) 3.6 RT
END GR. EL = 49796



Pr0105.DGN