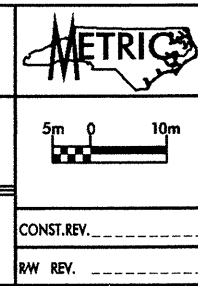


DESCRIPTION:
 US 74 FROM SR 1003
 TO I-95

PREPARED BY:
CALIN
 ENGINEERS and SCIENTISTS
 WILMINGTON, NORTH CAROLINA

DATE: 0600

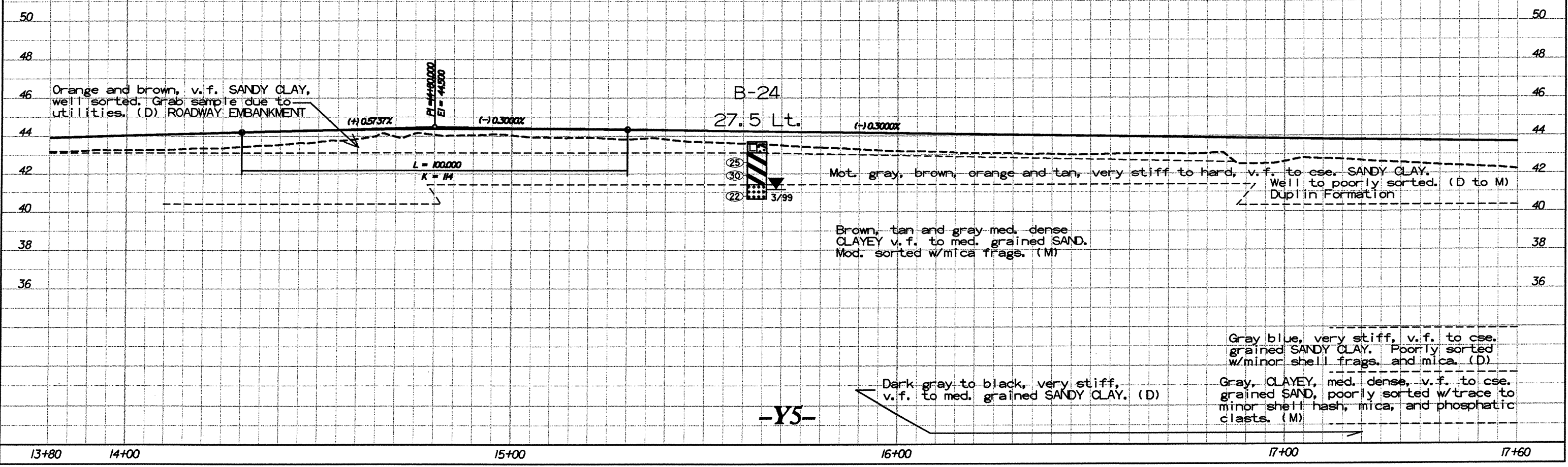
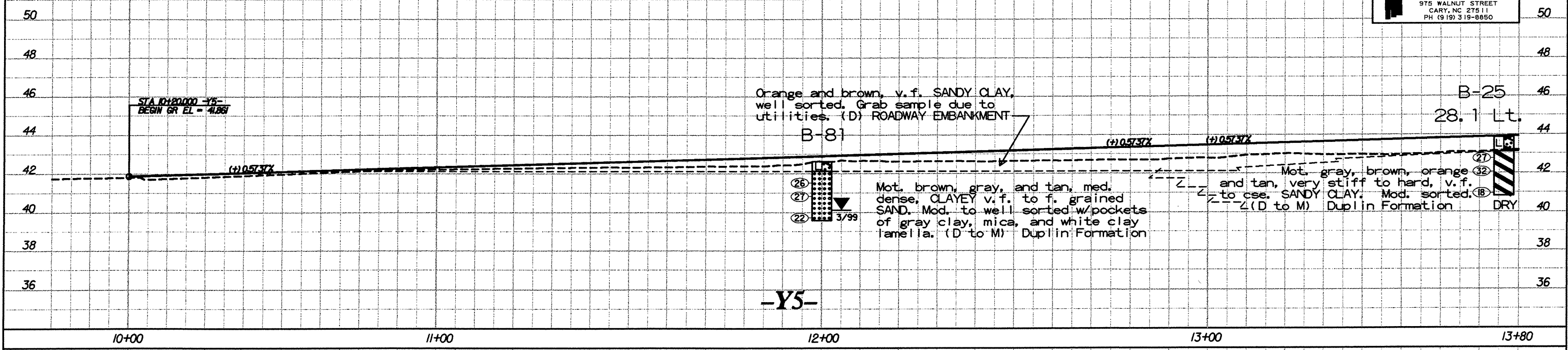


PROJECT NO.: G. 469002T
 TIP NO.: R-0513C
 COUNTY: ROBESON

ROADWAY DESIGN ENGINEER
 HYDRAULICS ENGINEER

PRELIMINARY PLANS
 DO NOT USE FOR CONSTRUCTION
INCOMPLETE PLANS
 DO NOT USE FOR R/W ACQUISITION

TGS
 ADAPTED FROM:
 TGS ENGINEERS
 975 WALNUT STREET
 CARY, NC 27511
 PH (919) 319-8850



Proj10.DGN