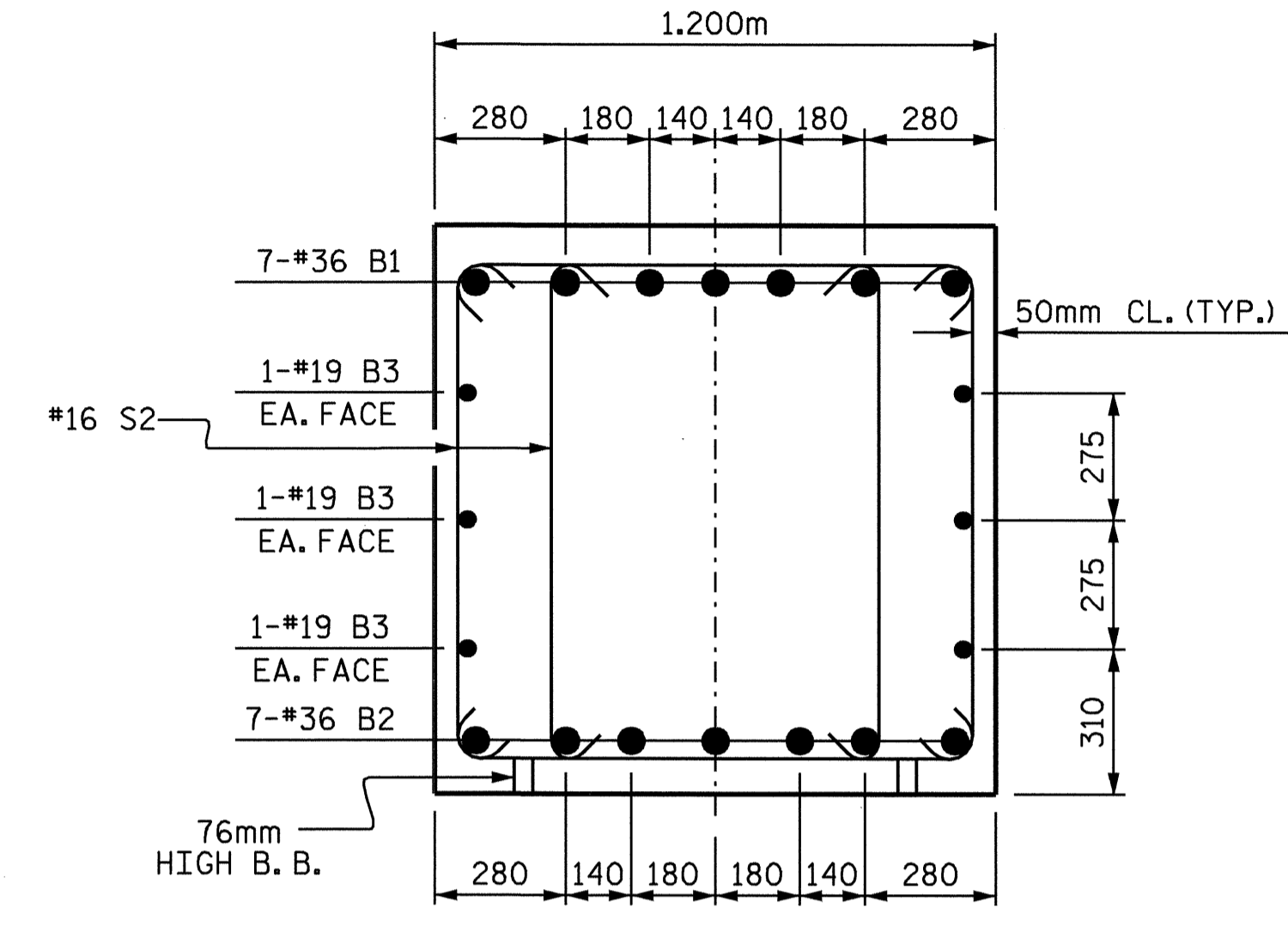
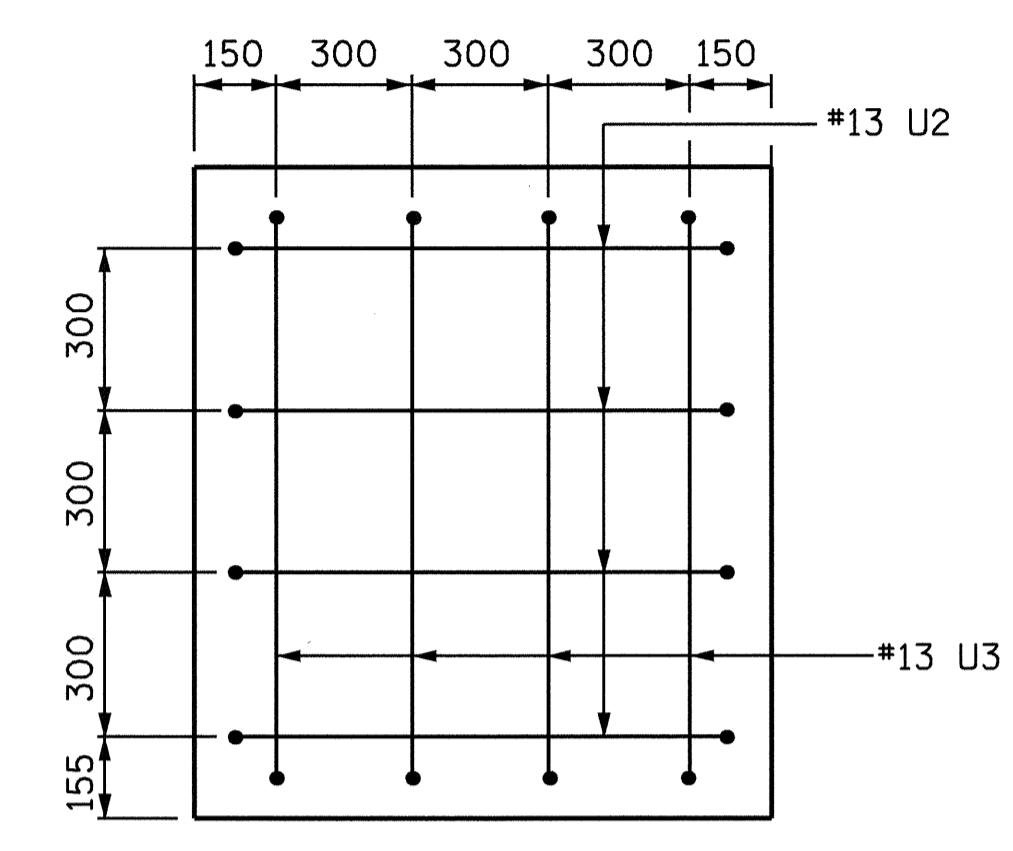


SECTION A-A



SECTION B-B



SECTION X-X

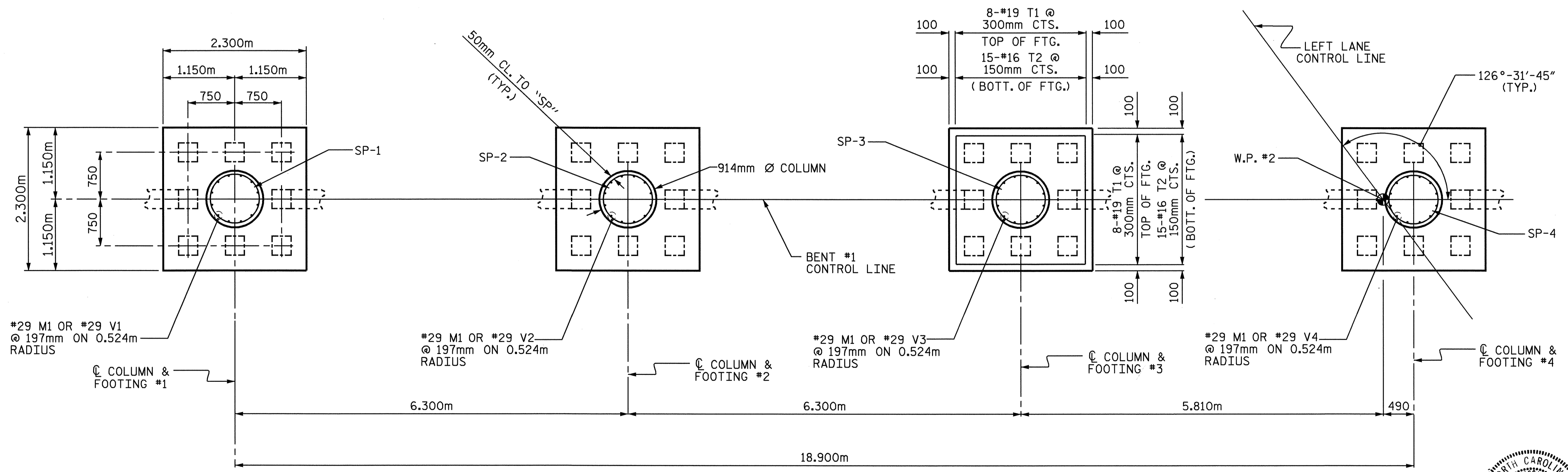
**BAR TYPES**

**BILL OF MATERIAL**

BENT 1					
BAR	NO.	SIZE	TYPE	LENGTH	WEIGHT
B1	14	36		13480	1492
B2	14	36	STR	12880	1426
B3	12	19	STR	11380	305
M1	48	29	1	2480	602
S1	63	16	2	3540	346
S2	48	16	2	3360	250
T1	48	19	STR	2140	230
T2	90	16	STR	2140	299
U1	54	13	3	2020	108
U2	8	13	3	1960	16
U3	8	13	3	1940	15
V1	12	29	1	6920	420
V2	12	29	1	7040	427
V3	12	29	1	7140	434
V4	12	29	1	7260	441
TOTAL REINFORCING STEEL (kg)					6811
SPIRAL REINFORCING STEEL (kg)					
SP-1	1	**	4	207280	206
SP-2	1	**	4	211180	210
SP-3	1	**	4	214860	214
SP-4	1	**	4	218900	218
TOTAL SPIRAL REINFORCING STEEL (kg)					848
CLASS A CONCRETE BREAKDOWN (m <sup>3</sup> )					
POUR #1 (FOOTINGS)					18.8
POUR #2 (COLUMNS)					15.9
POUR #3 (BENT CAP)					32.2
TOTAL					66.9
305mm P/S CONCRETE PILES					
NO.	32			METERS	352

ALL BAR DIMENSIONS ARE OUT TO OUT.

\* THE "SP" SPIRAL REINFORCING STEEL SHALL BE W20 OR D20 COLD DRAWN WIRE OR #13 PLAIN OR DEFORMED BAR.



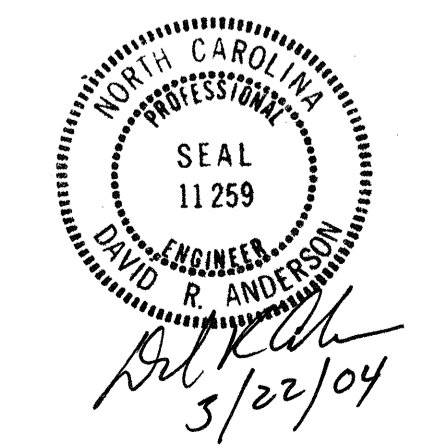
PLAN OF FOOTINGS

(INFORMATION IS TYPICAL IN FOOTING)

PROJECT NO. R-513C  
ROBESON COUNTY  
 STATION: 277+68.339 -L-  
 SHEET 2 OF 2

STATE OF NORTH CAROLINA DEPARTMENT OF TRANSPORTATION RALEIGH					
SUBSTRUCTURE BENT #1					
REVISIONS					
NO.	BY:	DATE:	NO.	BY:	DATE:
1			3		
2			4		

SHEET NO. 5-155  
TOTAL SHEETS 312



DRAWN BY : S. M. RASHIDI DATE : 5/03/02  
 CHECKED BY : N. TRAN DATE : 11/21/02