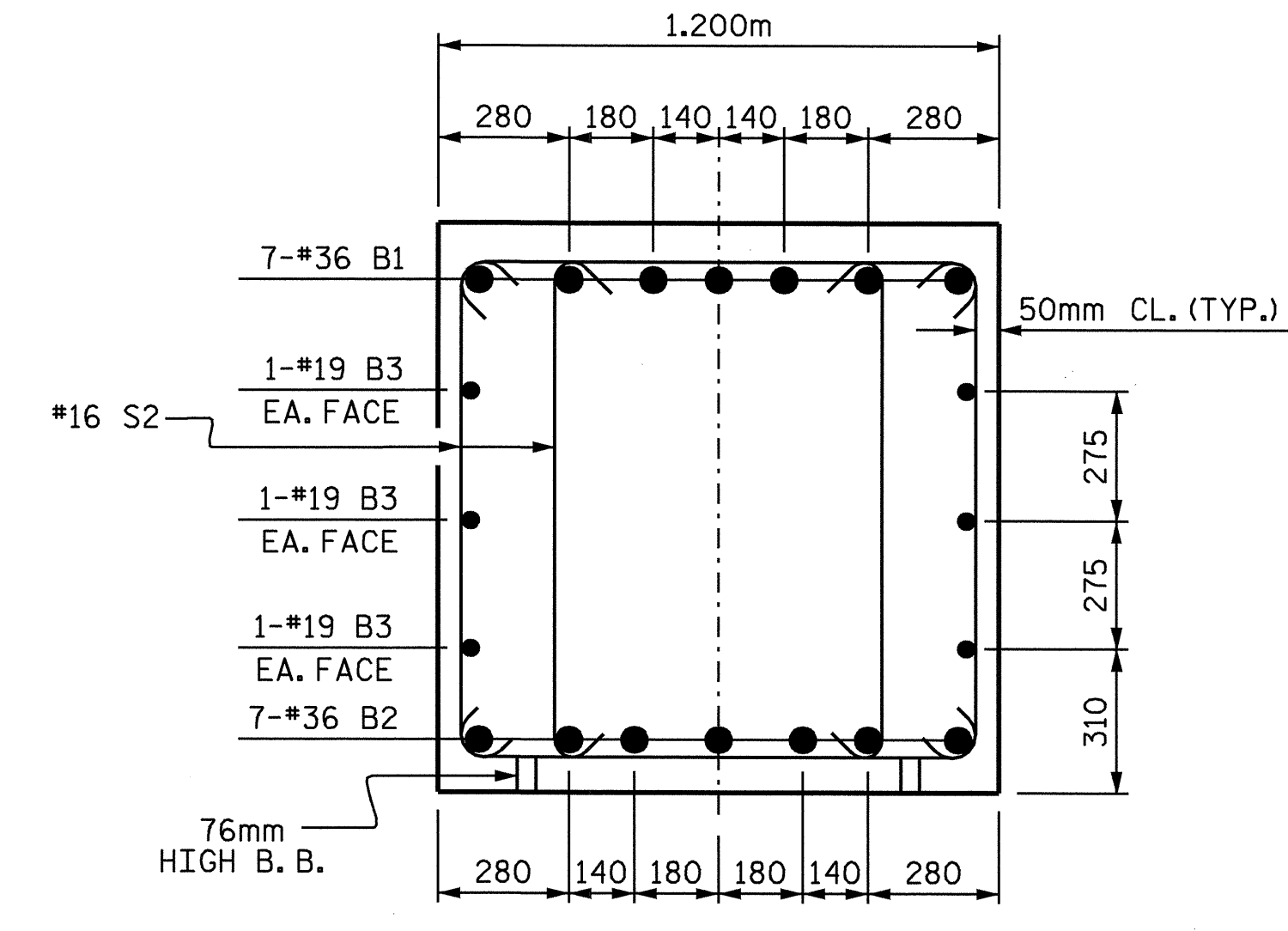
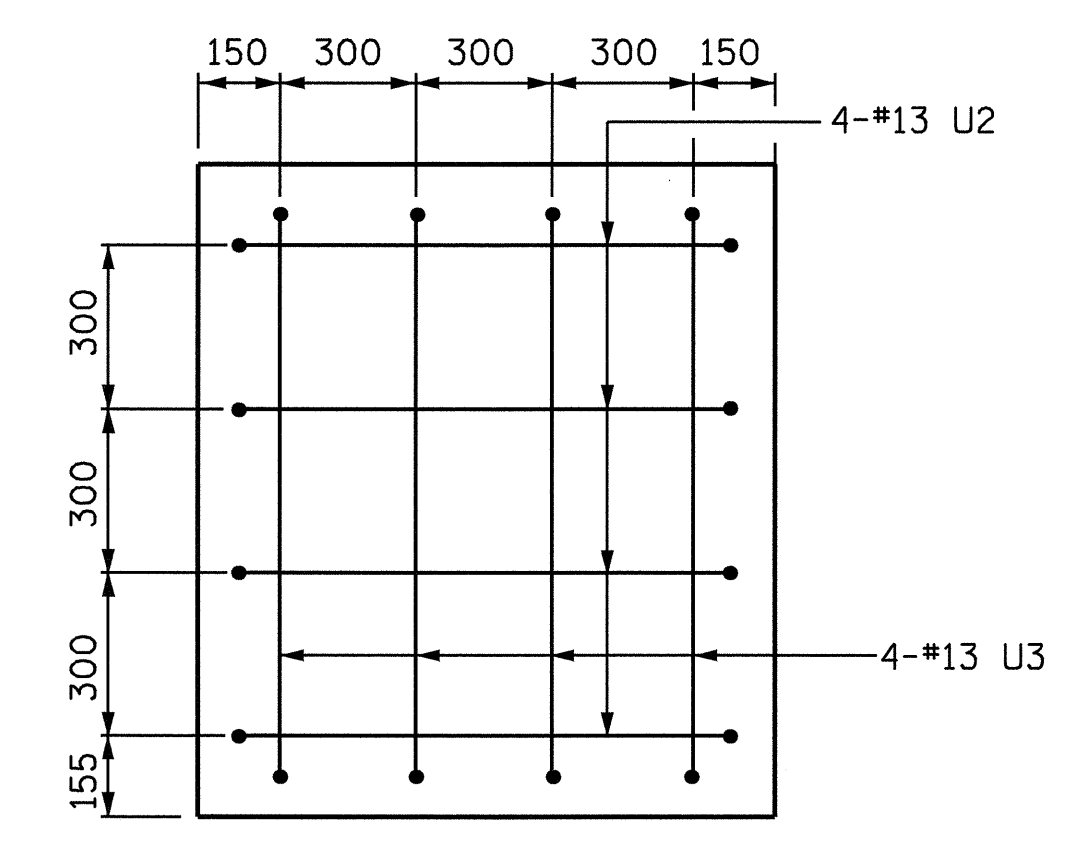


SECTION A-A



SECTION B-B



SECTION X-X

BAR TYPES

HK.	1	
475	13005	B1
375	2105	M1
375	5905	V1 -COL. 1
375	6045	V2 -COL. 2
375	6165	V3 -COL. 3
375	6305	V4 -COL. 4

BILL OF MATERIAL

BENT 3					
BAR NO.	SIZE	TYPE	LENGTH	WEIGHT	
B1	14	36	1	13480	1492
B2	14	36	STR	12880	1426
B3	12	19	STR	11380	305
M1	48	29	1	2480	602
S1	63	16	2	3540	346
S2	48	16	2	3360	250
T1	48	19	STR	2140	230
T2	90	16	STR	2140	299
U1	54	13	3	2020	108
U2	8	13	3	1960	16
U3	8	13	3	1940	15
V1	12	29	1	6280	381
V2	12	29	1	6420	390
V3	12	29	1	6540	397
V4	12	29	1	6680	406
TOTAL REINFORCING STEEL				(kg)	6663

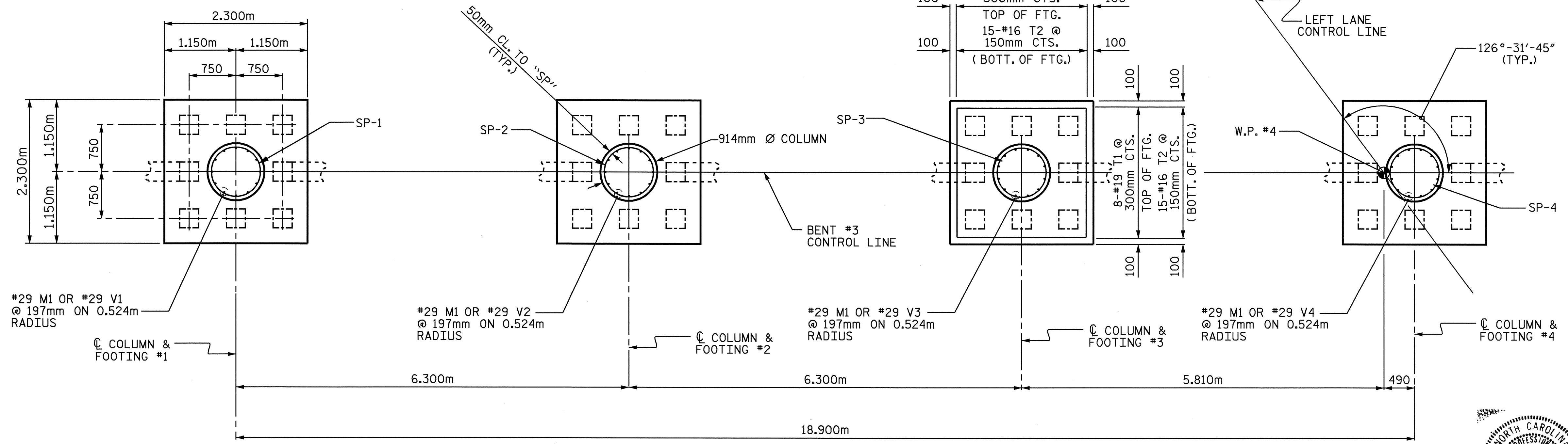
SPIRAL REINFORCING STEEL (kg)					
SP-1	1	**	4	186060	185
SP-2	1	**	4	190460	189
SP-3	1	**	4	194820	194
SP-4	1	**	4	199200	198
TOTAL SPIRAL REINFORCING STEEL				(kg)	766

CLASS A CONCRETE BREAKDOWN (m3)		
POUR #1 (FOOTINGS)		18.8
POUR #2 (COLUMNS)		14.3
POUR #3 (BENT CAP)		31.7
TOTAL		64.8

305mm P/S CONCRETE PILES			
NO.	32	METERS	352

NOTE: CONCRETE DISPLACED BY CONCRETE PILES HAS BEEN DEDUCTED FROM THE TOTAL CONCRETE QUANTITY.

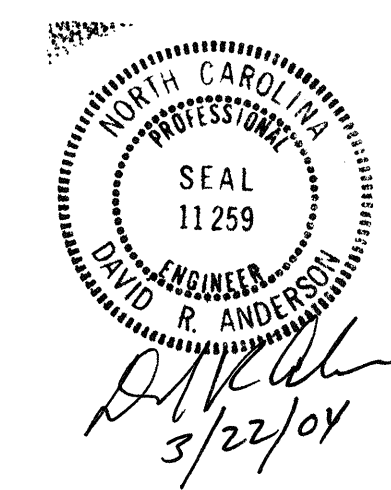
* THE "SP" SPIRAL REINFORCING STEEL SHALL BE W20 OR D20 COLD DRAWN WIRE OR #13 PLAIN OR DEFORMED BAR.



PLAN OF FOOTINGS

(INFORMATION IS TYPICAL IN FOOTING)

PROJECT NO. R-513C
ROBESON COUNTY
 STATION: 277+68.339 -L-
 SHEET 2 OF 2



STATE OF NORTH CAROLINA
 DEPARTMENT OF TRANSPORTATION
 RALEIGH

SUBSTRUCTURE
 BENT#3

REVISIONS					
NO.	BY:	DATE:	NO.	BY:	DATE:
1			3		
2			4		

SHEET NO.	
5-159	TOTAL SHEETS
	312

DRAWN BY: S. M. RASHIDI DATE: 5/03/02
 CHECKED BY: N. TRAN DATE: 11/21/02