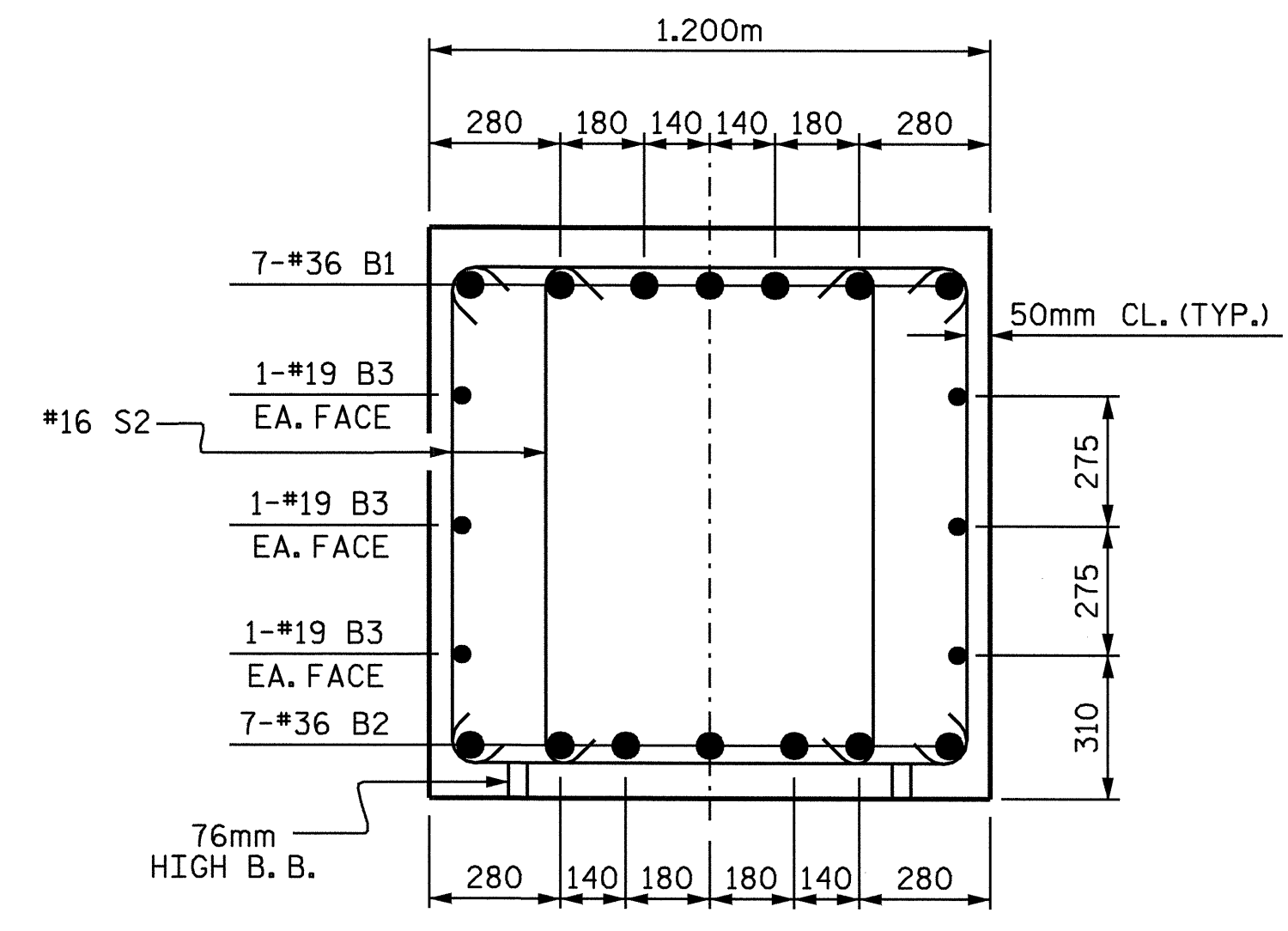
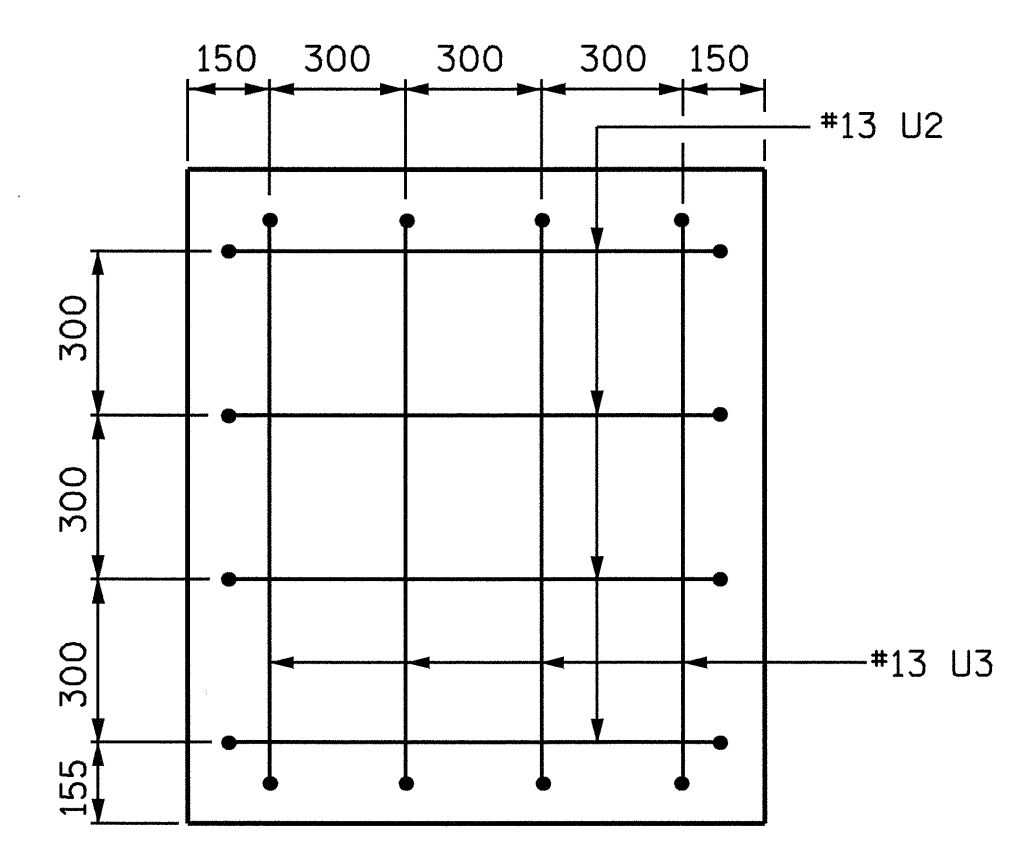


SECTION A-A



SECTION B-B



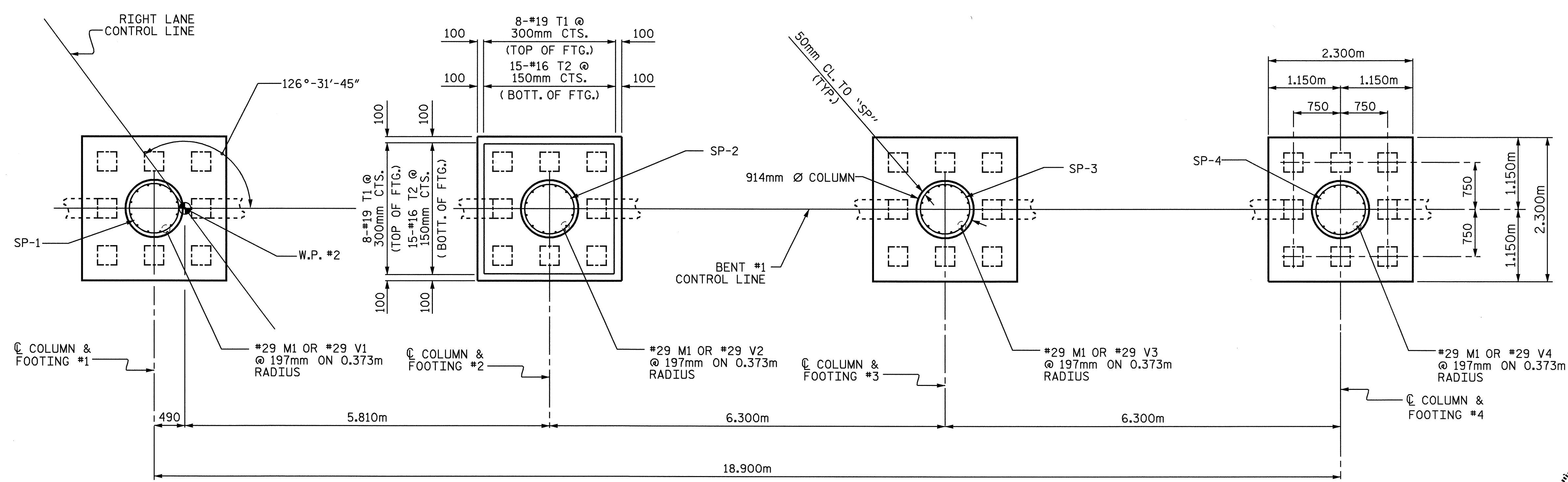
SECTION X-X

BAR TYPES				
HK.	1			
475	13005	B1		
375	2105	M1		
375	6845	V1 -COL. 1		
375	6725	V2 -COL. 2		
375	6585	V3 -COL. 3		
375	6465	V4 -COL. 4		

BILL OF MATERIAL					
BENT 1					
BAR	NO.	SIZE	TYPE	LENGTH	WEIGHT
B1	14	36	1	13480	1492
B2	14	36	STR	12880	1426
B3	12	19	STR	11380	305
M1	48	29	1	2480	602
S1	63	16	2	3540	346
S2	60	16	2	3360	313
T1	48	19	STR	2140	230
T2	90	16	STR	2140	299
U1	54	13	3	2020	108
U2	8	13	3	1960	16
U3	8	13	3	1940	15
V1	12	29	1	7220	438
V2	12	29	1	7100	431
V3	12	29	1	6960	423
V4	12	29	1	6840	415
TOTAL REINFORCING STEEL				(kg)	6859
SPIRAL REINFORCING STEEL (kg)					
SP-1	1	**	4	217760	216
SP-2	1	**	4	213320	212
SP-3	1	**	4	208920	208
SP-4	1	**	4	204560	203
TOTAL SPIRAL REINFORCING STEEL				(kg)	839
CLASS A CONCRETE BREAKDOWN (m3)					
POUR #1 (FOOTINGS)					18.8
POUR #2 (COLUMNS)					15.7
POUR #3 (BENT CAP)					31.7
TOTAL					66.2
305mm P/S CONCRETE PILES					
NO.	32			METERS	368

NOTE: CONCRETE DISPLACED BY CONCRETE PILES HAS BEEN DEDUCTED FROM THE TOTAL CONCRETE QUANTITY.

* THE "SP" SPIRAL REINFORCING STEEL SHALL BE W20 OR D20 COLD DRAWN WIRE OR #13 PLAIN OR DEFORMED BAR.



PLAN OF FOOTINGS

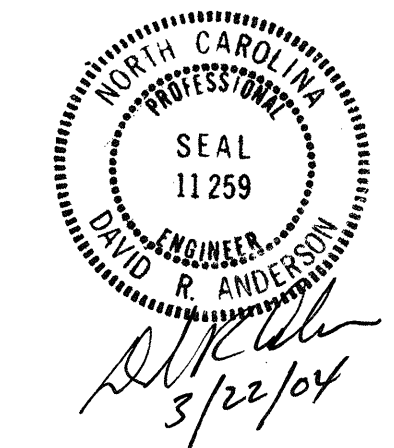
(INFORMATION IS TYPICAL IN FOOTING)

PROJECT NO. R-513C
ROBESON COUNTY
 STATION: 277+68.339 -L-

SHEET 2 OF 2

STATE OF NORTH CAROLINA DEPARTMENT OF TRANSPORTATION RALEIGH					
SUBSTRUCTURE BENT #1					
REVISIONS					
NO.	BY:	DATE:	NO.	BY:	DATE:
1			3		
2			4		

SHEET NO. S-195
TOTAL SHEETS 312



DRAWN BY: S. M. RASHIDI DATE: 5/03/02
 CHECKED BY: N. IRAN DATE: 2/06/03