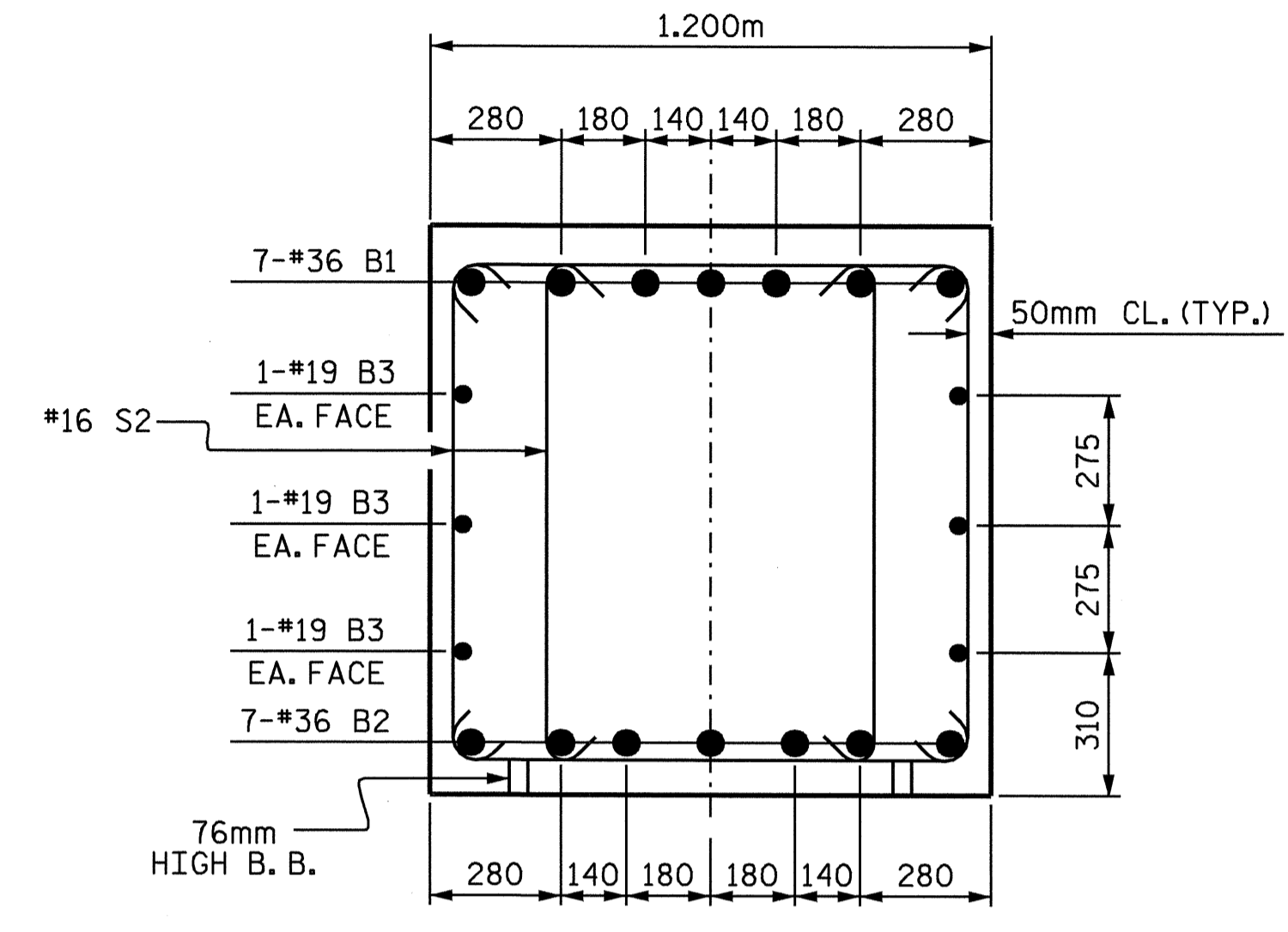
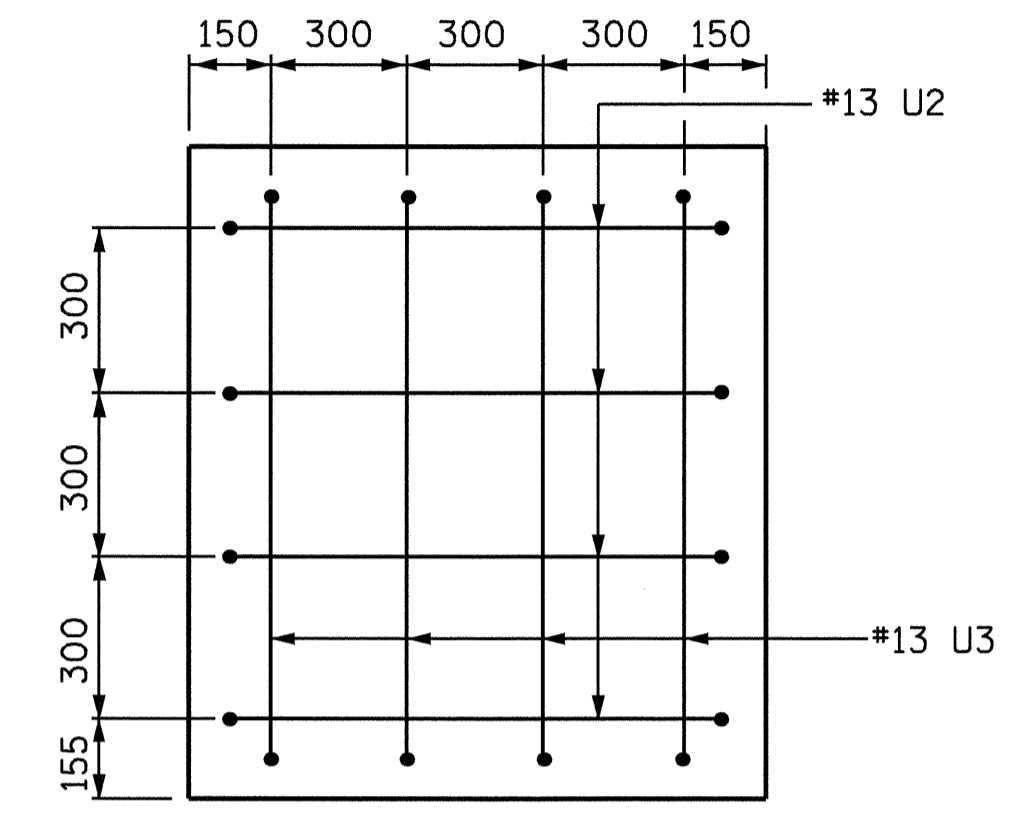


SECTION A-A



SECTION B-B



SECTION X-X

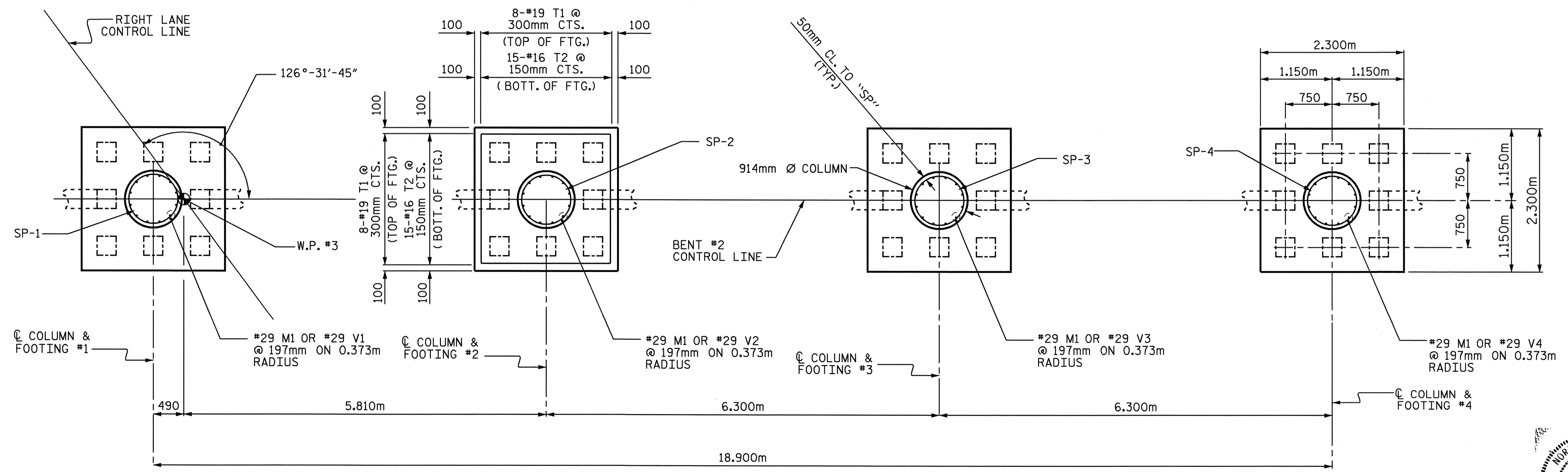
BAR TYPES

BILL OF MATERIAL					
BENT 2					
BAR NO.	SIZE	TYPE	LENGTH	WEIGHT	
B1	14	36	1	13480	1492
B2	14	36	STR	12880	1426
B3	12	19	STR	11380	305
M1	48	29	1	2480	602
S1	63	16	2	3540	346
S2	60	16	2	3360	313
T1	48	19	STR	2140	230
T2	90	16	STR	2140	299
U1	54	13	3	2020	108
U2	8	13	3	1960	16
U3	8	13	3	1940	15
V1	12	29	1	6940	421
V2	12	29	1	6820	414
V3	12	29	1	6680	406
V4	12	29	1	6540	397
TOTAL REINFORCING STEEL				(kg)	6790
SPIRAL REINFORCING STEEL (kg)					
SP-1	1	**	4	207920	207
SP-2	1	**	4	203760	203
SP-3	1	**	4	199640	198
SP-4	1	**	4	194420	193
TOTAL SPIRAL REINFORCING STEEL				(kg)	801
CLASS A CONCRETE BREAKDOWN (m ³)					
POUR #1 (FOOTINGS)					18.8
POUR #2 (COLUMNS)					15.0
POUR #3 (BENT CAP)					31.7
TOTAL					65.5
305mm P/S CONCRETE PILES					
NO.	32		METERS		368

NOTE: CONCRETE DISPLACED BY CONCRETE PILES HAS BEEN DEDUCTED FROM THE TOTAL CONCRETE QUANTITY.

ALL BAR DIMENSIONS ARE OUT TO OUT.

* THE "SP" SPIRAL REINFORCING STEEL SHALL BE W20 OR D20 COLD DRAWN WIRE OR #13 PLAIN OR DEFORMED BAR.



PLAN OF FOOTINGS

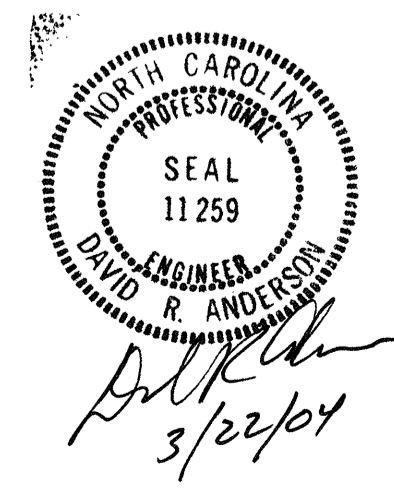
(INFORMATION IS TYPICAL IN FOOTING)

PROJECT NO. R-513C
ROBESON COUNTY
 STATION: 277+68.339 -L-

SHEET 2 OF 2

STATE OF NORTH CAROLINA
 DEPARTMENT OF TRANSPORTATION
 RALEIGH

SUBSTRUCTURE
 BENT #2



DRAWN BY: S. M. RASHIDI DATE: 5/03/02
 CHECKED BY: N. IRAN DATE: 2/06/03

REVISIONS						SHEET NO.	
NO.	BY:	DATE:	NO.	BY:	DATE:	SHEETS	
1			3			1	312
2			4			2	