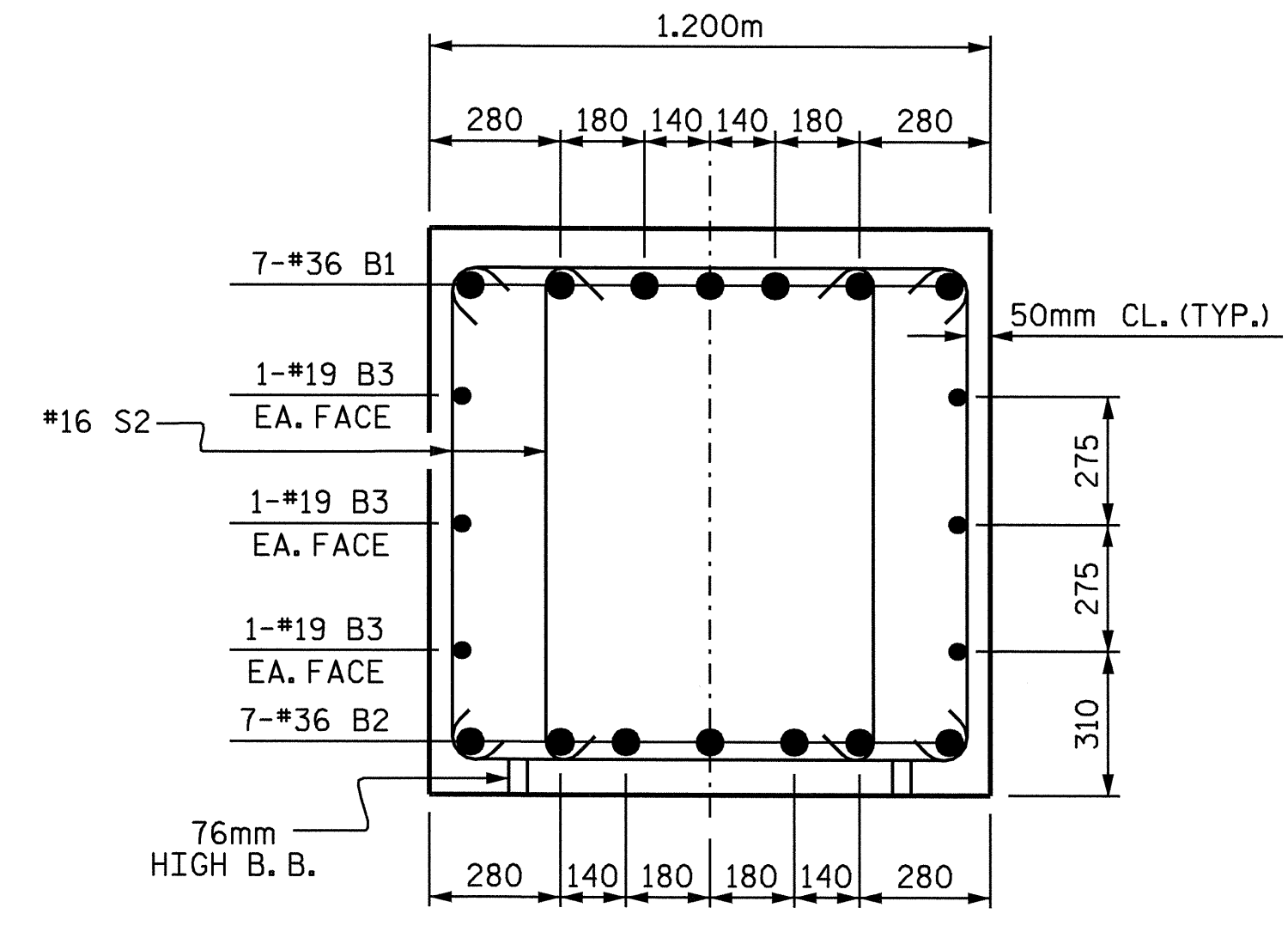
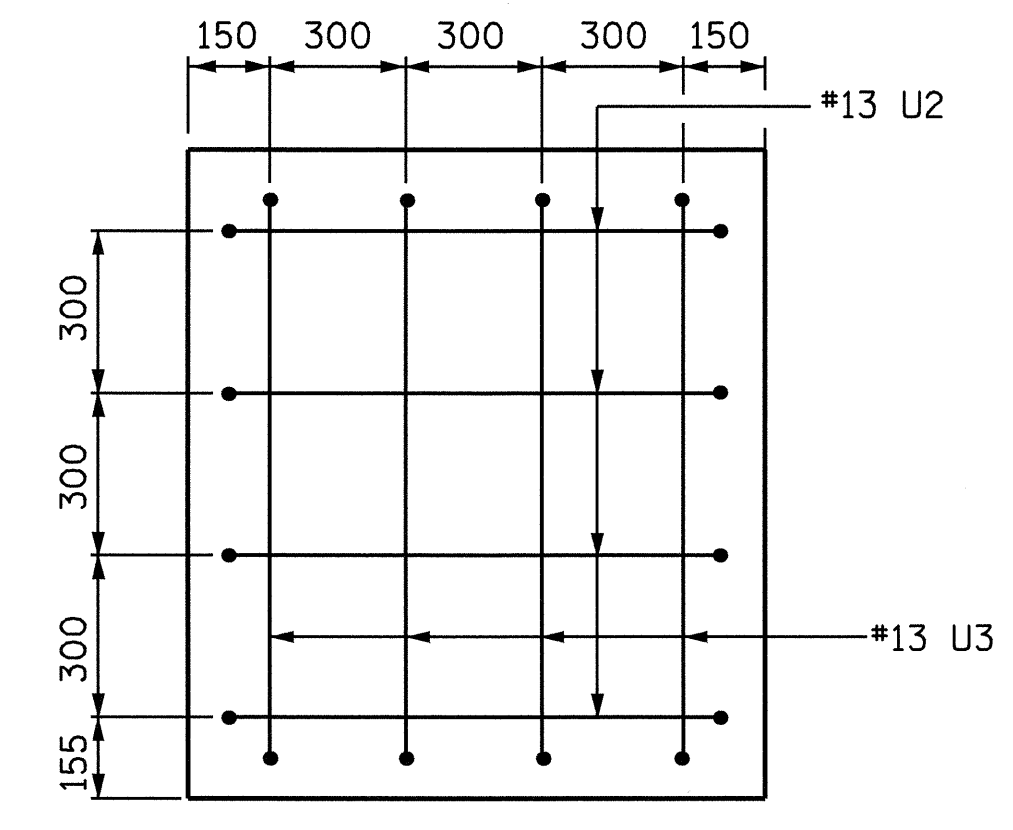


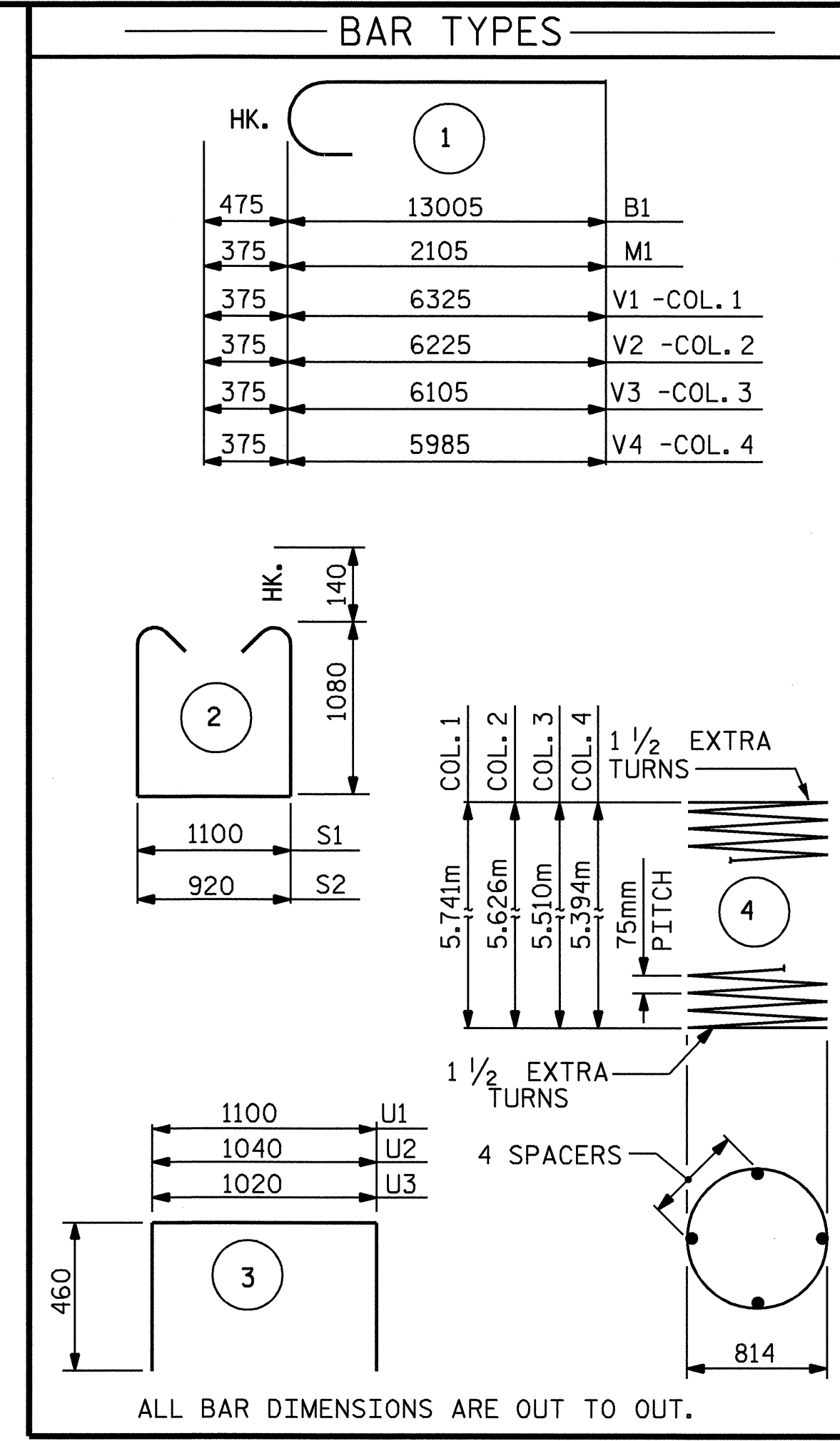
SECTION A-A



SECTION B-B



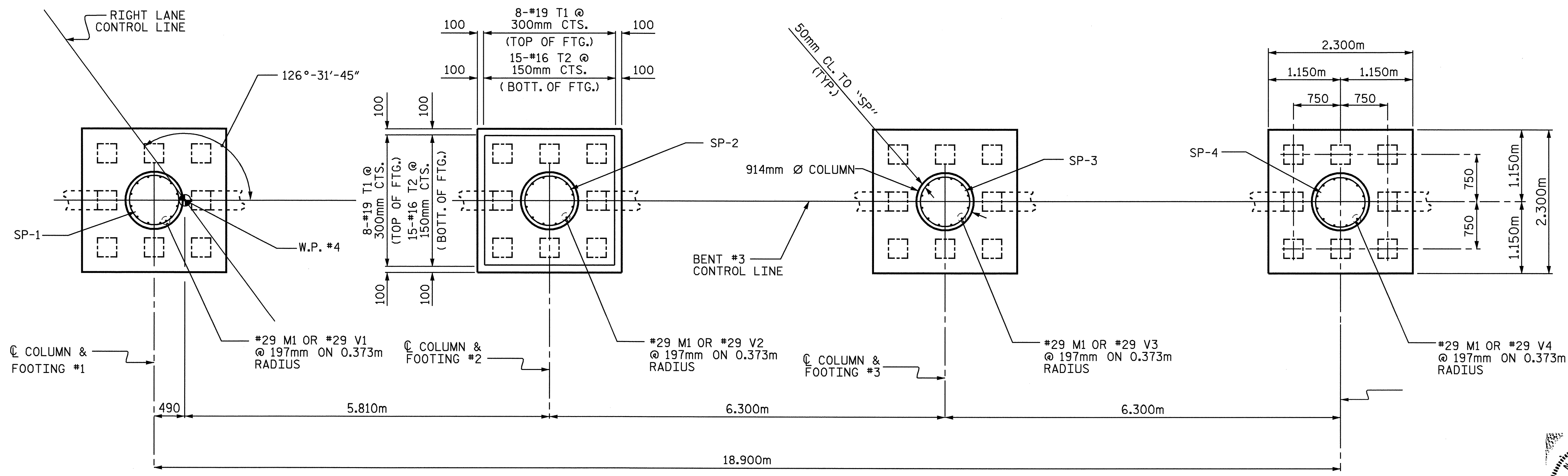
SECTION X-X



BILL OF MATERIAL					
BENT 3					
BAR NO.	SIZE	TYPE	LENGTH	WEIGHT	
B1	14	36	1	13480	1492
B2	14	36	STR	12880	1426
B3	12	19	STR	11380	305
M1	48	29	1	2480	602
S1	63	16	2	3540	346
S2	60	16	2	3360	313
T1	48	19	STR	2140	230
T2	90	16	STR	2140	299
U1	54	13	3	2020	108
U2	8	13	3	1960	16
U3	8	13	3	1940	15
V1	12	29	1	6700	406
V2	12	29	1	6600	400
V3	12	29	1	6480	393
V4	12	29	1	6360	386
TOTAL REINFORCING STEEL				(kg)	6737
SPIRAL REINFORCING STEEL (kg)					
SP-1	1	**	4	200260	199
SP-2	1	**	4	196400	195
SP-3	1	**	4	192520	191
SP-4	1	**	4	188620	187
TOTAL SPIRAL REINFORCING STEEL				(kg)	772
CLASS A CONCRETE BREAKDOWN (m3)					
POUR #1 (FOOTINGS)					19.5
POUR #2 (COLUMNS)					14.4
POUR #3 (BENT CAP)					31.7
TOTAL					65.6
305mm P/S CONCRETE PILES					
NO.	32		METERS		400
NOTE: CONCRETE DISPLACED BY CONCRETE PILES HAS BEEN DEDUCTED FROM THE TOTAL CONCRETE QUANTITY.					

ALL BAR DIMENSIONS ARE OUT TO OUT.

THE "SP" SPIRAL REINFORCING STEEL SHALL BE W20 OR D20 COLD DRAWN WIRE OR #13 PLAIN OR DEFORMED BAR.



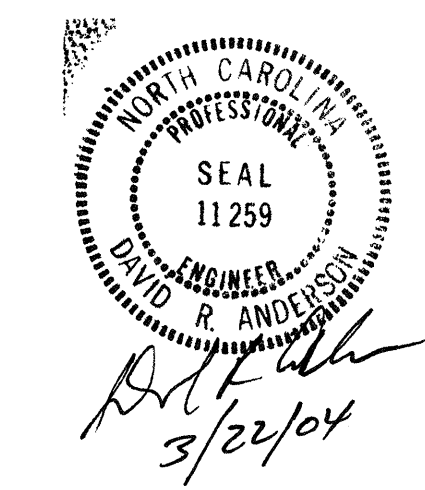
PLAN OF FOOTINGS

(INFORMATION IS TYPICAL IN FOOTING)

PROJECT NO. R-513C
ROBESON COUNTY
 STATION: 277+68.339 -L-

SHEET 2 OF 2

STATE OF NORTH CAROLINA DEPARTMENT OF TRANSPORTATION RALEIGH					
SUBSTRUCTURE BENT #3					
REVISIONS					
NO.	BY:	DATE:	NO.	BY:	DATE:
1			3		
2			4		



DRAWN BY: S. M. RASHIDI DATE: 5/03/02
 CHECKED BY: N. TRAN DATE: 2/06/03

SHEET NO.
S-199
 TOTAL SHEETS
312