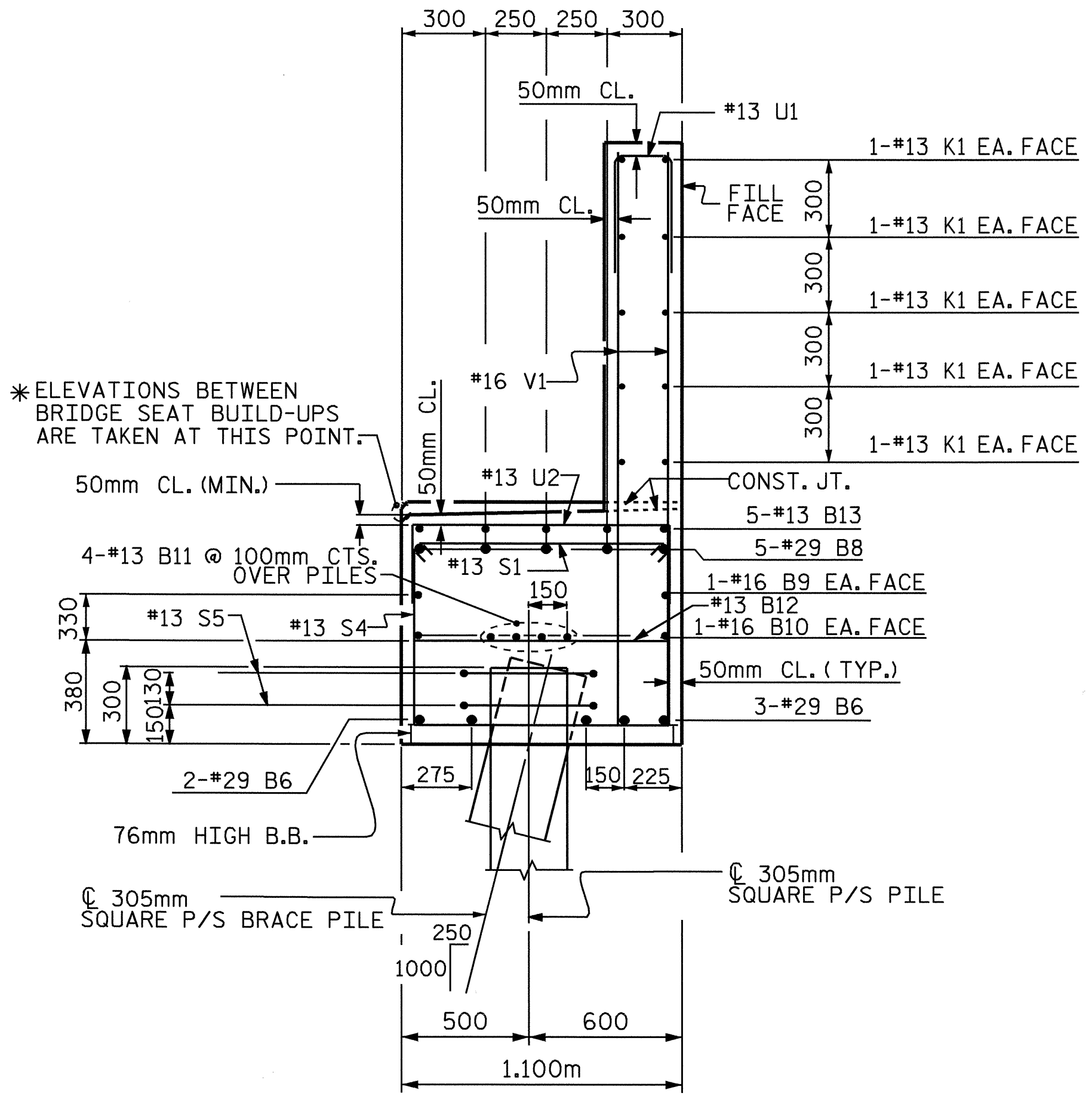


SECTION A-A



SECTION B-B

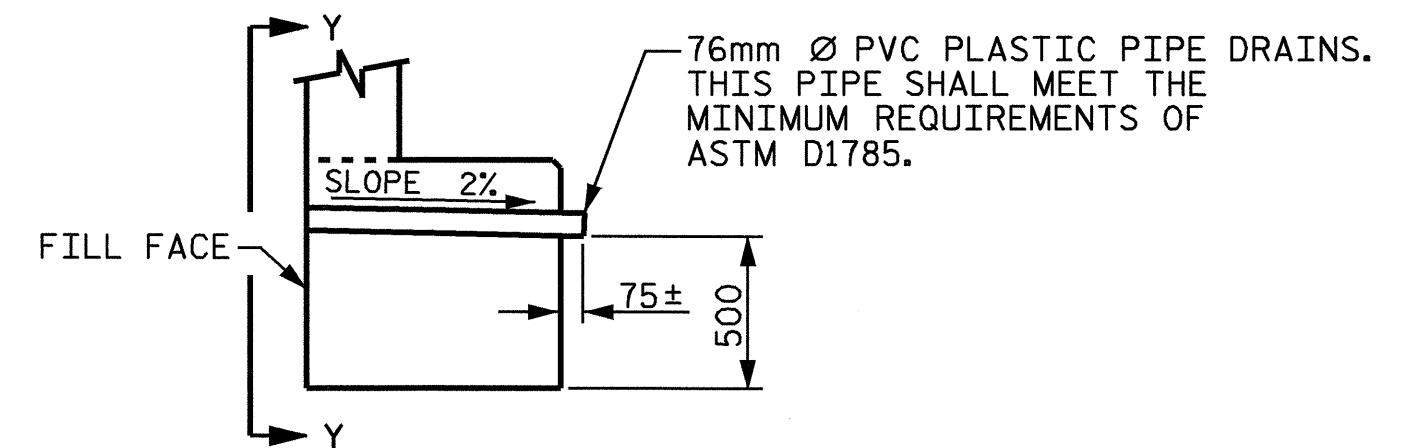
* ELEVATIONS BETWEEN BRIDGE SEAT BUILD-UPS ARE TAKEN AT THIS POINT.

* ELEVATIONS BETWEEN BRIDGE SEAT BUILD-UPS ARE TAKEN AT THIS POINT.

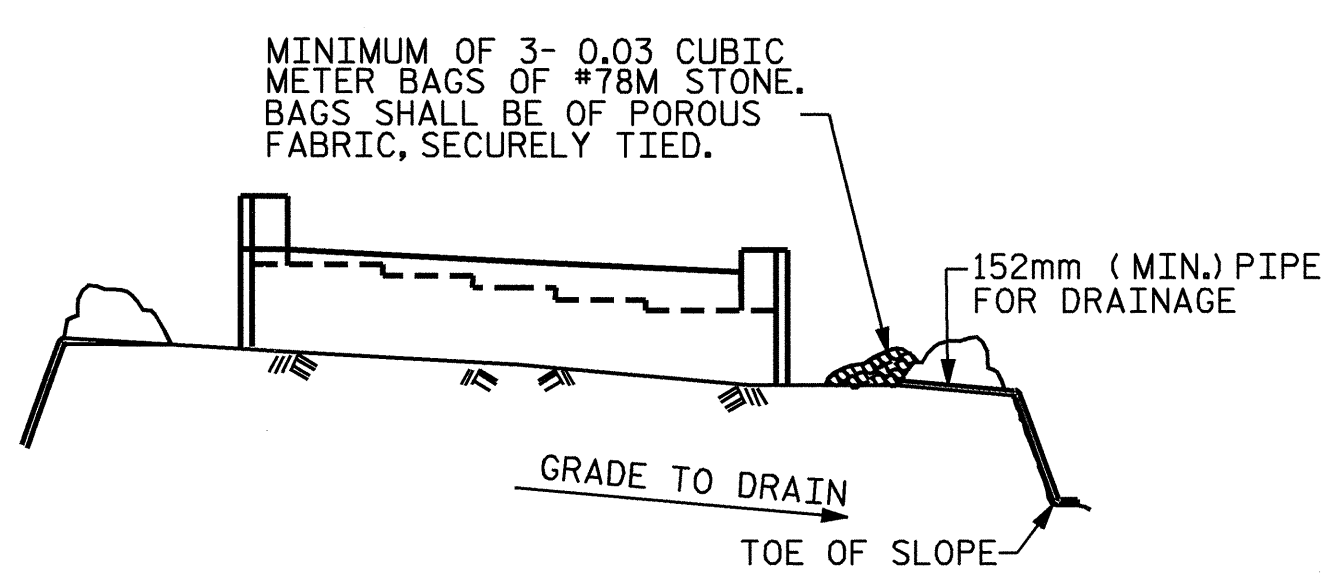
BAR TYPES

ALL BAR DIMENSIONS ARE OUT TO OUT

BILL OF MATERIAL						
END BENT 2						
BAR	NO.	SIZE	TYPE	LENGTH	WEIGHT	
B1	1	29	1	8020	41	
B2	1	29	1	7920	40	
B3	1	29	1	7800	39	
B4	1	29	1	7480	38	
B5	1	29	1	7320	37	
B6	10	29	1	14280	723	
B7	5	29	1	13660	346	
B8	5	29	STR	11040	279	
B9	2	16	STR	14380	45	
B10	4	16	STR	13440	83	
B11	16	13	STR	7040	112	
B12	27	13	STR	1000	27	
B13	15	13	STR	1100	16	
H1	11	16	5	3680	63	
H2	11	16	5	3540	60	
H3	10	16	4	2800	43	
H4	10	16	4	2960	46	
J1	1	19	8	2840	6	
J2	3	19	9	1200	8	
K1	40	13	STR	7060	281	
K2	8	13	STR	1080	9	
S1	78	13	2	1220	95	
S2	30	13	3	2520	75	
S3	27	13	3	2820	76	
S4	21	13	3	3120	65	
S5	28	13	7	2000	56	
U1	79	13	6	1100	86	
U2	9	13	6	1900	17	
V1	158	16	STR	2220	544	
V2	30	16	STR	3000	140	
V3	26	16	STR	2600	105	
REINFORCING STEEL					kg	3601
CLASS A CONCRETE BREAKDOWN						
POUR 1 (CAP AND LOWER PORTION OF WINGS)					m ³	29.2
POUR 2 (BACKWALL AND UPPER PORTION OF WINGS)					m ³	16.9
TOTAL					m ³	46.1
305mm SQUARE PRESTRESSED CONCRETE PILES						
NO. 15					METERS	255.0



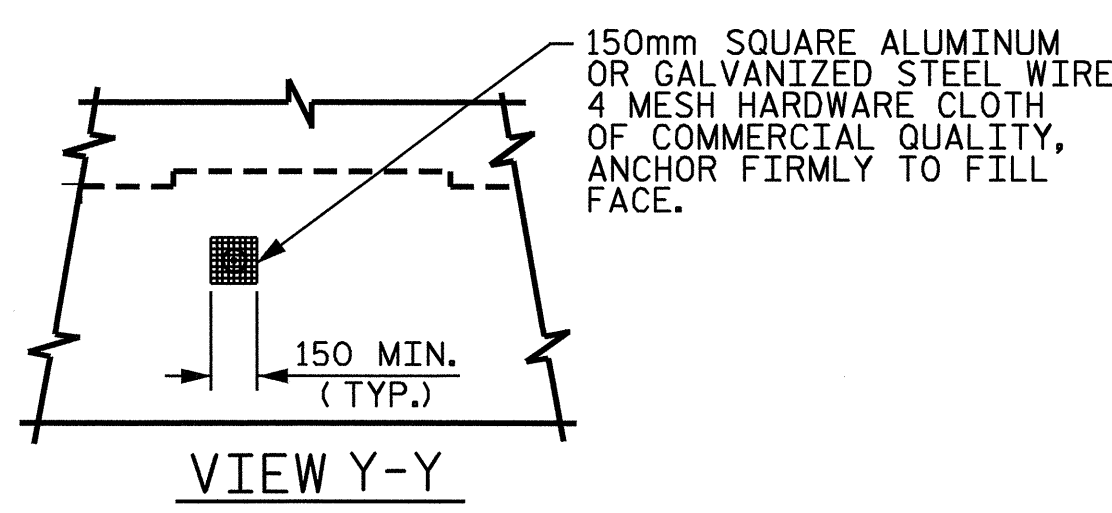
SECTION THRU CAP



BAGGED STONE AND PIPE SHALL BE PLACED IMMEDIATELY AFTER COMPLETION OF END BENT EXCAVATION. PIPE MAY BE EITHER CONCRETE, CORRUGATED STEEL, CORRUGATED ALUMINUM ALLOY, OR CORRUGATED PLASTIC. PERFORATED PIPE WILL NOT BE ALLOWED.

BAGGED STONE SHALL REMAIN IN PLACE UNTIL THE ENGINEER DIRECTS THAT IT BE REMOVED. THE CONTRACTOR SHALL REMOVE AND DISPOSE OF SILT ACCUMULATIONS AT BAGGED STONE WHEN SO DIRECTED BY THE ENGINEER. BAGS SHALL BE REMOVED AND REPLACED WHENEVER THE ENGINEER DETERMINES THAT THEY HAVE DETERIORATED AND LOST THEIR EFFECTIVENESS.

NO SEPARATE PAYMENT WILL BE MADE FOR THIS WORK AND THE ENTIRE COST OF THIS WORK SHALL BE INCLUDED IN THE UNIT CONTRACT PRICE BID FOR THE SEVERAL PAY ITEMS.



VIEW Y-Y

NOTE: NO SEPARATE PAYMENT WILL BE MADE FOR FURNISHING AND INSTALLING THE PVC PIPE DRAINS, HARDWARE CLOTH AND FASTENERS. THE ENTIRE COST OF THIS WORK SHALL BE INCLUDED IN THE UNIT CONTRACT PRICE BID FOR THE SEVERAL PAY ITEMS.

PIPE DRAIN DETAILS

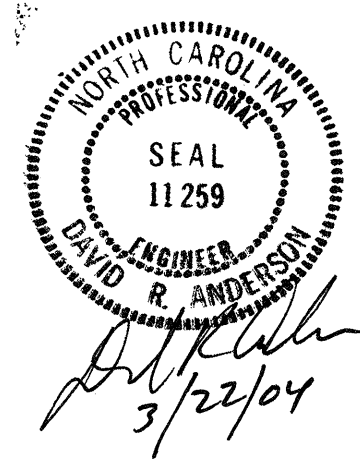
TEMPORARY DRAINAGE AT END BENT

PROJECT NO. R-513C
ROBESON COUNTY
 STATION 277+68.339 -L-

SHEET 3 OF 3

STATE OF NORTH CAROLINA
 DEPARTMENT OF TRANSPORTATION
 RALEIGH

SUBSTRUCTURE
 END BENT 2



REVISIONS						SHEET NO.
NO.	BY:	DATE:	NO.	BY:	DATE:	TOTAL SHEETS
1			3			312
2			4			

DRAWN BY: S. M. RASHIDI DATE: 9/28/01
 CHECKED BY: K. P. SEDAI DATE: 8/12/02