

**NOTES**

AT ALL FIXED POINTS OF SUPPORT, NUTS FOR ANCHOR BOLTS ARE TO BE TIGHTENED FINGER TIGHT AND THEN BACKED OFF 1/2 TURN. THE THREAD OF THE NUT AND BOLT SHALL THEN BE BURRED WITH A SHARP POINTED TOOL.

THE 51mm Ø PIPE SLEEVE SHALL BE CUT FROM SCHEDULE 40 PVC PLASTIC PIPE. THE PVC PLASTIC PIPE SHALL MEET THE REQUIREMENTS OF ASTM D1785.

THE PAYMENT FOR THE PIPE SLEEVES SHALL BE INCLUDED IN THE SEVERAL PAY ITEMS.

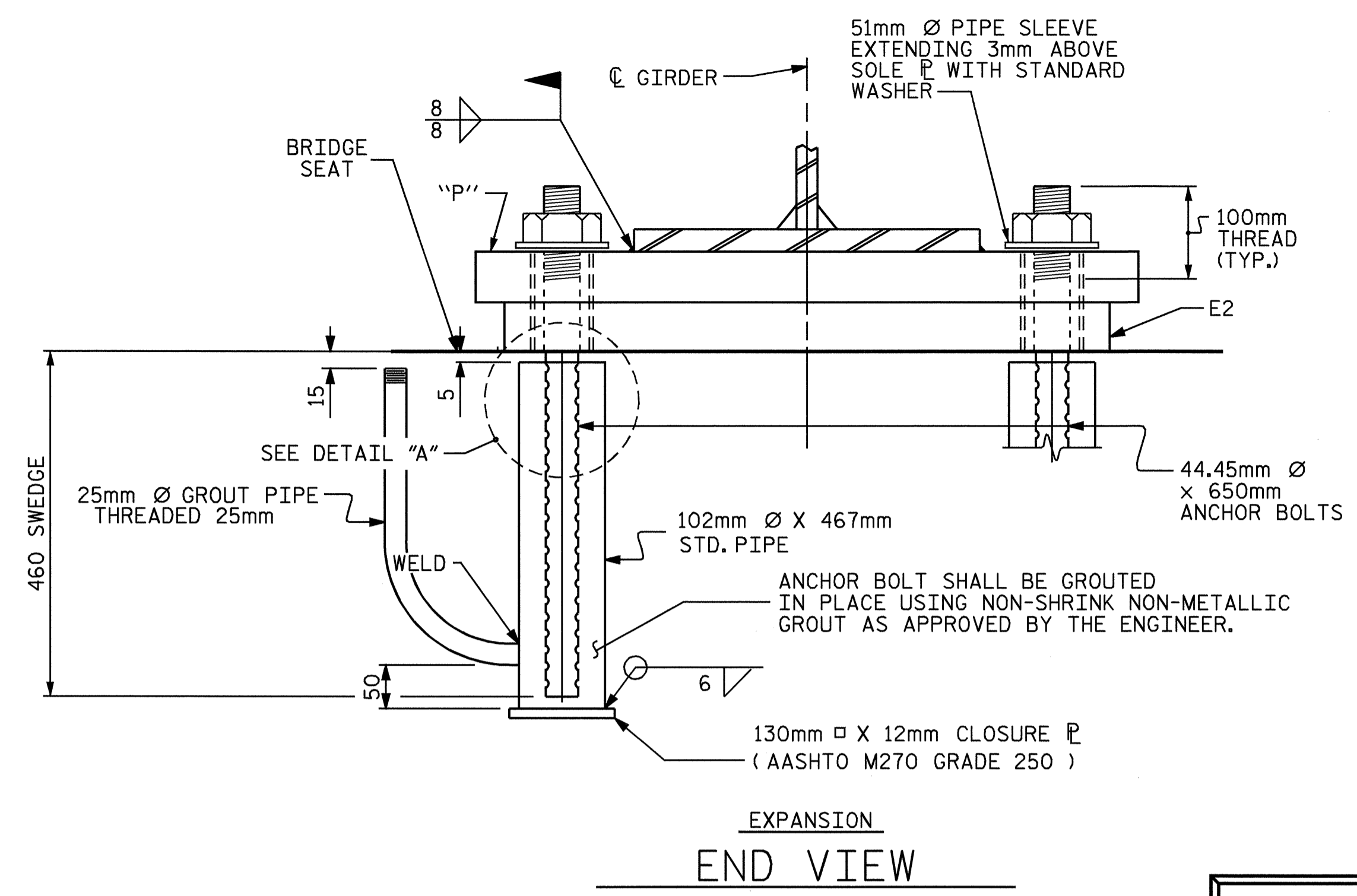
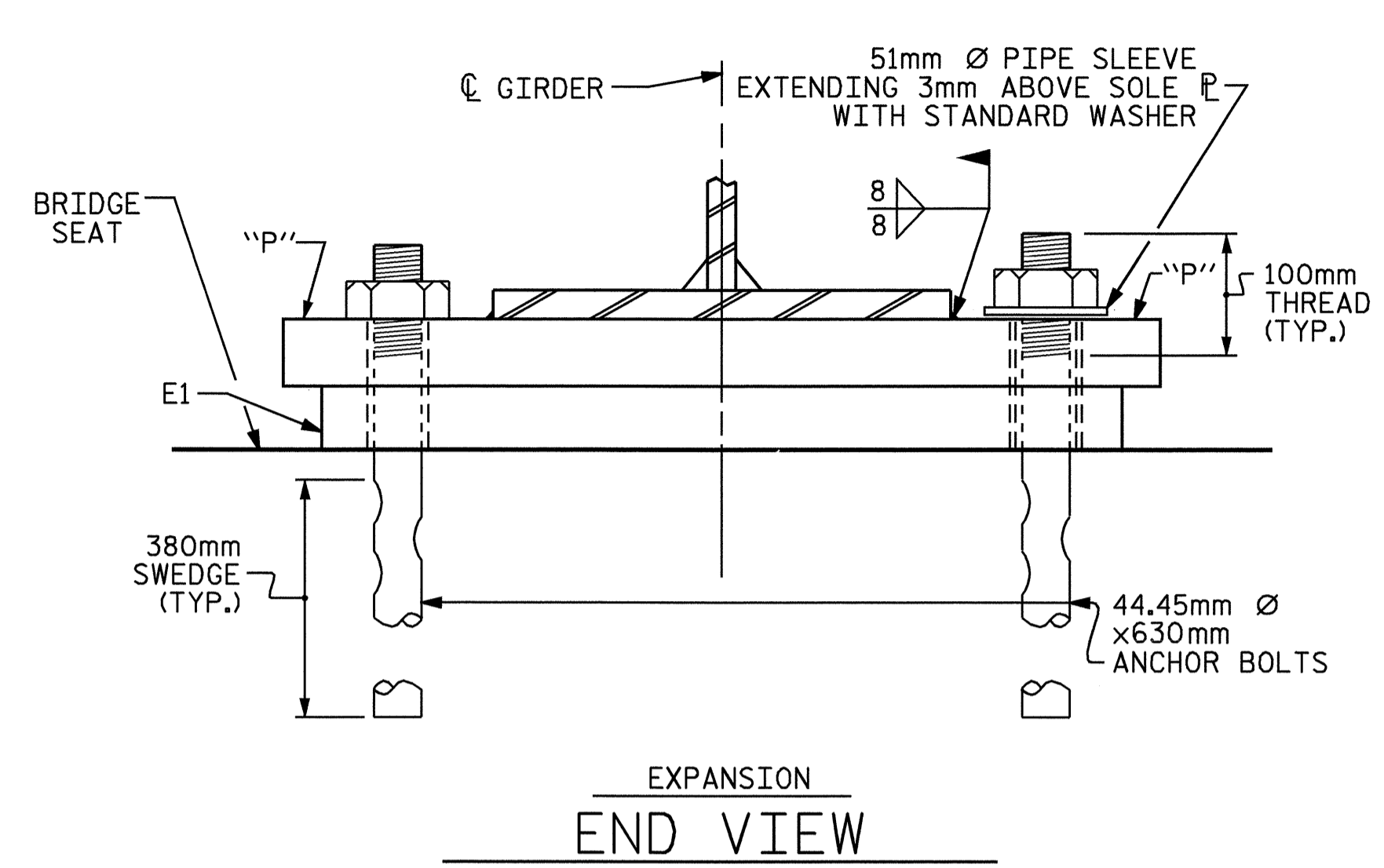
FOR AASHTO M270 GRADE 345W STRUCTURAL STEEL, SOLE PLATE SHALL BE AASHTO M270 GRADE 345W AND SHALL NOT BE GALVANIZED, ANCHOR BOLTS AND NUTS SHALL BE GALVANIZED IN ACCORDANCE WITH THE STANDARD SPECIFICATIONS.

ANCHOR BOLTS SHALL MEET THE REQUIREMENTS OF ASTM A449. NUTS SHALL MEET THE REQUIREMENTS OF AASHTO M291M-12 OR AASHTO M292M-2H. WASHERS SHALL MEET THE REQUIREMENTS OF AASHTO M293M. SHOP DRAWINGS ARE NOT REQUIRED FOR ANCHOR BOLTS, NUTS AND WASHERS. SHOP INSPECTION IS REQUIRED.

ALL SURFACES OF BEARING PLATES SHALL BE SMOOTH AND STRAIGHT.

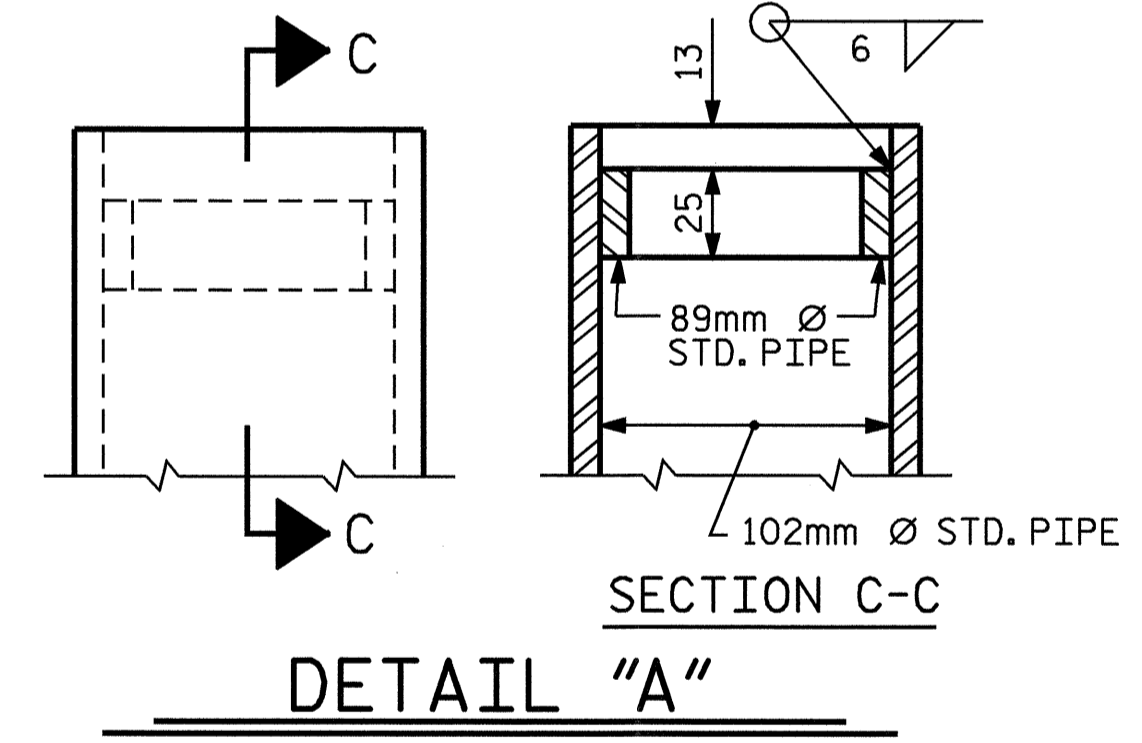
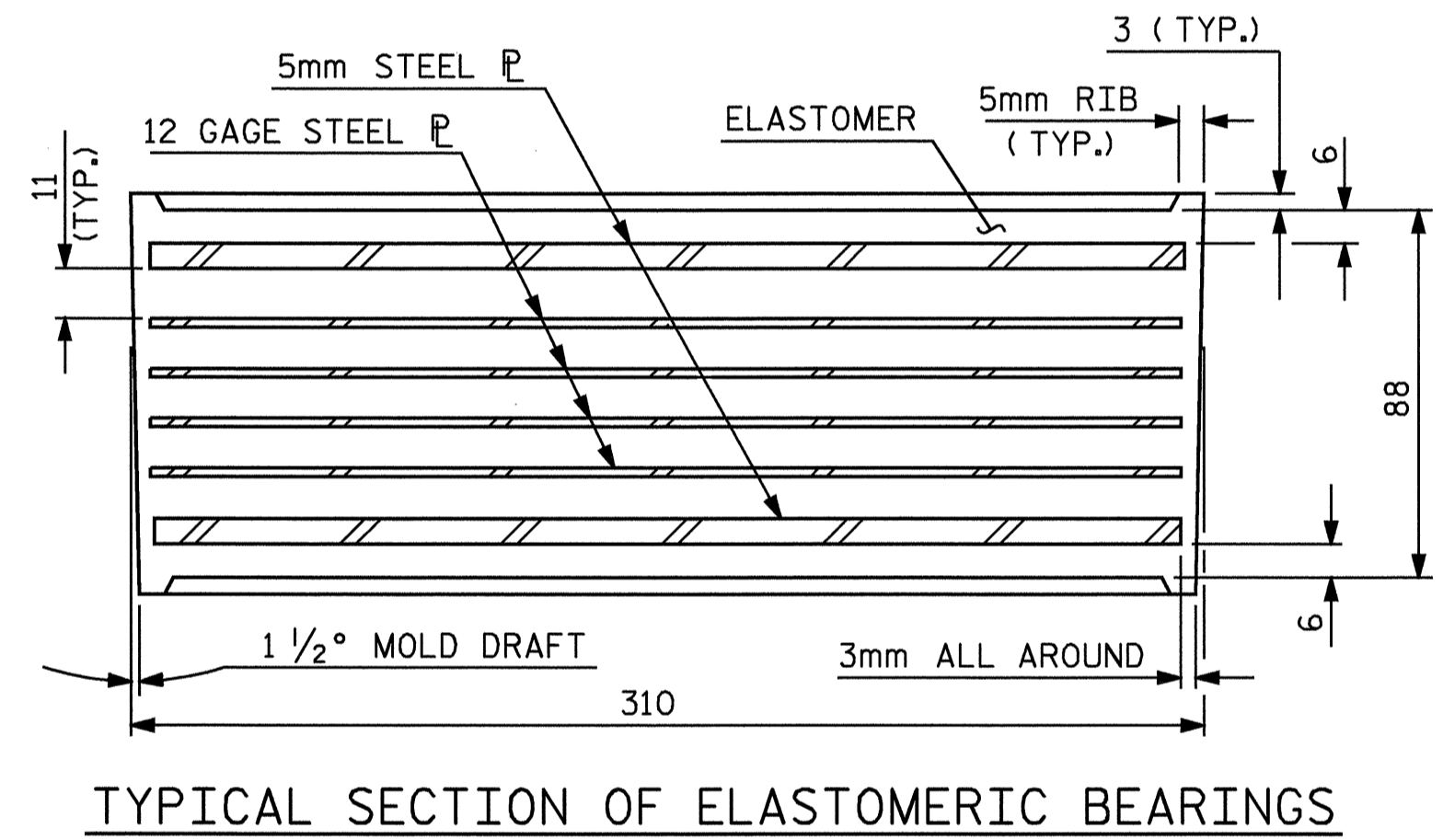
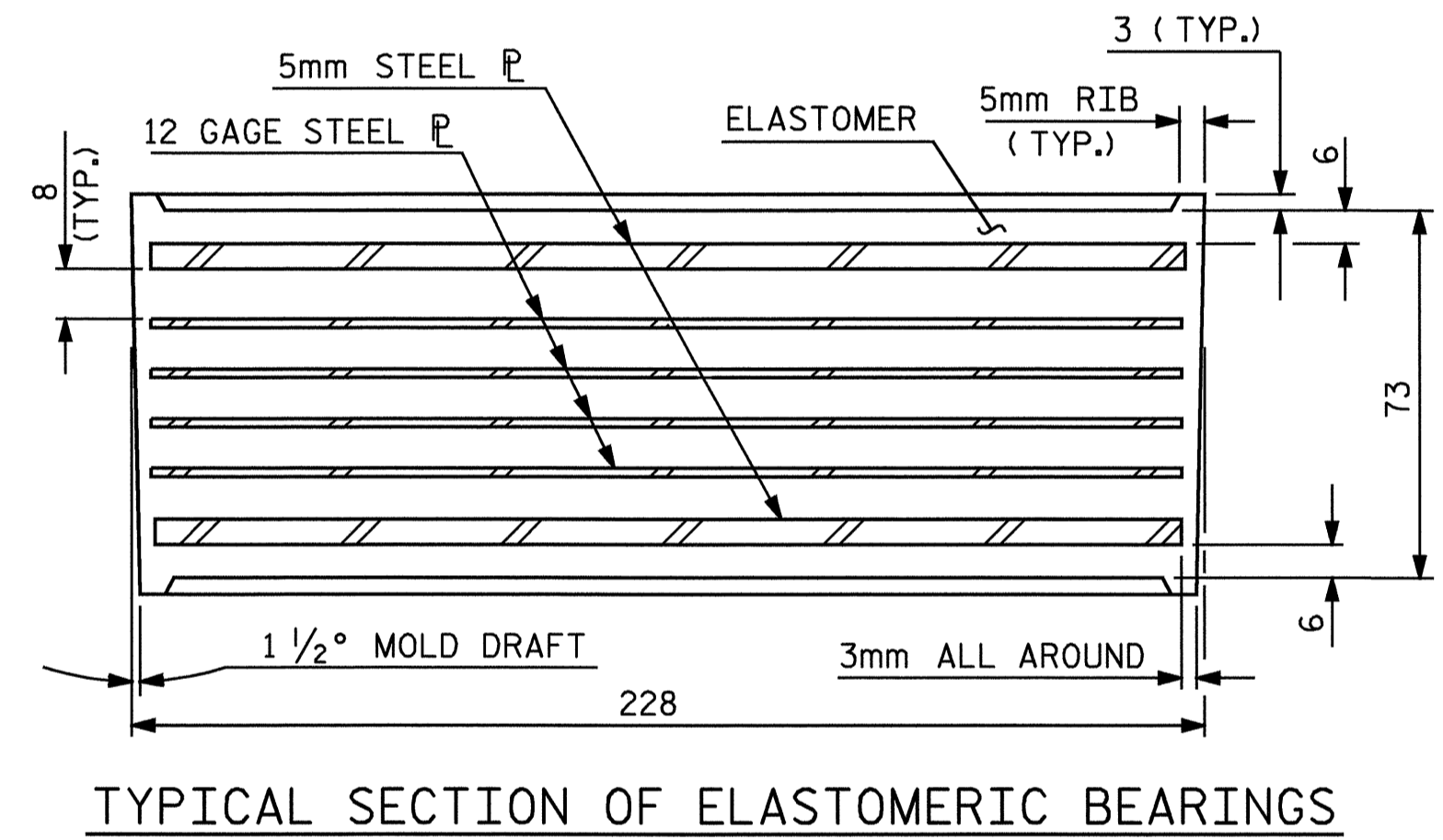
FOR ELASTOMERIC BEARINGS, SEE SPECIAL PROVISIONS.

THE CLOSURE PLATE AND STANDARD PIPE FOR EXPANSION ASSEMBLY NEED NOT BE GALVANIZED.

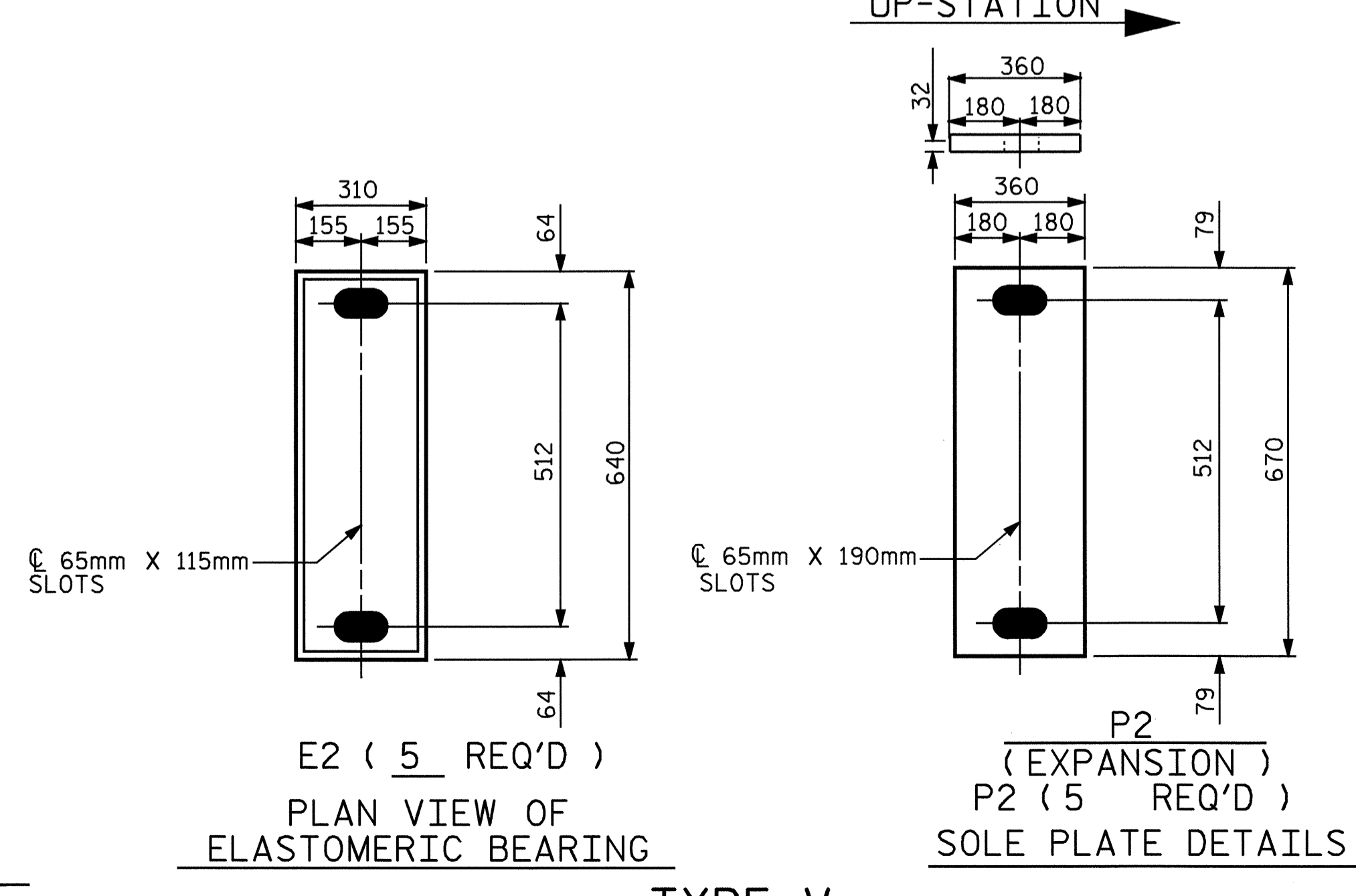
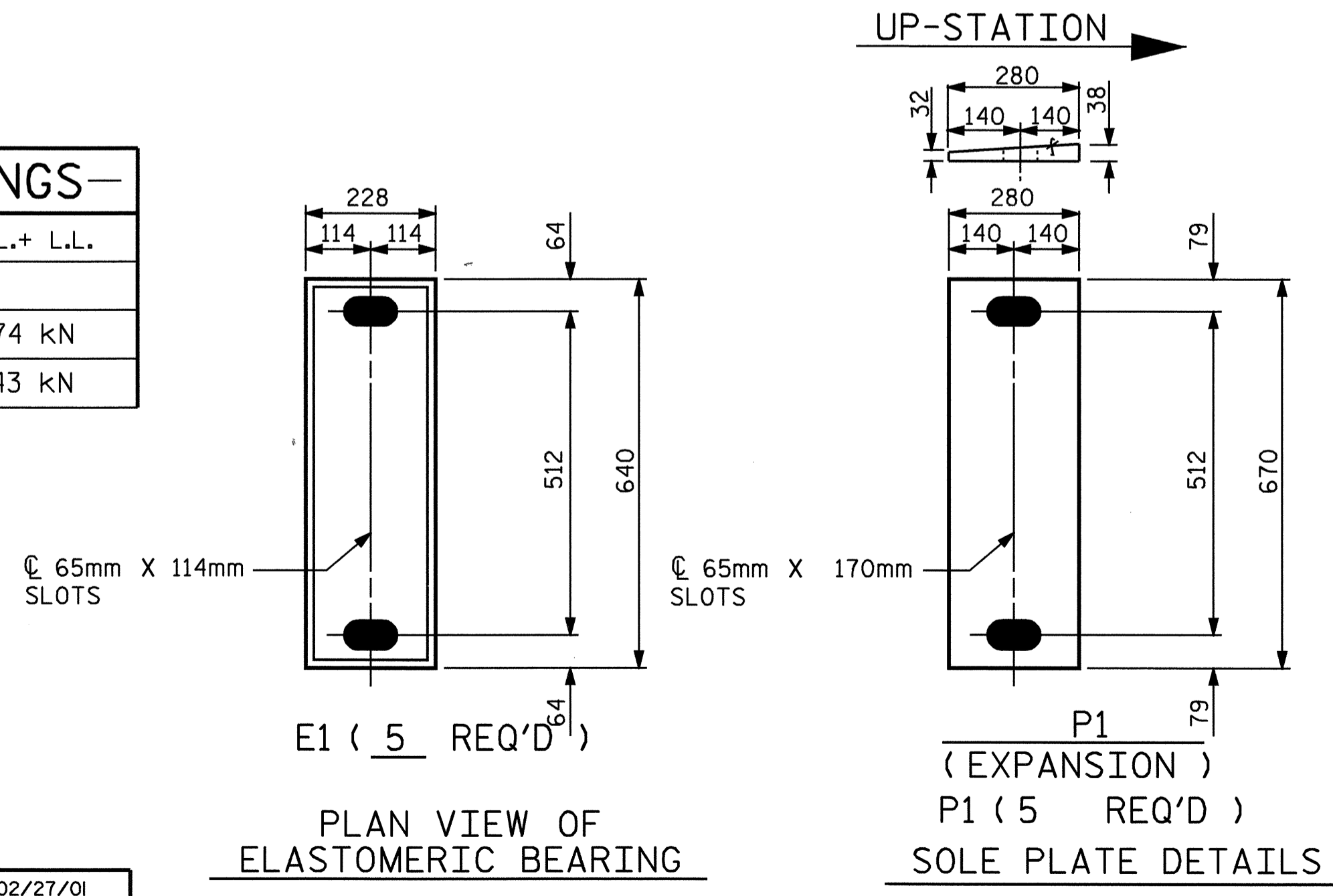


THE CONTRACTOR'S ATTENTION IS CALLED TO THE FACT THAT:

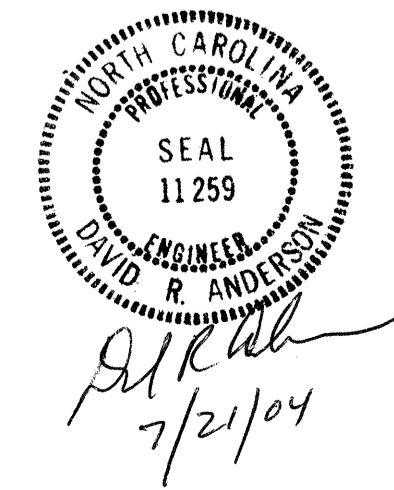
1. THE ANCHOR BOLTS SHALL BE GROUTED PRIOR TO PLACING THE FALSEWORK.
2. ONCE THE DECK HAS BEEN POURED AND HAS CURED, GIRDERS SHALL BE CENTERED ABOUT THE ANCHOR BOLTS. THIS OPERATION SHALL BE PERFORMED AT APPROXIMATELY 16° C.
3. THE SOLE PLATES SHALL BE FIELD WELDED TO THE GIRDER FLANGES.



-LOAD RATINGS-	
	MAX.D.L.+ L.L.
TYPE III	674 kN
TYPE V	943 kN



PROJECT NO. R-513C  
ROBESON COUNTY  
STATION: 17+37.086 -Y3-



STATE OF NORTH CAROLINA  
DEPARTMENT OF TRANSPORTATION  
RALEIGH

**ELASTOMERIC BEARING**  
**DETAILS**  
(STEEL SUPERSTRUCTURE)

ASSEMBLED BY : S.M. RASHIDI	DATE : 02/27/01
CHECKED BY : T.A. WALTER	DATE : 02/27/01
DRAWN BY : JMB 11/87	REV. 5/16/97 EEM/RGW
CHECKED BY : ARB 11/87	REV. 7/17/98 RWW/LES
	REV. 8/16/99 MAB/LES

REVISIONS						SHEET NO.
NO.	BY:	DATE:	NO.	BY:	DATE:	5-226
1			3			TOTAL SHEETS
2			4			312