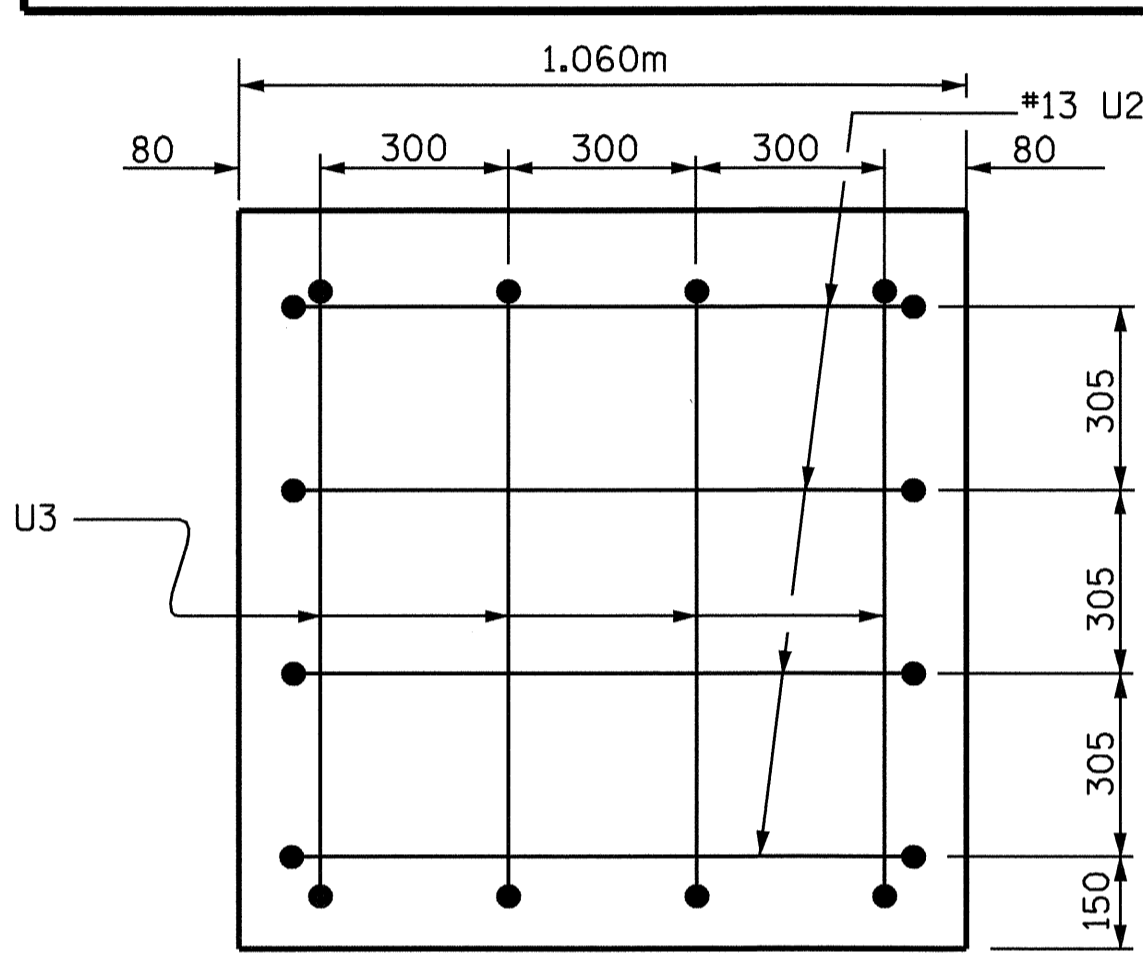
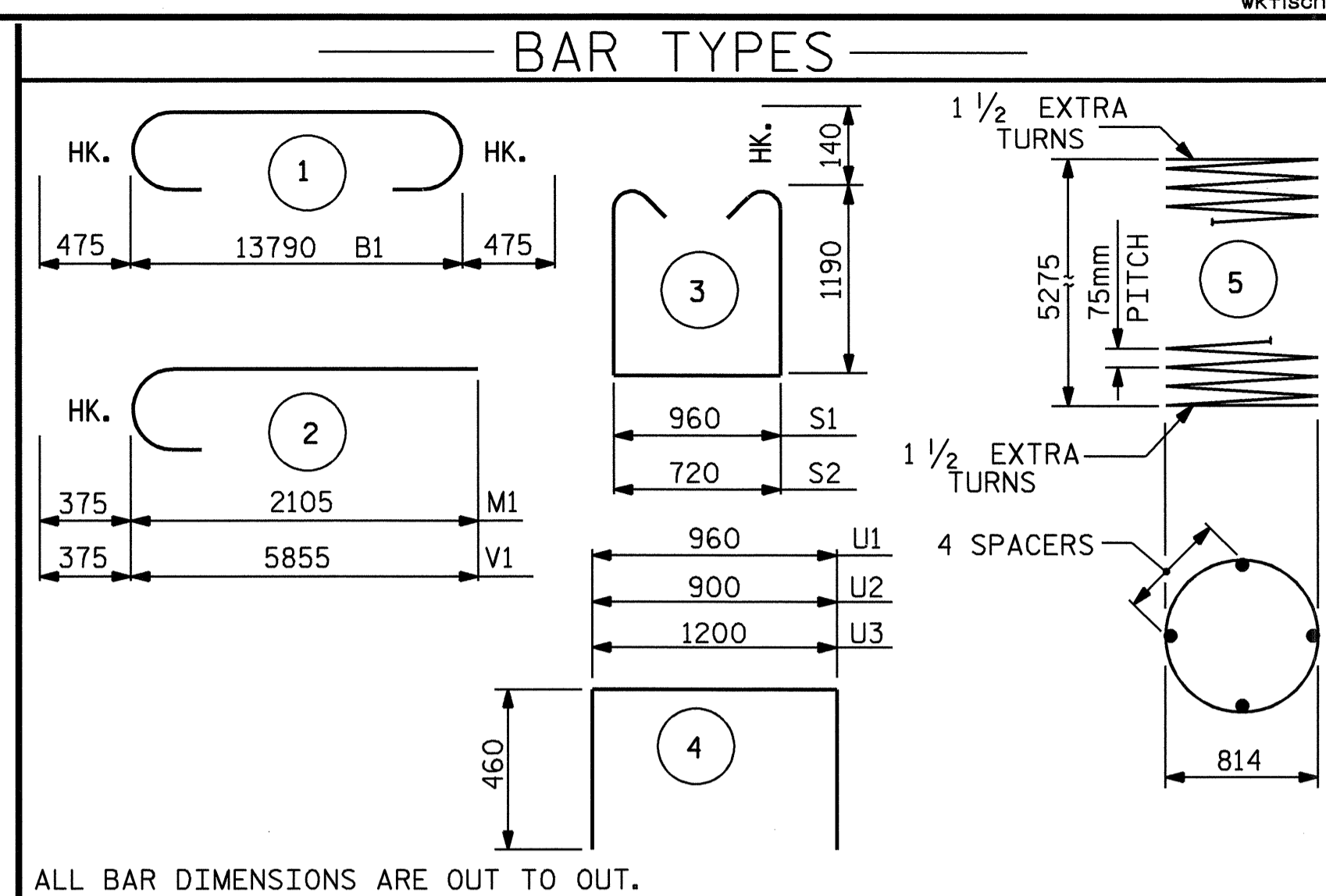


SECTION A-A

SECTION B-B

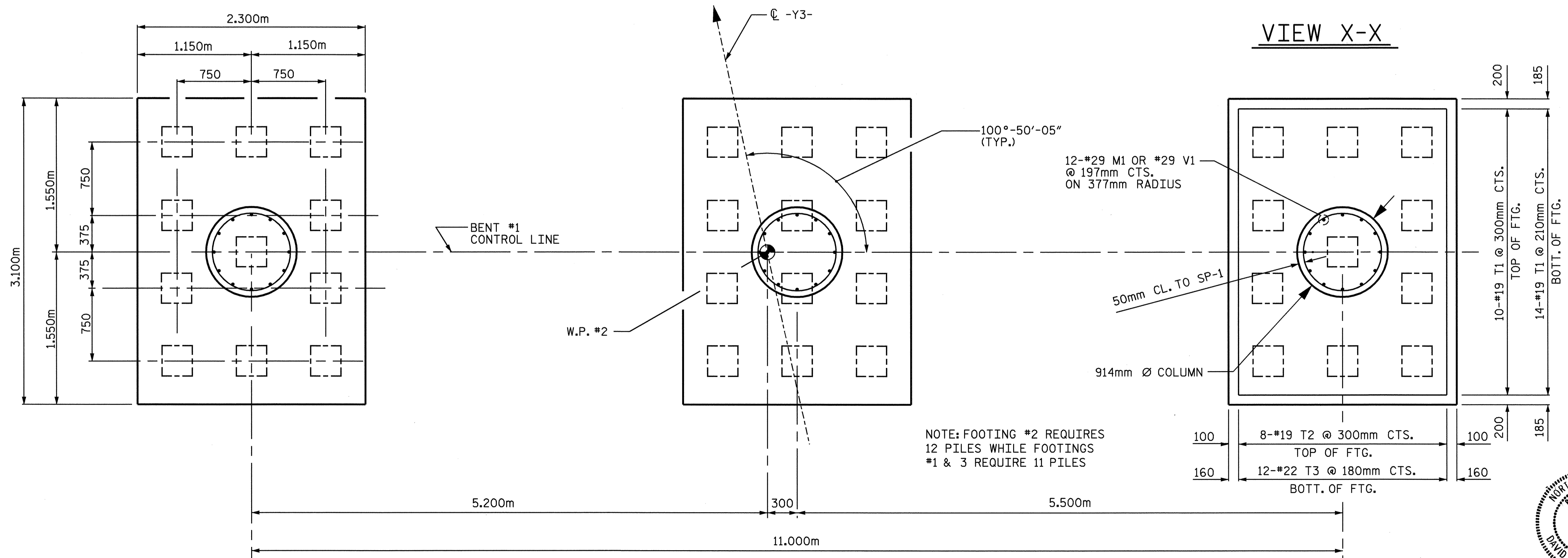
SECTION C-C



VIEW X-X

BILL OF MATERIAL					
BENT 1					
BAR NO.	SIZE	TYPE	LENGTH	WEIGHT	
B1	8	36	1	14740	932
B2	8	36	STR	13800	873
B3	4	19	STR	13800	123
B4	8	13	STR	7100	56
M1	36	29	2	2480	452
S1	67	16	3	3620	376
S2	10	16	3	3380	52
T1	72	19	STR	2200	354
T2	24	19	STR	3000	161
T3	36	22	STR	3000	329
U1	43	13	4	1880	80
U2	8	13	4	1820	14
U3	8	13	4	2120	17
V1	36	29	2	6230	1135
TOTAL REINFORCING STEEL (kg)				4954	
SPIRAL REINFORCING STEEL (kg)					
SP-1	3	**	5	184600	550
TOTAL SPIRAL REINFORCING STEEL (kg)				550	
CLASS A CONCRETE BREAKDOWN (CU. METERS)					
POUR #1 (FOOTINGS)				19.9	
POUR #2 (COLUMNS)				10.2	
POUR #3 CAP				21.4	
TOTAL				51.5	
305mm P/S CONC. PILES					
NO.	34	METERS	374		
NOTE: CONCRETE DISPLACED BY CONCRETE PILES HAS BEEN DEDUCTED FROM THE TOTAL CONCRETE QUANTITY.					

**THE SP-1 SPIRAL REINFORCING STEEL SHALL BE W20 OR D20 COLD DRAWN WIRE OR #13 PLAIN OR DEFORMED BAR.



PLAN OF FOOTINGS

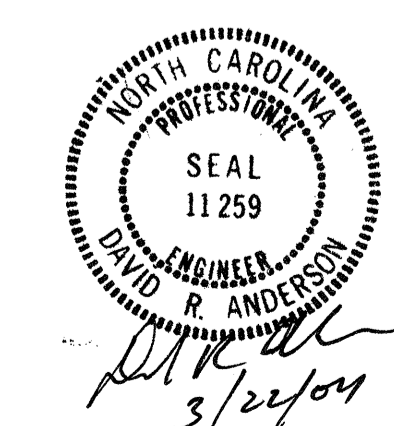
(INFORMATION GIVEN IS TYPICAL FOR EACH COLUMN AND FOOTING)

PROJECT NO. R-513C
ROBESON COUNTY
STATION: 17+37.086 -Y3-

SHEET 2 OF 3

STATE OF NORTH CAROLINA
DEPARTMENT OF TRANSPORTATION
RALEIGH

SUBSTRUCTURE
BENT #1



REVISIONS						SHEET NO.	
NO.	BY:	DATE:	NO.	BY:	DATE:	5-234	
1			3			TOTAL SHEETS	
2			4			312	

DRAWN BY: W.K. FISCHER DATE: 12/19/03
CHECKED BY: D.R. ANDERSON DATE: 1/29/04