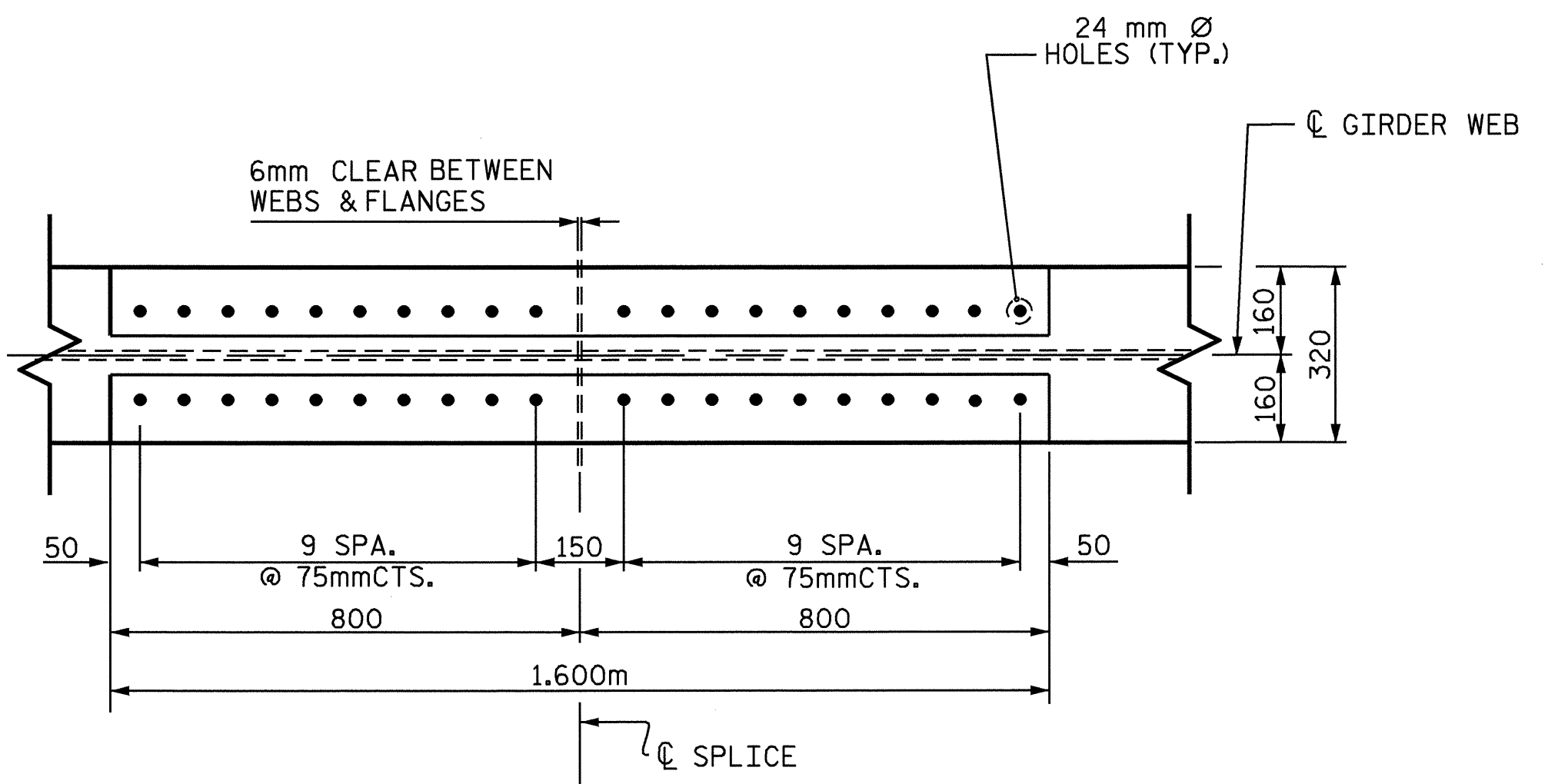


**PLAN OF TOP FLANGE**

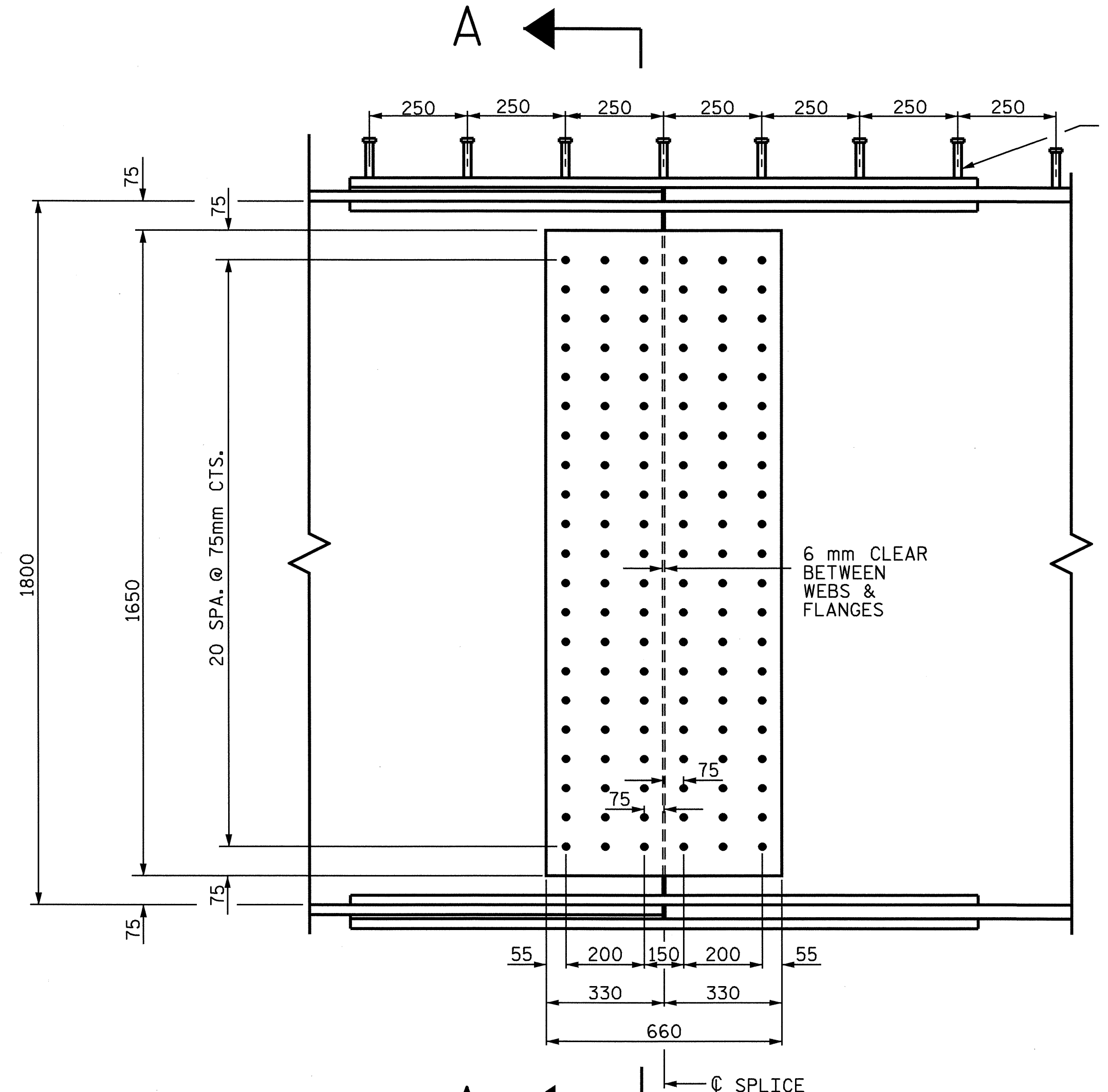
TOP OF TOP FLANGE SHOWN  
 BOTTOM PLATE FOR BOTTOM FLANGE SIMILAR EXCEPT WITHOUT SHEAR STUDS



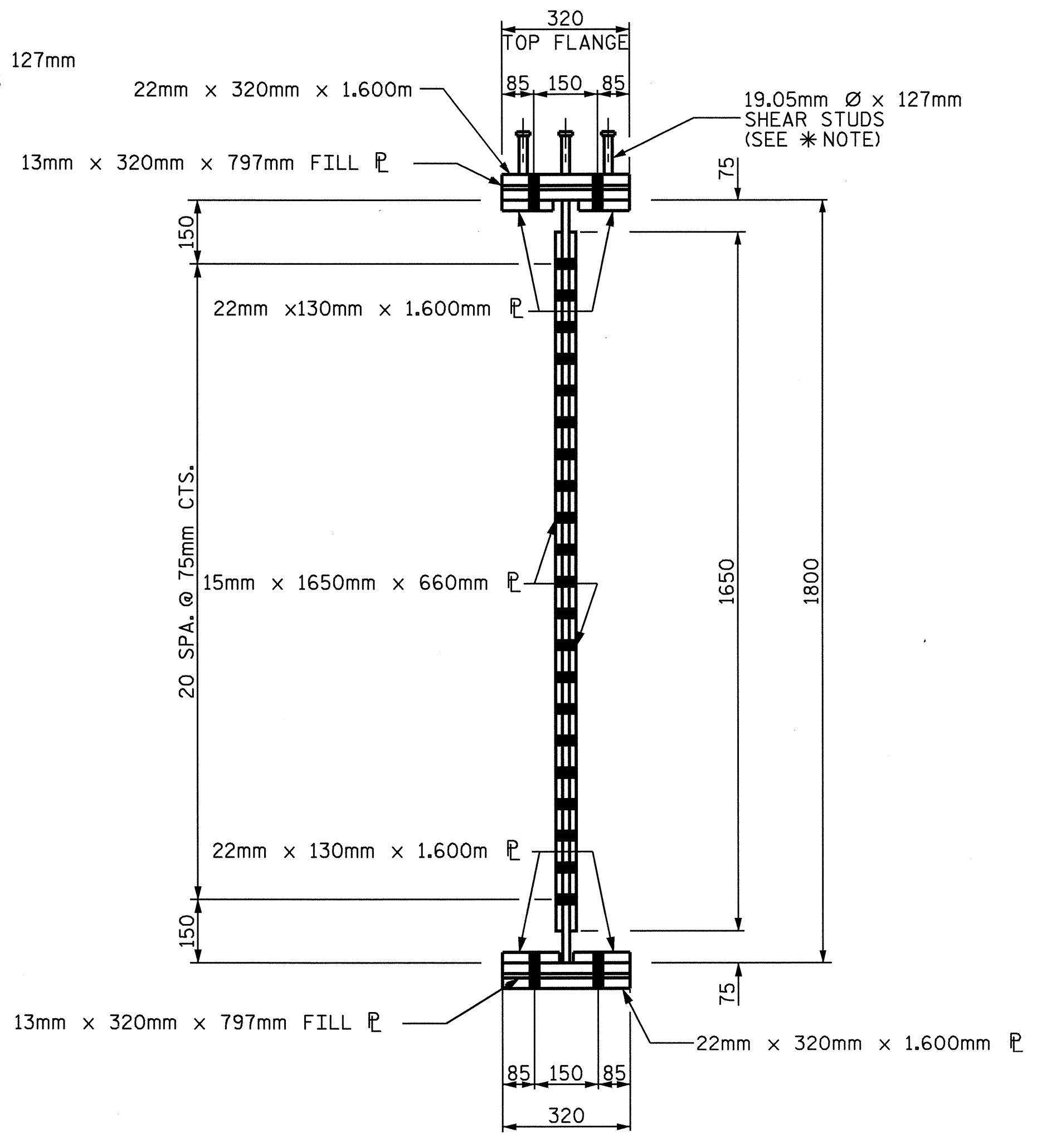
**PLAN OF BOTTOM FLANGE**

TOP OF BOTTOM FLANGE SHOWN  
 BOTTOM PLATE FOR TOP FLANGE SIMILAR

**NOTES :**  
 ALL STRUCTURAL STEEL SHALL BE AASHTO M270 GRADE 345W AND PAINTED IN ACCORDANCE WITH SYSTEM 4 OF ARTICLE 442-7 OF THE STANDARD SPECIFICATIONS UNLESS OTHERWISE NOTED ON THE PLANS.  
 ALL DIMENSIONS SHOWN ARE HORIZONTAL OR VERTICAL, UNLESS OTHERWISE NOTED.  
 ALL FIELD CONNECTIONS TO BE 22.23mm Ø HIGH STRENGTH BOLTS UNLESS OTHERWISE NOTED.  
 CAMBERED GIRDER LENGTHS SHALL BE ADJUSTED AND BEARINGS ARE TO BE PLACED ON THE CAMBERED GIRDER SO AS TO BE ALIGNED WITH THE ANCHORS AFTER THE DEAD LOAD DEFLECTION HAS OCCURED. SHOP PLANS SHALL BE PREPARED ACCORDINGLY.  
 SHOP SPLICES ARE PERMITTED TO LIMIT THE MAXIMUM REQUIRED FLANGE PIECE LENGTHS TO 18 METERS AND WEB PIECE LENGTHS TO 13.5 METERS. PERMITTED FLANGE AND WEB SHOP SPLICES SHALL NOT BE LOCATED WITHIN 4.5 METERS OF MAXIMUM DEAD LOAD DEFLECTION NOR WITHIN 4.5 METERS OF INTERMEDIATE BEARINGS OF CONTINUOUS UNITS. KEEP 0.6 METER MINIMUM BETWEEN WEB AND FLANGE SHOP SPLICES.  
 STUDS ON GIRDERS MAY BE SHIFTED UP TO 25 MM IF NECESSARY TO CLEAR FLANGE SPLICE WELD.  
 END OF GIRDERS SHALL BE PLUMB.  
 \* SHEAR STUDS ARE TO BE SHOP WELDED ON TOP OF PLATE BEFORE FIELD ASSEMBLY



**ELEVATION**



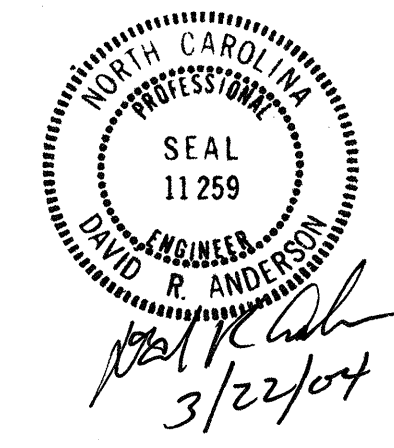
**SECTION A-A**

**BOLTED FIELD SPLICE DETAILS**

PROJECT NO. R-513C  
ROBESON COUNTY  
 STATION: 298+57.237 -L-

SHEET 4 OF 4

STATE OF NORTH CAROLINA  
 DEPARTMENT OF TRANSPORTATION  
 RALEIGH  
 SUPERSTRUCTURE  
 STRUCTURAL STEEL  
 STEEL DETAILS



REVISIONS						SHEET NO.	
NO.	BY:	DATE:	NO.	BY:	DATE:	5-257	
1			3			TOTAL SHEETS	
2			4			312	

DRAWN BY : S. M. RASHIDI DATE : 9/7/01  
 CHECKED BY : N. Q. TRAN DATE : 10/8/02