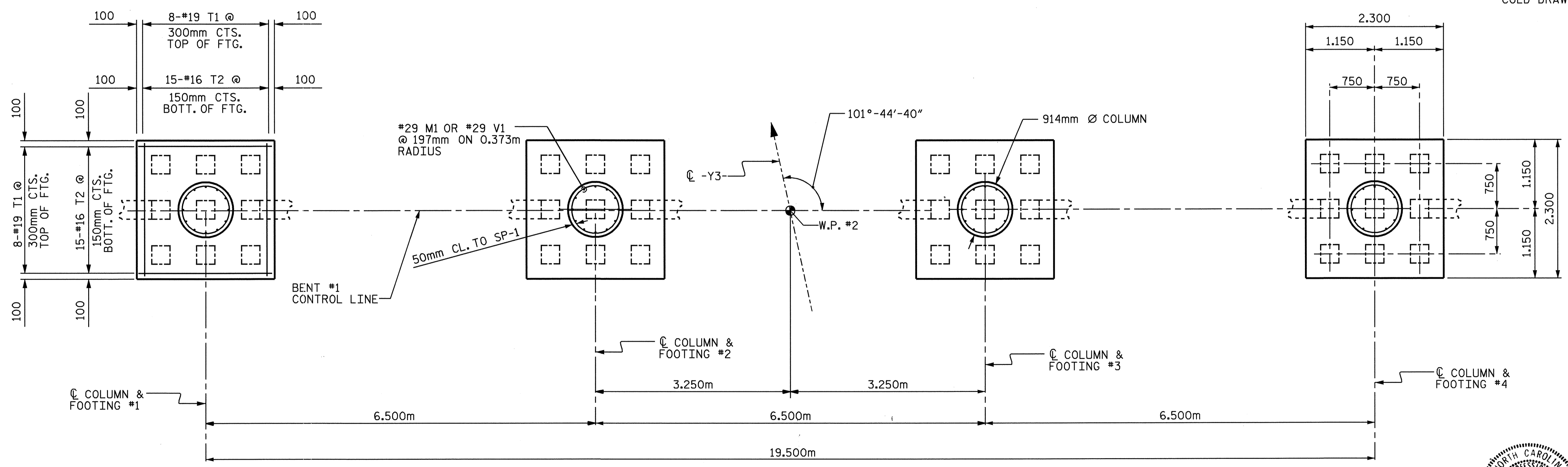


BILL OF MATERIAL					
BENT 1					
BAR NO.	SIZE	TYPE	LENGTH	WEIGHT	
B1	14	36	1	14080	1559
B2	14	36	STR	13040	1444
B3	8	19	STR	12140	217
B4	14	13	STR	5520	77
M1	48	29	1	2560	622
S1	24	16	2	3420	127
S2	172	16	2	3140	838
T1	64	19	STR	2140	306
T2	120	16	STR	2140	399
U1	55	13	3	1880	103
U2	8	13	3	1820	14
U3	8	13	3	1960	16
V1	48	29	1	5980	1452
TOTAL REINFORCING STEEL (kg)					7174
SPIRAL REINFORCING STEEL (kg)					
SP-1	4	**	4	177900	707
TOTAL SPIRAL REINFORCING STEEL (kg)					707
CLASS A CONCRETE BREAKDOWN (m ³)					
POUR #1 (FOOTINGS)					19.5
POUR #2 (COLUMNS)					13.1
POUR #3 (BENT CAP)					32.0
TOTAL					64.6
305mm P/S CONCRETE PILES					
NO.	36		METERS	522	
NOTE: CONCRETE DISPLACED BY CONCRETE PILES HAS BEEN DEDUCTED FROM THE TOTAL CONCRETE QUANTITY.					



PLAN OF FOOTINGS
INFORMATION IS TYPICAL
IN COLUMNS, FOOTINGS.

* THE "SP" SPIRAL REINFORCING STEEL SHALL BE W20 OR D20 COLD DRAWN WIRE OR #13 PLAIN OR DEFORMED BAR.

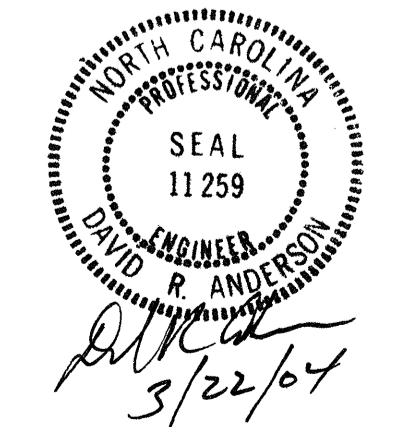
PROJECT NO. R-513C
ROBESON COUNTY
STATION: 298+57.237 -L-

SHEET 2 OF 2

STATE OF NORTH CAROLINA
DEPARTMENT OF TRANSPORTATION
RALEIGH

**SUBSTRUCTURE
BENT #1**

REVISIONS						SHEET NO.	
NO.	BY:	DATE:	NO.	BY:	DATE:	S-270	
1			3			TOTAL SHEETS 312	
2			4				



DRAWN BY : S. M. RASHIDI DATE : 4/29/02
CHECKED BY : N. TRAN DATE : 11/13/02