

NOTES

APPROACH SLAB SHALL NOT BE CONSTRUCTED PRIOR TO COMPLETION OF THE BRIDGE DECK.

FOR REINFORCED BRIDGE APPROACH FILL INCLUDING FABRIC, IMPERMEABLE GEOMEMBRANE, 102mm Ø DRAINAGE PIPE, #78M STONE, AND SELECT MATERIAL, SEE ROADWAY PLANS.

TEMPORARY DRAINAGE AND TEMPORARY BERM AND SLOPE DRAINS WILL BE PAID FOR UNDER THE LUMP SUM PRICE FOR BRIDGE APPROACH SLAB.

AREA BETWEEN THE WINGWALL AND APPROACH SLAB SHALL BE GRADED TO DRAIN THE WATER AWAY FROM THE FILL FACE OF THE BRIDGE.

THE 150mm COMP. A.B.C. SHALL EXTEND 3m BEYOND THE END OF THE APPROACH SLAB AND 300mm OUTSIDE OF EACH EDGE OF THE SLAB.

THE CONTRACTOR MAY USE 100mm TYPE B-25.0B ASPHALT CONCRETE COURSE IN LIEU OF 150mm COMP. A.B.C. IF THIS OPTION IS USED, THE BASE COURSE SHALL EXTEND 300mm BEYOND THE END OF THE APPROACH SLAB AND THE WIDTH SHALL BE THE SAME AS THAT OF THE APPROACH SLAB.

THE CONTRACTOR MAY USE 125mm CLASS "A" CONCRETE BASE IN LIEU OF 150mm COMP. A.B.C. IF THIS OPTION IS USED, THE CONCRETE BASE SHALL EXTEND 300mm BEYOND THE END OF THE APPROACH SLAB AND THE WIDTH SHALL BE THE SAME AS THAT OF THE APPROACH SLAB. THE CONCRETE SHALL BE FINISHED TO A SMOOTH SURFACE AND A LAYER OF 13.6 kg ROOFING FELT SHALL BE PLACED BETWEEN THE CONCRETE BASE AND THE APPROACH SLAB TO PREVENT BOND. THE APPROACH SLAB SHALL NOT BE CAST UNTIL THE CONCRETE BASE HAS REACHED AN AGE OF THREE CURING DAYS.

THE JOINT SHALL BE SAWS PRIOR TO THE CASTING OF THE BARRIER RAIL.

THE COST OF THE BARRIER RAIL ON THE APPROACH SLAB SHALL BE INCLUDED IN THE LUMP SUM CONTRACT PRICE BID FOR BRIDGE APPROACH SLABS.

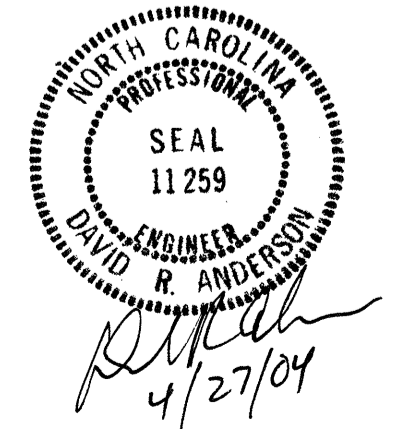
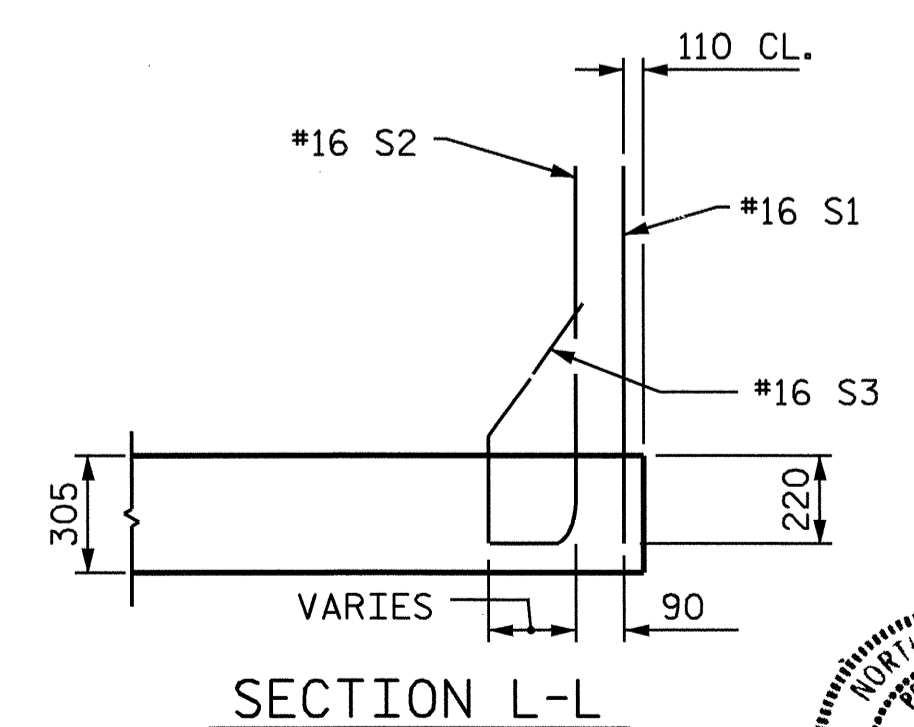
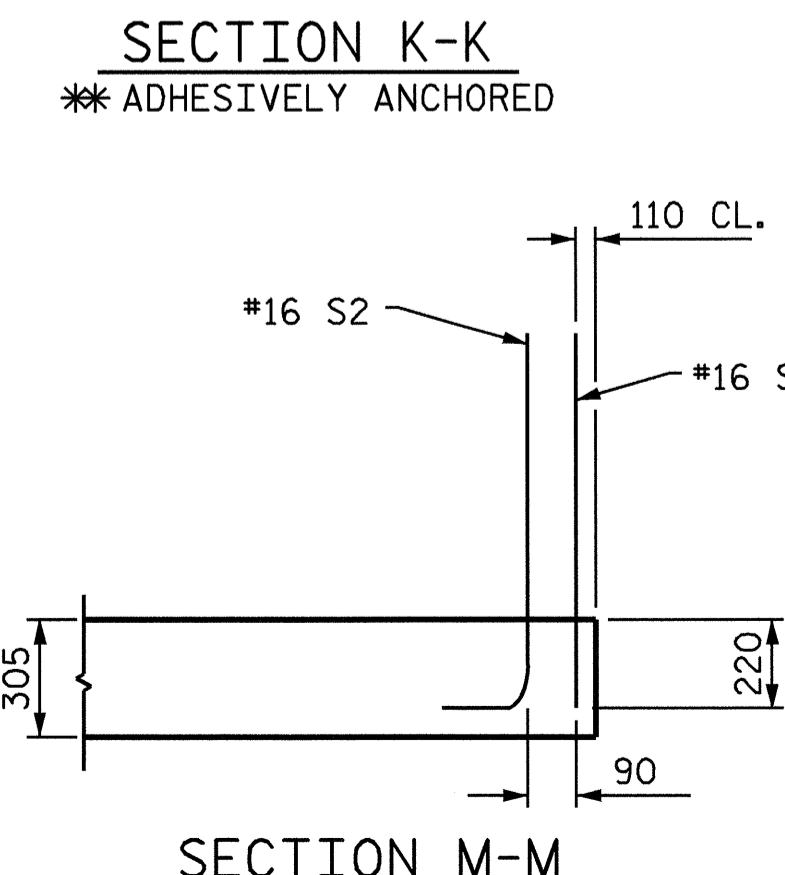
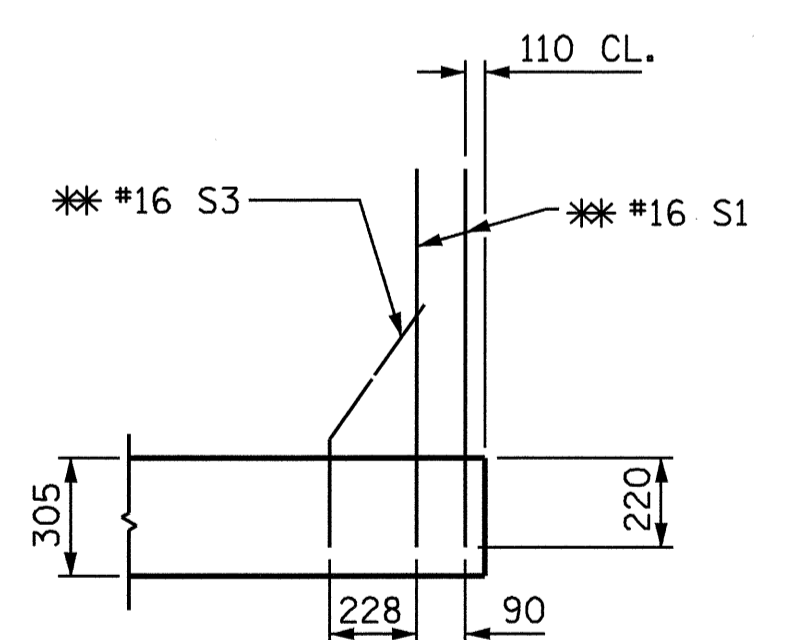
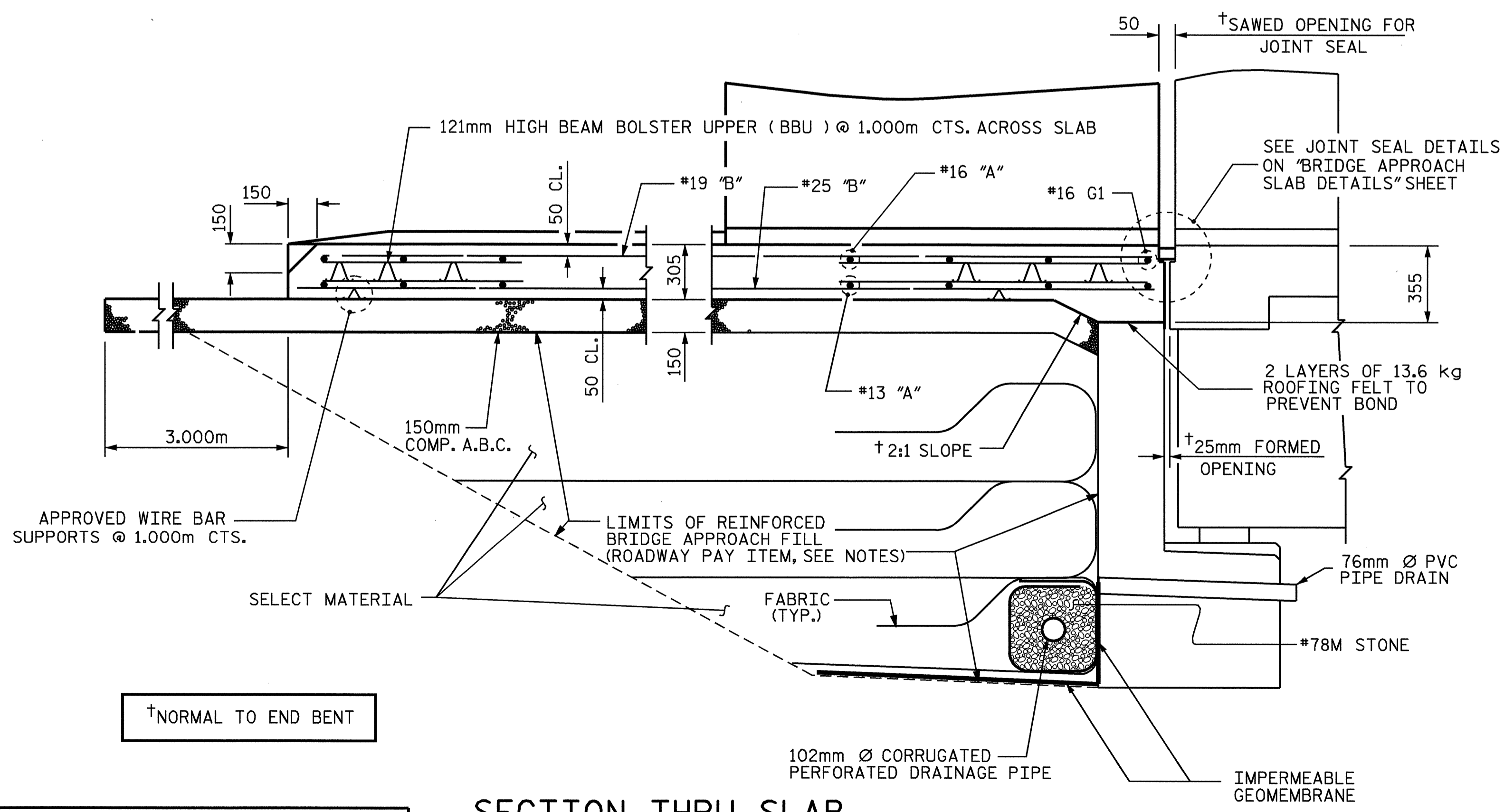
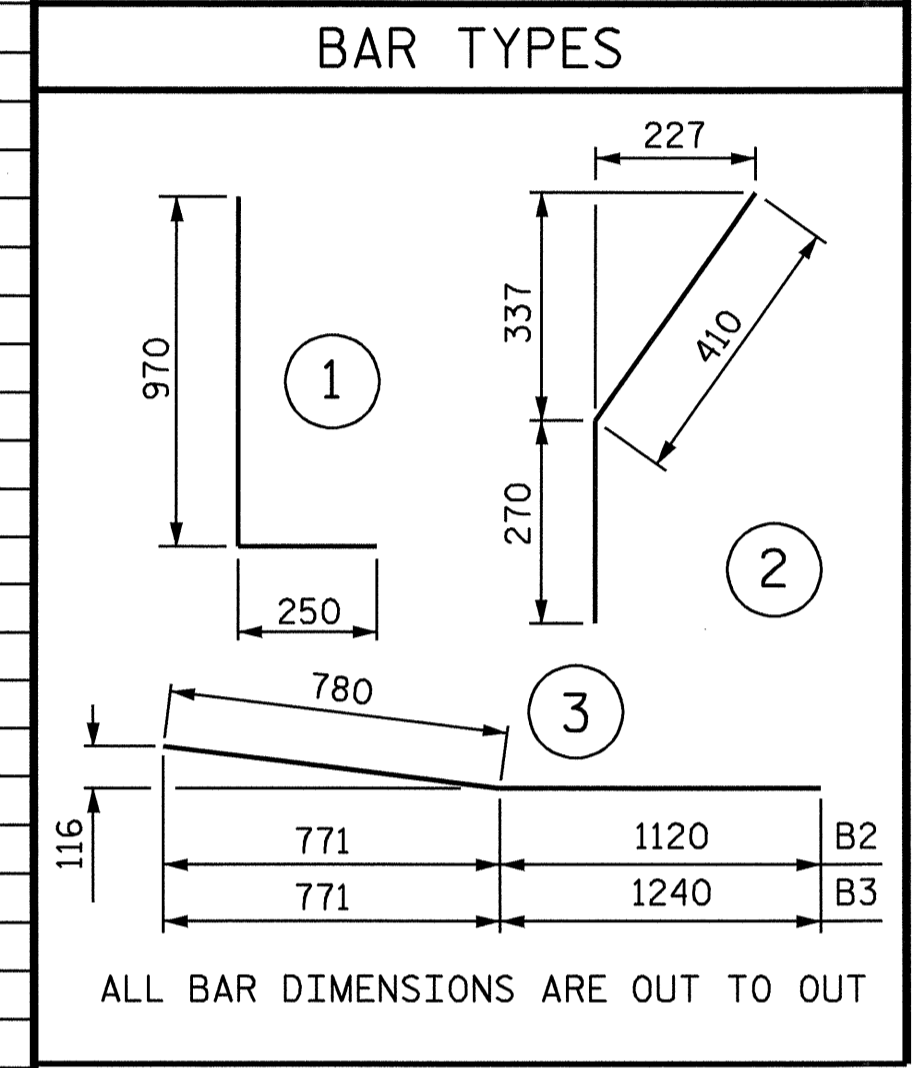
WITH EVAZOTE JOINT SEAL

FOR EVAZOTE JOINT SEALS, SEE SPECIAL PROVISIONS.

THE NOMINAL UNCOMPRESSED SEAL WIDTH OF THE EVAZOTE JOINT SEAL SHALL BE 64mm.

**BILL OF MATERIAL
FOR ONE APPROACH SLAB (2 REQ'D)**

BAR	NO.	SIZE	TYPE	LENGTH	WEIGHT	BAR	NO.	SIZE	TYPE	LENGTH	WEIGHT	BAR	NO.	SIZE	TYPE	LENGTH	WEIGHT	BAR	NO.	SIZE	TYPE	LENGTH	WEIGHT
*A1	114	#16	STR	12240	2166	A207	1	#13	STR	3920	4	*B115	6	#19	STR	10000	134	*S3	20	#16	2	680	21
A2	180	#13	STR	8260	1478	A208	1	#13	STR	3200	3	*B116	6	#19	STR	10180	137						
*A101	1	#16	STR	12220	19	A209	1	#13	STR	2480	2	*B117	6	#19	STR	10360	139	*B1	14	#16	STR	3580	78
*A102	1	#16	STR	11500	18	A210	1	#13	STR	1760	2	*B118	6	#19	STR	10560	142	*B2	1	#16	3	1900	3
*A103	1	#16	STR	10780	17	A211	1	#13	STR	8740	9	*B119	6	#19	STR	10740	144	*B3	1	#16	3	2020	3
*A104	1	#16	STR	10060	16	A212	1	#13	STR	8020	8	*B120	6	#19	STR	10940	147						
*A105	1	#16	STR	9340	14	A213	1	#13	STR	7300	7	*B121	6	#19	STR	11120	149						
*A106	1	#16	STR	8620	13	A214	1	#13	STR	6580	7	*B122	6	#19	STR	11300	152						
*A107	1	#16	STR	7900	12	A215	1	#13	STR	5860	6	*B123	6	#19	STR	11500	154						
*A108	1	#16	STR	7180	11	A216	1	#13	STR	5140	5	*B124	6	#19	STR	11680	157						
*A109	1	#16	STR	6460	10	A217	1	#13	STR	4420	4	*B125	6	#19	STR	11860	159						
*A110	1	#16	STR	5740	9	A218	1	#13	STR	3700	4	*B126	6	#19	STR	12060	162						
*A111	1	#16	STR	5020	8	A219	1	#13	STR	2980	3	*B127	2	#19	STR	12120	54						
*A112	1	#16	STR	4300	7	A220	1	#13	STR	2260	2												
*A113	1	#16	STR	3580	6	A221	1	#13	STR	1540	2	B201	6	#25	STR	7540	180						
*A114	1	#16	STR	2860	4	A222	1	#13	STR	8520	8	B202	6	#25	STR	7720	184						
*A115	1	#16	STR	2140	3	A223	1	#13	STR	7800	8	B203	6	#25	STR	7920	189						
*A116	1	#16	STR	1420	2	A224	1	#13	STR	7080	7	B204	6	#25	STR	8100	193						
*A117	1	#16	STR	12120	19	A225	1	#13	STR	6360	6	B205	6	#25	STR	8280	197						
*A118	1	#16	STR	11400	18	A226	1	#13	STR	5640	6	B206	6	#25	STR	8480	202						
*A119	1	#16	STR	10680	17	A227	1	#13	STR	4920	5	B207	6	#25	STR	8660	206						
*A120	1	#16	STR	9960	15	A228	1	#13	STR	4200	4	B208	6	#25	STR	8840	211						
*A121	1	#16	STR	9240	14	A229	1	#13	STR	3480	3	B209	6	#25	STR	9040	215						
*A122	1	#16	STR	8520	13	A230	1	#13	STR	2760	3	B210	6	#25	STR	9220	220						
*A123	1	#16	STR	7800	12	A231	1	#13	STR	2040	2	B211	6	#25	STR	9400	224						
*A124	1	#16	STR	7080	11	A232	1	#13	STR	1320	1	B212	6	#25	STR	9600	229						
*A125	1	#16	STR	6360	10	A233	1	#13	STR	600	1	B213	6	#25	STR	9780	233						
*A126	1	#16	STR	5640	9							B214	6	#25	STR	9960	237						
*A127	1	#16	STR	4920	8	*B101	6	#19	STR	7380	99	B215	6	#25	STR	10160	242						
*A128	1	#16	STR	4200	7	*B102	6	#19	STR	7560	101	B216	6	#25	STR	10340	246						
*A129	1	#16	STR	3480	5	*B103	6	#19	STR	7760	104	B217	6	#25	STR	10520	251						
*A130	1	#16	STR	2760	4	*B104	6	#19	STR	7940	106	B218	6	#25	STR	10720	256						
*A131	1	#16	STR	2040	3	*B105	6	#19	STR	8120	109	B219	6	#25	STR	10900	260						
*A132	1	#16	STR	1320	2	*B106	6	#19	STR	8320	112	B220	6	#25	STR	11100	265						
*A133	1	#16	STR	600	1	*B107	6	#19	STR	8500	114	B221	6	#25	STR	11280	269						
						*B108	6	#19	STR	8680	116	B222	6	#25	STR	11460	273						
A201	1	#13	STR	8240	8	*B109	6	#19	STR	8880	119	B223	6	#25	STR	11660	278						
A202	1	#13	STR	7520	7	*B110	6	#19	STR	9060	121	B224	6	#25	STR	11840	282						
A203	1	#13	STR	6800	7	*B111	6	#19	STR	9200	123	B225	6	#25	STR	12020	287						
A204	1	#13	STR	6080	6	*B112	6	#19	STR	9440	127	B226	6	#25	STR	12220	291						
A205	1	#13	STR	5360	5	*B113	6	#19	STR	9620	129	B227	2	#25	STR	12300	98						
A206	1	#13	STR	4640	5	*B114	6	#19	STR	9800	131												
												*G1	2	#16	STR	12560	39						
												*S1	58	#16	STR	980	88						
												*S2	42	#16	1	1220	80						



PROJECT NO. R-0513C
ROBESON COUNTY
 STATION: 298+57.237-L-

SHEET 2 OF 5

STATE OF NORTH CAROLINA
 DEPARTMENT OF TRANSPORTATION
 RALEIGH

BRIDGE APPROACH SLAB
 FOR FLEXIBLE PAVEMENT
 WITH BARRIER RAIL

REVISIONS						SHEET NO.	
NO.	BY:	DATE:	NO.	BY:	DATE:	S-277	
1			3			TOTAL SHEETS	312
2			4				

STR #6 REV. STD. NO. BAS2SM