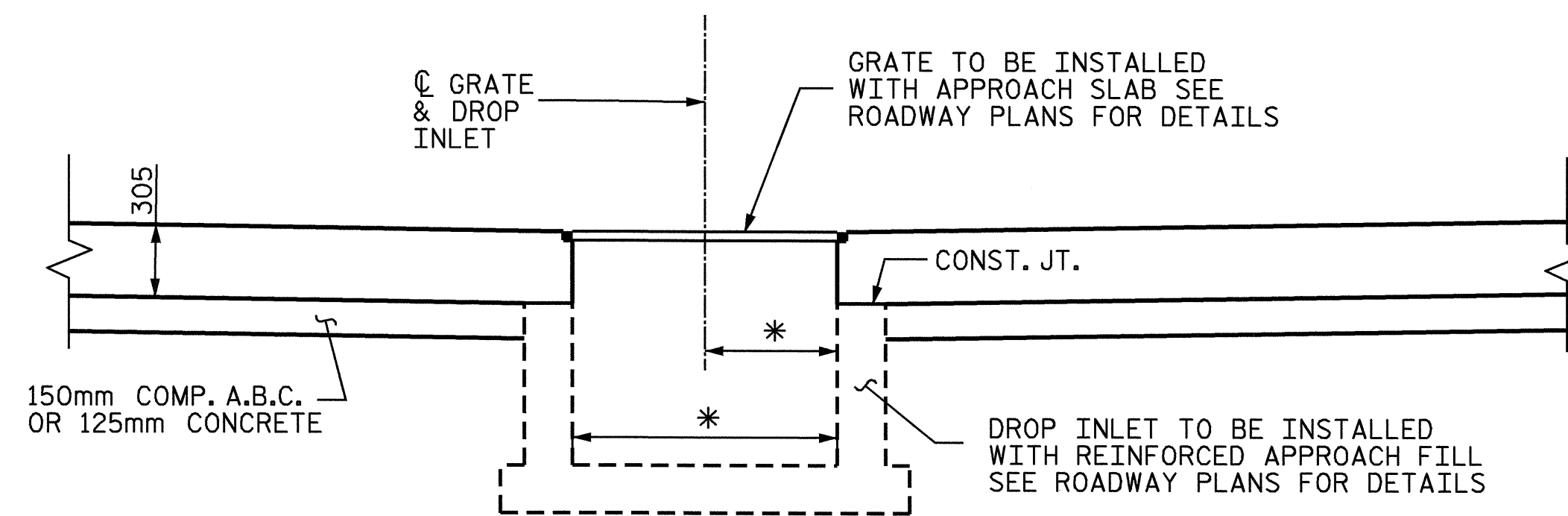


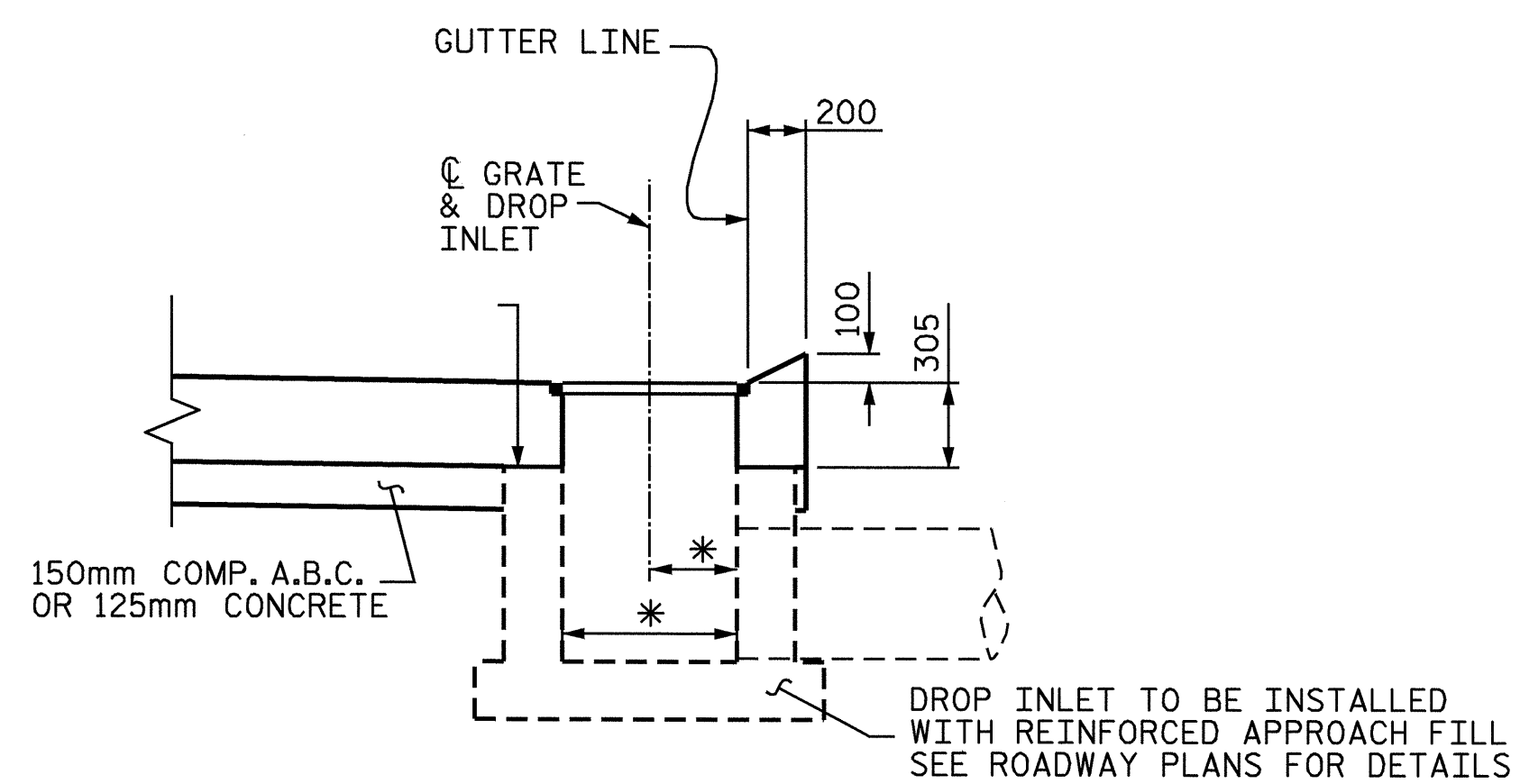
TYPICAL PART PLAN

NOTE: REINFORCING STEEL SHALL BE CUT AND SHIFTED TO ALLOW FOR PLACEMENT OF DROP INLET.



SECTION A-A

* DROP INLET & GRATE ARE ROADWAY PAY ITEMS. SEE ROADWAY PLANS FOR DETAILS. FIELD CUT OR BEND REINFORCING STEEL IN APPROACH SLAB TO ACCOMMODATE DROP INLET BOX.



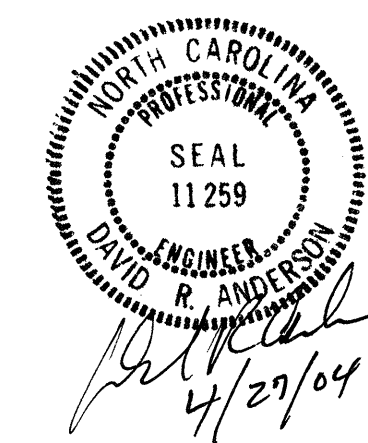
SECTION B-B

PROJECT NO. R-0513C
ROBESON COUNTY
 STATION: 298+57.237-L-

SHEET 5 OF 5

STATE OF NORTH CAROLINA
 DEPARTMENT OF TRANSPORTATION
 RALEIGH

**DRAINAGE STRUCTURE
 ON APPROACH SLAB**



DRAWN BY: R.D. MARTIN DATE: 3/23/04
 CHECKED BY: W.K. FISCHER DATE: 3/30/04

06-APR-2004 12:14
 W:\SquadM\0513c\str6\wkfisher\Microstation\R0513C6.DGN
 wkfisher

REVISIONS						SHEET NO.
NO.	BY:	DATE:	NO.	BY:	DATE:	S-280
1			3			TOTAL SHEETS
2			4			312

STR #6