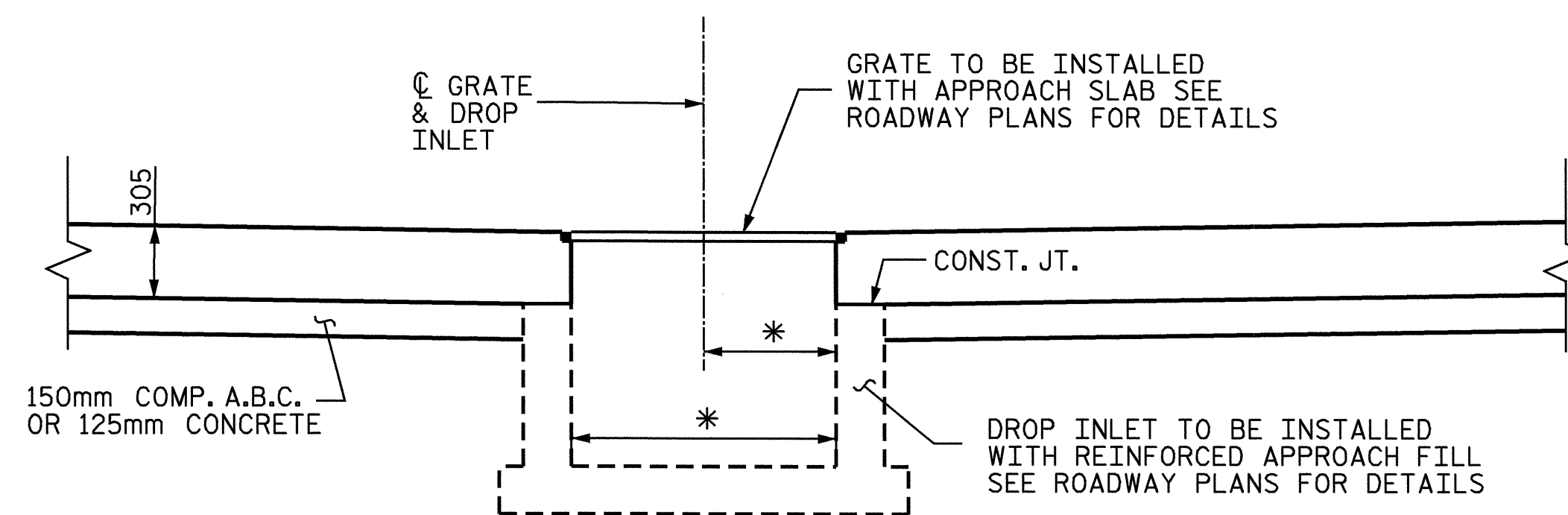
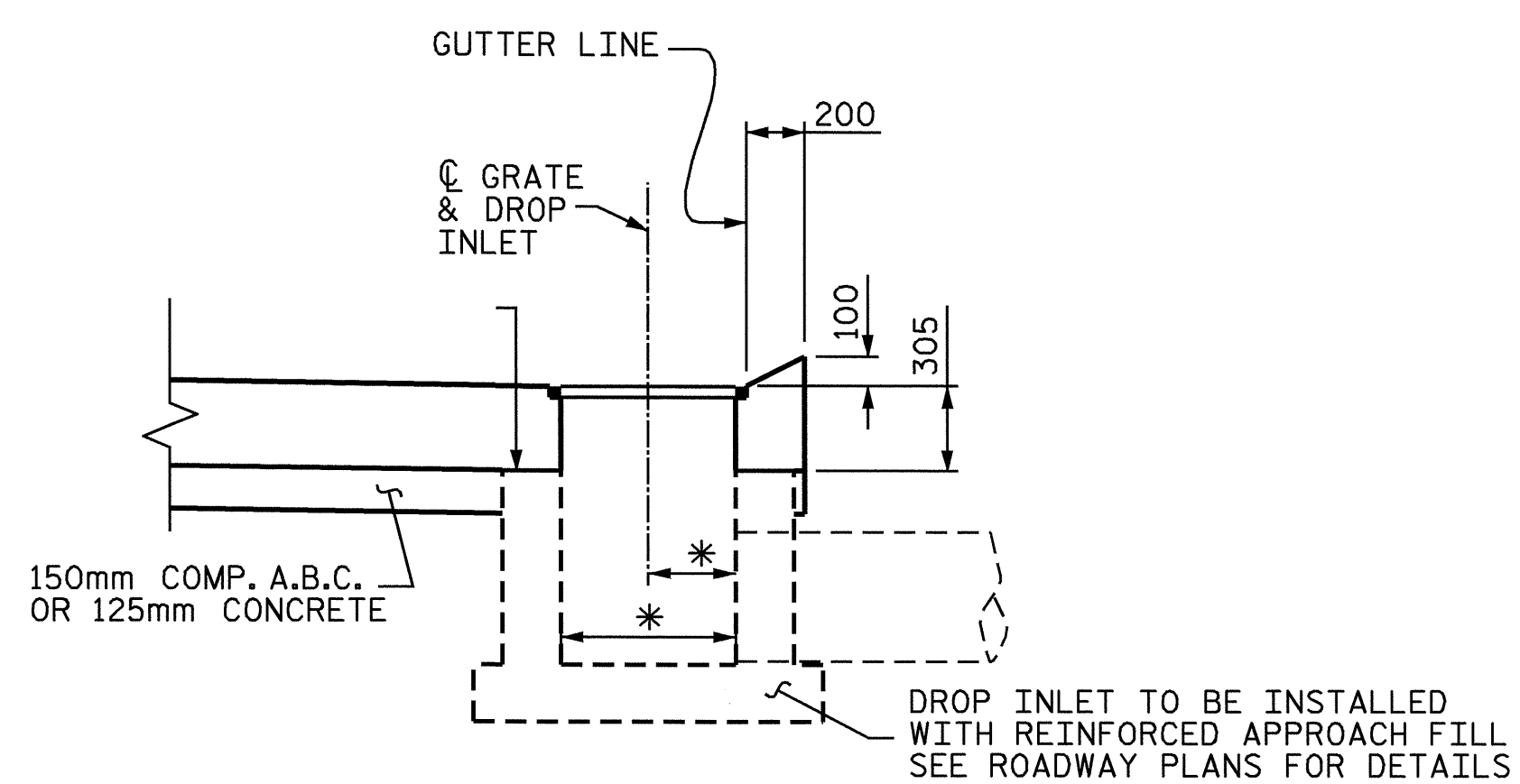


**TYPICAL PART PLAN**

NOTE: REINFORCING STEEL SHALL BE CUT AND SHIFTED TO ALLOW FOR PLACEMENT OF DROP INLET.



**SECTION A-A**



**SECTION B-B**

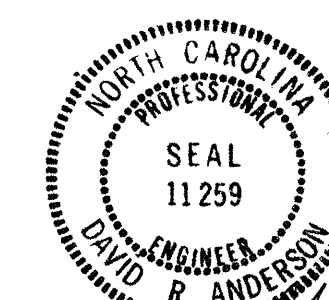
\* DROP INLET & GRATE ARE ROADWAY PAY ITEMS. SEE ROADWAY PLANS FOR DETAILS. FIELD CUT OR BEND REINFORCING STEEL IN APPROACH SLAB TO ACCOMODATE DROP INLET BOX.

PROJECT NO. R-0513C  
ROBESON COUNTY  
 STATION: 318+10.648 -L-

SHEET 5 OF 5

STATE OF NORTH CAROLINA  
 DEPARTMENT OF TRANSPORTATION  
 RALEIGH

**DRAINAGE STRUCTURE  
 ON APPROACH SLAB**



*David R. Anderson*  
 4/27/04

DRAWN BY: H.A. LUCAS DATE: 3/26/04  
 CHECKED BY: W.K. FISCHER DATE: 4/01/04

06-APR-2004 12:14  
 W:\SquidGM\0513c\str7\wkfischer\Microstation\0513c07as\_hl.dgn  
 wkfischer

REVISIONS					SHEET NO.
NO.	BY:	DATE:	NO.	BY:	DATE:
1			3		
2			4		

S-312  
 TOTAL SHEETS  
 312