

PLAN

NOTES

STIRRUPS AND "U" BARS IN CAP MAY BE SHIFTED AS NECESSARY TO CLEAR ANCHOR BOLTS.

HOOKS ON "V" BARS MAY BE TURNED AS NECESSARY FOR PLACING REINFORCING STEEL.

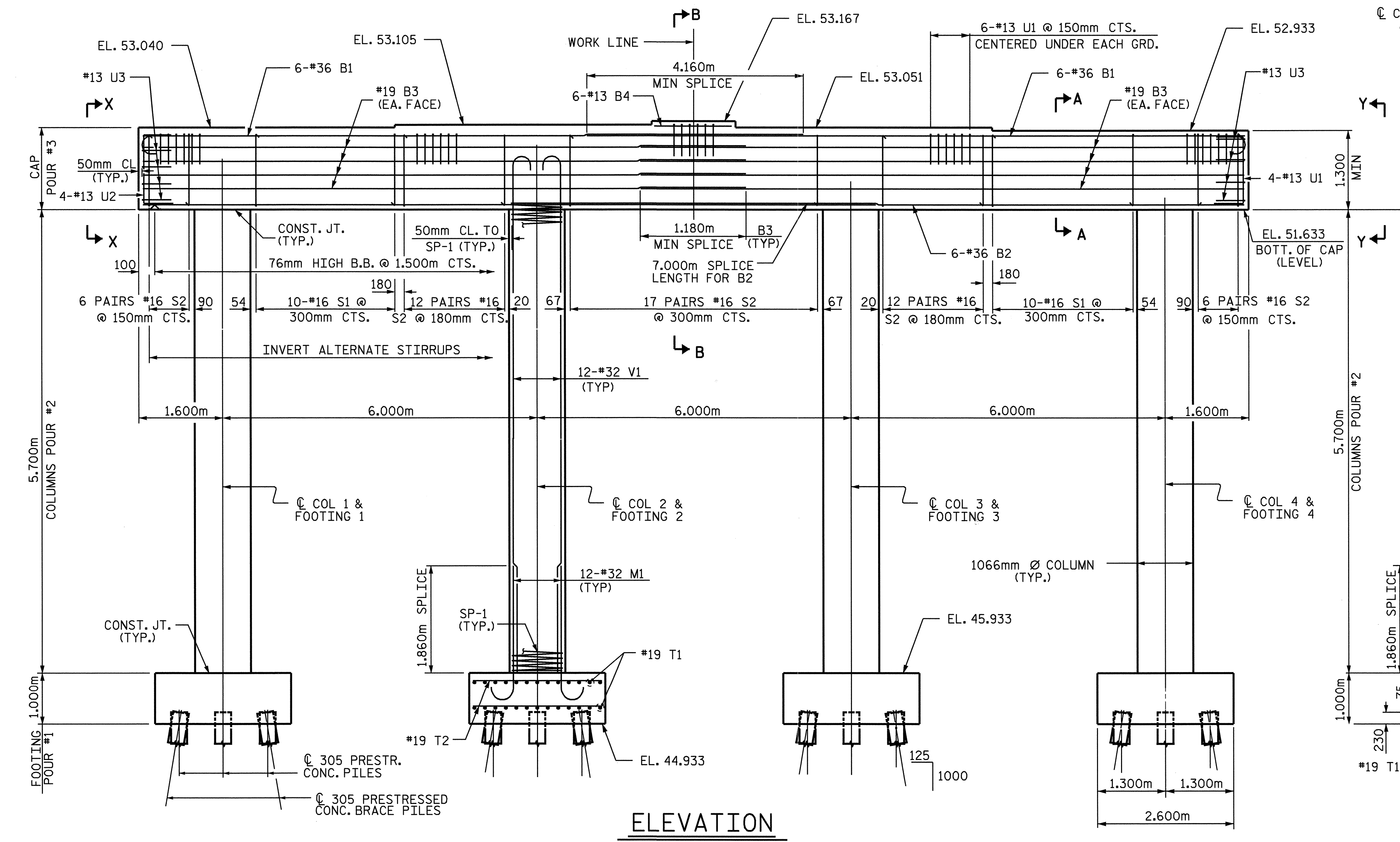
THE TOP SURFACE AREAS OF THE BENT CAPS SHALL BE CURED IN ACCORDANCE WITH THE STANDARD SPECIFICATIONS EXCEPT THAT THE MEMBRANE CURING COMPOUND METHOD SHALL NOT BE USED.

PILES FOR BENT NO.1 SHALL BE DRIVEN TO A MINIMUM BEARING CAPACITY OF 530 KN EACH.

WHEN DRIVING PILES, THE MAXIMUM BLOW COUNT SHALL NOT BE EXCEEDED.

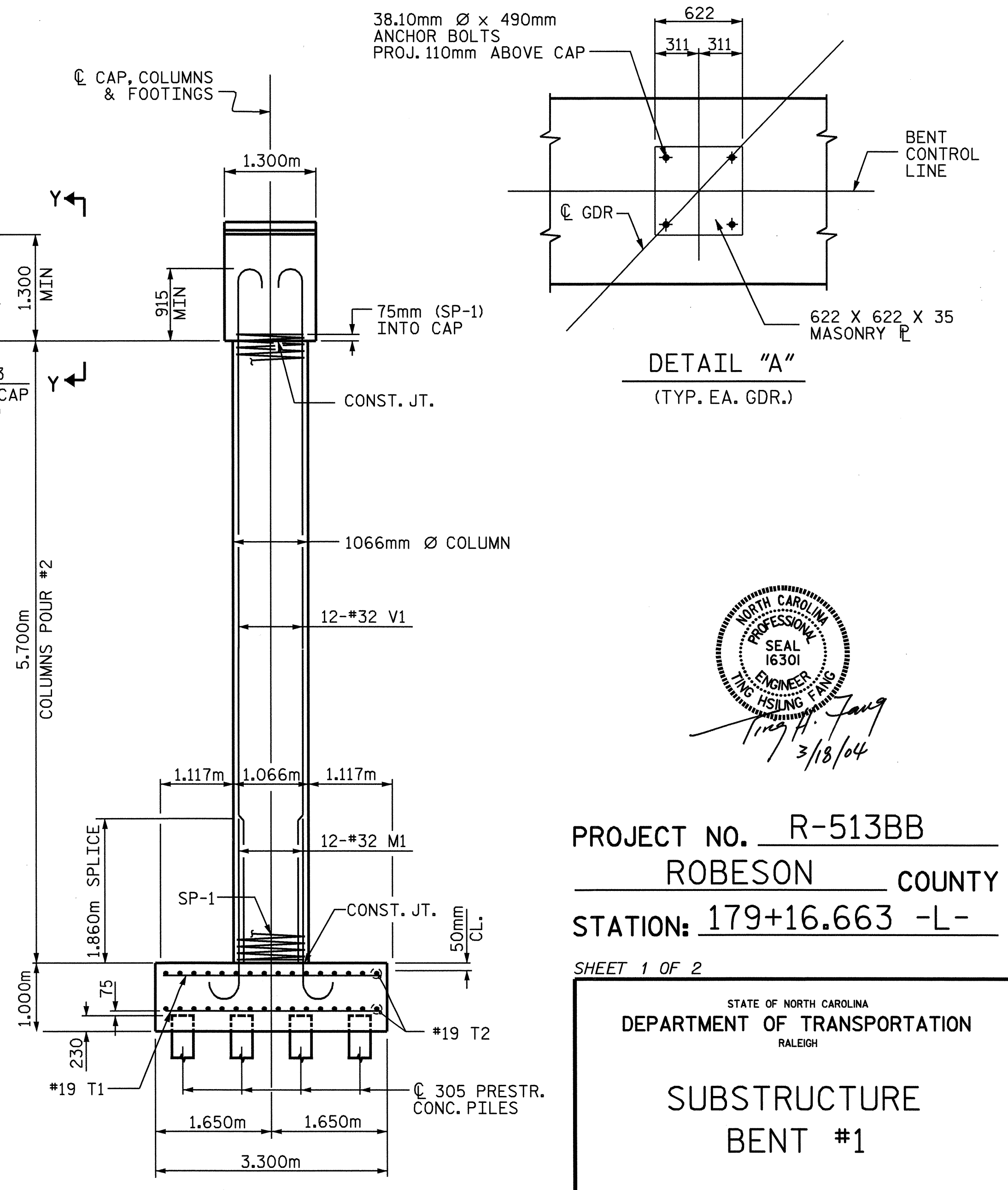
THE CONTRACTOR, AT HIS OPTION, MAY SUBSTITUTE PP305X9.5 STEEL CLOSED END PIPE PILES IN LIEU OF 305mm PRESTRESSED CONCRETE PILES AT NO ADDITIONAL COST TO THE DEPARTMENT.

THE CONTRACTOR WILL BE REQUIRED TO SUBMIT PLANS SHOWING DETAILS OF THE OPTIONAL PIPE PILE FOR APPROVAL BY THE ENGINEER.

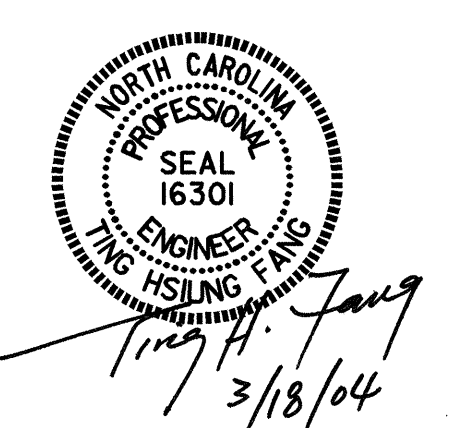


ELEVATION

(REINFORCING STEEL AND DIMENSIONS ARE TYPICAL FOR ALL COLUMNS AND FOOTINGS.)



END ELEVATION



PROJECT NO. R-513BB
ROBESON COUNTY
 STATION: 179+16.663 -L-

SHEET 1 OF 2

STATE OF NORTH CAROLINA
 DEPARTMENT OF TRANSPORTATION
 RALEIGH

**SUBSTRUCTURE
 BENT #1**

REVISIONS						SHEET NO. S-20
NO.	BY:	DATE:	NO.	BY:	DATE:	
1			3			TOTAL SHEETS 312
2			4			

DRAWN BY : T. H. FANG DATE : 9/29/03
 CHECKED BY : W. K. FISCHER DATE : 10/29/03