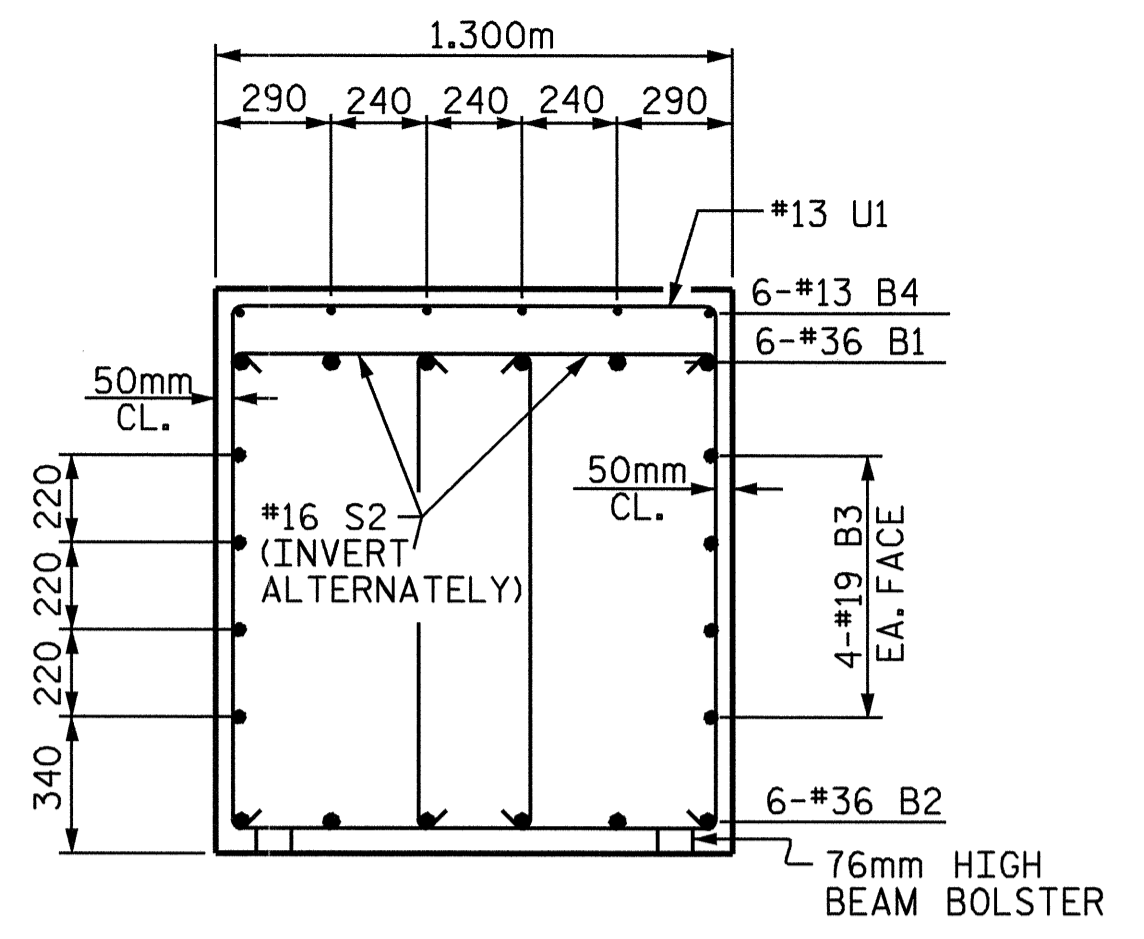
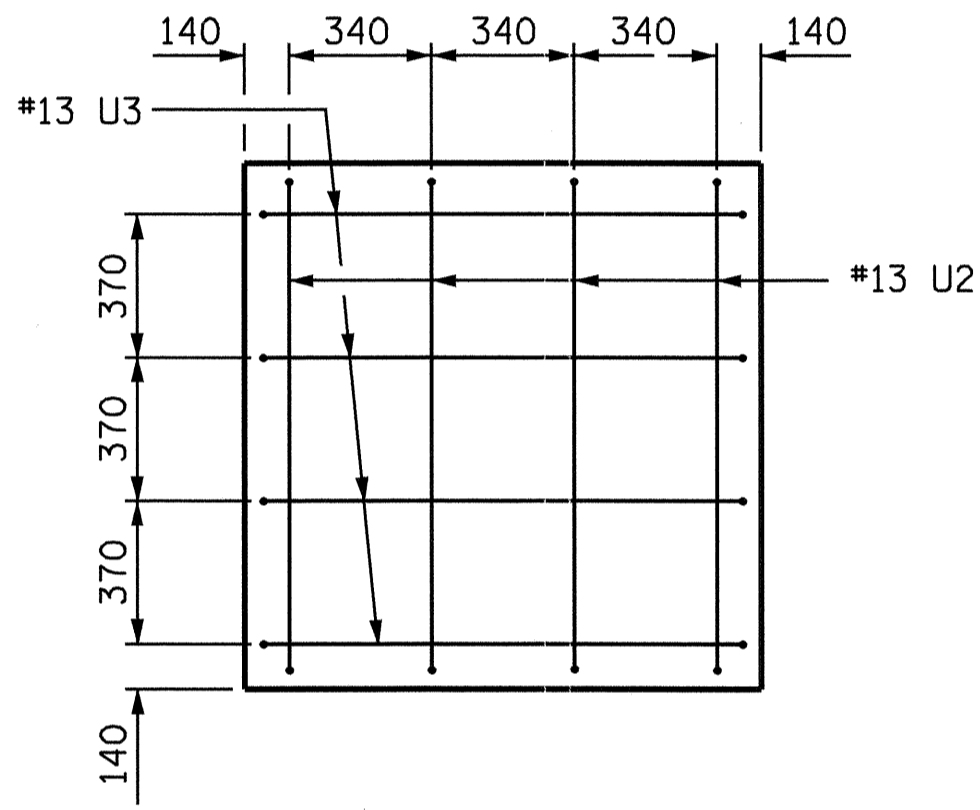


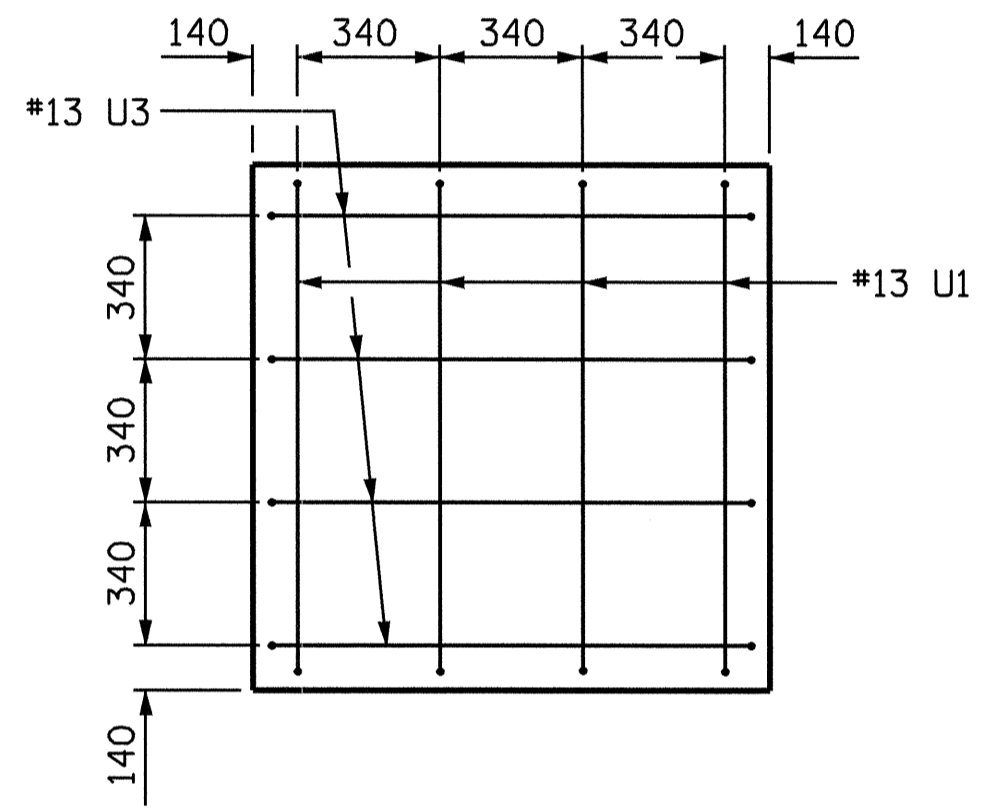
SECTION A-A



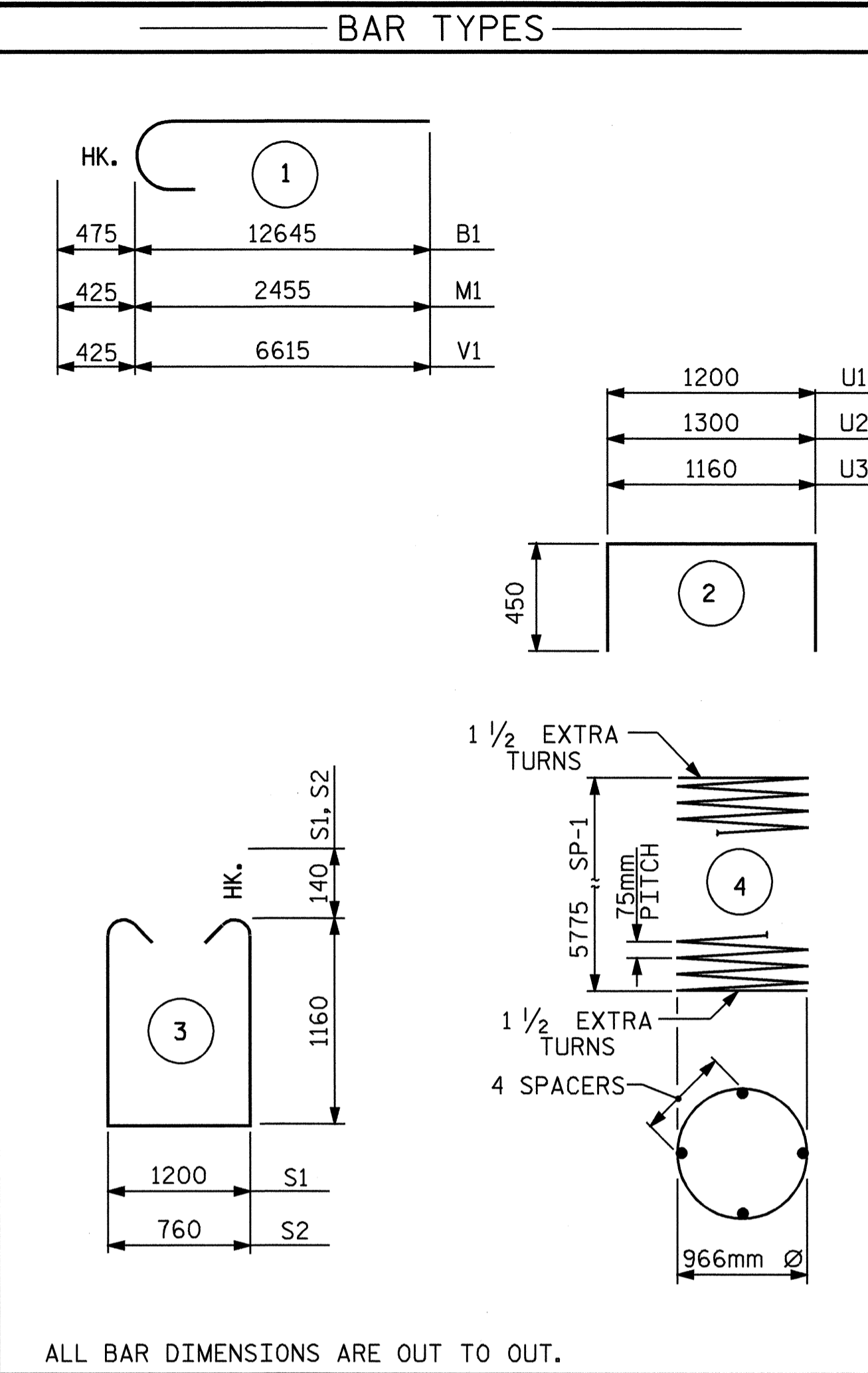
SECTION B-B



VIEW X-X



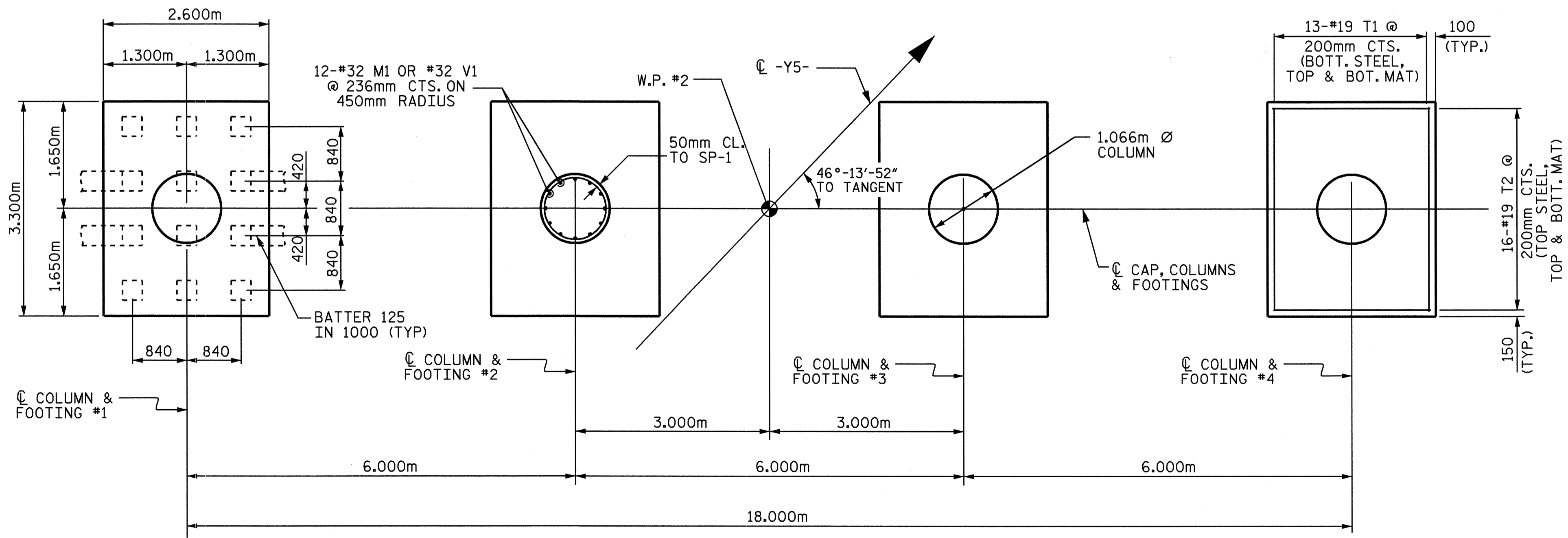
VIEW Y-Y



ALL BAR DIMENSIONS ARE OUT TO OUT.
* THE SP-1 SPIRAL REINFORCING STEEL SHALL BE W20 OR D-20 COLD DRAWN WIRE OR #13 PLAIN OR DEFORMED BAR.

BILL OF MATERIAL					
BENT NO. 1					
BAR	NO.	SIZE	TYPE	LENGTH	WEIGHT
B1	12	36	1	13120	1245
B2	12	36	STR	14040	1332
B3	16	19	STR	11140	398
B4	6	13	STR	1500	9
M1	48	32	1	2880	885
S1	20	16	3	3800	118
S2	106	16	3	3360	523
T1	104	19	STR	3160	735
T2	128	19	STR	2460	704
U1	34	13	2	2100	71
U2	4	13	2	2200	9
U3	8	13	2	2060	16
V1	48	32	1	7040	2164
REINFORCING STEEL				KG	8209
SPIRAL REINFORCING STEEL					
SP-1	4	*	4	239500	952
TOTAL SPIRAL COLUMN REINFORCING STEEL					
				KG	952
CLASS "A" CONCRETE BREAKDOWN					
POUR #1 FOOTINGS				34.3	m ³
POUR #2 COLUMNS				20.3	m ³
POUR #3 CAP				38.9	m ³
CLASS "A" CONCRETE TOTAL				93.5	m ³
305 PRESTRESSED CONCRETE PILES					
NO. 48				METERS	624

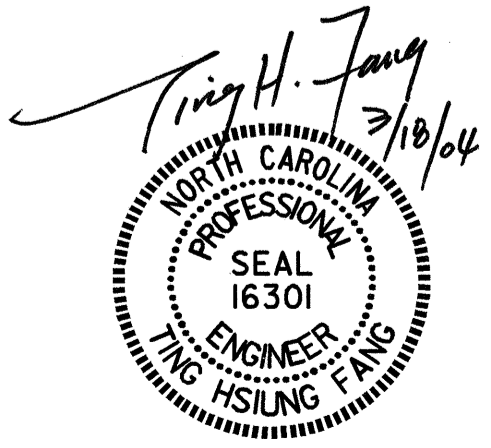
NOTE: CONCRETE DISPLACED BY CONCRETE PILES HAS BEEN DEDUCTED FROM CONCRETE QUANTITY.



PLAN OF FOOTINGS
DETAILS SHOWN FOR FOOTINGS ARE TYPICAL.

PROJECT NO. R-513BB
ROBESON COUNTY
STATION: 179+16.663 -L-
SHEET 2 OF 2

STATE OF NORTH CAROLINA
DEPARTMENT OF TRANSPORTATION
RALEIGH
SUBSTRUCTURE
BENT 1



REVISIONS					SHEET NO.
NO.	BY:	DATE:	NO.	BY:	DATE:
1			3		
2			4		

TOTAL SHEETS: 312

DRAWN BY: T. H. FANG DATE: 9/29/03
CHECKED BY: W. K. FISCHER DATE: 10/29/03