

NOTES

CONCRETE DESIGN DATA :  $f'c = 34.5 \text{ MPa}$ ;  $f_c = 13.8 \text{ MPa}$

IMPACT IN HANDLING = 50%

THE TRANSFER OF LOAD FROM THE ANCHORAGES TO THE PILE SHALL BE DONE WHEN THE CONCRETE HAS REACHED A COMPRESSIVE STRENGTH OF NOT LESS THAN 24.1 MPa.

IN DRIVING PILES, A METHOD APPROVED BY THE ENGINEER SHALL BE USED, WHEREBY THE HEAD OF THE PILE IS NOT DAMAGED.

PROPOSED DEVICES FOR LIFTING PILES, RECESS DETAILS, AND PATCHING MATERIAL SHALL BE DETAILED IN SHOP DRAWINGS. AFTER ATTACHMENTS HAVE BEEN REMOVED, OPENINGS SHALL BE REPAIRED SUCH THAT THE APPEARANCE OF THE PILE IS UNIFORM.

WHERE CAST - IN - PLACE LIFTING DEVICES ARE NOT USED, PICK-UP POINTS TO BE INDICATED WITH A BLACK MARK 50mm WIDE.

ALL PRESTRESSING STRANDS SHALL BE 7-WIRE LOW RELAXATION GRADE 270 STRANDS AND SHALL CONFORM TO AASHTO M203M EXCEPT FOR SAMPLING REQUIREMENTS WHICH SHALL BE IN ACCORDANCE WITH STANDARD SPECIFICATIONS.

THE CONTRACTOR MAY USE EITHER OF THE FOLLOWING STRAND CONFIGURATIONS:

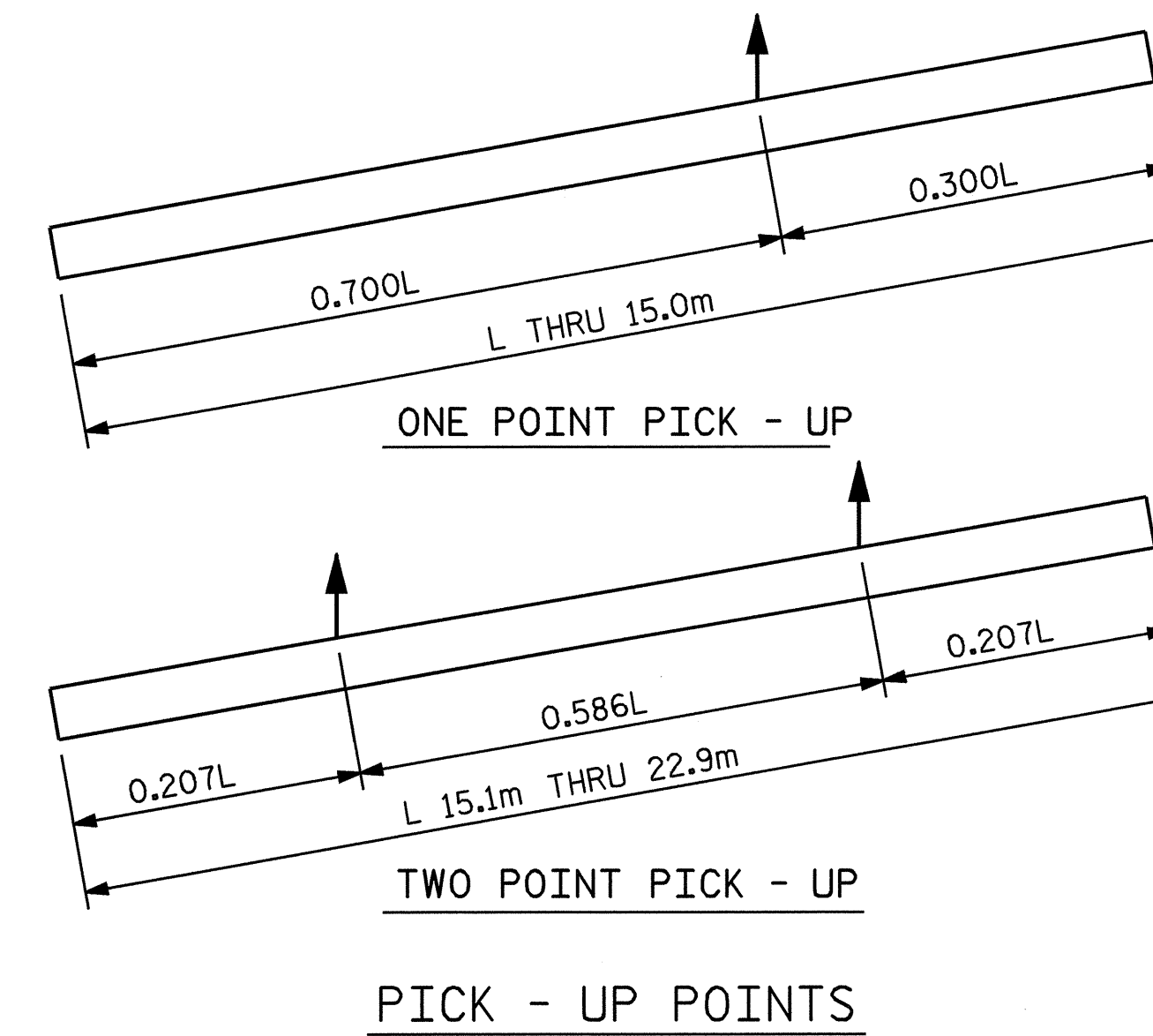
| SIZE  | GRADE | NUMBER OF STRANDS | AREA mm <sup>2</sup> | ULTIMATE STRENGTH KN | APPLIED PRESTRESS FORCE KN |
|-------|-------|-------------------|----------------------|----------------------|----------------------------|
| 12.70 | 270   | 4                 | 98.71                | 183.7 PER STRAND     | 137.8 PER STRAND           |
| 12.70 | 270   | 5                 | 98.71                | 183.7 PER STRAND     | 137.8 PER STRAND           |

THE SLIP-FORM METHOD OF CASTING PILES WILL NOT BE PERMITTED.

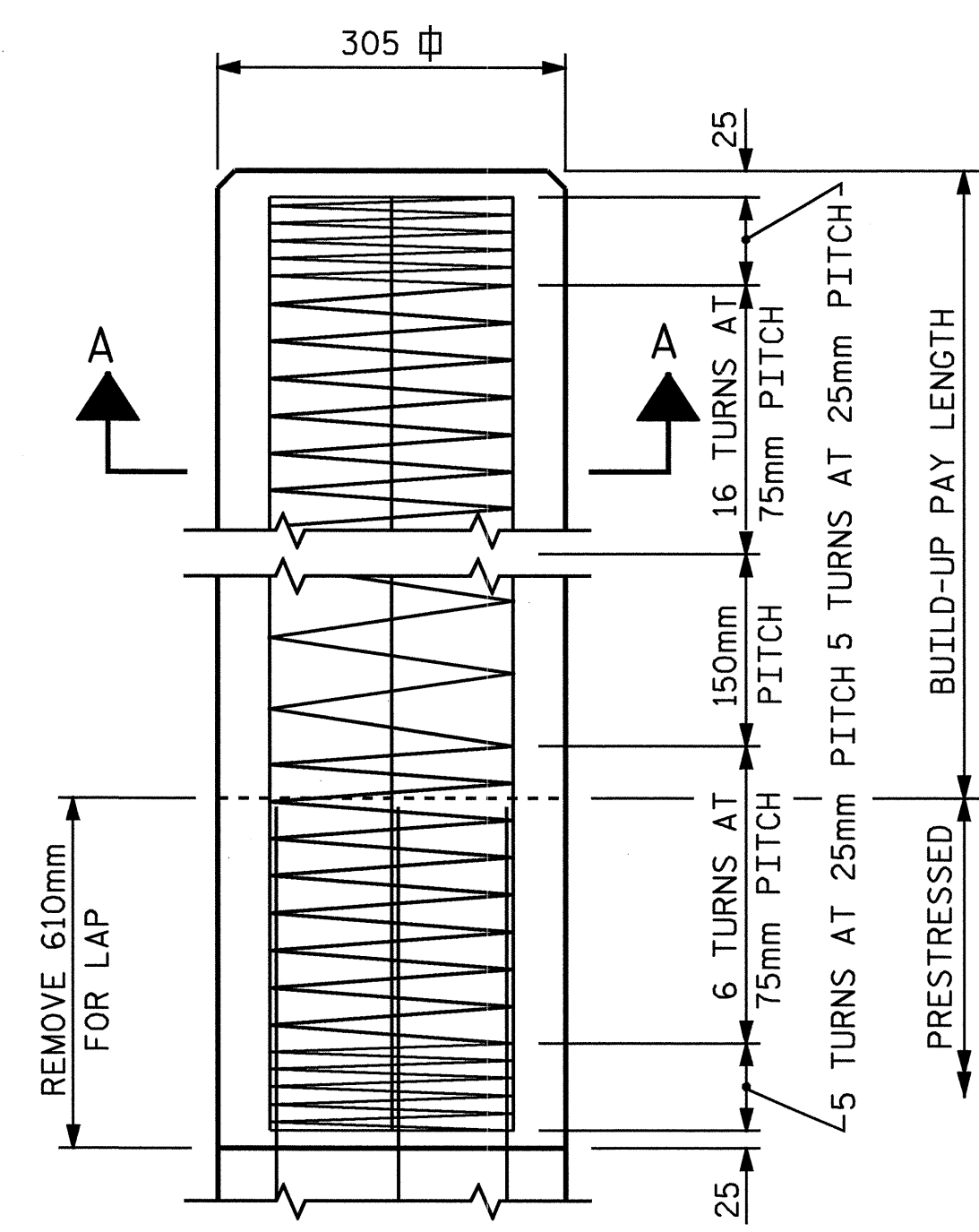
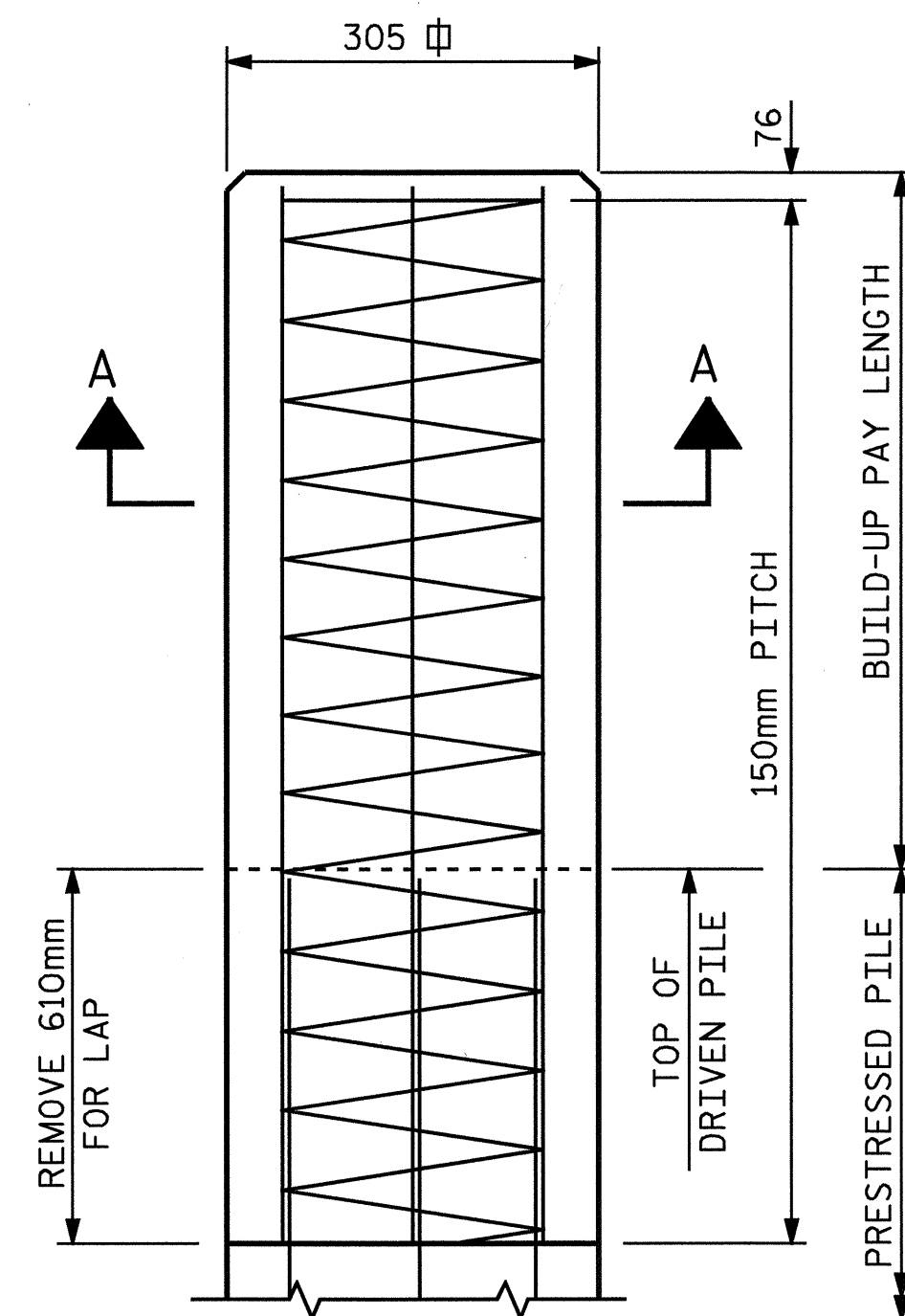
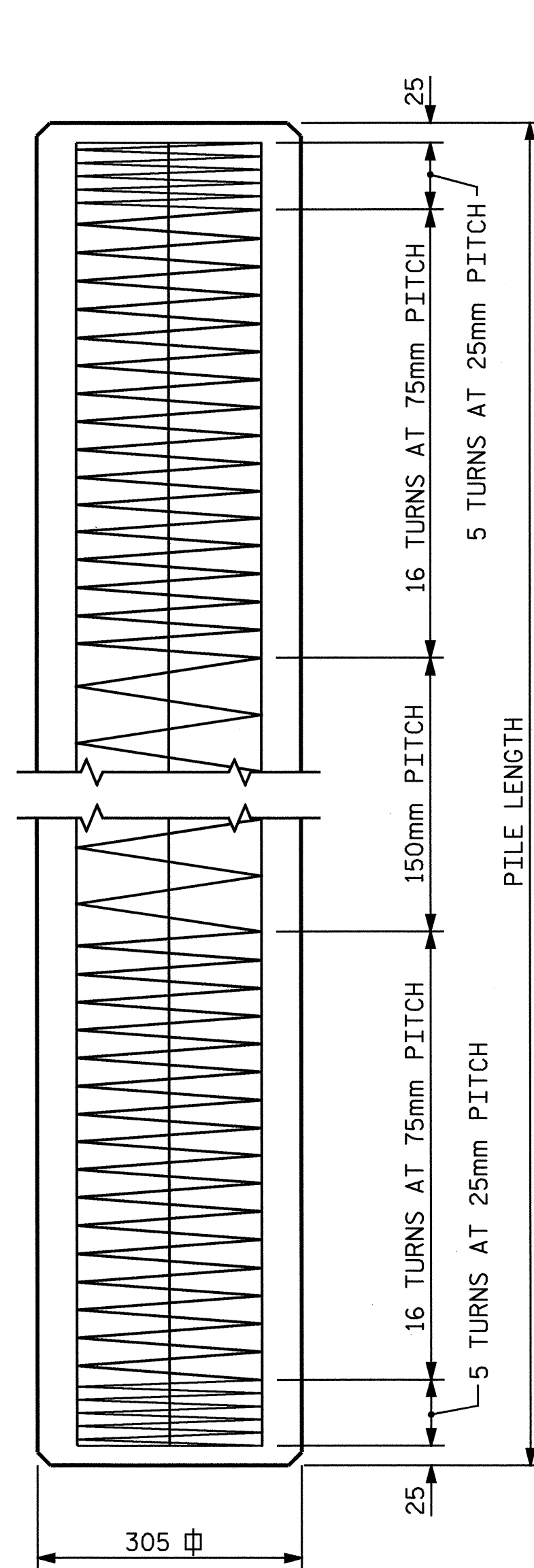
IF STRAND STRESS IS RELIEVED BY BURNING, THE STRANDS SHALL BE BURNED IN PAIRS, EXCEPT WHERE 5 STRANDS ARE USED THE LAST STRAND MAY BE BURNED SINGLY, ACCORDING TO BURNING PATTERNS SHOWN. NOT MORE THAN 4 STRANDS MAY BE BURNED AT ANY ONE SECTION BEFORE THE SAME STRANDS ARE BURNED AT BOTH ENDS OF THE BED AND BETWEEN EACH PAIR OF PILES IN THE BED.

BUILD-UPS SHALL BE 'CLASS A' CONCRETE WITH 20% ADDITIONAL CEMENT. NO DRIVING OF THE BUILT-UP PILE WILL BE PERMITTED UNTIL THE CONCRETE HAS REACHED A COMPRESSIVE STRENGTH OF 20.7 MPa AND UNTIL A PERIOD OF SEVEN DAYS HAS ELAPSED SINCE CASTING OF THE BUILD-UP.

ALL CORNERS TO BE CHAMFERED 19mm.



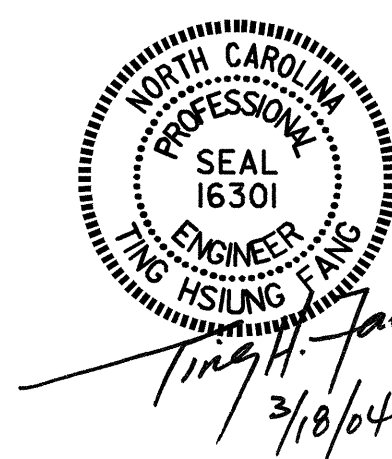
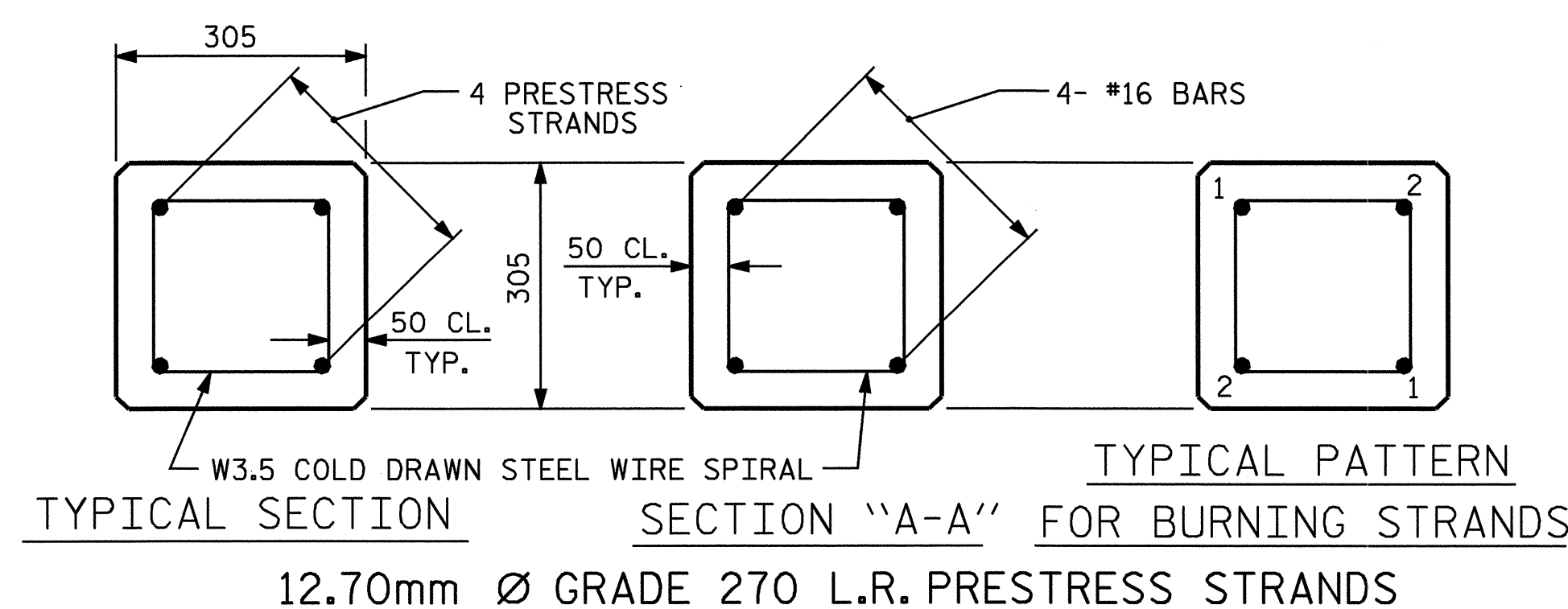
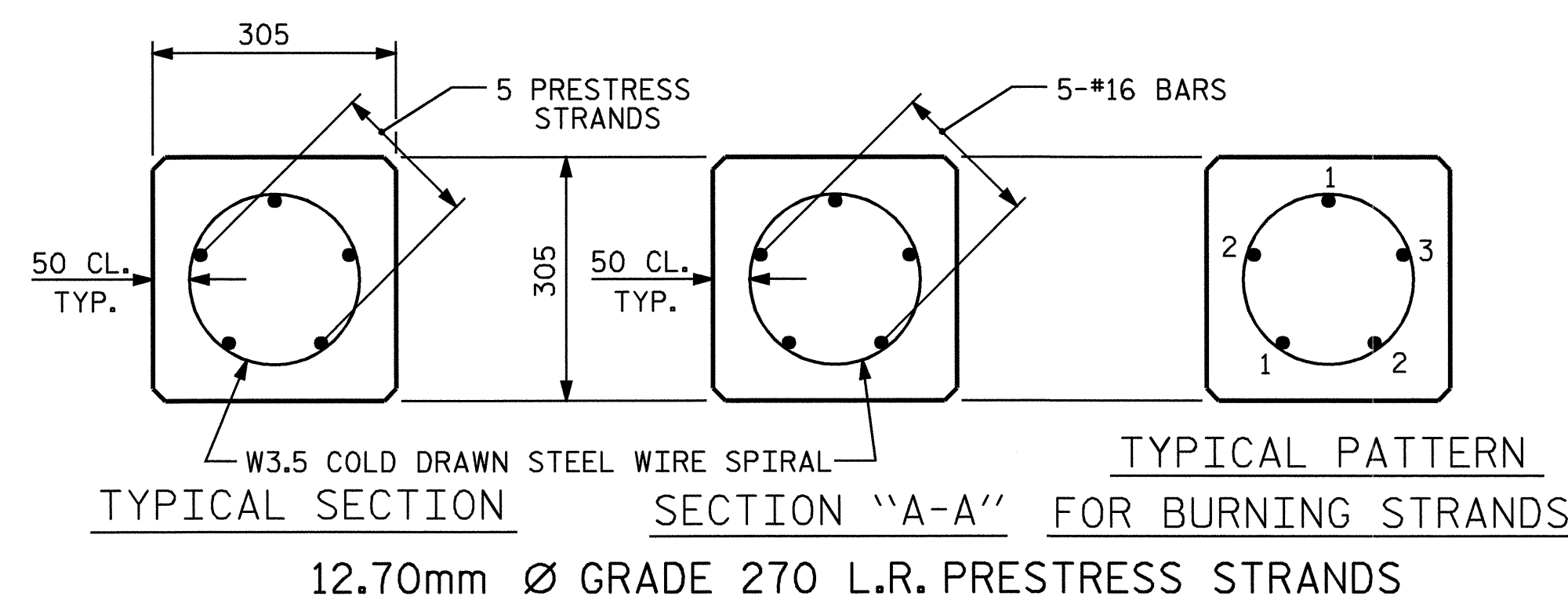
| QUANTITIES FOR ONE 305mm PRESTRESSED PILE |                            |                |                   |          |                   |          |
|---|----------------------------|----------------|-------------------|----------|-------------------|----------|
| LENGTH<br>m                               | CONCRETE<br>m <sup>3</sup> | PILE WT.<br>kg | ONE PICK-UP POINT |          | TWO PICK-UP POINT |          |
|   |                            |                | 0.300L m          | 0.700L m | 0.207L m          | 0.586L m |
| 7.5                                       | 0.70                       | 1680           | 2.25              | 5.25     |                   |          |
| 9.0                                       | 0.84                       | 2020           | 2.70              | 6.30     |                   |          |
| 10.5                                      | 0.98                       | 2350           | 3.15              | 7.35     |                   |          |
| 12.0                                      | 1.12                       | 2690           | 3.60              | 8.40     |                   |          |
| 13.5                                      | 1.26                       | 3030           | 4.05              | 9.45     |                   |          |
| 15.0                                      | 1.40                       | 3360           | 4.50              | 10.50    |                   |          |
| 16.5                                      | 1.53                       | 3680           |                   |          | 3.42              | 9.67     |
| 18.0                                      | 1.67                       | 4010           |                   |          | 3.73              | 10.55    |
| 19.5                                      | 1.81                       | 4350           |                   |          | 4.04              | 11.43    |
| 21.0                                      | 1.95                       | 4690           |                   |          | 4.35              | 12.31    |
| 22.5                                      | 2.09                       | 5020           |                   |          | 4.66              | 13.19    |



BUILD-UP WITHOUT DRIVING

BUILD-UP WITH DRIVING

ELEVATION



PROJECT NO. R-513BB  
ROBESON COUNTY  
 STATION: 179+16.663 -L-

| STATE OF NORTH CAROLINA<br>DEPARTMENT OF TRANSPORTATION<br>RALEIGH |     |       |     |       | SHEET NO.<br>5-25   |
|--|-----|-------|-----|-------|---------------------|
| STANDARD<br>305mm PRESTRESSED<br>CONCRETE PILE                     |     |       |     |       | TOTAL SHEETS<br>312 |
| REVISIONS  |     |       |     |       | NO.                 |
| NO.  | BY: | DATE: | NO. | DATE: |                     |
| 1  |     |       | 3   |       |                     |
| 2  |     |       | 4   |       |                     |

|                           |                      |
|---------------------------|----------------------|
| ASSEMBLED BY : T.H. FANG  | DATE : 2/27/04       |
| CHECKED BY : W.K. FISCHER | DATE : 3/2/04        |
| DRAWN BY : FCJ 7/88       | REV. 5/16/97 EEM/RGW |
| CHECKED BY : CRK 3/89     | REV. 7/17/98 RWW/LES |
|                           | REV. 8/16/99 RWW/LES |