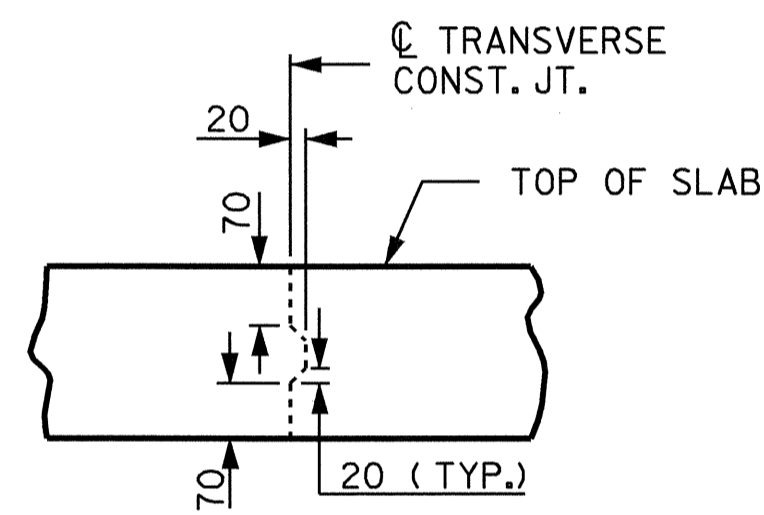


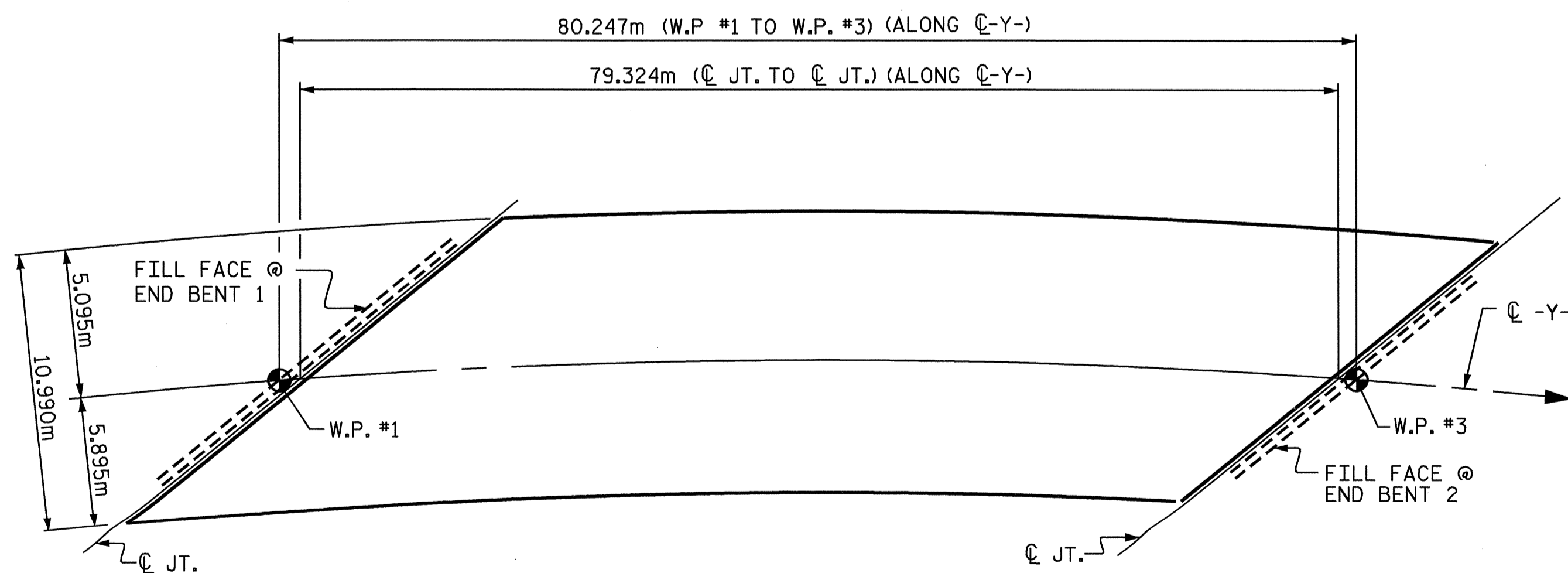
**POURING SEQUENCE**

CONCRETE QUANTITY BREAKDOWN		
POUR 1	POUR 2	POUR 3
15.0 CUBIC METERS	15.0 CUBIC METERS	186.3 CUBIC METERS



**TRANSVERSE CONSTRUCTION JOINT DETAIL**

SLAB REINFORCING STEEL SHALL BE CONTINUOUS THRU JOINT



LAYOUT FOR COMPUTING AREA OF REINFORCED CONCRETE DECK SLAB (SQ. METER = 871.8)

ASSEMBLED BY : N. Q. TRAN	DATE : 7/28/03
CHECKED BY : M.A. ALLEN	DATE : 2/04
DRAWN BY : JMB 5/87	REV. 5/16/97 EEM/RGW
CHECKED BY : SJD 9/87	

23-MAR-2004 08:01  
W:\SquadM\0513bb\str2\nttran\lcomB\0513bb02bm.dgn  
ntran

**REINFORCING BAR SCHEDULE**

BAR NO	SIZE	TYPE	LENGTH	WEIGHT	BAR NO	SIZE	TYPE	LENGTH	WEIGHT		
* A1	453	16	STR	10840	7621	A221	4	16	STR	10260	64
A2	453	16	STR	10840	7621	A222	4	16	STR	9680	60
* A3	6	19	STR	6000	80	A223	4	16	STR	9080	56
A4	6	19	STR	6000	80	A224	4	16	STR	8480	53
* A101	4	16	STR	10300	64	A225	4	16	STR	7900	49
* A102	4	16	STR	9740	60	A226	4	16	STR	7300	45
* A103	4	16	STR	9180	57	A227	4	16	STR	6700	42
* A104	4	16	STR	8620	54	A228	4	16	STR	6120	38
* A105	4	16	STR	8060	50	A229	4	16	STR	5520	34
* A106	4	16	STR	7520	47	A230	4	16	STR	4920	31
* A107	4	16	STR	6960	43	A231	4	16	STR	4340	27
* A108	4	16	STR	6400	40	A232	4	16	STR	3740	23
* A109	4	16	STR	5840	36	A233	4	16	STR	3140	19
* A110	4	16	STR	5300	33	A234	4	16	STR	2540	16
* A111	4	16	STR	4740	29	A235	4	16	STR	1960	12
* A112	4	16	STR	4180	26	A236	4	16	STR	1360	8
* A113	4	16	STR	3620	22	A237	4	16	STR	760	5
* A114	4	16	STR	3080	19	* B1	140	13	STR	8240	1147
* A115	4	16	STR	2520	16	* B2	78	19	STR	5640	983
* A116	4	16	STR	1980	12	* B3	140	13	STR	7800	1085
* A117	4	16	STR	1420	9	B4	235	16	STR	16460	6003
* A118	4	16	STR	860	5	* G1	1	16	STR	16320	25
* A121	4	16	STR	10260	64	* G2	1	16	STR	15220	24
* A122	4	16	STR	9680	60	* K1	6	16	1	2760	26
* A123	4	16	STR	9080	56	* K2	6	16	2	2760	26
* A124	4	16	STR	8480	53	* K3	9	16	STR	3800	53
* A125	4	16	STR	7900	49	* K4	6	16	1	2680	25
* A126	4	16	STR	7300	45	* K5	6	16	2	2720	25
* A127	4	16	STR	6700	42	K6	9	16	STR	3540	49
* A128	4	16	STR	6120	38	* S1	72	13	3	1340	96
* A129	4	16	STR	5520	34	REINFORCING STEEL	kg			15,010	
* A130	4	16	STR	4920	31	* EPOXY COATED REINFORCING STEEL	kg			12,367	
* A131	4	16	STR	4340	27						
* A132	4	16	STR	3740	23						
* A133	4	16	STR	3140	19						
* A134	4	16	STR	2540	16						
* A135	4	16	STR	1960	12						
* A136	4	16	STR	1360	8						
* A137	4	16	STR	760	5						
A201	4	16	STR	10300	64						
A202	4	16	STR	9740	60						
A203	4	16	STR	9180	57						
A204	4	16	STR	8620	54						
A205	4	16	STR	8060	50						
A206	4	16	STR	7520	47						
A207	4	16	STR	6960	43						
A208	4	16	STR	6400	40						
A209	4	16	STR	5840	36						
A210	4	16	STR	5300	33						
A211	4	16	STR	4740	29						
A212	4	16	STR	4180	26						
A213	4	16	STR	3620	22						
A214	4	16	STR	3080	19						
A215	4	16	STR	2520	16						
A216	4	16	STR	1980	12						
A217	4	16	STR	1420	9						
A218	4	16	STR	860	5						

\* EPOXY COATED REINFORCING STEEL

**GROOVING BRIDGE FLOORS**

BRIDGE DECK ***	899.2 SQ.METER
TOTAL	899.2 SQ.METER

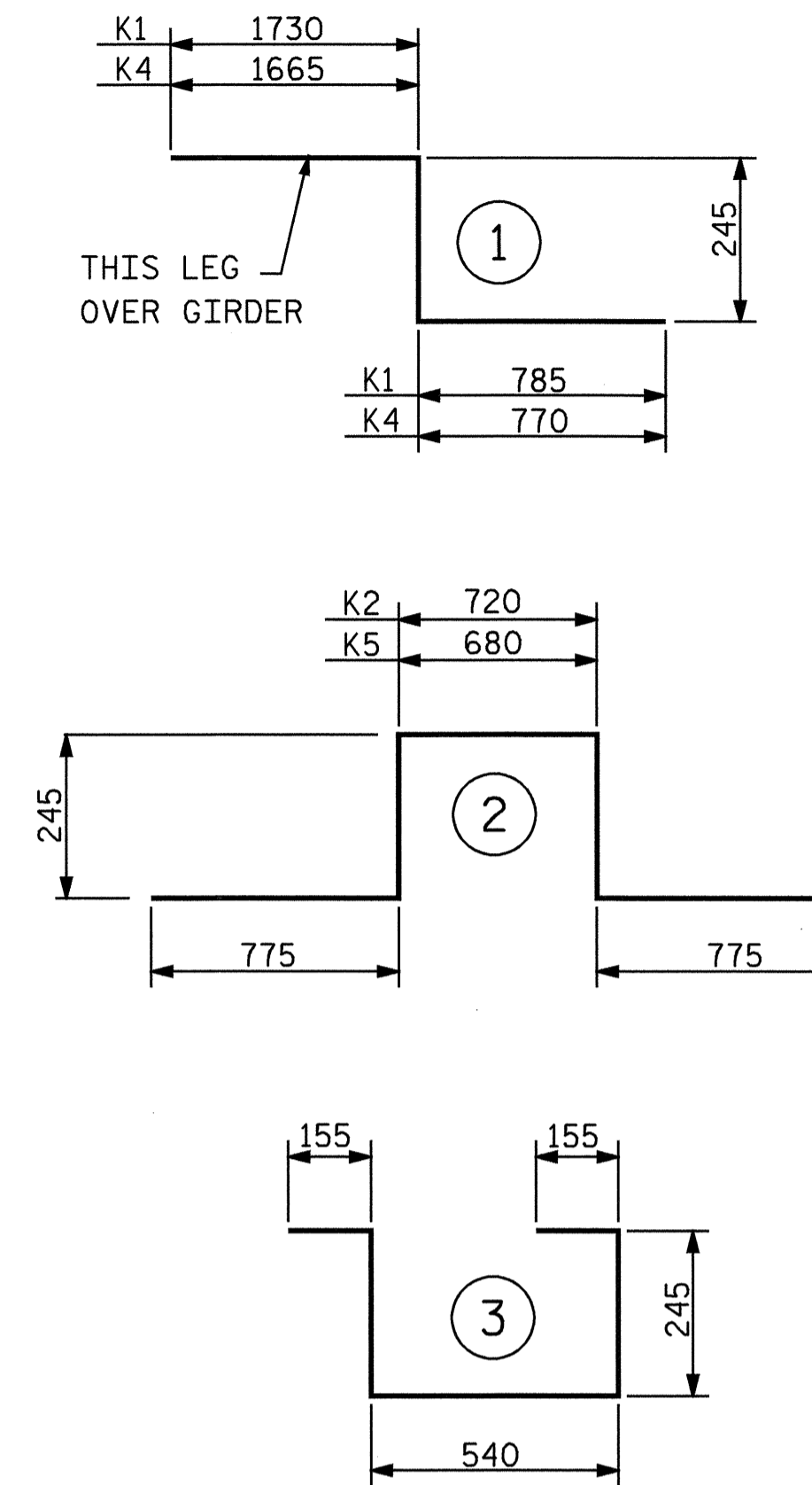
\*\*\* INCLUDES QUANTITY ON APPROACH SLABS

SUPERSTRUCTURE REINFORCING STEEL LENGTHS ARE BASED ON THE FOLLOWING MINIMUM SPLICE LENGTHS

BAR SIZE	SUPERSTRUCTURE EXCEPT APPROACH SLABS, PARAPET, AND BARRIER RAIL		APPROACH SLABS		PARAPET AND BARRIER RAIL
	EPOXY COATED	UNCOATED	EPOXY COATED	UNCOATED	
#13	610	540	610	540	840
#16	770	660	770	660	1050
#19	920	790	1190	790	1330
#22	1580	1060			
#25	2080	1390			

*Professional Engineer Seal*  
Ting H. Jang  
3/23/04

**BAR TYPES**



ALL BAR DIMENSIONS ARE OUT TO OUT

**SUPERSTRUCTURE BILL OF MATERIAL**

	CLASS AA CONCRETE (CU.METER)	REINFORCING STEEL (kg)	EPOXY COATED REINFORCING STEEL (kg)
SPAN A-B	216.6	15,010	12,367
TOTALS**	216.3	15,010	12,367

\*\* QUANTITIES FOR BARRIER RAIL ARE NOT INCLUDED

PROJECT NO. R-513BB  
ROBESON COUNTY  
STATION: 209+17.263 -L-

STATE OF NORTH CAROLINA  
DEPARTMENT OF TRANSPORTATION  
RALEIGH  
STANDARD  
SUPERSTRUCTURE  
BILL OF MATERIAL

REVISIONS						SHEET NO. 5-49
NO.	BY:	DATE:	NO.	BY:	DATE:	
1			3			TOTAL SHEETS 312
2			4			

STR. 2

STD. NO. BOM1SM