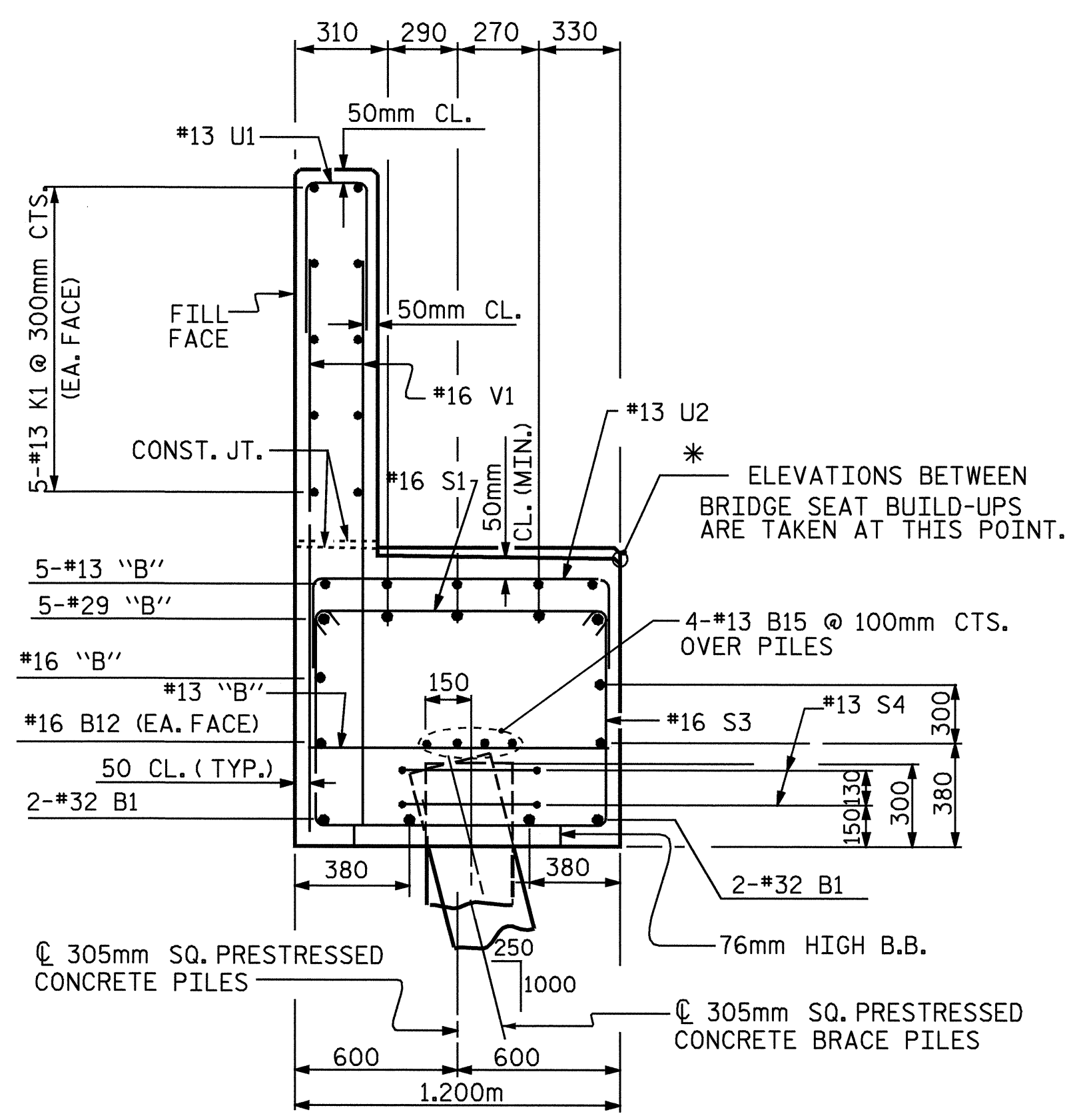
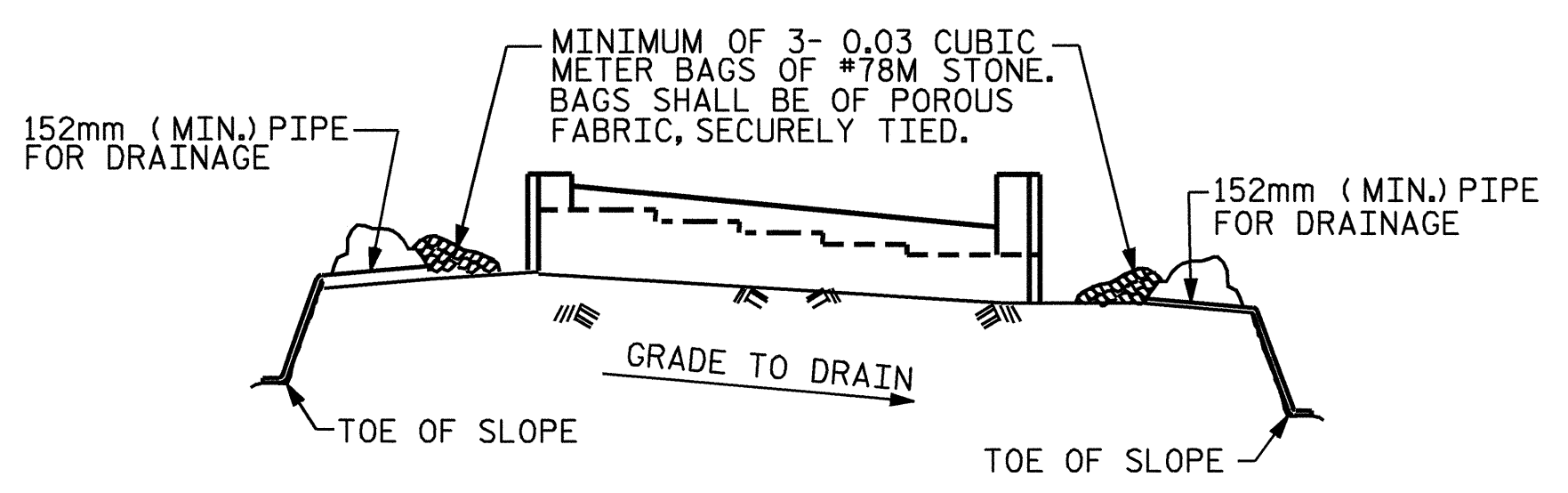


SECTION A-A



SECTION B-B

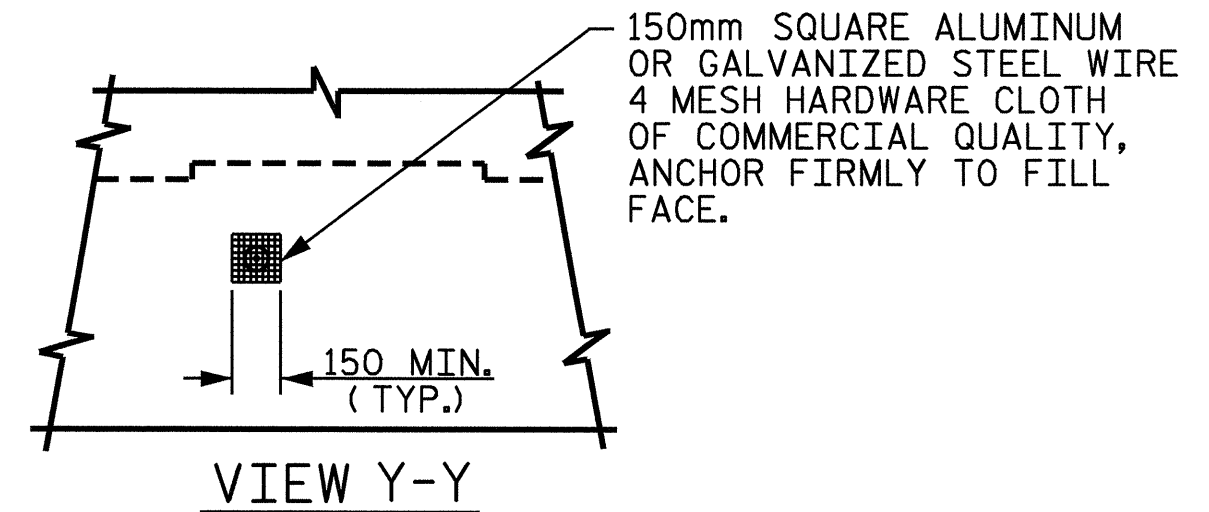


BAGGED STONE AND PIPE SHALL BE PLACED IMMEDIATELY AFTER COMPLETION OF END BENT EXCAVATION. PIPE MAY BE EITHER CONCRETE, CORRUGATED STEEL, CORRUGATED ALUMINUM ALLOY, OR CORRUGATED PLASTIC. PERFORATED PIPE WILL NOT BE ALLOWED.

BAGGED STONE SHALL REMAIN IN PLACE UNTIL THE ENGINEER DIRECTS THAT IT BE REMOVED. THE CONTRACTOR SHALL REMOVE AND DISPOSE OF SILT ACCUMULATIONS AT BAGGED STONE WHEN SO DIRECTED BY THE ENGINEER. BAGS SHALL BE REMOVED AND REPLACED WHENEVER THE ENGINEER DETERMINES THAT THEY HAVE DETERIORATED AND LOST THEIR EFFECTIVENESS.

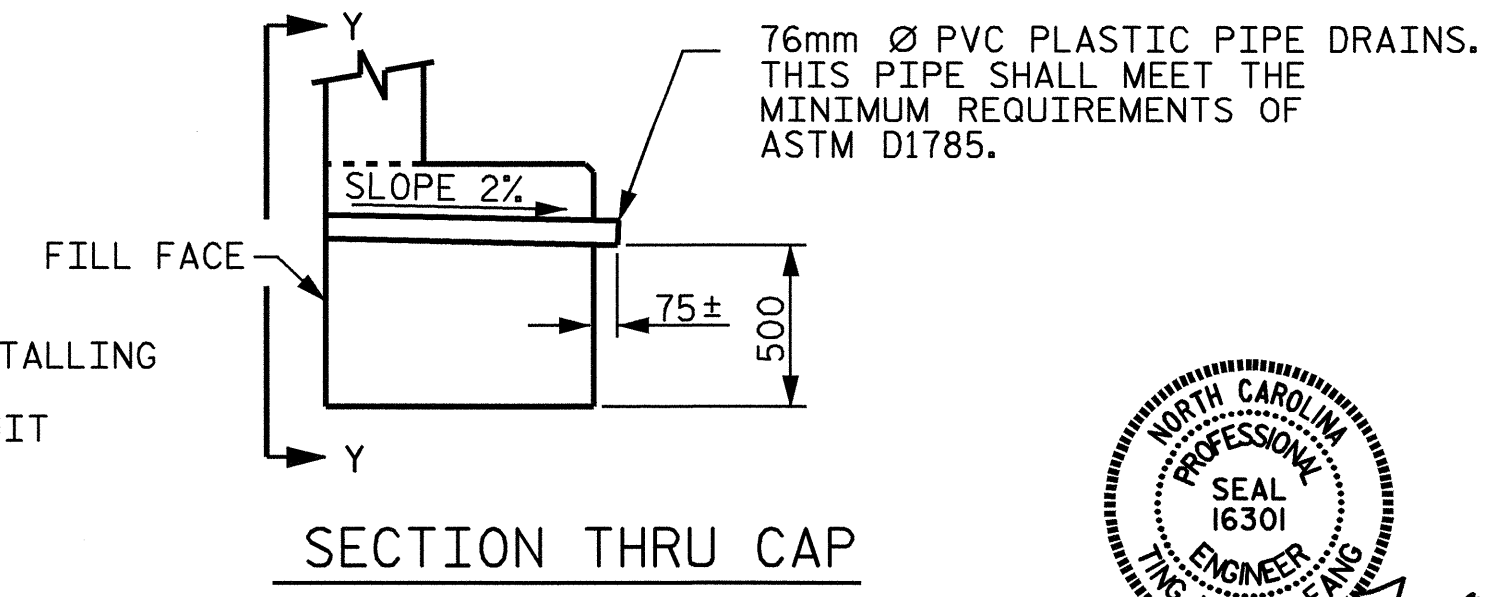
NO SEPARATE PAYMENT WILL BE MADE FOR THIS WORK AND THE ENTIRE COST OF THIS WORK SHALL BE INCLUDED IN THE UNIT CONTRACT PRICE BID FOR THE SEVERAL PAY ITEMS.

TEMPORARY DRAINAGE AT END BENT



NOTE: NO SEPARATE PAYMENT WILL BE MADE FOR FURNISHING AND INSTALLING THE PVC PIPE DRAINS, HARDWARE CLOTH AND FASTENERS. THE ENTIRE COST OF THIS WORK SHALL BE INCLUDED IN THE UNIT CONTRACT PRICE BID FOR THE SEVERAL PAY ITEMS.

PIPE DRAIN DETAILS



SECTION THRU CAP

BAR TYPES

ALL DIMENSIONS ARE OUT TO OUT

1: HK. 140, 140, HK. 1100, 880, 650, S3, S2

2: 138, 143, 200, 3440, 3660, H1, H2

3: 138, 143, 200, 2680, 2440, H3, H4

4: 140, 1100, 140, HK., HK., 580, 680, 300, 300

5: 140, 140, HK., 1100, 880, 650, S3, S2

6: 380mm LAP, 510

7: HK., 200, 630, 330

8: 580, 680, 300, 300

9: 460, 740, U1, U2

425	10195	B1
375	6905	B2
375	7125	B3
375	7405	B4
375	7905	B6
375	13765	B7
375	13505	B8
375	13265	B9
375	13005	B10
375	12745	B11

BILL OF MATERIAL				
END BENT NO. 2				
BAR	NO.	SIZE	TYPE	WEIGHT
B1	8	32	1	10620
B2	1	29	1	7280
B3	1	29	1	7500
B4	1	29	1	7780
B5	1	29	1	8020
B6	1	29	1	8280
B7	1	29	1	14140
B8	1	29	1	13880
B9	1	29	1	13680
B10	1	29	1	13380
B11	1	29	1	13120
B12	4	16	STR	9440
B13	1	16	STR	5100
B14	1	16	STR	6100
B15	12	13	STR	6480
B16	5	13	STR	4200
B17	1	13	STR	2620
B18	1	13	STR	2860
B19	1	13	STR	3120
B20	1	13	STR	3400
B21	1	13	STR	3620
B22	18	13	STR	1100
H1	11	16	2	3640
H2	11	16	2	3840
H3	10	16	3	2880
H4	10	16	3	2640
H5	8	13	STR	1220
K1	30	13	STR	6480
S1	58	16	4	1380
S2	36	16	5	2680
S3	22	16	5	3140
S4	20	13	6	1980
S5	3	19	7	1160
S6	1	19	8	2540
U1	52	13	9	1680
U2	16	13	9	2020
V1	104	16	STR	2180
V2	32	16	STR	2820
V3	24	16	STR	2560
REINFORCING STEEL				kg. 2857
CLASS A CONCRETE BREAKDOWN				
POUR 1: (CAP AND LOWER PORTION OF WINGS) AND LESS WING PILE BLOCK				CU. METERS 21.3
POUR 2: (BACKWALL AND UPPER PORTION OF WINGS)				CU. METERS 12.0
TOTAL				CU. METERS 33.3
305mm SQ. PRESTRESSED CONCRETE PILES.				
NO. 11	METERS			198

NOTE: CONCRETE DISPLACED BY CONCRETE PILES HAS BEEN DEDUCTED FROM CONCRETE QUANTITY.

PROJECT NO. R-513BB
ROBESON COUNTY
 STATION: 209+17.263 -L-
 SHEET 3 OF 3

STATE OF NORTH CAROLINA
 DEPARTMENT OF TRANSPORTATION
 RALEIGH
SUBSTRUCTURE
END BENT 2

REVISIONS					SHEET NO.
NO.	BY:	DATE:	NO.	BY:	DATE:
1			3		
2			4		

TOTAL SHEETS 312

