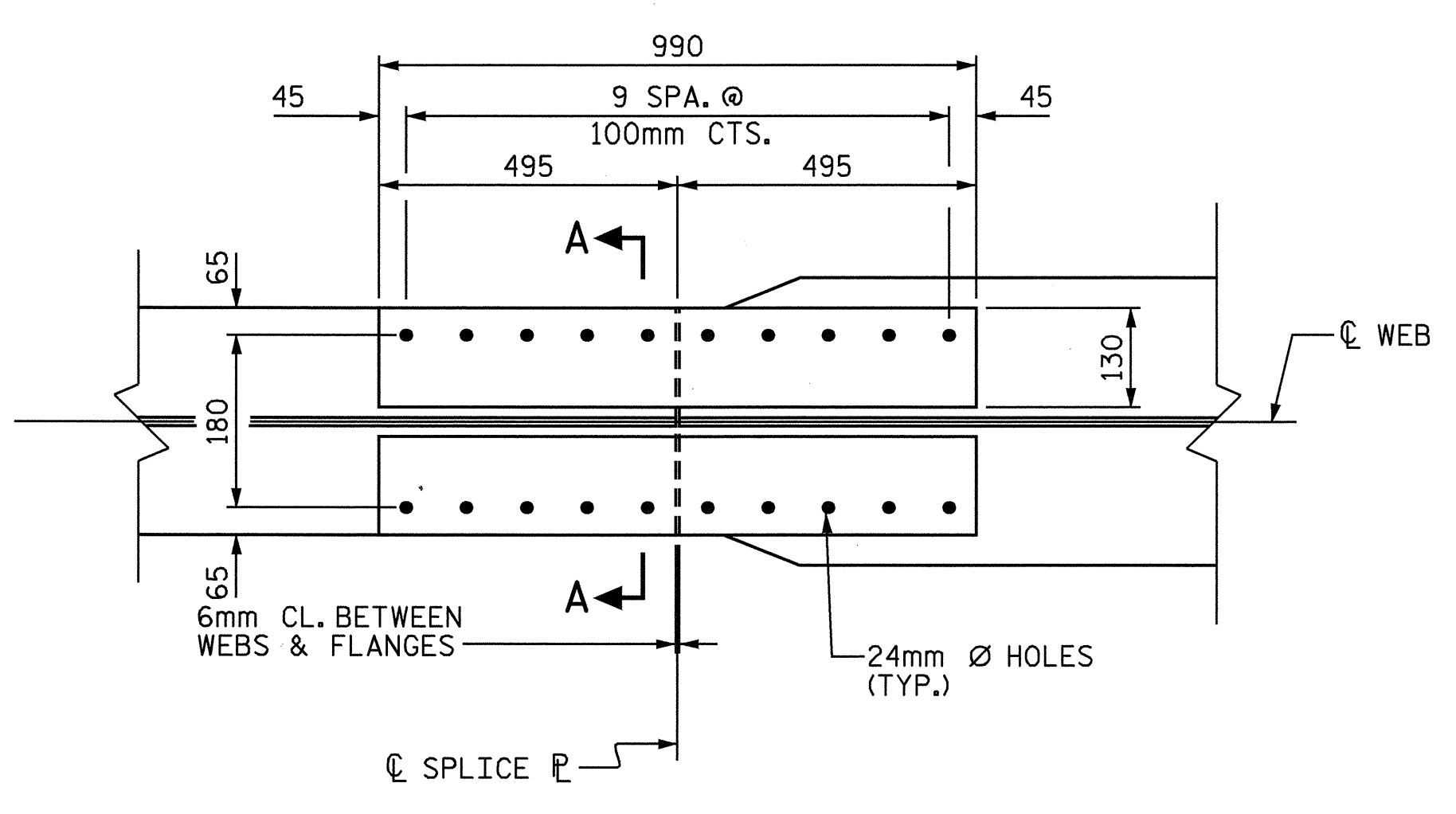


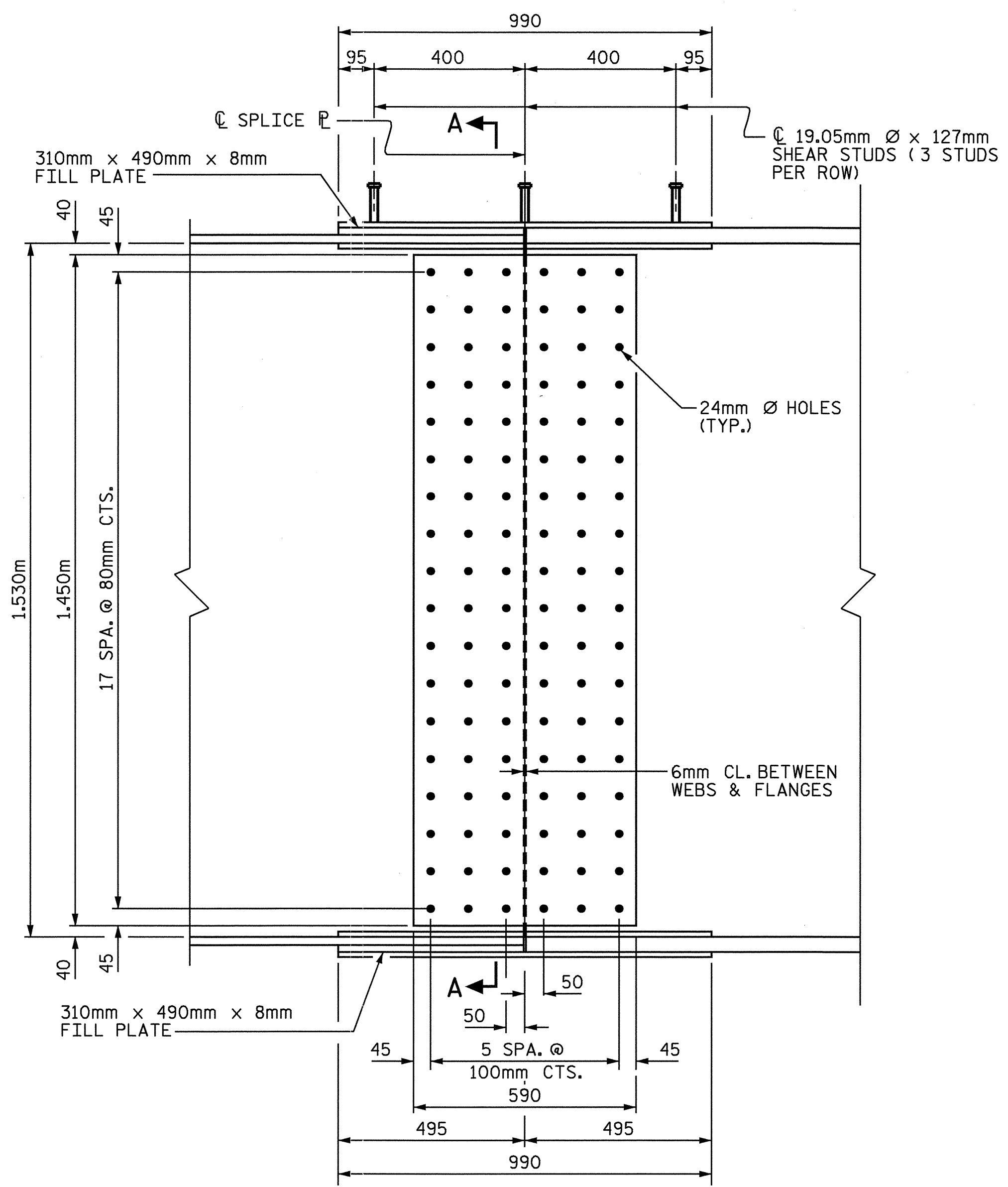
**PLAN OF TOP FLANGE**

TOP OF TOP FLANGE SHOWN  
BOTTOM PLATE FOR BOTTOM FLANGE SIMILAR EXCEPT WITHOUT SHEAR STUDS.

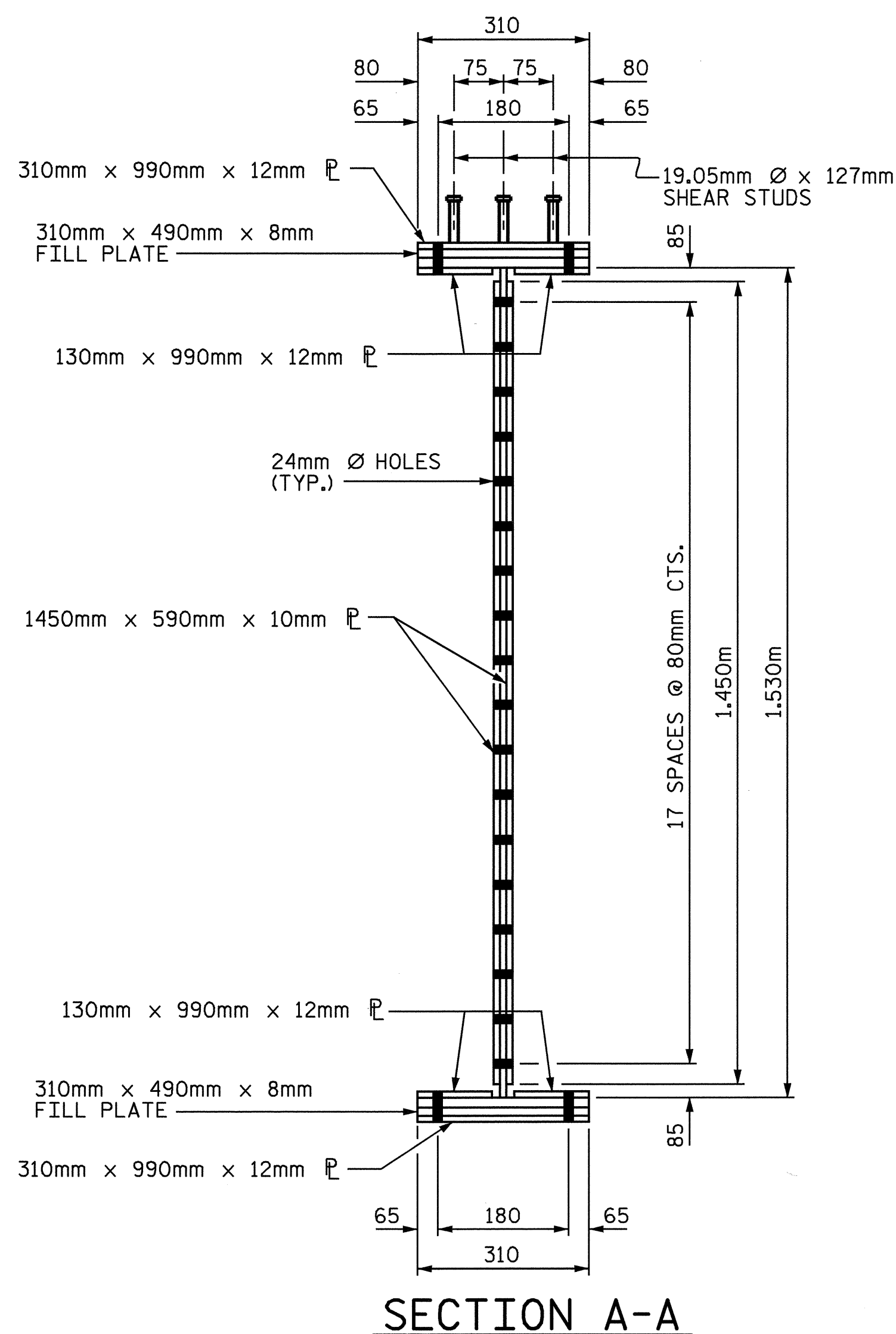


**PLAN OF BOTTOM FLANGE**

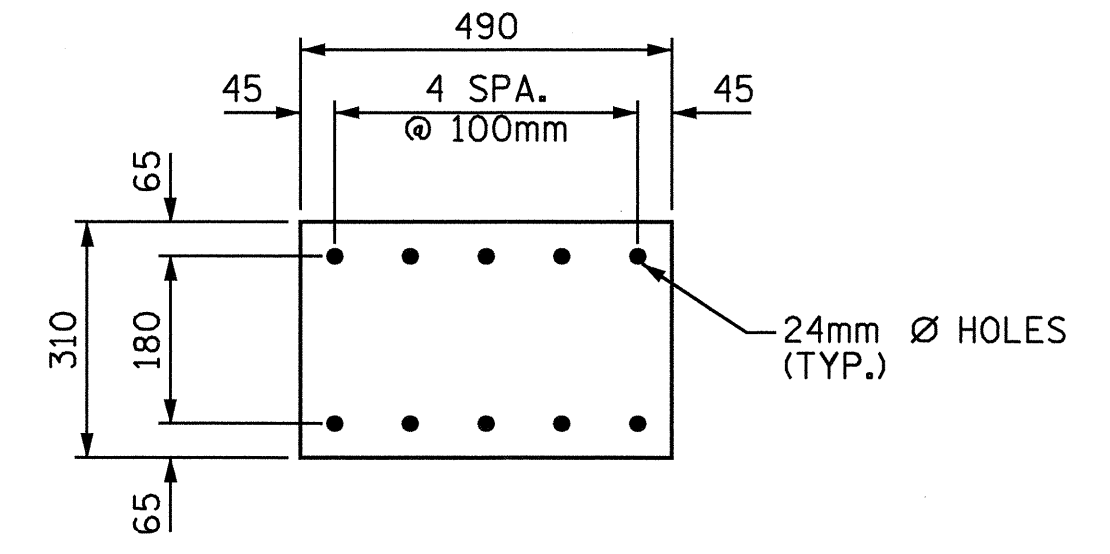
TOP OF BOTTOM FLANGE SHOWN  
BOTTOM PLATES FOR TOP FLANGE SAME.



**ELEVATION**



**SECTION A-A**



**FILL PLATE**

TOP AND BOTTOM PLATES SAME

**NOTES**

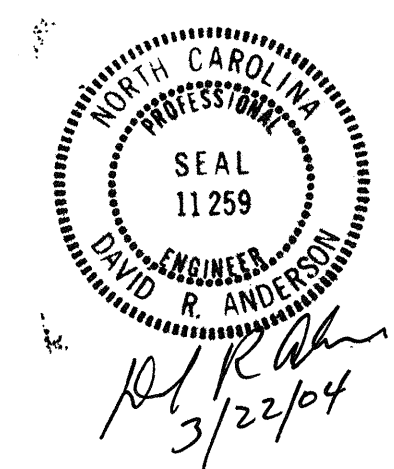
- ALL STRUCTURAL STEEL SHALL BE AASHTO M270 GRADE 345W STEEL AND PAINTED IN ACCORDANCE WITH SYSTEM 4 OF ARTICLE 442-7 OF THE STANDARD SPECIFICATIONS UNLESS OTHERWISE NOTED ON THE PLANS.
- ALL DIMENSIONS SHOWN ARE HORIZONTAL OR VERTICAL, UNLESS OTHERWISE NOTED.
- ALL FIELD CONNECTIONS TO BE 22.23mm DIA. HIGH STRENGTH BOLTS UNLESS OTHERWISE NOTED.
- TENSION ON THE AASHTO M164 BOLTS SHALL BE CALIBRATED USING DIRECT TENSION INDICATOR WASHERS IN ACCORDANCE WITH ARTICLE 440-10 OF THE STANDARD SPECIFICATIONS.
- BEARING STIFFENERS ARE TO BE PLACED NORMAL TO THE WEB OF THE GIRDER AT END BENTS 1 & 2 AND SHALL BE PLUMB.
- BEARING STIFFENERS ARE TO BE PLACED ALONG SKEW AT BENT 1 AND SHALL BE PLUMB.
- SHOP SPLICES ARE PERMITTED TO LIMIT THE MAXIMUM REQUIRED FLANGE PIECE LENGTHS TO 18 METERS AND WEB PIECE LENGTHS TO 14 METERS. PERMITTED FLANGE AND WEB SHOP SPLICES SHALL NOT BE LOCATED WITHIN 4.5 METERS OF MAXIMUM DEAD LOAD DEFLECTION (NOR WITHIN 4.5 METERS OF INTERMEDIATE BEARINGS OF CONTINUOUS UNITS). KEEP 600mm MINIMUM BETWEEN WEB AND FLANGE SHOP SPLICES. KEEP 150mm MINIMUM BETWEEN CONNECTOR PLATE OR TRANSVERSE STIFFENER WELDS AND WEB OR FLANGE SHOP SPLICES.
- STUDS ON GIRDERS MAY BE SHIFTED UP TO 25mm IF NECESSARY TO CLEAR FLANGE SPLICE WELD.
- ENDS OF GIRDERS SHALL BE PLUMB.

PROJECT NO. R-513C  
ROBESON COUNTY  
STATION: 256+58.326 -L-

SHEET 3 OF 3

STATE OF NORTH CAROLINA  
DEPARTMENT OF TRANSPORTATION  
RALEIGH

**SUPERSTRUCTURE  
STRUCTURAL STEEL**



REVISIONS						SHEET NO. 9-75
NO.	BY:	DATE:	NO.	BY:	DATE:	
1			3			TOTAL SHEETS 312
2			4			

DRAWN BY : T.A. WALTER DATE : 7/12/00  
CHECKED BY : N.Q. TRAN DATE : 10/11/02

**BOLTED FIELD SPLICE DETAILS**