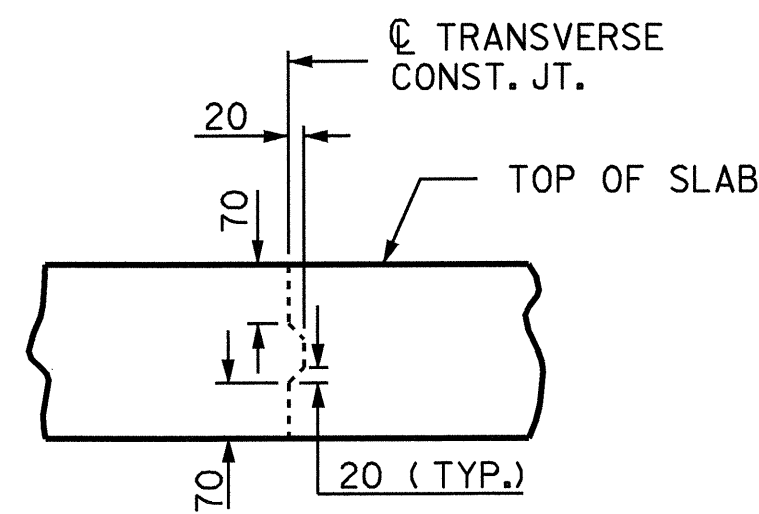


POURING SEQUENCE

CONCRETE QUANTITY BREAKDOWN	
POUR 1	POUR 2
77.2 CUBIC METERS	185.9 CUBIC METERS

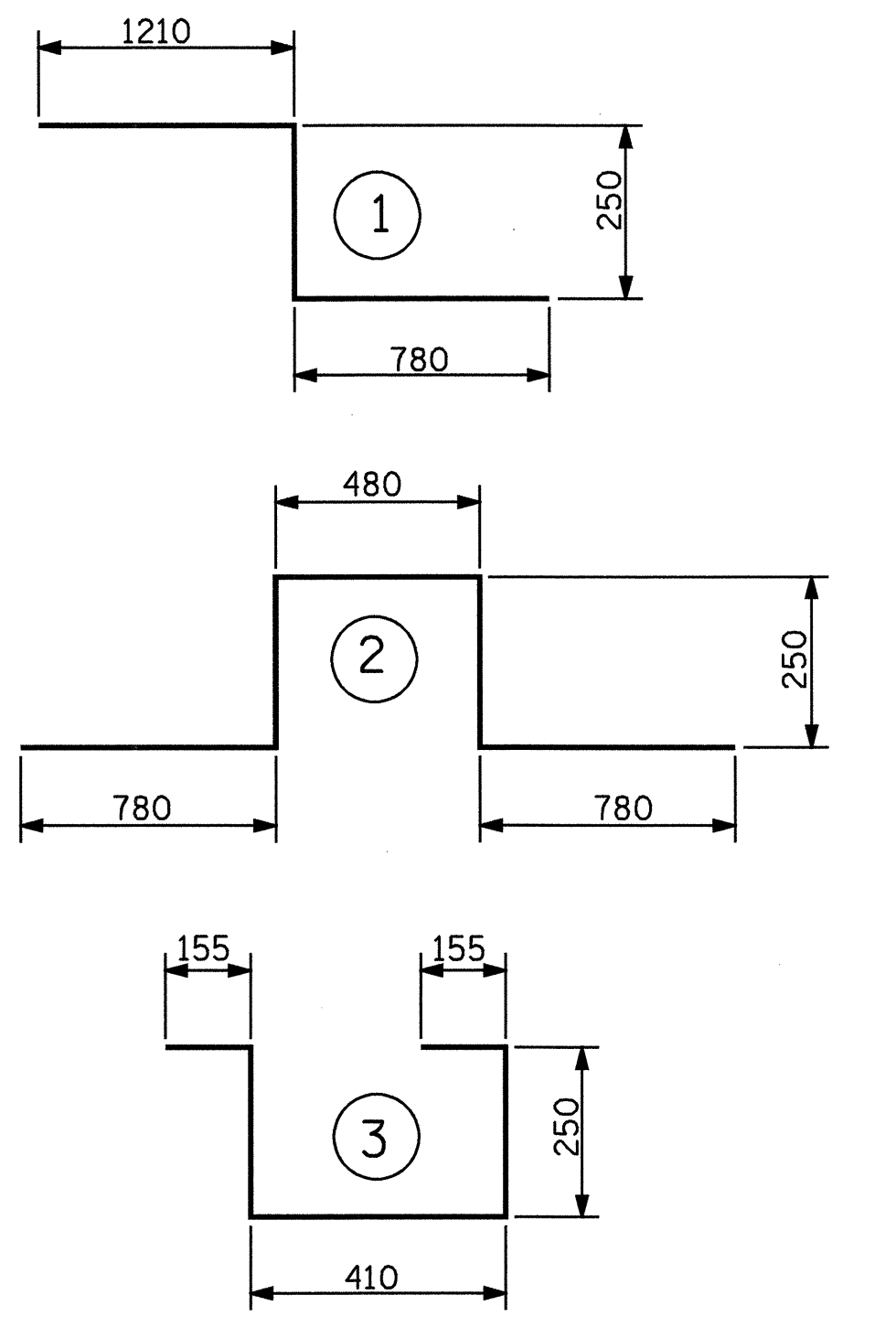


TRANSVERSE CONSTRUCTION JOINT DETAIL
 SLAB REINFORCING STEEL SHALL BE CONTINUOUS THRU JOINT

REINFORCING BAR SCHEDULE

BAR NO.	NO.	SIZE	TYPE	LENGTH	WEIGHT
* A1	379	16	STR	16440	9670
A2	379	16	STR	16440	9670
* A3	176	13	STR	860	150
* A101	2	16	STR	13400	42
* A102	2	16	STR	10300	32
* A103	2	16	STR	7220	22
* A104	2	16	STR	4120	13
* A105	2	16	STR	1040	3
A201	2	16	STR	13400	42
A202	2	16	STR	10300	32
A203	2	16	STR	7220	22
A204	2	16	STR	4120	13
A205	2	16	STR	1040	3
* B1	228	13	STR	7860	1781
* B2	143	19	STR	18000	5753
B3	315	16	STR	12900	6307
* B4	12	13	STR	4260	51
* B5	24	13	STR	8220	196
* G1	2	16	STR	16460	51
* K1	8	16	1	2240	28
* K2	16	16	2	2540	63
K3	20	16	STR	2420	75
* S1	80	13	3	1220	97
REINFORCING STEEL				kg.	16164
* EPOXY COATED REINFORCING STEEL				kg.	17952
* THESE BARS ARE EPOXY COATED					

BAR TYPES



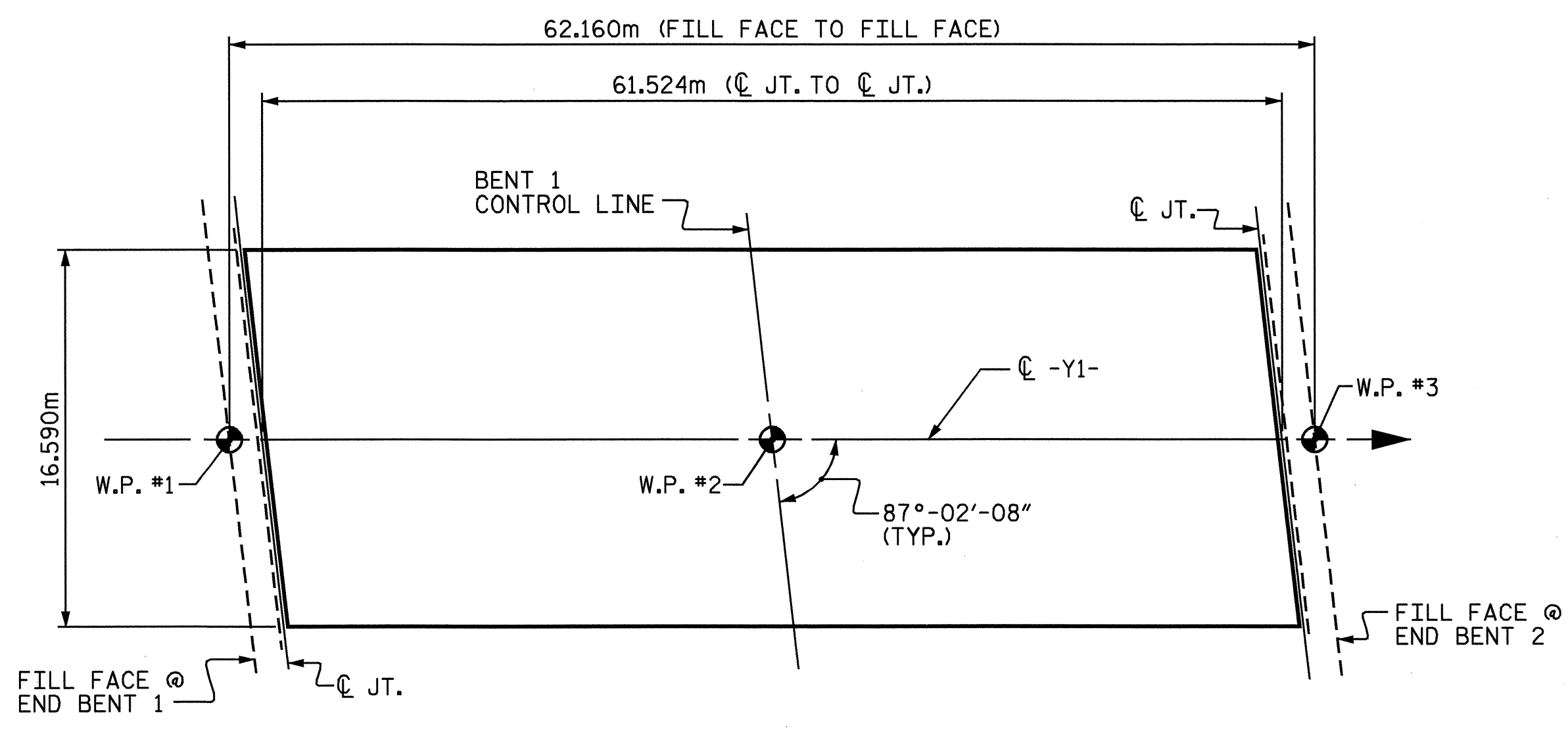
ALL BAR DIMENSIONS ARE OUT TO OUT

SUPERSTRUCTURE BILL OF MATERIAL

	CLASS AA CONCRETE (CU.METER)	REINFORCING STEEL (kg)	EPOXY COATED REINFORCING STEEL (kg)
SPAN A-B	263.1	16164	17952
CONCRETE MEDIAN	9.7	0	***
TOTALS**	272.8	16164	17952

** QUANTITIES FOR BARRIER RAIL ARE NOT INCLUDED
 *** QUANTITIES FOR CONCRETE MEDIAN INCLUDED IN SPAN A-B

SUPERSTRUCTURE REINFORCING STEEL LENGTHS ARE BASED ON THE FOLLOWING MINIMUM SPLICE LENGTHS					
BAR SIZE	SUPERSTRUCTURE EXCEPT APPROACH SLABS, PARAPET, AND BARRIER RAIL		APPROACH SLABS		PARAPET AND BARRIER RAIL
	EPOXY COATED	UNCOATED	EPOXY COATED	UNCOATED	
#13	610	540	610	540	840
#16	770	660	770	660	1050
#19	920	790	1190	790	1330
#22	1580	1060			
#25	2080	1390			

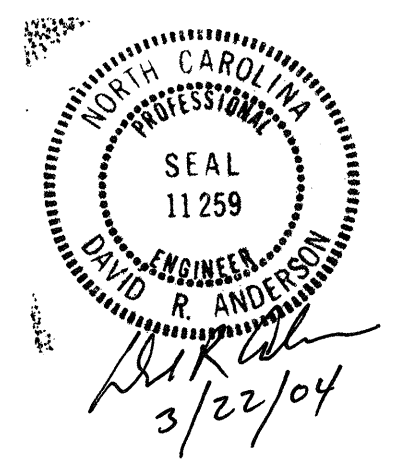


LAYOUT FOR COMPUTING AREA OF REINFORCED CONCRETE DECK SLAB
 (SQ. METER = 1017.6)

GROOVING BRIDGE FLOORS	
BRIDGE DECK Δ	1130.0 SQ.METER
TOTAL	1130.0 SQ.METER

Δ INCLUDES QUANTITY ON APPROACH SLAB

PROJECT NO. R-513C
ROBESON COUNTY
 STATION: 256+58.326 -L-



STATE OF NORTH CAROLINA
 DEPARTMENT OF TRANSPORTATION
 RALEIGH
STANDARD SUPERSTRUCTURE BILL OF MATERIAL

ASSEMBLED BY : T.A. WALTER	DATE : 7/20/00
CHECKED BY : N.Q. TRAN	DATE : 10/14/02
DRAWN BY : JMB 5/87	REV. 5/16/97 EEM/RGW
CHECKED BY : SJD 9/87	

REVISIONS						SHEET NO. 9-81
NO.	BY:	DATE:	NO.	BY:	DATE:	
1			3			TOTAL SHEETS 312
2			4			