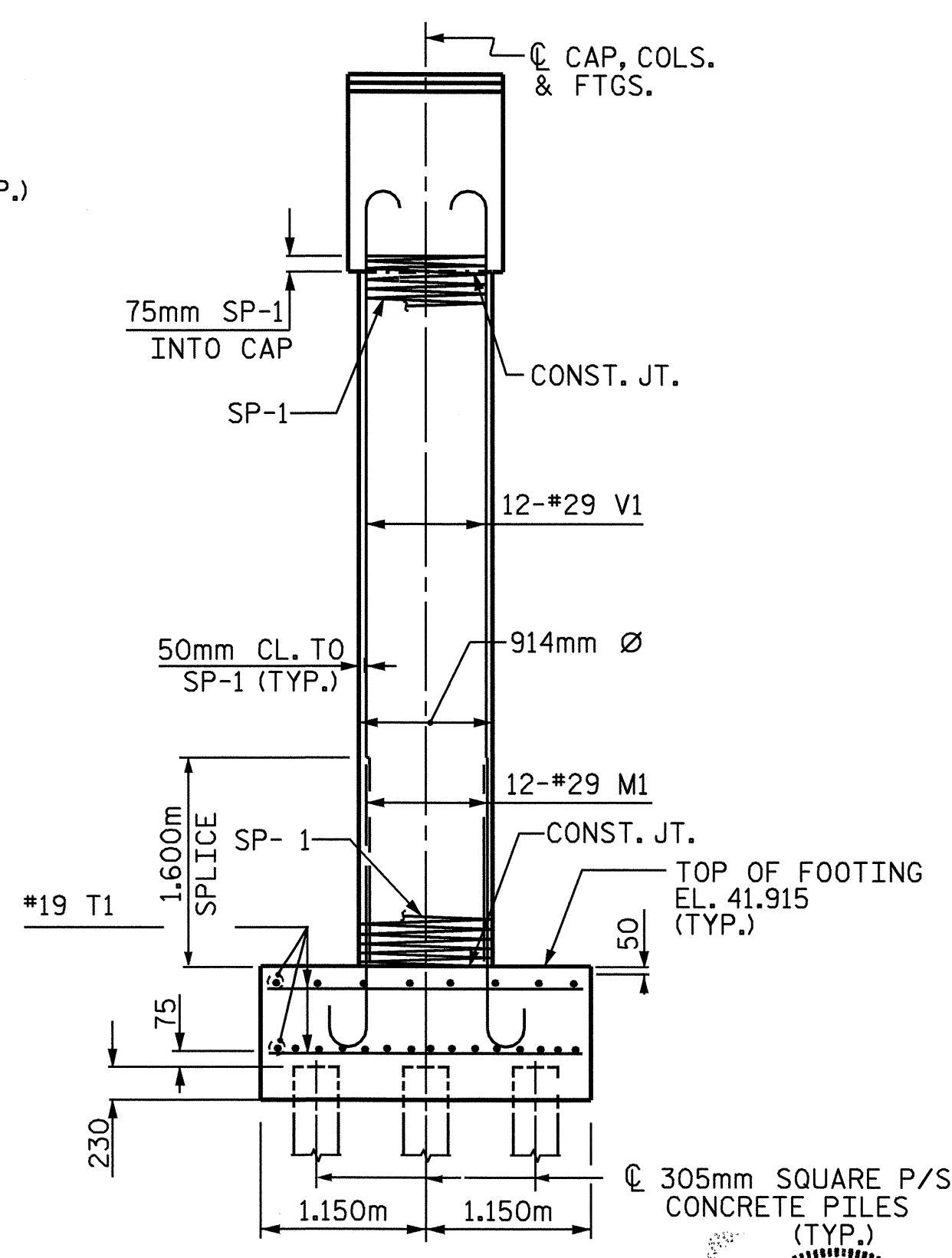
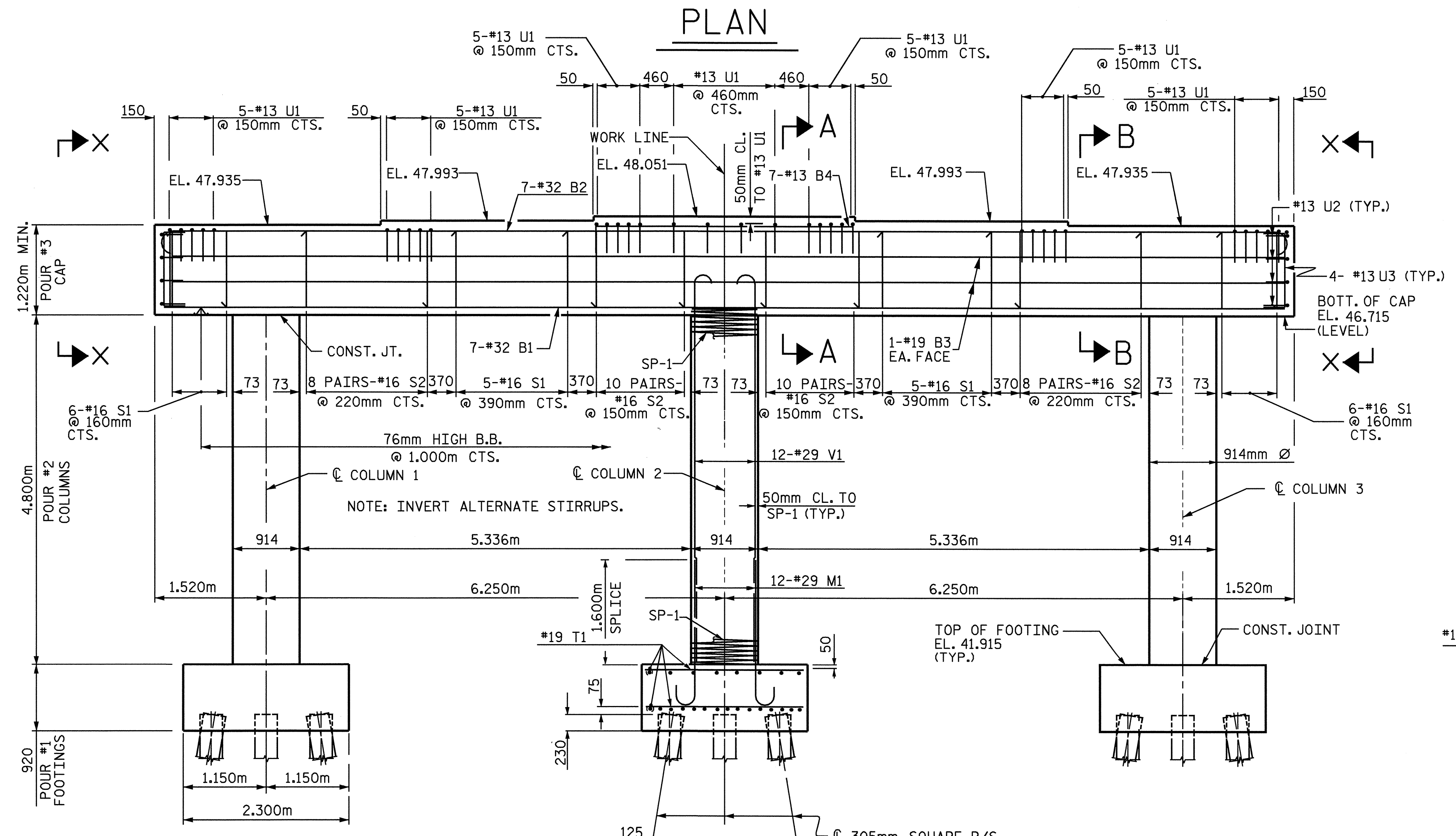
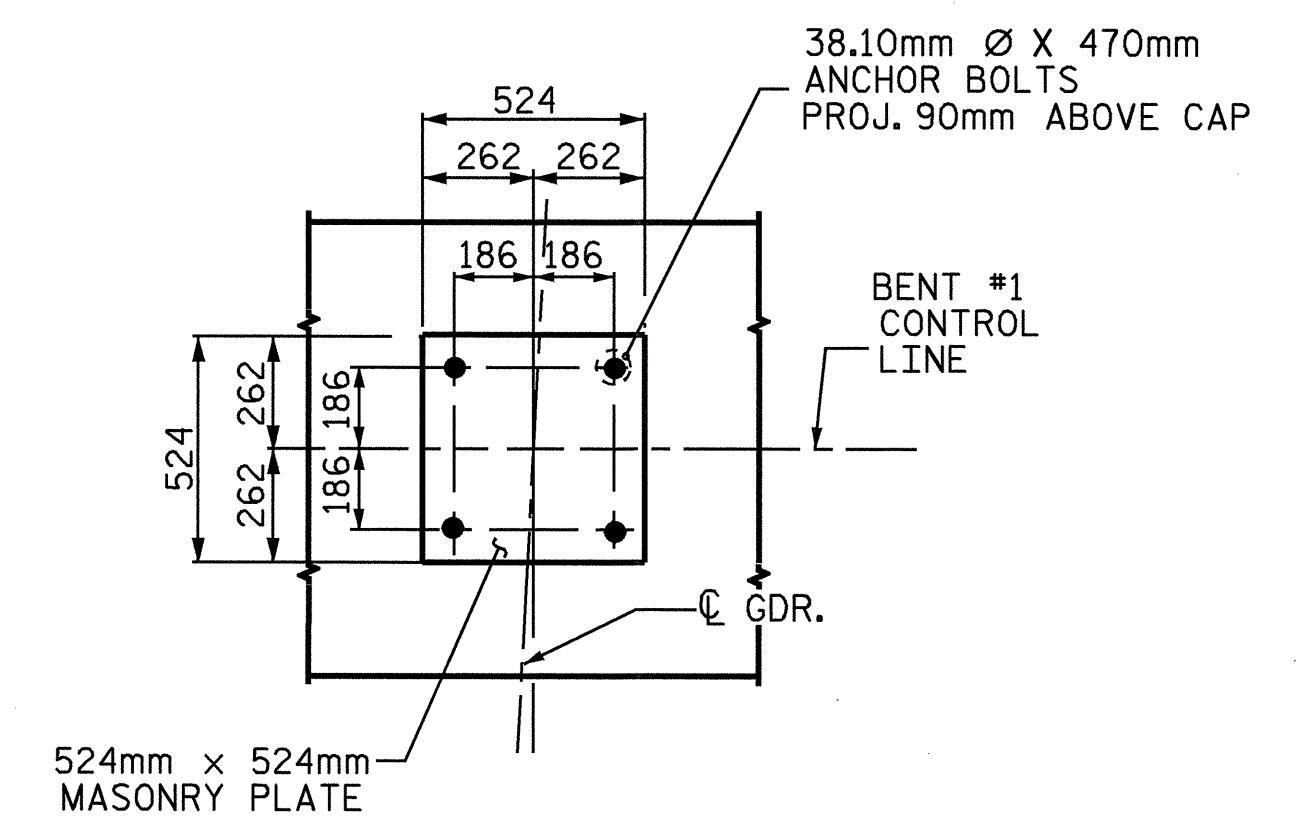
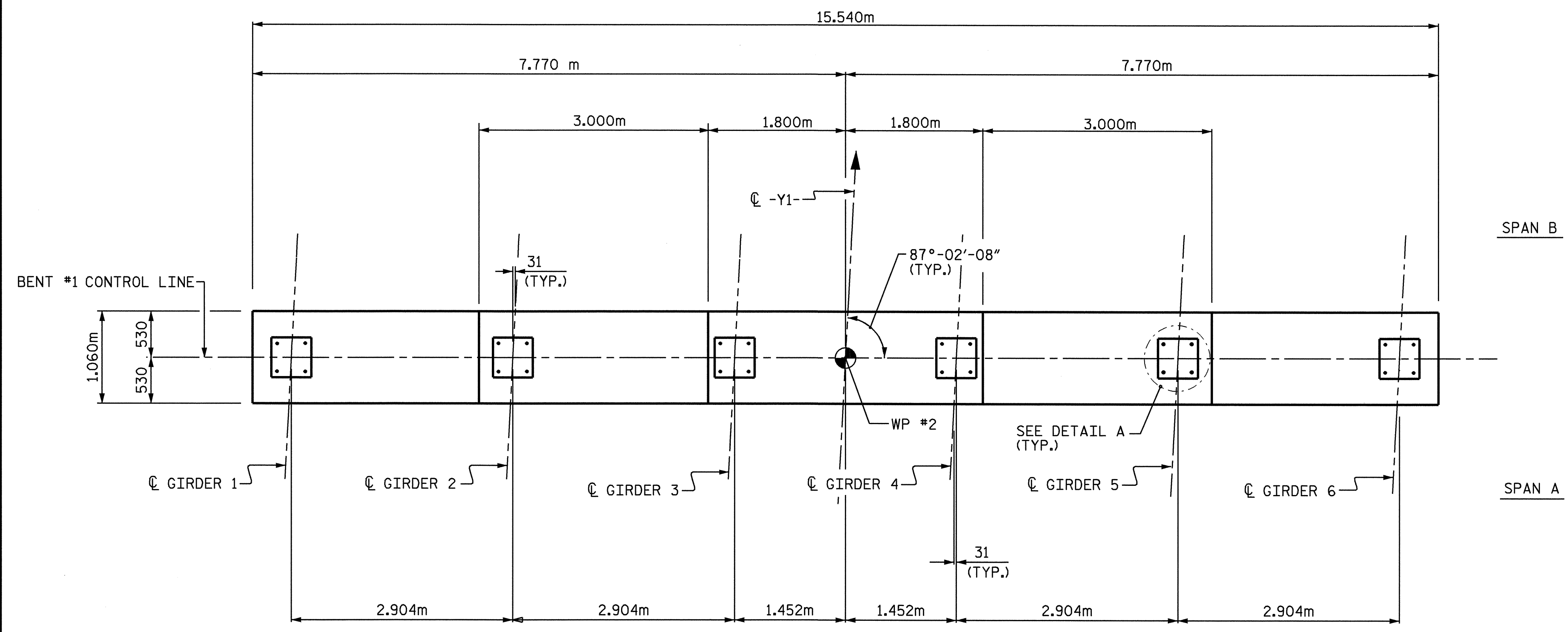


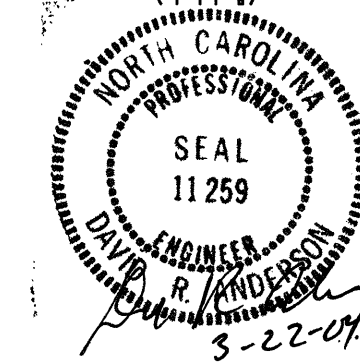
NOTE

HOOKS ON V1 BARS MAY BE TURNED AS NECESSARY FOR PLACING REINFORCING STEEL.
STIRRUPS IN CAP MAY BE SHIFTED AS NECESSARY TO CLEAR ANCHOR BOLTS.
THE TOP SURFACE AREAS OF THE BENT CAP SHALL BE CURED IN ACCORDANCE WITH THE STANDARD SPECIFICATIONS EXCEPT THAT THE MEMBRANE CURING COMPOUND METHOD SHALL NOT BE USED.
THE TOTAL VOLUME OF CLASS A CONCRETE DOES NOT INCLUDE THE VOLUME OCCUPIED BY THE 305mm P/S PILES.



PROJECT NO. R-513C
ROBESON COUNTY
STATION: 256+58.326-L-

SHEET 1 OF 2
STATE OF NORTH CAROLINA
DEPARTMENT OF TRANSPORTATION
RALEIGH
SUBSTRUCTURE
BENT #1



REVISIONS						SHEET NO.	
NO.	BY:	DATE:	NO.	BY:	DATE:	TOTAL SHEETS	
1			3			5-85	
2			4			312	

DRAWN BY: S. M. RASHIDI DATE: 4/17/02
CHECKED BY: N. Q. TRAN DATE: 7/29/02

(INFORMATION GIVEN IS TYPICAL FOR EACH COLUMN AND FOOTING)