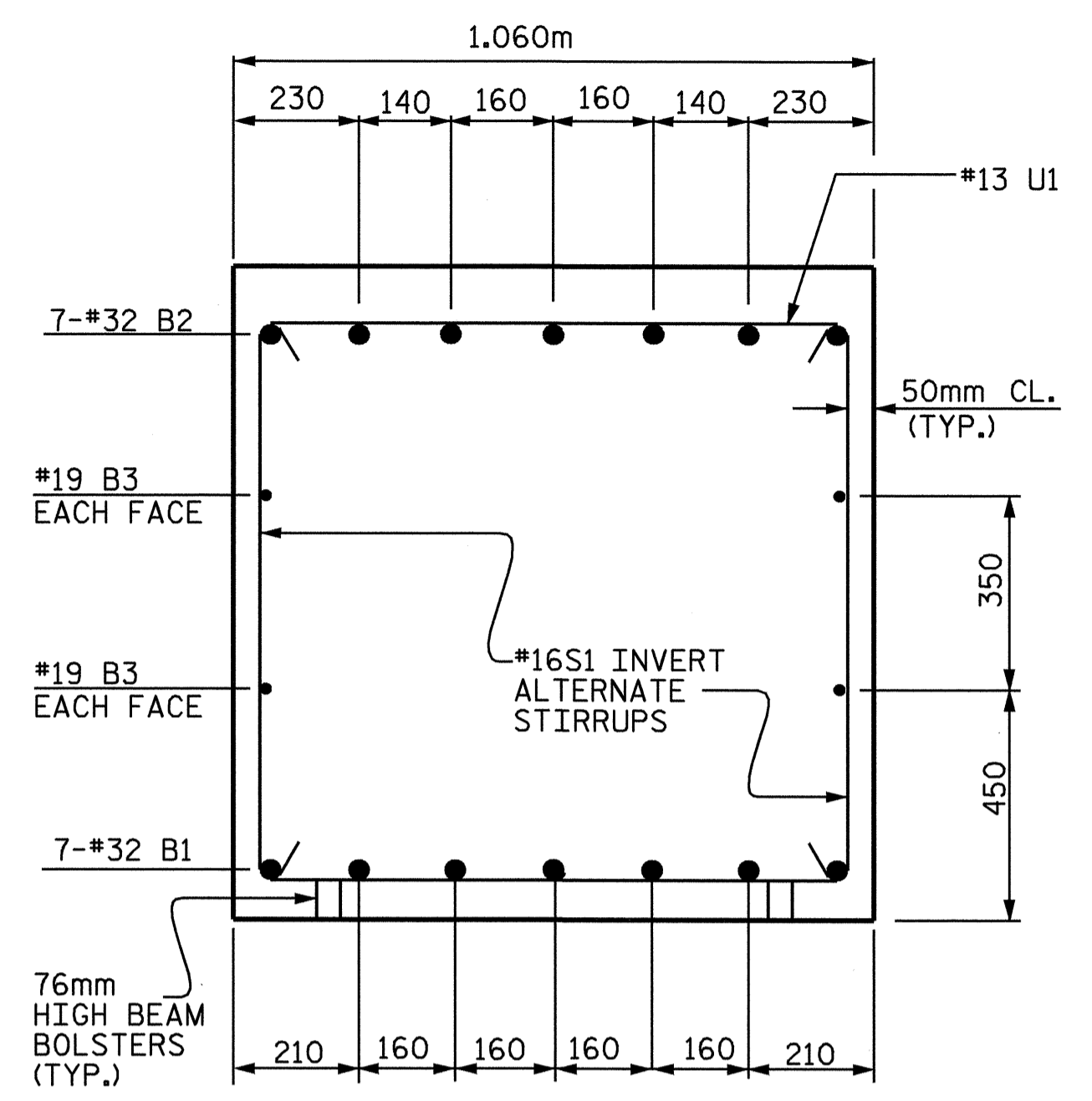
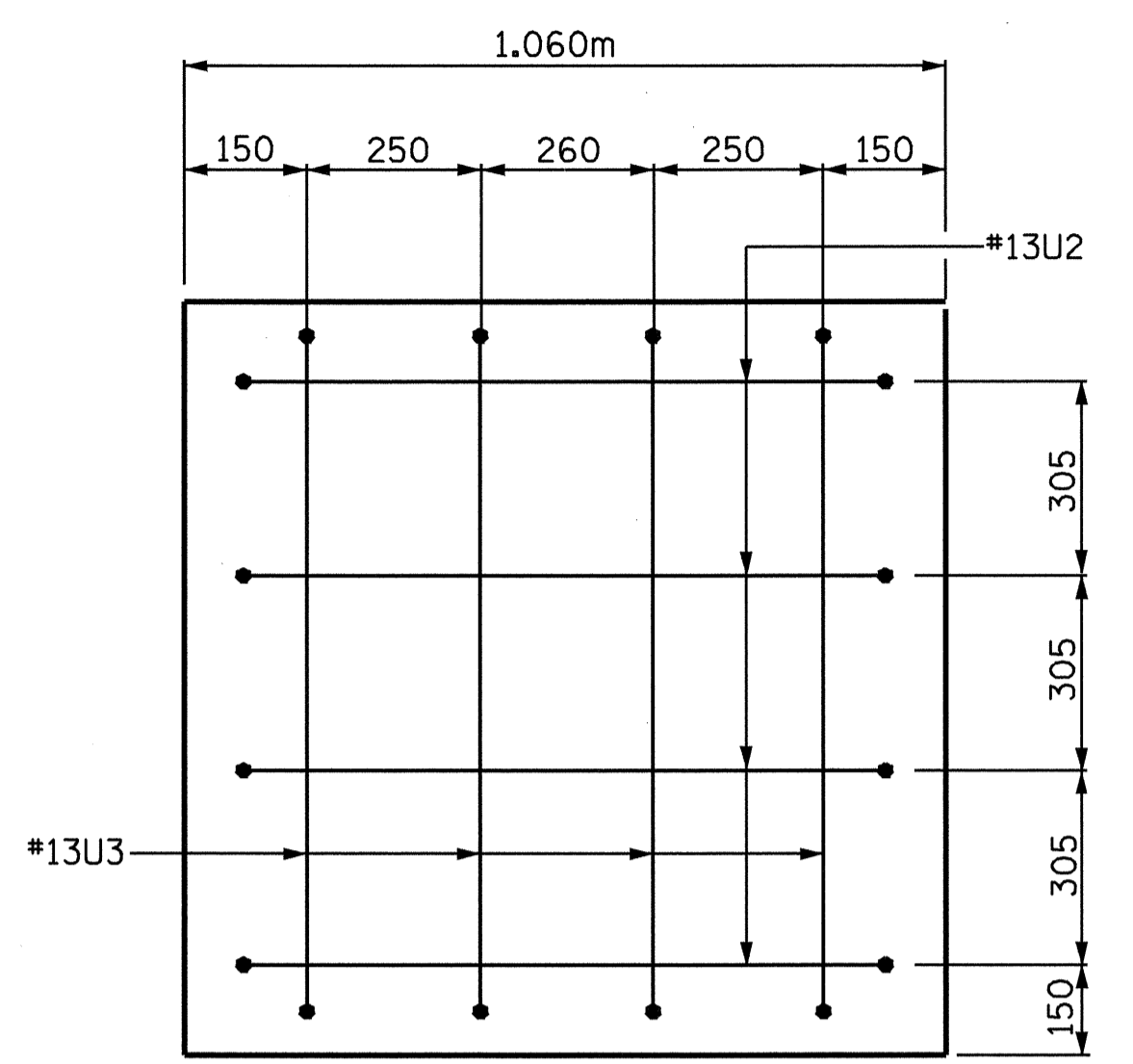


SECTION A-A



SECTION B-B



VIEW X-X

**BAR TYPES**

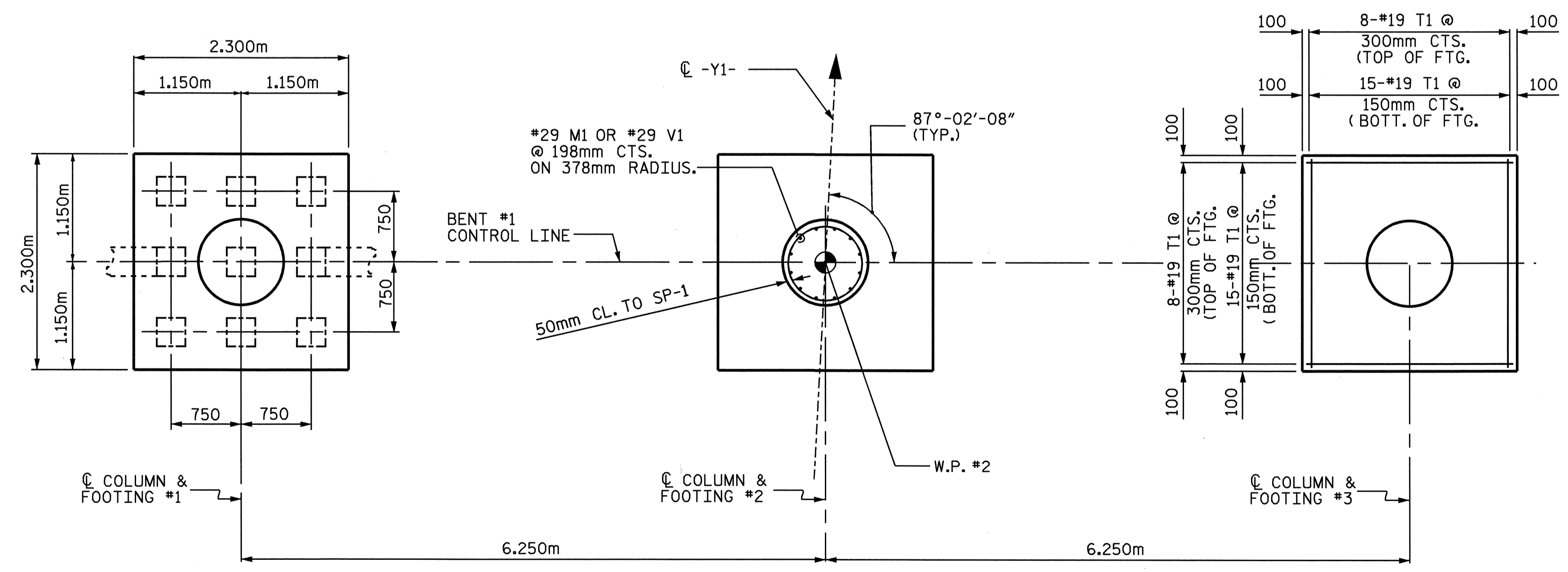
**BILL OF MATERIAL BENT #1**

BAR NO.	SIZE	TYPE	LENGTH	WEIGHT	
B1	7	32	STR	15440	692
B2	7	32	1	16280	730
B3	4	19	STR	15440	138
B4	7	13	STR	3500	24
M1	36	29	2	2600	474
S1	22	16	3	3480	119
S2	72	16	3	3200	358
T1	138	19	STR	2150	663
U1	34	13	4	1880	64
U2	8	13	4	1840	15
U3	8	13	4	1980	16
V1	36	29	2	5780	1053
<b>TOTAL REINFORCING STEEL (kg) 4346</b>					
<b>SPIRAL REINFORCING STEEL (kg)</b>					
SP-1	3	**	5	17190	510
<b>TOTAL SPIRAL REINFORCING STEEL (kg) 510</b>					
<b>CLASS A CONCRETE BREAKDOWN (m3)</b>					
POUR #1 (FOOTINGS)				14.0	
POUR #2 (COLUMNS)				9.4	
POUR #3 (BENT CAP)				20.1	
<b>TOTAL</b>				<b>43.5</b>	
<b>305mm CONCRETE PILES</b>					
NO.	27	METERS		351	

NOTE: CONCRETE DISPLACED BY CONCRETE PILES HAS BEEN DEDUCTED FROM THE TOTAL CONCRETE QUANTITY.

ALL BAR DIMENSIONS ARE OUT TO OUT.

\* THE SP-1 SPIRAL REINFORCING STEEL SHALL BE W20 OR D20 COLD DRAWN WIRE OR #13 PLAIN OR DEFORMED BAR.



PLAN OF FOOTINGS

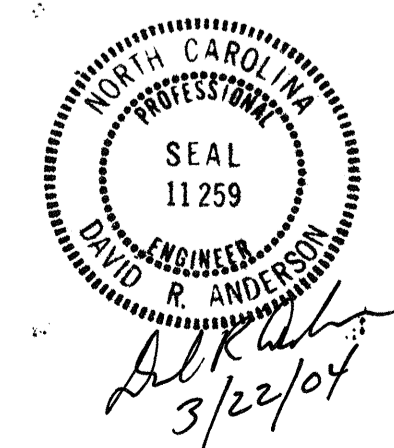
(INFORMATION GIVEN IS TYPICAL FOR EACH COLUMN AND FOOTING)

PROJECT NO. R-513C  
ROBESON COUNTY  
 STATION: 256+58.326-L-

SHEET 2 OF 2

STATE OF NORTH CAROLINA  
 DEPARTMENT OF TRANSPORTATION  
 RALEIGH

**SUBSTRUCTURE BENT #1**



REVISIONS					SHEET NO.
NO.	BY:	DATE:	NO.	BY:	DATE:
1			3		
2			4		

TOTAL SHEETS 312

DRAWN BY : S. M. RASHIDI DATE : 4/17/02  
 CHECKED BY : N. Q. TRAN DATE : 7/29/02