

NOTES

APPROACH SLAB SHALL NOT BE CONSTRUCTED PRIOR TO COMPLETION OF THE BRIDGE DECK.

FOR REINFORCED BRIDGE APPROACH FILL INCLUDING FABRIC, IMPERMEABLE GEOMEMBRANE, 102mm Ø DRAINAGE PIPE, #78M STONE, AND SELECT MATERIAL, SEE ROADWAY PLANS.

TEMPORARY DRAINAGE AND TEMPORARY BERM AND SLOPE DRAINS WILL BE PAID FOR UNDER THE LUMP SUM PRICE FOR BRIDGE APPROACH SLAB.

AREA BETWEEN THE WINGWALL AND APPROACH SLAB SHALL BE GRADED TO DRAIN THE WATER AWAY FROM THE FILL FACE OF THE BRIDGE.

THE 150mm COMP. A.B.C. SHALL EXTEND 3m BEYOND THE END OF THE APPROACH SLAB AND 300mm OUTSIDE OF EACH EDGE OF THE SLAB.

THE CONTRACTOR MAY USE 100mm TYPE B-25.0B ASPHALT CONCRETE COURSE IN LIEU OF 150mm COMP. A.B.C. IF THIS OPTION IS USED, THE BASE COURSE SHALL EXTEND 300mm BEYOND THE END OF THE APPROACH SLAB AND THE WIDTH SHALL BE THE SAME AS THAT OF THE APPROACH SLAB.

THE CONTRACTOR MAY USE 125mm CLASS "A" CONCRETE BASE IN LIEU OF 150mm COMP. A.B.C. IF THIS OPTION IS USED, THE CONCRETE BASE SHALL EXTEND 300mm BEYOND THE END OF THE APPROACH SLAB AND THE WIDTH SHALL BE THE SAME AS THAT OF THE APPROACH SLAB. THE CONCRETE SHALL BE FINISHED TO A SMOOTH SURFACE AND A LAYER OF 13.6 kg ROOFING FELT SHALL BE PLACED BETWEEN THE CONCRETE BASE AND THE APPROACH SLAB TO PREVENT BOND. THE APPROACH SLAB SHALL NOT BE CAST UNTIL THE CONCRETE BASE HAS REACHED AN AGE OF THREE CURING DAYS.

THE JOINT SHALL BE SAWED PRIOR TO THE CASTING OF THE BARRIER RAIL.

THE COST OF THE BARRIER RAIL ON THE APPROACH SLAB SHALL BE INCLUDED IN THE LUMP SUM CONTRACT PRICE BID FOR BRIDGE APPROACH SLABS.

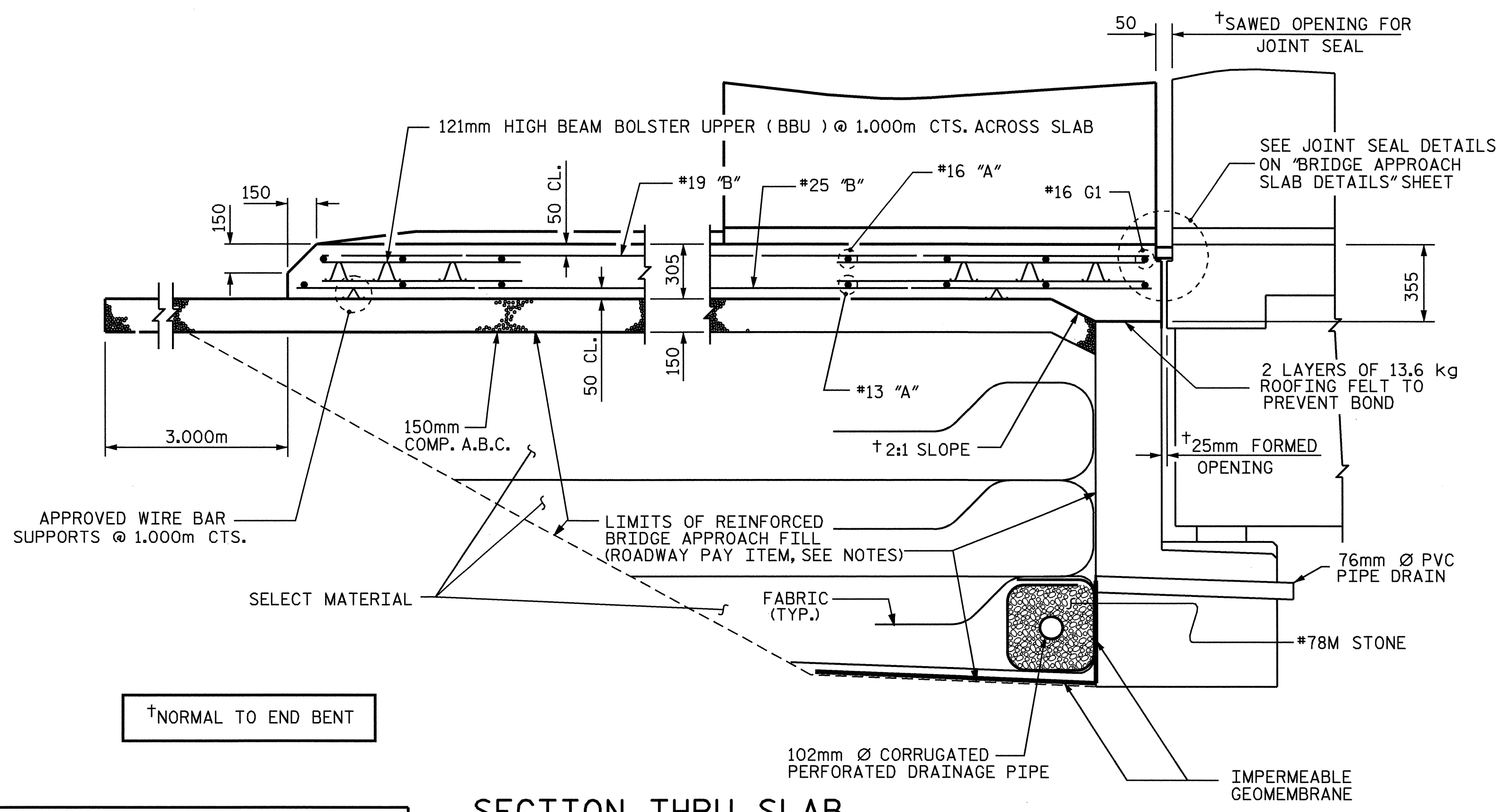
WITH EVAZOTE JOINT SEAL

FOR EVAZOTE JOINT SEALS, SEE SPECIAL PROVISIONS.

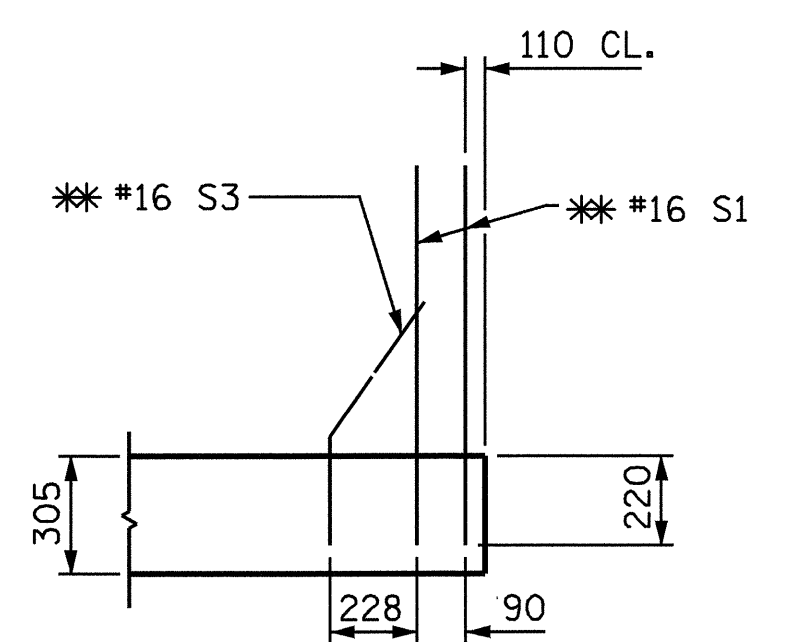
THE NOMINAL UNCOMPRESSED SEAL WIDTH OF THE EVAZOTE JOINT SEAL SHALL BE 64mm.

BILL OF MATERIAL						
FOR ONE APPROACH SLAB (2 REQ'D)						
BAR	NO.	SIZE	TYPE	LENGTH	WEIGHT	BAR TYPES
*A1	50	*16	STR	16360	1270	
A2	100	*13	STR	8460	841	
*A101	1	*16	STR	13500	21	
*A102	1	*16	STR	10600	16	
*A103	1	*16	STR	7740	12	
*A104	1	*16	STR	4840	8	
*A105	1	*16	STR	1960	3	
A201	2	*13	STR	7020	14	
A202	2	*13	STR	5580	11	
A203	2	*13	STR	4140	8	
A204	2	*13	STR	2700	5	
A205	2	*13	STR	1260	3	
*B1	220	*19	STR	4740	2331	
B2	220	*25	STR	4900	4283	
*B3	14	*16	STR	3540	77	
*B4	2	*16	3	1900	3	
REINFORCING STEEL					kg	5165
EPOXY COATED REINFORCING STEEL					kg	3956
CLASS AA CONCRETE BREAKDOWN:						
POUR 1 SLAB & CURBS					C.M.	40.7
POUR 2 RAIL					C.M.	1.6
CLASS AA CONCRETE					C.M.	42.3

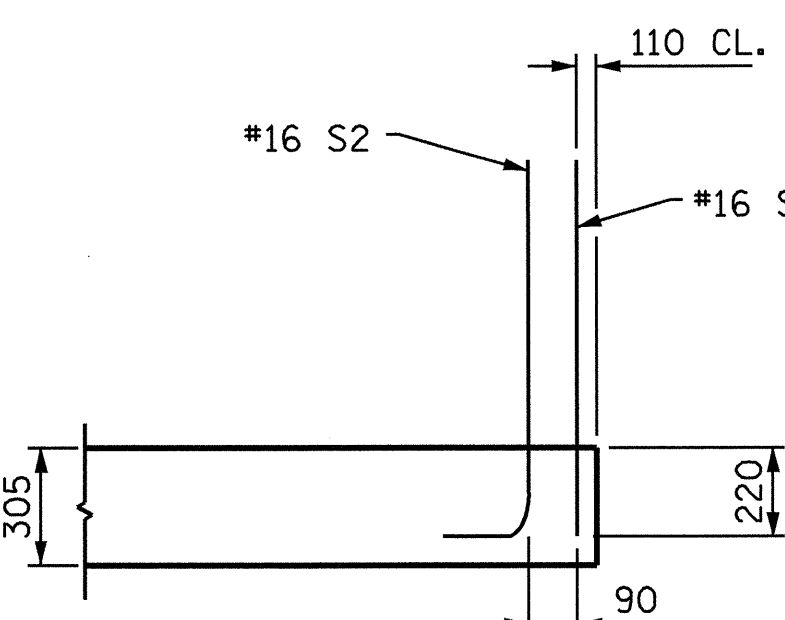
ALL BAR DIMENSIONS ARE OUT TO OUT



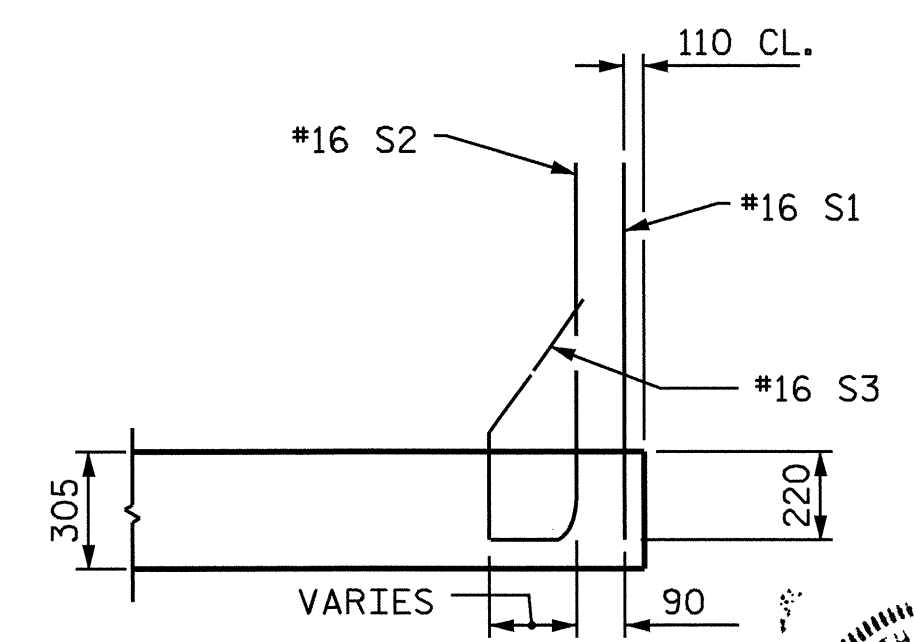
SECTION THRU SLAB



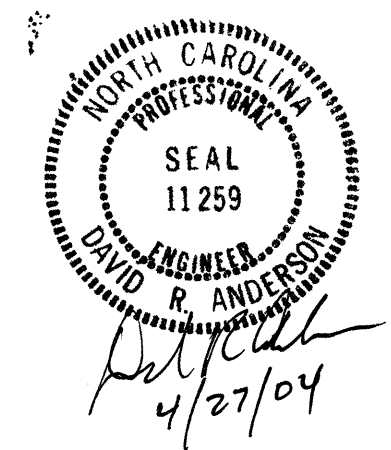
SECTION K-K
** ADHESIVELY ANCHORED



SECTION M-M



SECTION L-L



PROJECT NO. R-0513C
ROBESON COUNTY
 STATION: 256+58.326-L-

SHEET 2 OF 5

STATE OF NORTH CAROLINA
 DEPARTMENT OF TRANSPORTATION
 RALEIGH

BRIDGE APPROACH SLAB FOR FLEXIBLE PAVEMENT WITH BARRIER RAIL

REVISIONS					SHEET NO.
NO.	BY:	DATE:	NO.	BY:	DATE:
1			3		
2			4		

TOTAL SHEETS: 312

DRAWN BY: T.J. BEACH DATE: 3/26/04
 CHECKED BY: W.K. FISCHER DATE: 4/01/04