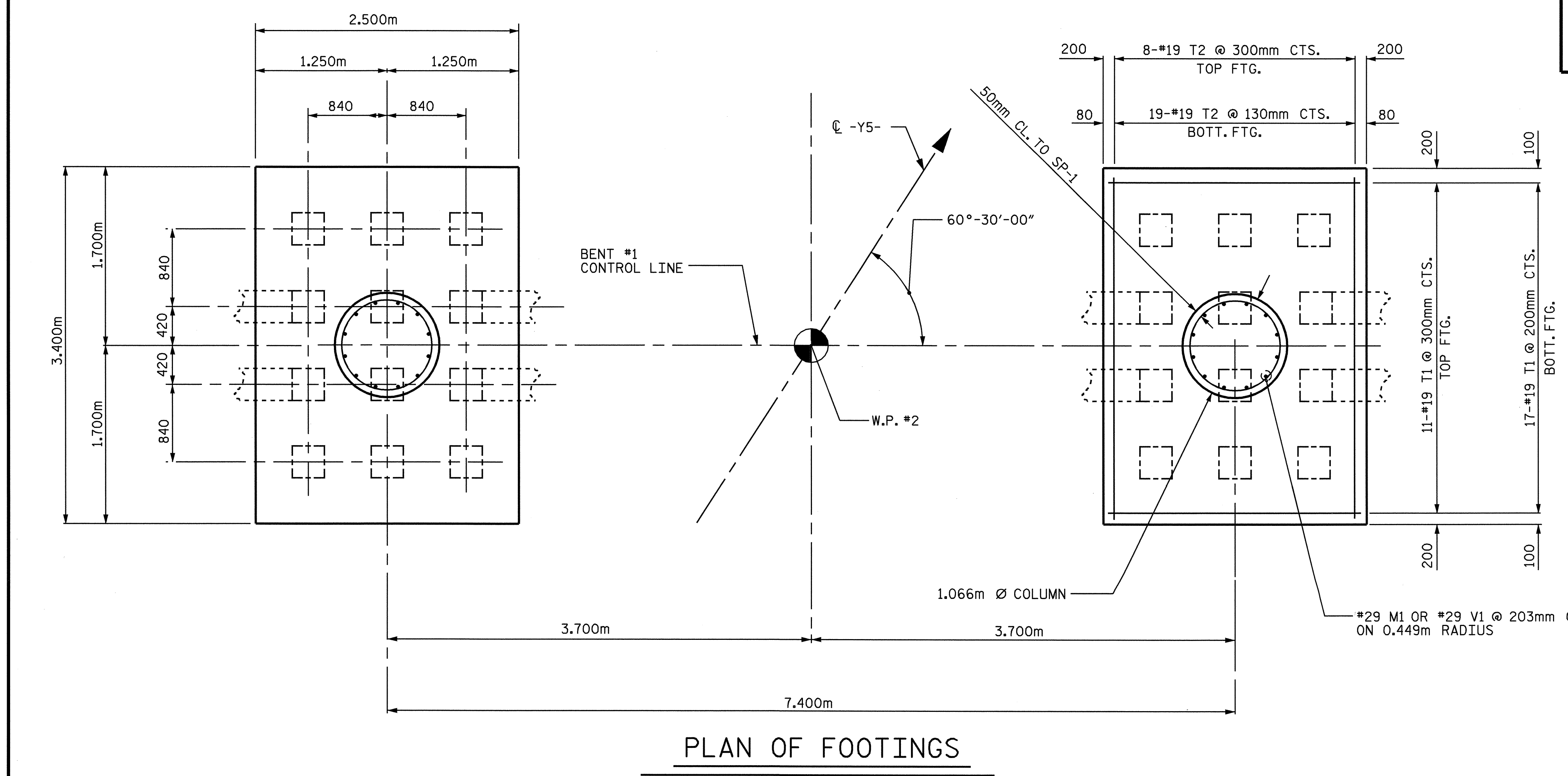


BAR TYPES		BILL OF MATERIAL				
		BENT 1				
BAR NO.	SIZE	TYPE	LENGTH	WEIGHT		
B1	7	36	STR	10900	603	
B2	7	36	1	11800	653	
B3	6	19	STR	10800	145	
M1	28	29	2	2640	374	
S1	7	16	3	3760	41	
S2	100	16	3	3400	528	
T1	56	19	STR	2340	293	
T2	54	19	STR	3240	391	
U1	20	13	4	2020	40	
U2	8	13	4	1980	16	
U3	8	13	4	2060	16	
V1	28	29	2	6580	932	
TOTAL REINFORCING STEEL (kg)				4032		
SPIRAL REINFORCING STEEL (kg)						
SP-1	2	**	5	235591	703	
TOTAL SPIRAL REINFORCING STEEL (kg)				703		
CLASS A CONCRETE BREAKDOWN (m <sup>3</sup> )						
POUR #1 (FOOTINGS)				16.5		
POUR #2 (COLUMNS)				9.9		
POUR #3 (BENT CAP)				17.4		
TOTAL				43.8		
305mm P/S CONCRETE PILES						
NO.	24	METERS		264		

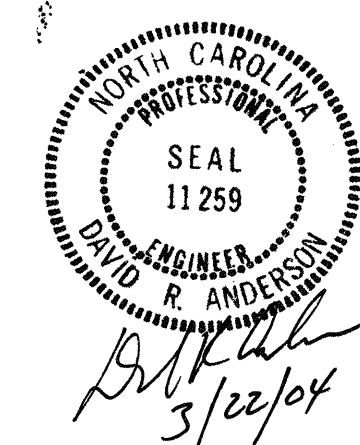
NOTE: CONCRETE DISPLACED BY CONCRETE PILES HAS BEEN DEDUCTED FROM THE TOTAL CONCRETE QUANTITY.

\*THE SP-1 SPIRAL REINFORCING STEEL SHALL BE W20 OR D20 COLD DRAWN BAR WIRE OR #13 PLAIN OR DEFORMED BAR.



DRAWN BY : S. M. RASHIDI DATE : 4/23/02  
 CHECKED BY : N. TRAN DATE : 11/20/02

(INFORMATION IS TYPICAL IN COLUMN AND FOOTING)



PROJECT NO. R-513C  
 ROBESON COUNTY  
 STATION: 271+08.001 -L-  
 SHEET 2 OF 2

STATE OF NORTH CAROLINA DEPARTMENT OF TRANSPORTATION RALEIGH					
SUBSTRUCTURE BENT#1					
REVISIONS					
NO.	BY:	DATE:	NO.	BY:	DATE:
1			3		
2			4		

SHEET NO. 5-119  
 TOTAL SHEETS 312