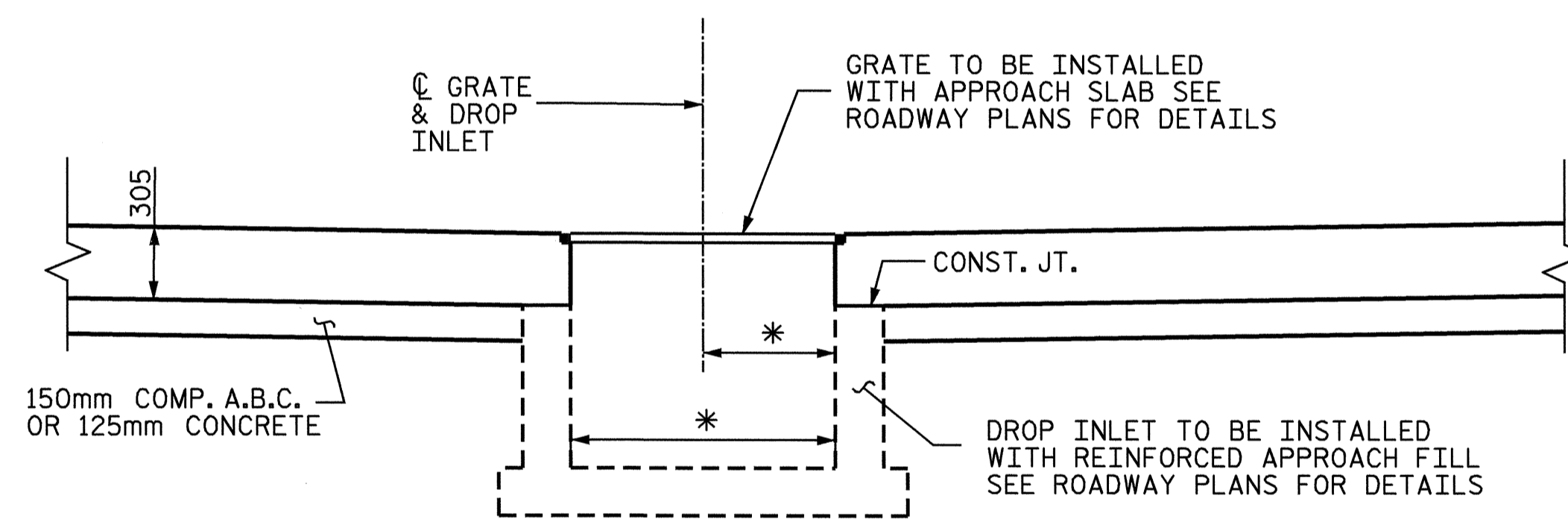
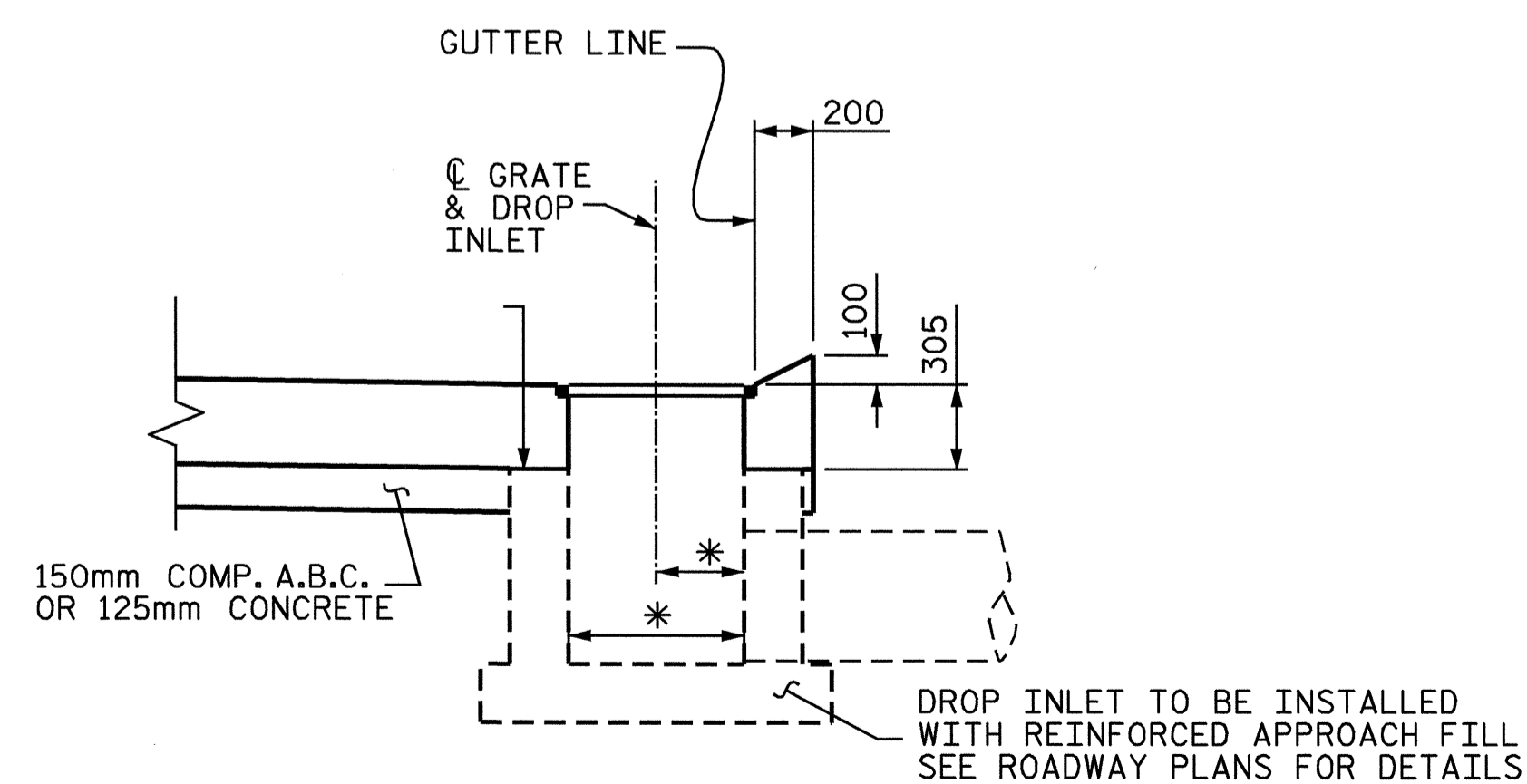


**TYPICAL PART PLAN**

NOTE: REINFORCING STEEL SHALL BE CUT AND SHIFTED TO ALLOW FOR PLACEMENT OF DROP INLET.

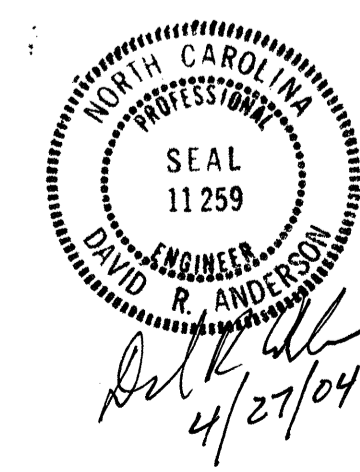


**SECTION A-A**



**SECTION B-B**

\* DROP INLET & GRATE ARE ROADWAY PAY ITEMS. SEE ROADWAY PLANS FOR DETAILS. FIELD CUT OR BEND REINFORCING STEEL IN APPROACH SLAB TO ACCOMMODATE DROP INLET BOX.



PROJECT NO. R-0513C  
ROBESON COUNTY  
 STATION: 271+08.001-L-

SHEET 5 OF 5

STATE OF NORTH CAROLINA  
 DEPARTMENT OF TRANSPORTATION  
 RALEIGH

**DRAINAGE STRUCTURE  
 ON APPROACH SLAB**

REVISIONS						SHEET NO.
NO.	BY:	DATE:	NO.	BY:	DATE:	S-129
1			3			TOTAL SHEETS
2			4			312

DRAWN BY : R.D. MARTIN DATE : 3/23/04  
 CHECKED BY : W.K. FISCHER DATE : 3/30/04