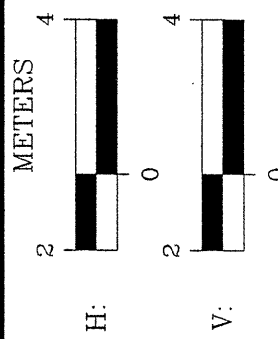
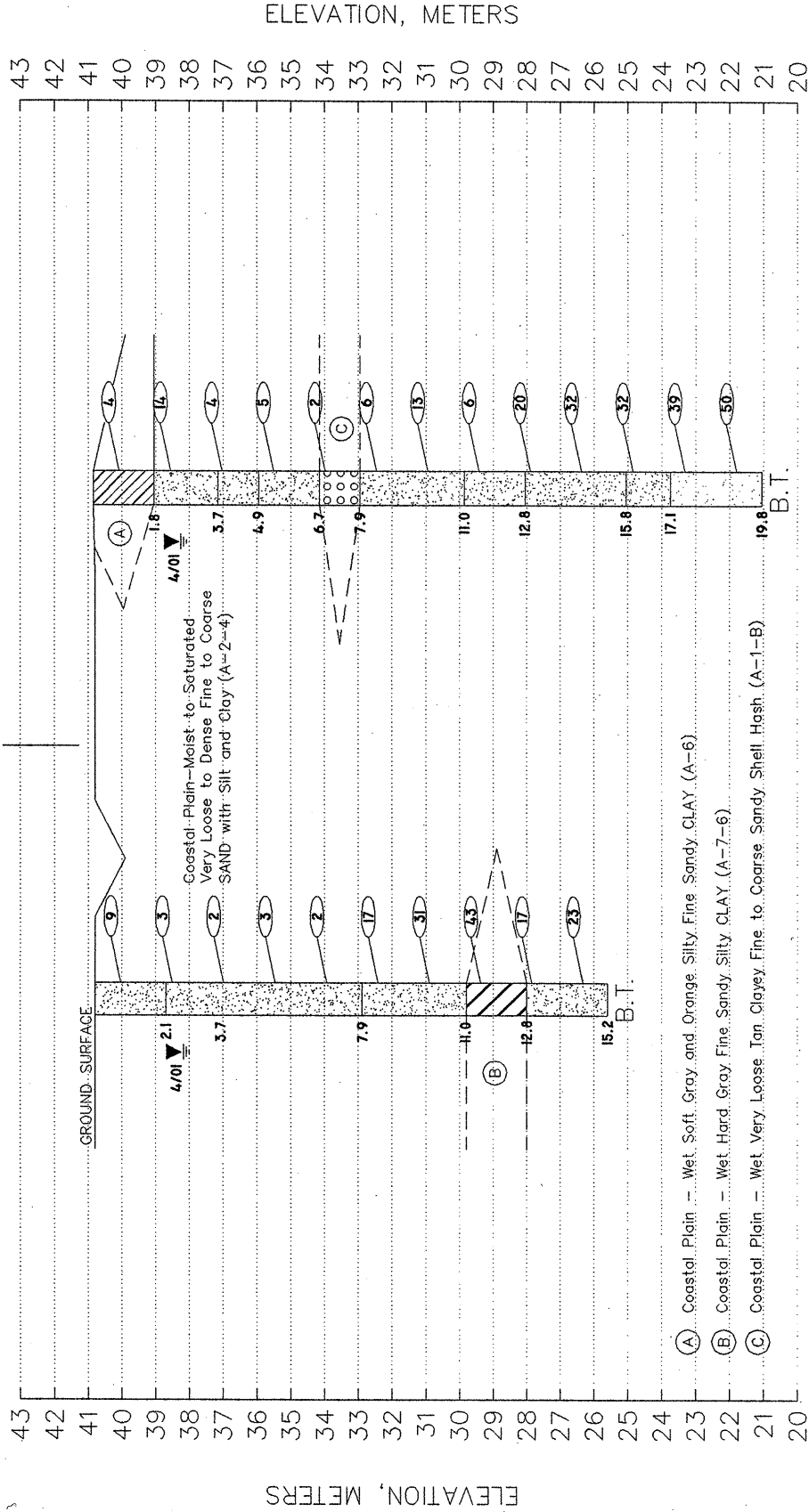


SECTION THROUGH END BENT-1

EB1-A
 STA. 13+68.75 -Y1-
 7.40 m. LT.

EB1-B
 STA. 13+69.60 -Y1-
 7.42 m. RT.

ϕ -Y1-



PROJECT NO. 6.469002T	TIP NO. R-0513C
F.A. NO.	SCALE: 1 : 200
DATE: 5/2/2001	CHECKED BY/DATE: JKB
DRAWN BY:	DRAWING NO. 3

ECS LTD

ENGINEERING
CONSULTING
SERVICES, LTD

SECTION THROUGH END BENT-1

SITE 1: BRIDGE ON -Y1 -
 (SR 1164, BACK SWAMP ROAD)
 OVER -L- (PROPOSED US 74)

ROBESON COUNTY, NORTH CAROLINA