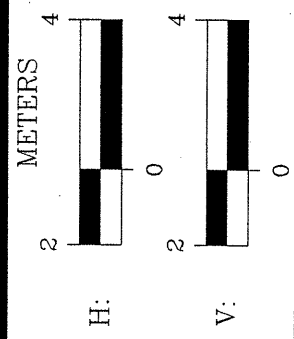
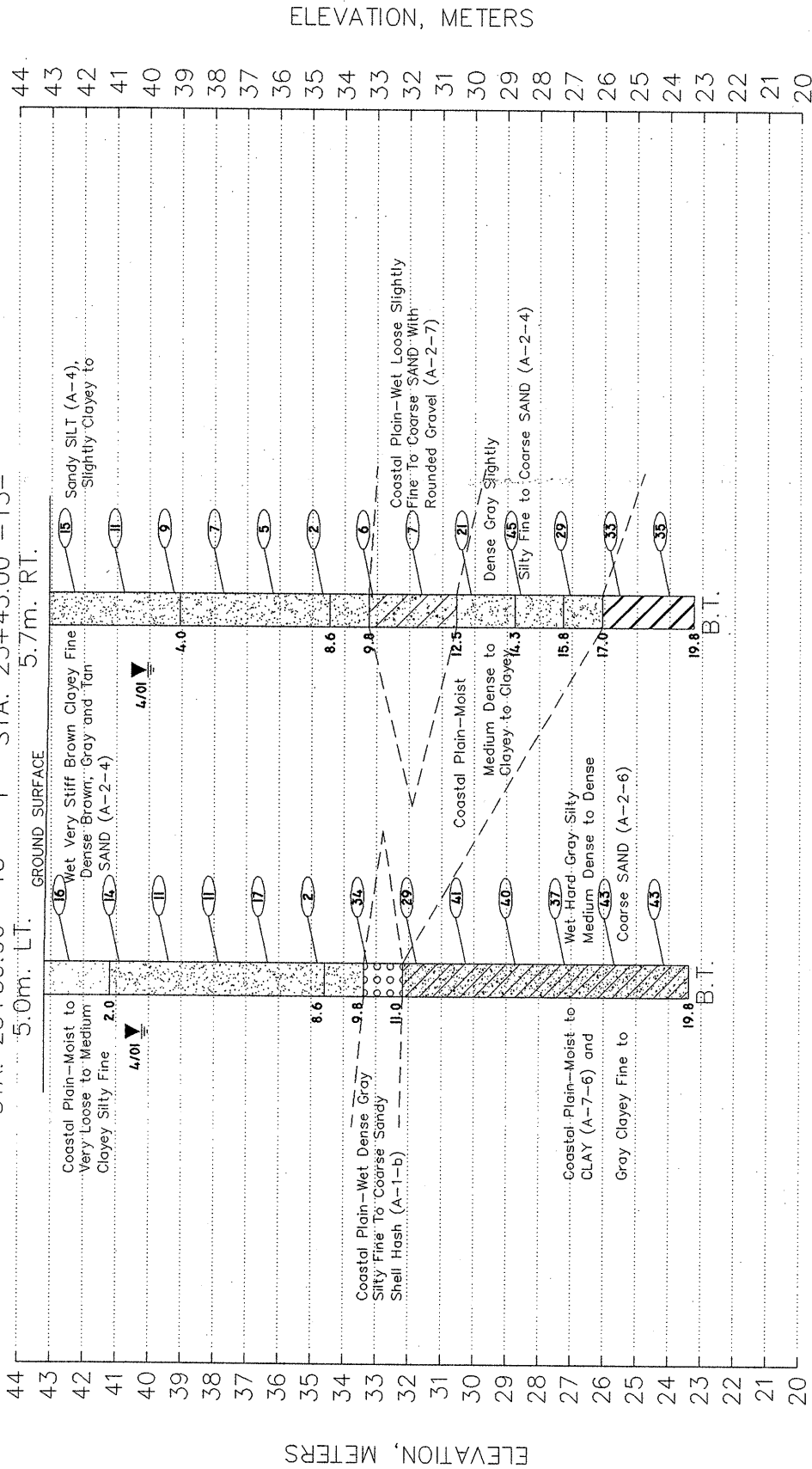
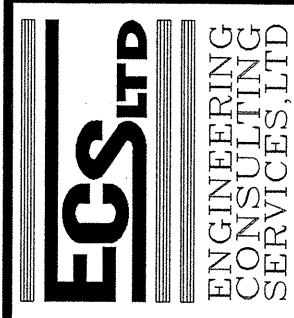


SECTION THROUGH BENT-1

B1-A ♀ -Y5- B1-B
 STA. 23+39.90 -Y5- I STA. 23+45.00 -Y5-
 5.0m. LT. GROUND SURFACE 5.7m. RT.



PROJECT NO. 6.469002T	TIP NO. R-0513C
DATE 5/9/2001	SCALE 1 : 200
DRAWN BY JKB	CHECKED BY/DATE 4



SECTION THROUGH BENT-1

SITE 2: BRIDGE ON -Y5-
 (SR 1207, HILLY BRANCH ROAD)
 OVER -L- (PROPOSED US 74)

ROBESON COUNTY, NORTH CAROLINA