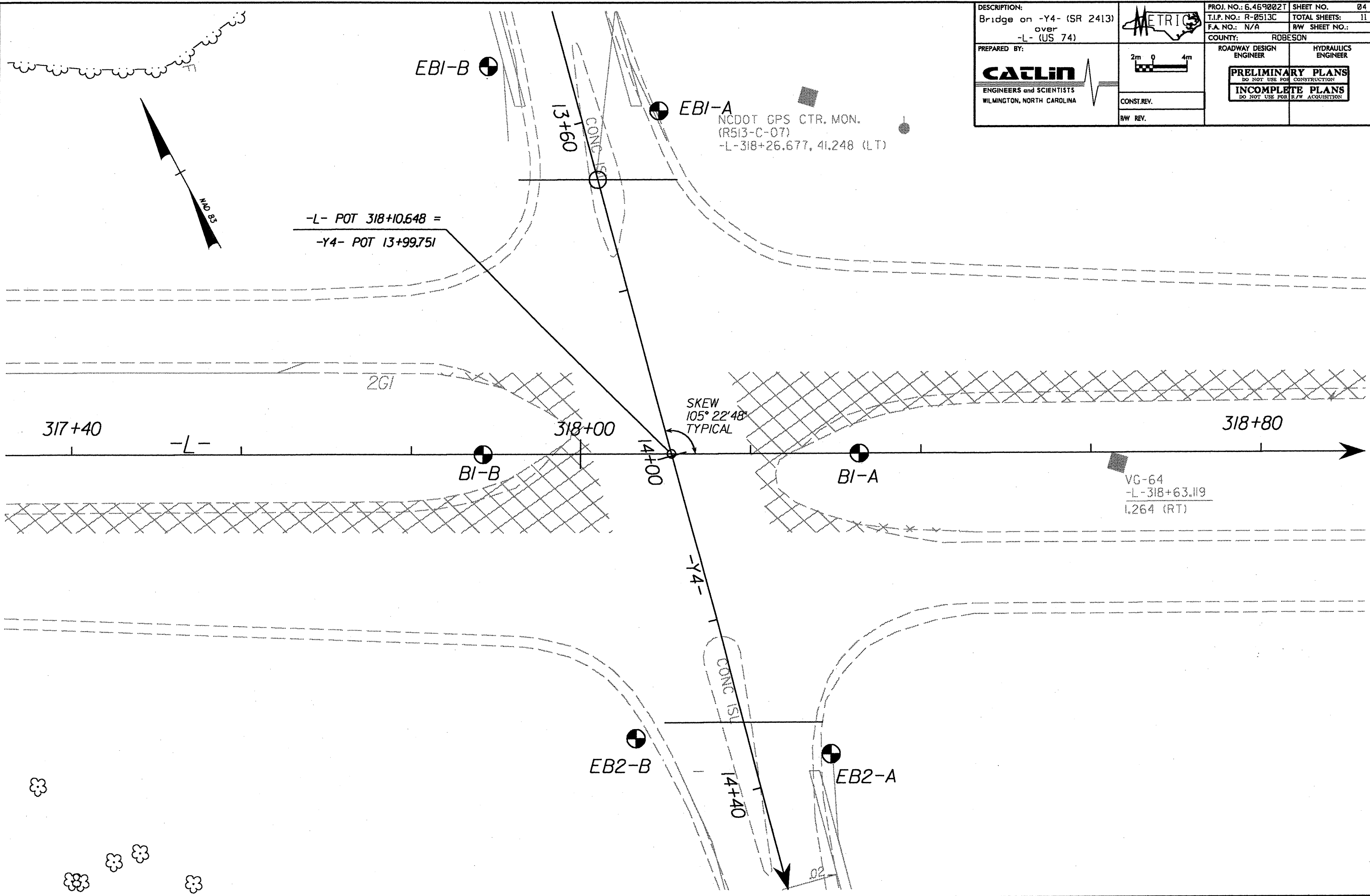


DESCRIPTION: Bridge on -Y4- (SR 2413) over -L- (US 74)	METRIC	PROJ. NO.: 6.4690021	SHEET NO. 04
		T.I.P. NO.: R-0513C	TOTAL SHEETS: 11
PREPARED BY: CATLIN ENGINEERS and SCIENTISTS WILMINGTON, NORTH CAROLINA	2m 0 4m	F.A. NO.: N/A	R/W SHEET NO.:
		COUNTY: ROBESON	
		ROADWAY DESIGN ENGINEER	HYDRAULICS ENGINEER
		PRELIMINARY PLANS <small>DO NOT USE FOR CONSTRUCTION</small> INCOMPLETE PLANS <small>DO NOT USE FOR R/W ACQUISITION</small>	
		CONSTR. REV.	
		R/W REV.	



EBI-B

EBI-A
 NCDOT GPS CTR. MON.
 (R513-C-07)
 -L-318+26.677, 41.248 (LT)

-L- POT 318+10.648 =
 -Y4- POT 13+99.751

SKEW
 105° 22' 48"
 TYPICAL

VC-64
 -L-318+63.119
 126.4 (RT)

EB2-B

EB2-A

BI-B

BI-A

317+40

318+00

318+80

13+60

14+00

14+40

NAD 83

CONC 151

-Y4-

-L-

