



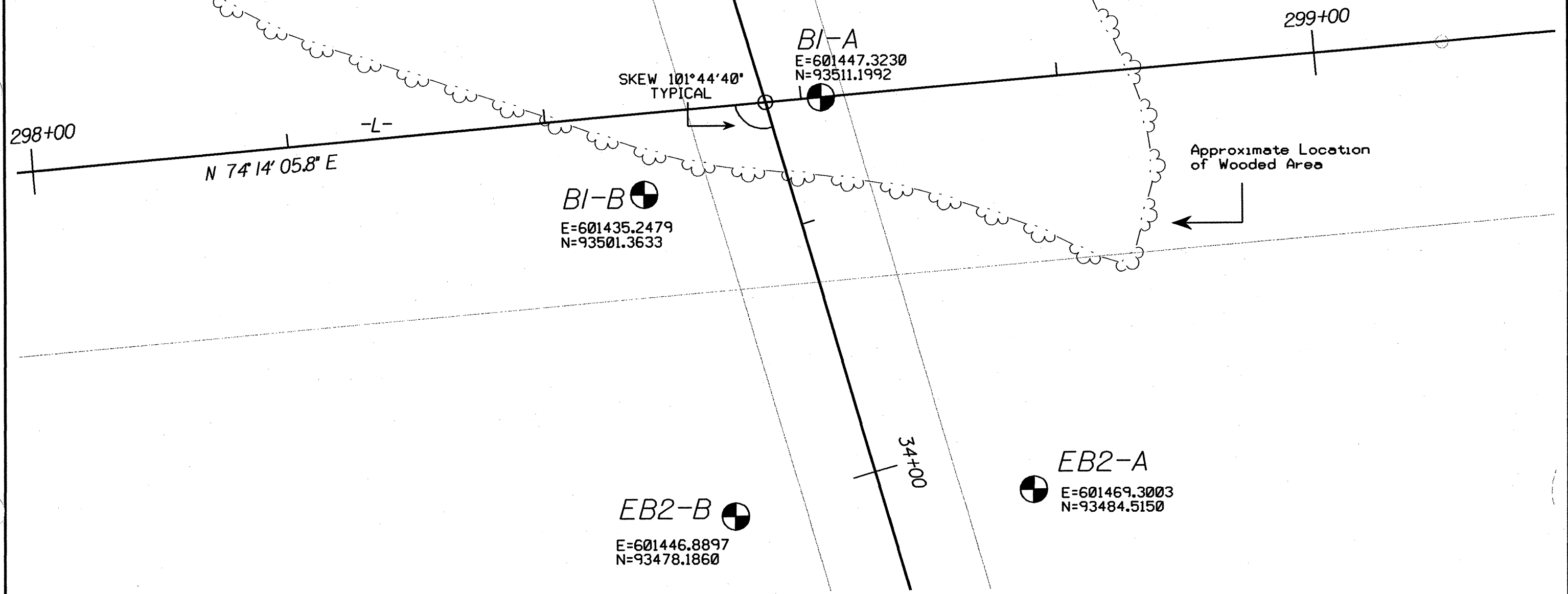


DESCRIPTION: Bridge on -Y3- (US 74) over -L- (proposed US 74)		PROJ. NO.: 6.469002T	SHEET NO. 04
		T.I.P. NO.: R-0513C	TOTAL SHEETS: 11
PREPARED BY: CALIN ENGINEERS and SCIENTISTS WILMINGTON, NORTH CAROLINA		F.A. NO.: N/A	R/W SHEET NO.:
		COUNTY: ROBESON	
		ROADWAY DESIGN ENGINEER	HYDRAULICS ENGINEER
		PRELIMINARY PLANS <small>DO NOT USE FOR CONSTRUCTION</small>	
		INCOMPLETE PLANS <small>DO NOT USE FOR R/W ACQUISITION</small>	
		CONST. REV.	
		R/W REV.	



EBI-B 
 E=601417.0369
 N=93535.5093

EBI-A 
 E=601439.4479
 N=93541.8373



Approximate Location
of Wooded Area