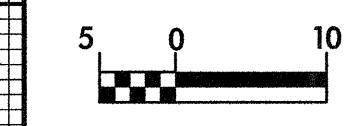


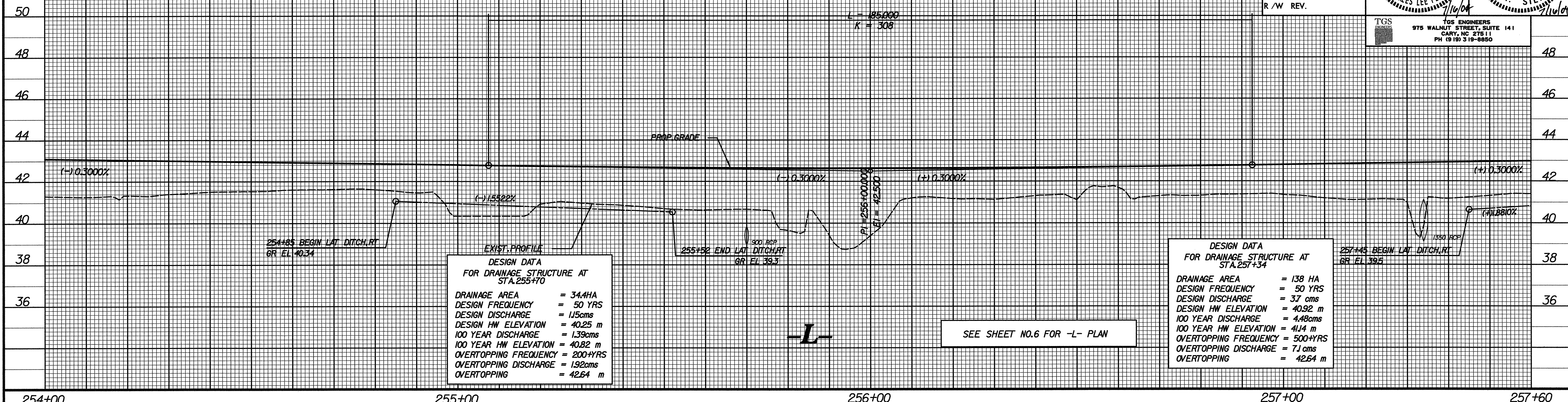
BM *2 RR SPIKE IN BASE OF 450mm PINE
121.630 LT OF -L- STA.250+81.730 EL= 41.849



| | |
|---------------------------------|---------------------|
| PROJECT REFERENCE NO. R-513C | SHEET NO. 53 |
| ROADWAY DESIGN ENGINEER | HYDRAULICS ENGINEER |
| | |
| CONST. REV. | |
| R / W REV. | |



TGS
TGS ENGINEERS
975 WALNUT STREET, SUITE 141
CARY, NC 27511
PH (919) 319-8850



DESIGN DATA
FOR DRAINAGE STRUCTURE AT
STA.255+70

| | |
|-----------------------|-----------|
| DRAINAGE AREA | = 34.4HA |
| DESIGN FREQUENCY | = 50 YRS |
| DESIGN DISCHARGE | = 1.15cms |
| DESIGN HW ELEVATION | = 40.25 m |
| 100 YEAR DISCHARGE | = 1.39cms |
| 100 YEAR HW ELEVATION | = 40.82 m |
| OVERTOPPING FREQUENCY | = 200+YRS |
| OVERTOPPING DISCHARGE | = 1.92cms |
| OVERTOPPING | = 42.64 m |

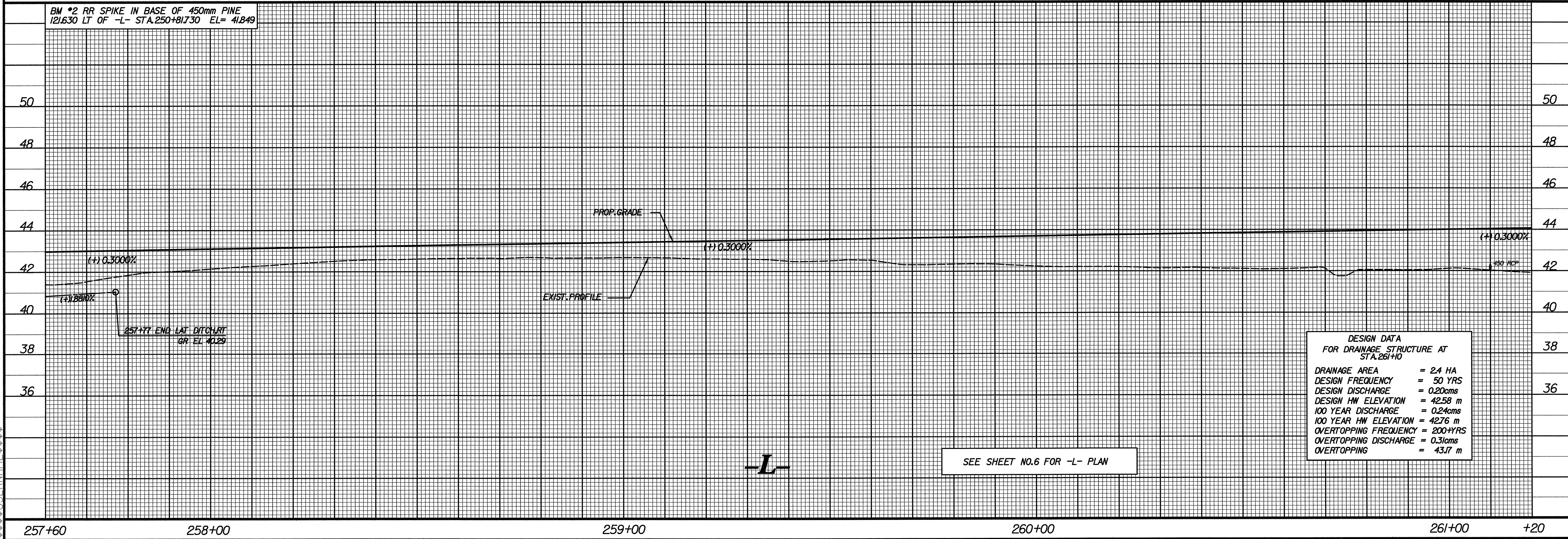
DESIGN DATA
FOR DRAINAGE STRUCTURE AT
STA.257+34

| | |
|-----------------------|-----------|
| DRAINAGE AREA | = 138 HA |
| DESIGN FREQUENCY | = 50 YRS |
| DESIGN DISCHARGE | = 3.7 cms |
| DESIGN HW ELEVATION | = 40.92 m |
| 100 YEAR DISCHARGE | = 4.48cms |
| 100 YEAR HW ELEVATION | = 41.4 m |
| OVERTOPPING FREQUENCY | = 500+YRS |
| OVERTOPPING DISCHARGE | = 7.1 cms |
| OVERTOPPING | = 42.64 m |

SEE SHEET NO.6 FOR -L- PLAN

BM *2 RR SPIKE IN BASE OF 450mm PINE
121.630 LT OF -L- STA.250+81.730 EL= 41.849

SYSTEMS DESIGN CONSULTANTS



DESIGN DATA
FOR DRAINAGE STRUCTURE AT
STA.261+00

| | |
|-----------------------|-----------|
| DRAINAGE AREA | = 2.4 HA |
| DESIGN FREQUENCY | = 50 YRS |
| DESIGN DISCHARGE | = 0.20cms |
| DESIGN HW ELEVATION | = 42.58 m |
| 100 YEAR DISCHARGE | = 0.24cms |
| 100 YEAR HW ELEVATION | = 42.76 m |
| OVERTOPPING FREQUENCY | = 200+YRS |
| OVERTOPPING DISCHARGE | = 0.31cms |
| OVERTOPPING | = 43.17 m |

SEE SHEET NO.6 FOR -L- PLAN