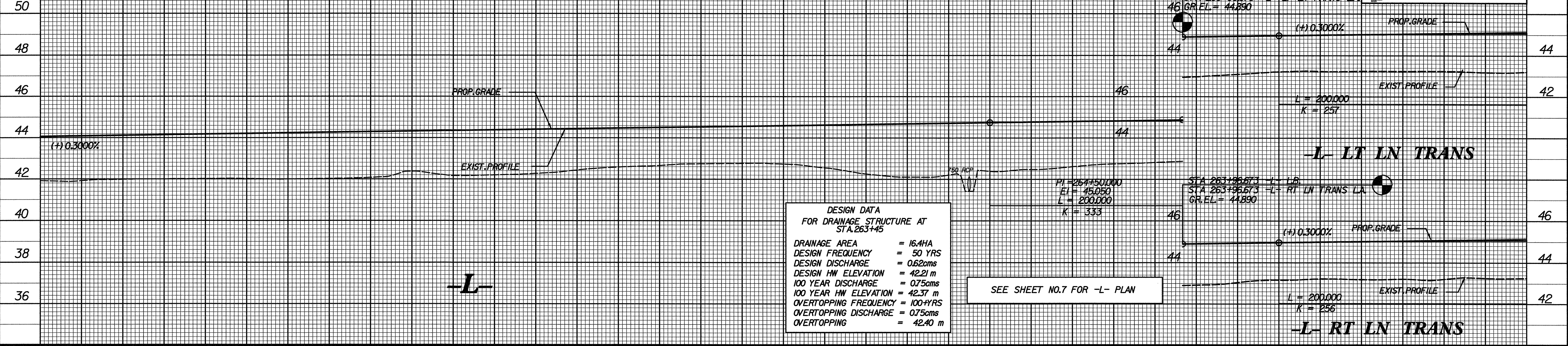


BM \*2 RR SPIKE IN BASE OF 450mm PINE  
121.630 LT OF -L- STA.250+817.30 EL= 41.849

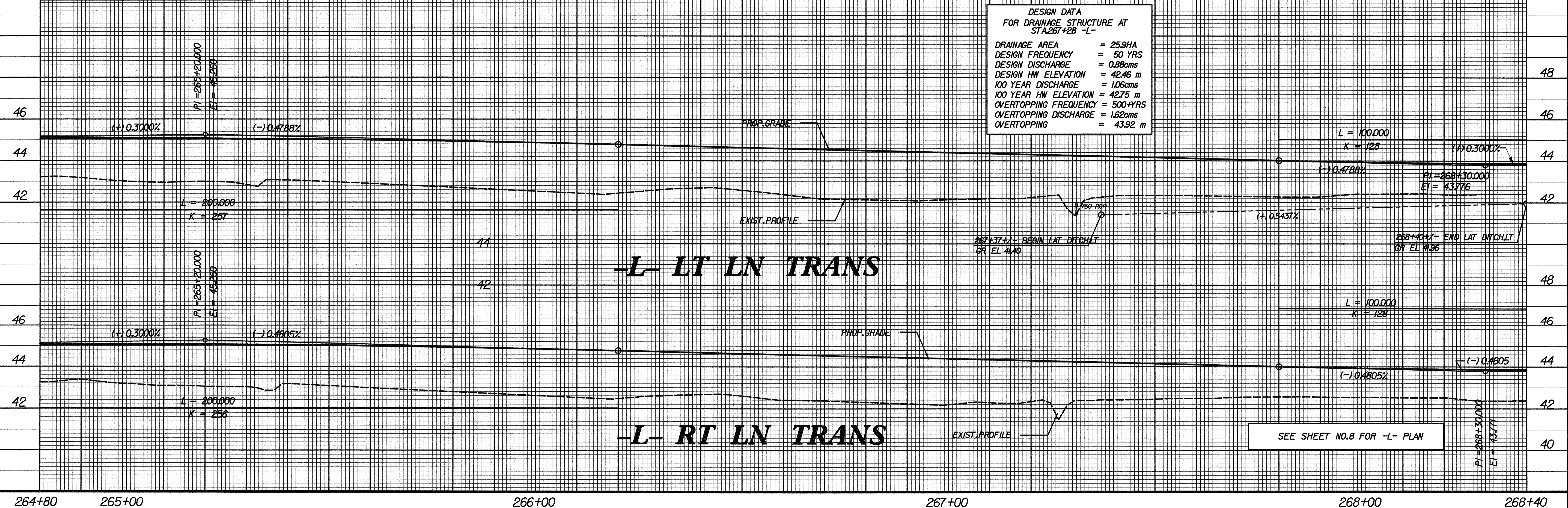
PROJECT REFERENCE NO. R-513C SHEET NO. 54  
 ROADWAY DESIGN ENGINEER HYDRAULICS ENGINEER  
 METRIC  
 5 0 10  
 CONST. REV.  
 R/W REV.  
 TGS  
 TGS ENGINEERS  
 975 WALNUT STREET, SUITE 141  
 CARY, NC 27511  
 PH (919) 319-9880



BM \*4 RR SPIKE IN BASE OF 750mm PINE  
86.610 RT OF -L- STA.284+93.432 EL= 42.011

DESIGN DATA FOR DRAINAGE STRUCTURE AT STA.267+28 -L-

DRAINAGE AREA	= 25.9HA
DESIGN FREQUENCY	= 50 YRS
DESIGN DISCHARGE	= 0.88cms
DESIGN HW ELEVATION	= 42.46 m
100 YEAR DISCHARGE	= 1.06cms
100 YEAR HW ELEVATION	= 42.75 m
OVERTOPPING FREQUENCY	= 500+YRS
OVERTOPPING DISCHARGE	= 1.62cms
OVERTOPPING	= 43.92 m



\$\$\$\$SYTIME\$\$\$\$  
 \$\$\$DGN\$\$\$\$  
 \$\$\$USERNAML\$\$\$\$