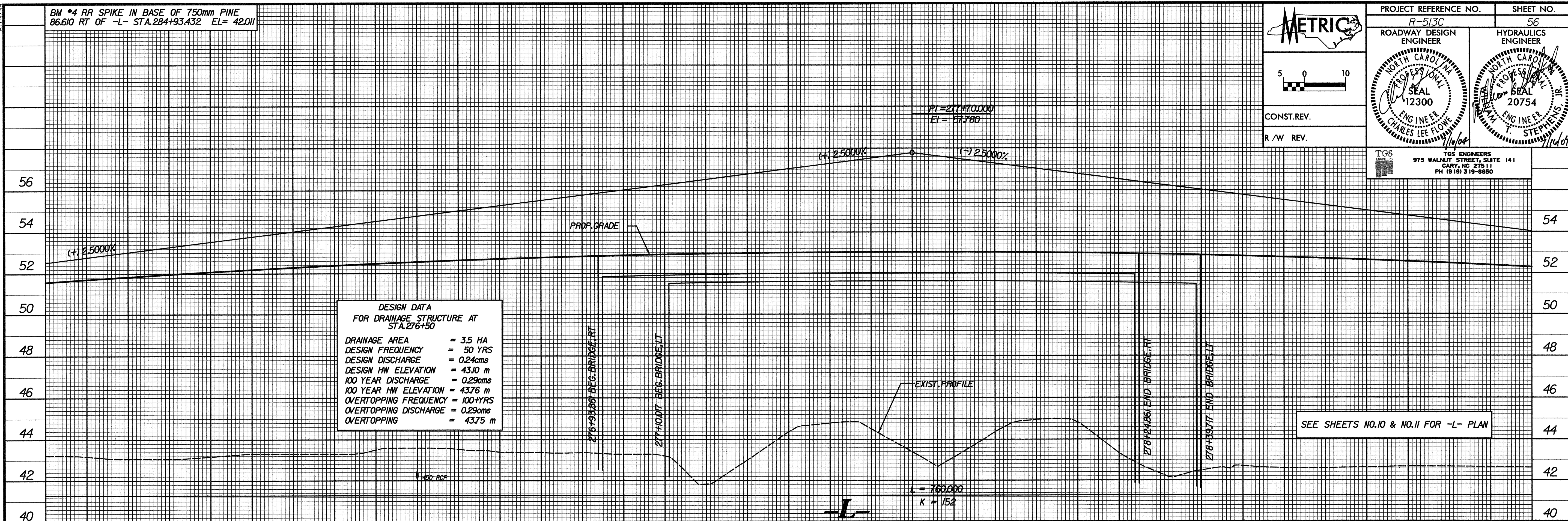


BM *4 RR SPIKE IN BASE OF 750mm PINE
86.610 RT OF -L- STA.284+93.432 EL= 42.011

METRIC

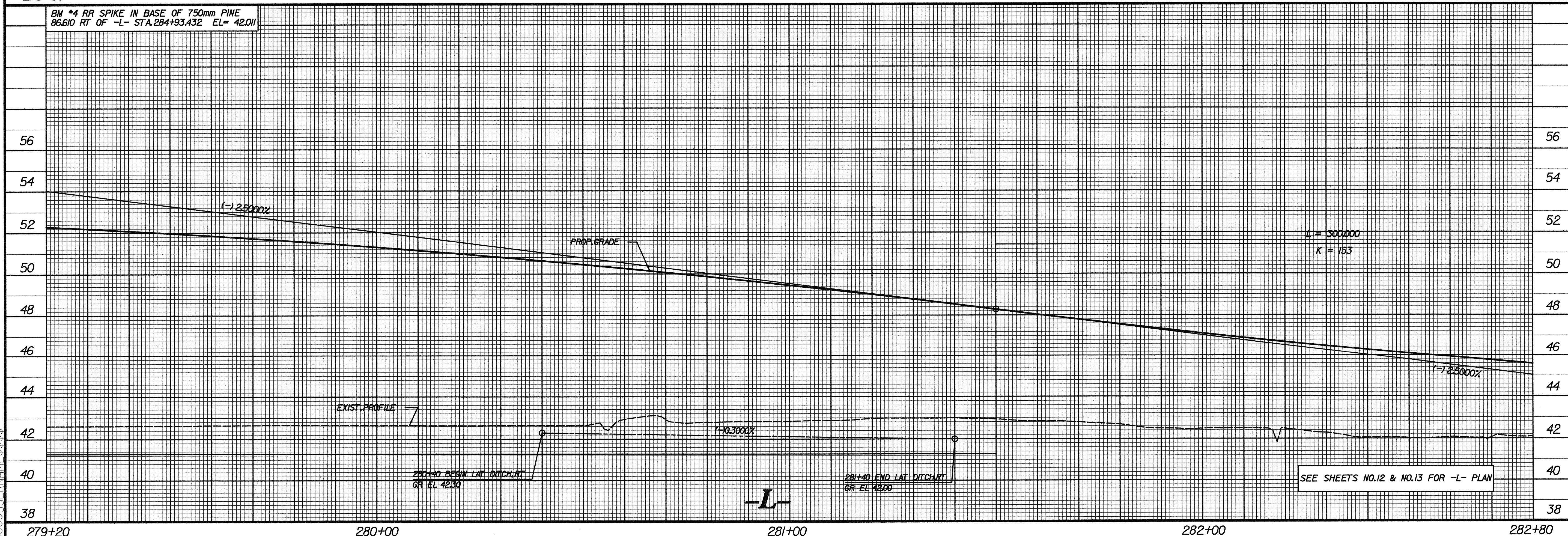
CONST. REV.
R / W REV.

PROJECT REFERENCE NO. R-513C	SHEET NO. 56
ROADWAY DESIGN ENGINEER	HYDRAULICS ENGINEER
<p>TGS ENGINEERS 975 WALNUT STREET, SUITE 141 CARY, NC 27511 PH (919) 319-9850</p>	



275+60 276+00 277+00 278+00 279+00 +20

BM *4 RR SPIKE IN BASE OF 750mm PINE
86.610 RT OF -L- STA.284+93.432 EL= 42.011



279+20 280+00 281+00 282+00 282+80

SYSTEMS DGM USER NAME \$\$\$\$ TIME \$\$\$\$