

BM #5 RR SPIKE IN BASE OF 400mm PINE
55.338 RT OF -L- STA.291+42740 EL= 43.044



PROJECT REFERENCE NO. R-513C SHEET NO. 58

ROADWAY DESIGN ENGINEER
HYDRAULICS ENGINEER

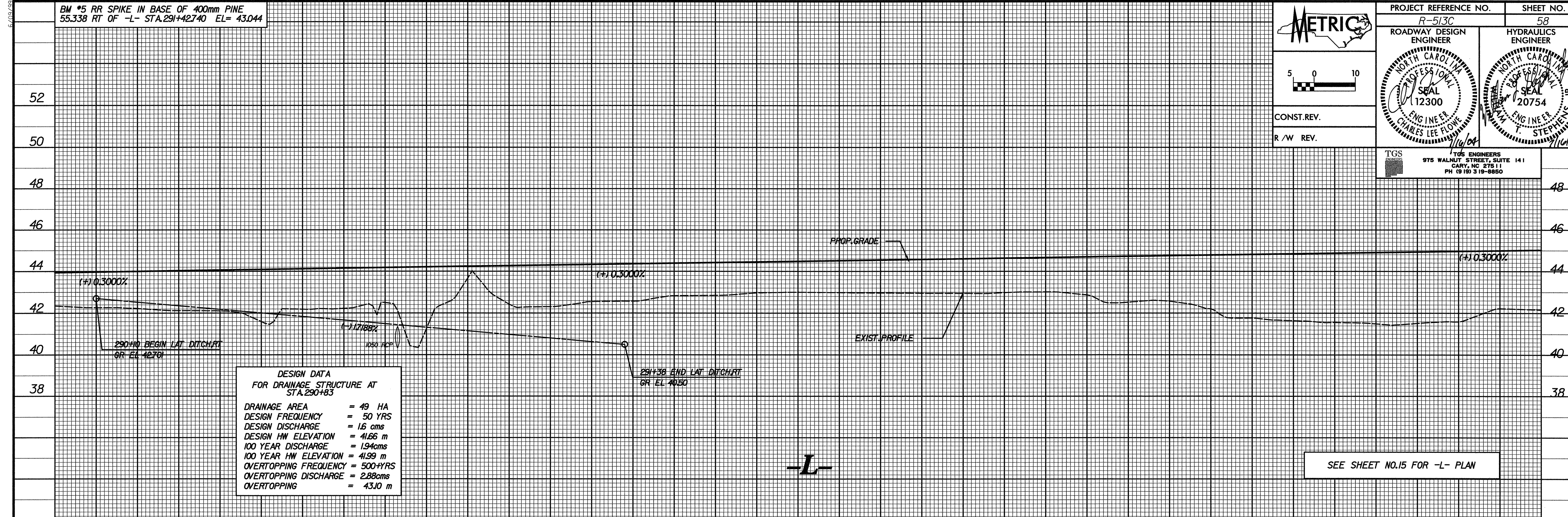
PROFESSIONAL SEAL
12300
ENGINEER
CHARLES LEE FLOWE

PROFESSIONAL SEAL
20754
ENGINEER
T. STEPHENS

TGS ENGINEERS
975 WALNUT STREET, SUITE 141
CARY, NC 27511
PH 919 319-8850

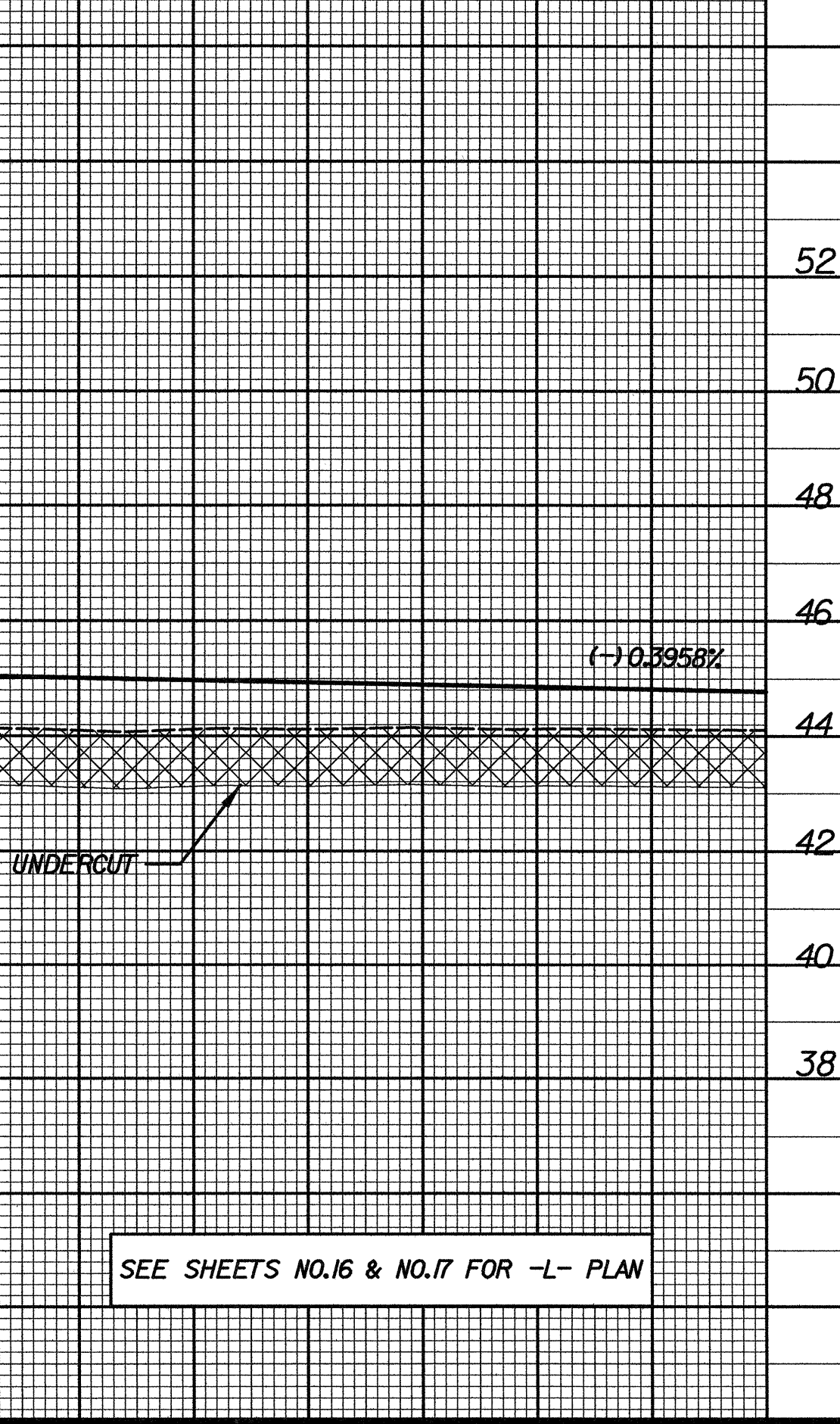


CONST. REV.
R / W REV.



290+00 291+00 292+00 293+00 293+60

BM #112 STD. NCDOT GPS MONUMENT,
STAMPED R0513C-12, DATE 1/31/97
507.452 RT OF -L- STA.294+98.7780 EL= 43.322



293+60 294+00 295+00 296+00 297+00 +20

SYSTEME D'INFORMATION GÉOMÉTRIQUE
D'UN PROJET D'AMÉNAGEMENT
D'UN TRONÇON DE ROUTE