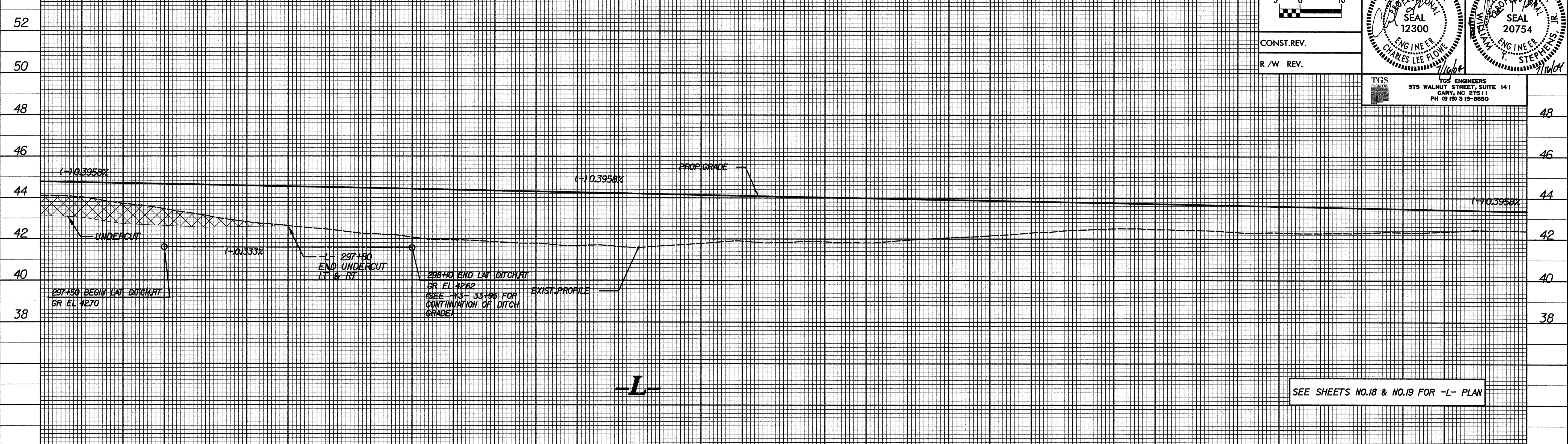


BM \*112 STD. NCDOT GPS MONUMENT,  
 STAMPED R0513C-12, DATE 1/97  
 507.452 RT OF -L- STA. 294+98.7780 EL= 43.322

**METRIC**

CONST. REV.  
 R / W REV.

PROJECT REFERENCE NO. R-513C	SHEET NO. 59
ROADWAY DESIGN ENGINEER SEAL 12300 CHARLES LEE FLORE	HYDRAULICS ENGINEER SEAL 20754 STEPHEN T. STEPHENS
TGS ENGINEERS 975 WALNUT STREET, SUITE 141 CARY, NC 27511 PH (919) 319-8850	



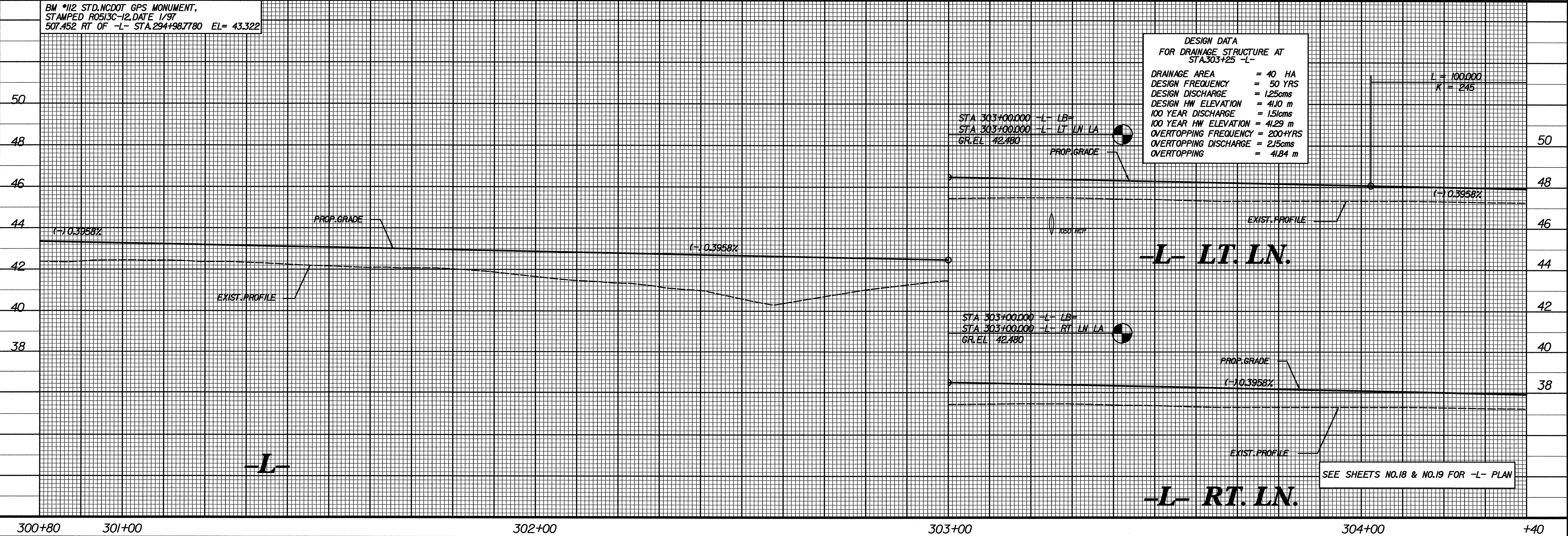
SEE SHEETS NO.18 & NO.19 FOR -L- PLAN

BM \*112 STD. NCDOT GPS MONUMENT,  
 STAMPED R0513C-12, DATE 1/97  
 507.452 RT OF -L- STA. 294+98.7780 EL= 43.322

**DESIGN DATA  
 FOR DRAINAGE STRUCTURE AT  
 STA 303+25 -L-**

DRAINAGE AREA	= 40 HA
DESIGN FREQUENCY	= 50 YRS
DESIGN DISCHARGE	= 1.25cms
DESIGN HW ELEVATION	= 41.0 m
100 YEAR DISCHARGE	= 1.51cms
100 YEAR HW ELEVATION	= 41.29 m
OVERTOPPING FREQUENCY	= 200+YRS
OVERTOPPING DISCHARGE	= 2.15cms
OVERTOPPING	= 41.84 m

L = 100.000  
 K = 245



SEE SHEETS NO.18 & NO.19 FOR -L- PLAN

\$\$\$\$\$SYTIME\$\$\$\$\$  
 \$\$\$\$\$\$DGN\$\$\$\$\$  
 \$\$\$\$\$\$USERNAME\$\$\$\$\$