

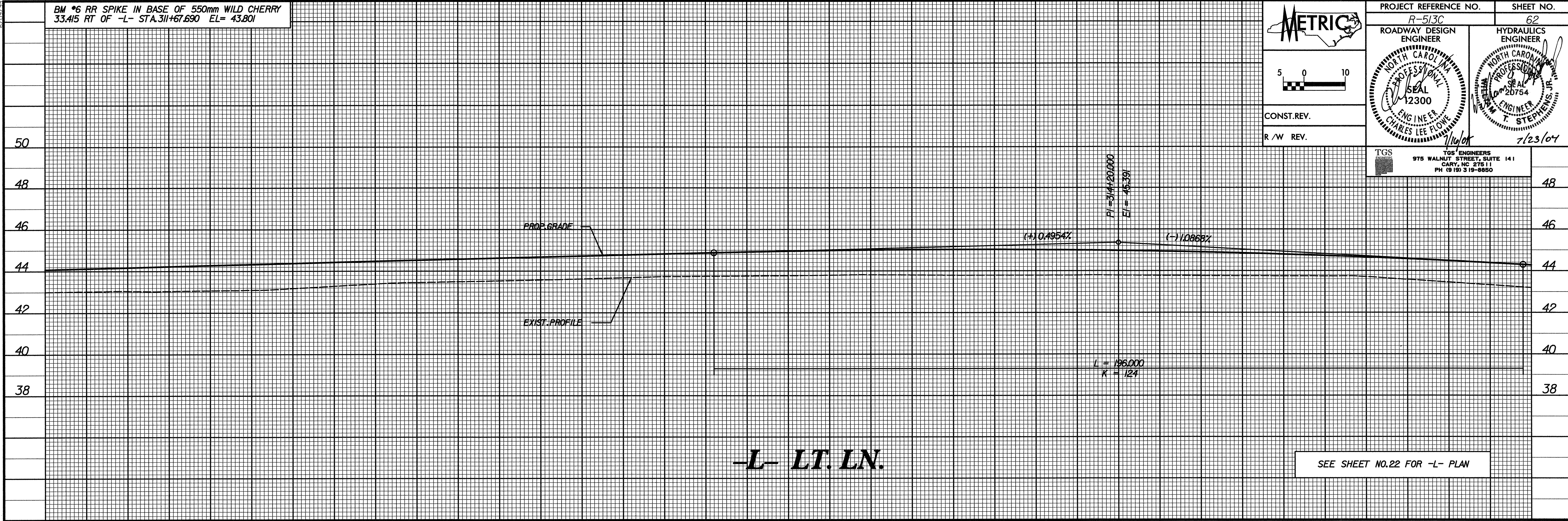
BM *6 RR SPIKE IN BASE OF 550mm WILD CHERRY
33.415 RT OF -L- STA.311+67.690 EL= 43.801



PROJECT REFERENCE NO. R-513C	SHEET NO. 62
ROADWAY DESIGN ENGINEER	HYDRAULICS ENGINEER
CONST. REV.	
R / W REV.	



TGS ENGINEERS
975 WALNUT STREET, SUITE 141
CARY, NC 27511
PH (919) 319-8850



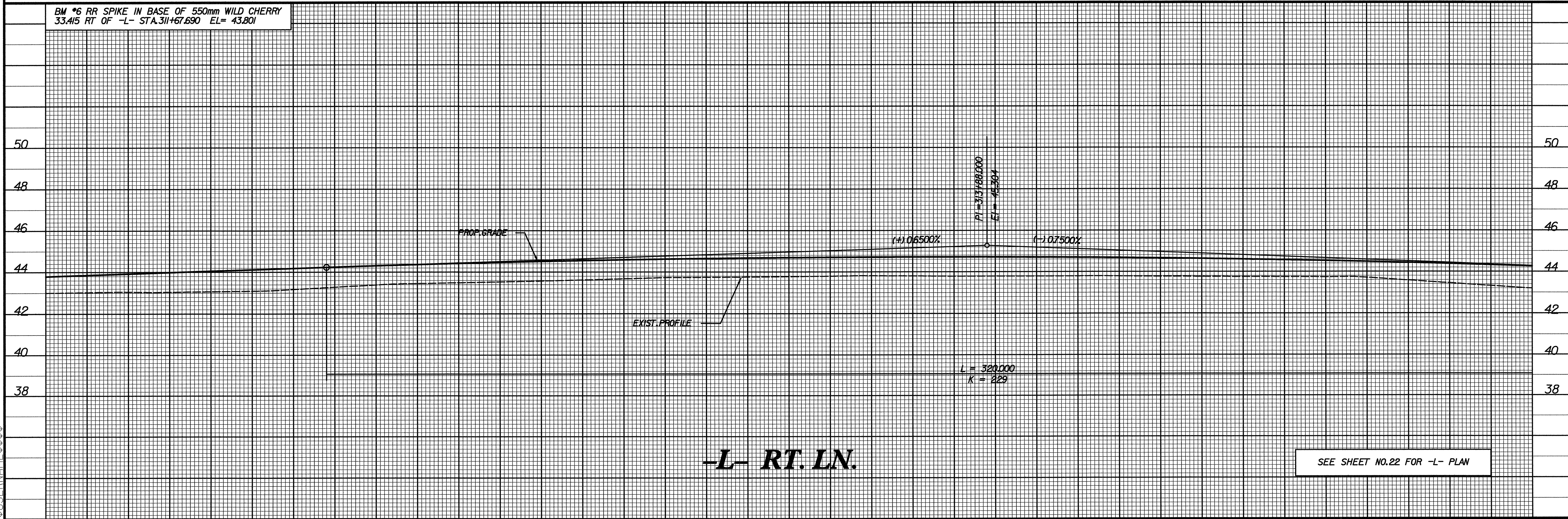
-L- LT. LN.

SEE SHEET NO.22 FOR -L- PLAN

311+60 312+00 313+00 314+00 315+00 315+20

BM *6 RR SPIKE IN BASE OF 550mm WILD CHERRY
33.415 RT OF -L- STA.311+67.690 EL= 43.801

SYSTEMS
DUNN
FRANVILLE
US



-L- RT. LN.

SEE SHEET NO.22 FOR -L- PLAN

311+60 312+00 313+00 314+00 315+00 315+20