

BM \*109 STD.NCDOT GPS MONUMENT,  
 STAMPED R0513C-9, DATE 1/97  
 3.266 RT OF -L- STA.334+28.618 EL= 41.709

**METRIC**

PROJECT REFERENCE NO. R-513C SHEET NO. 67

ROADWAY DESIGN ENGINEER HYDRAULICS ENGINEER

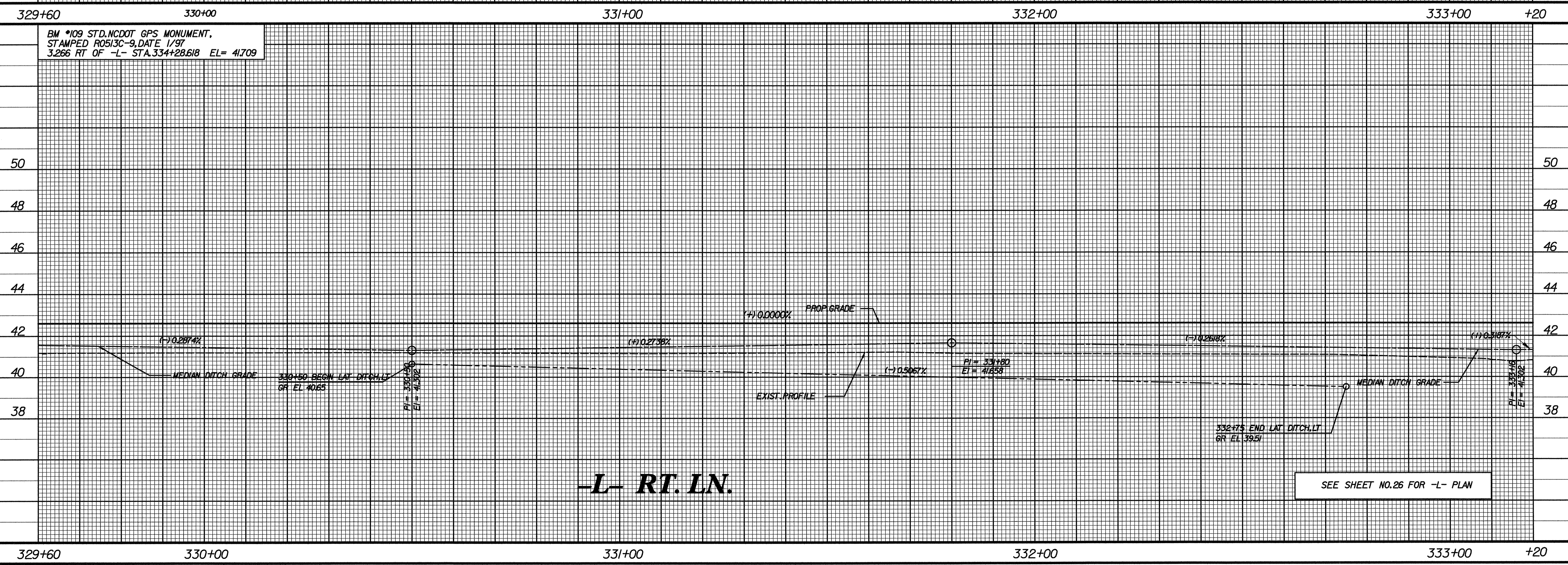
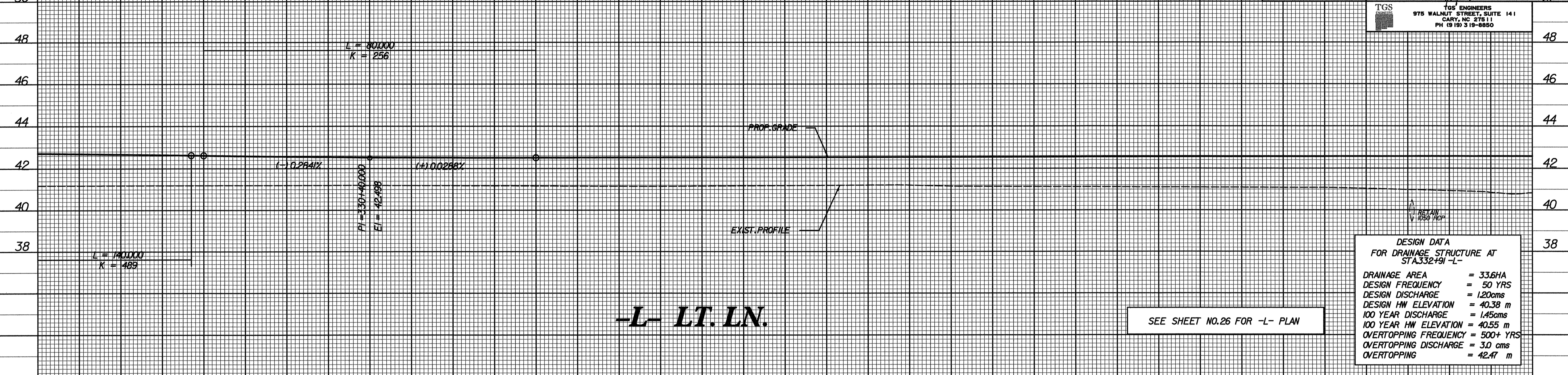
CONST. REV. R / W REV.

5 0 10

SEAL 12300  
 NORTH CAROLINA PROFESSIONAL ENGINEER  
 CHARLES LEE FLOWE

SEAL 20754  
 NORTH CAROLINA PROFESSIONAL ENGINEER  
 T. STEPHENS

TGS ENGINEERS  
 975 WALNUT STREET, SUITE 141  
 CARY, NC 27511  
 PH (919) 319-8850



\$\$\$ SYSTEM \$\$\$  
 \$\$\$ DOWN \$\$\$  
 \$\$\$ USER NAME \$\$\$