

BM \*109 STD.NCDOT GPS MONUMENT,  
 STAMPED R0513C-9, DATE 1/97  
 3.266 RT OF -L- STA.334+28.618 EL= 41.709



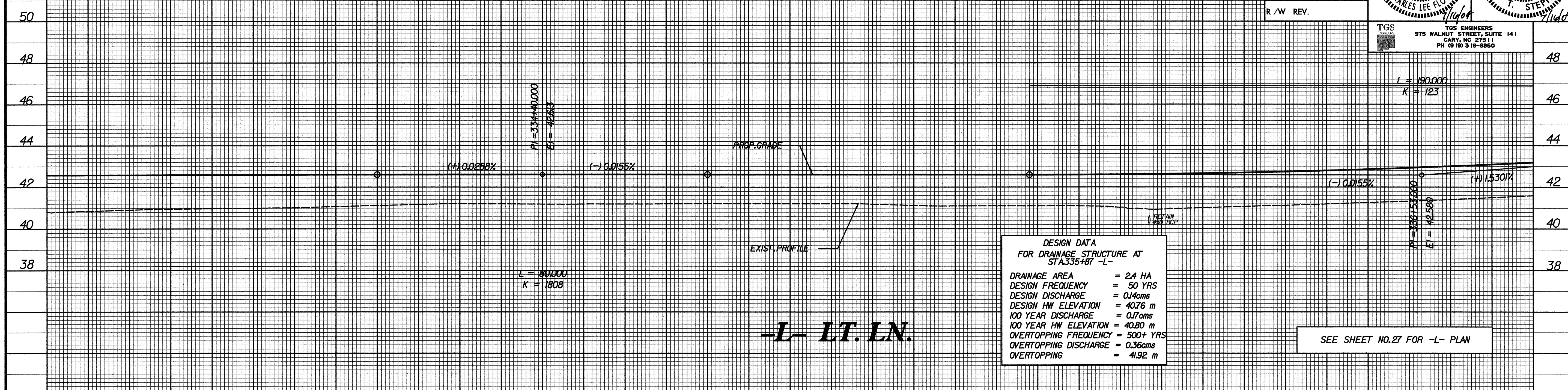
PROJECT REFERENCE NO. R-513C SHEET NO. 68

ROADWAY DESIGN ENGINEER  
 HYDRAULICS ENGINEER



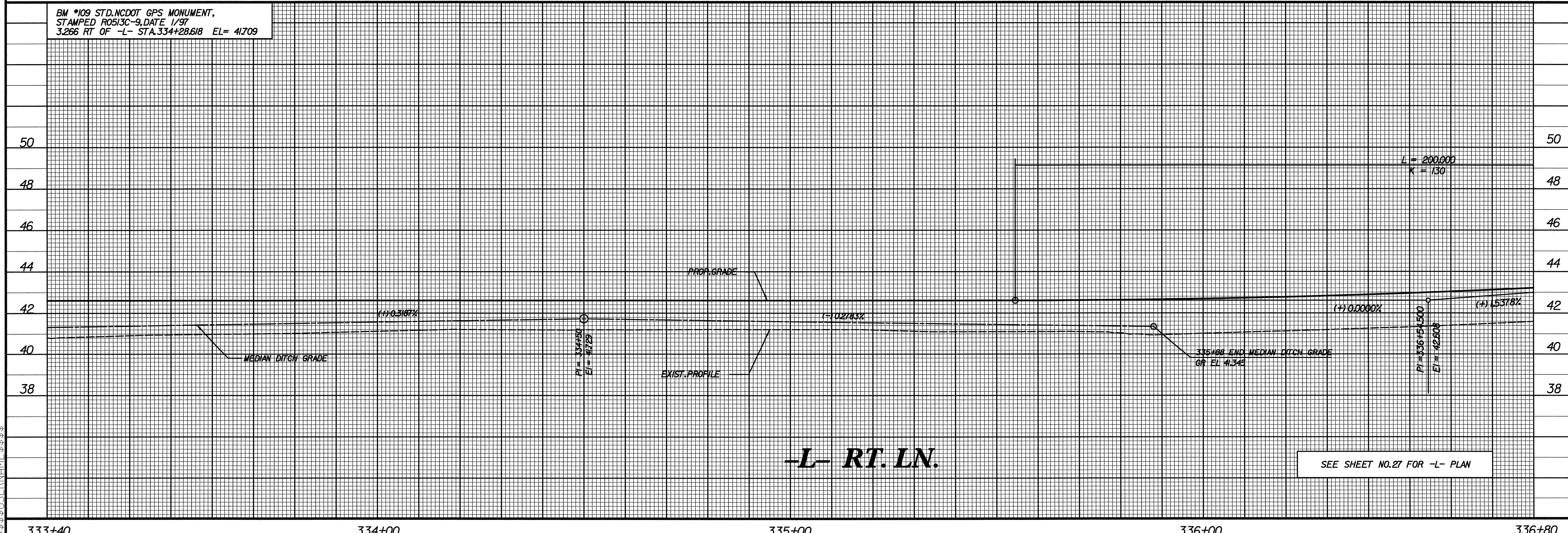
CONST. REV.  
 R / W REV.

TGS ENGINEERS  
 975 WALNUT STREET, SUITE 141  
 CARY, NC 27511  
 PH (919) 319-8850



333+20 334+00 335+00 336+00 336+80

BM \*109 STD.NCDOT GPS MONUMENT,  
 STAMPED R0513C-9, DATE 1/97  
 3.266 RT OF -L- STA.334+28.618 EL= 41.709



333+40 334+00 335+00 336+00 336+80

SYSTEM\$\$\$\$\$  
 DGN\$\$\$\$\$  
 USERNAME\$\$\$\$\$